



Chipsmall Limited consists of a professional team with an average of over 10 year of expertise in the distribution of electronic components. Based in Hongkong, we have already established firm and mutual-benefit business relationships with customers from,Europe,America and south Asia,supplying obsolete and hard-to-find components to meet their specific needs.

With the principle of “Quality Parts,Customers Priority,Honest Operation,and Considerate Service”,our business mainly focus on the distribution of electronic components. Line cards we deal with include Microchip,ALPS,ROHM,Xilinx,Pulse,ON,Everlight and Freescale. Main products comprise IC,Modules,Potentiometer,IC Socket,Relay,Connector.Our parts cover such applications as commercial,industrial, and automotives areas.

We are looking forward to setting up business relationship with you and hope to provide you with the best service and solution. Let us make a better world for our industry!



## Contact us

Tel: +86-755-8981 8866 Fax: +86-755-8427 6832

Email & Skype: [info@chipsmall.com](mailto:info@chipsmall.com) Web: [www.chipsmall.com](http://www.chipsmall.com)

Address: A1208, Overseas Decoration Building, #122 Zhenhua RD., Futian, Shenzhen, China



# Customer Information Sheet

DRAWING No.: KF-470XXXX

SHEET 2 OF 2

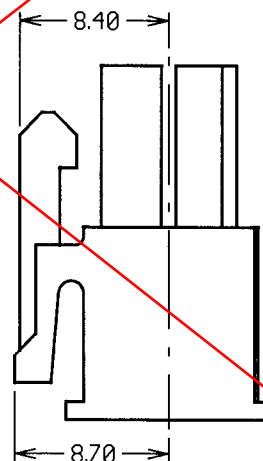
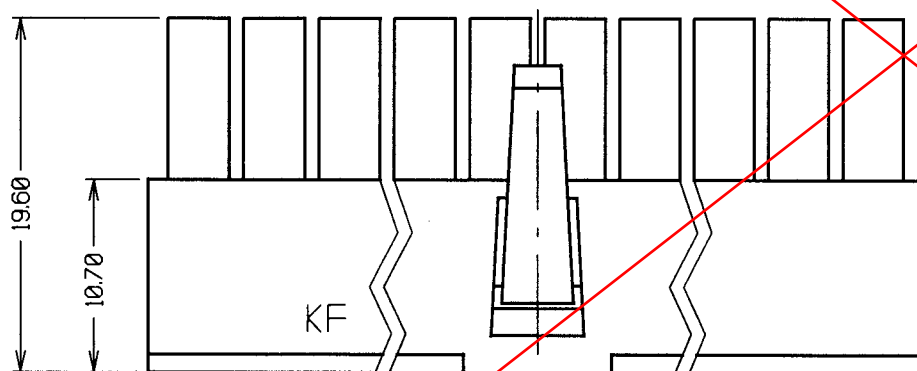
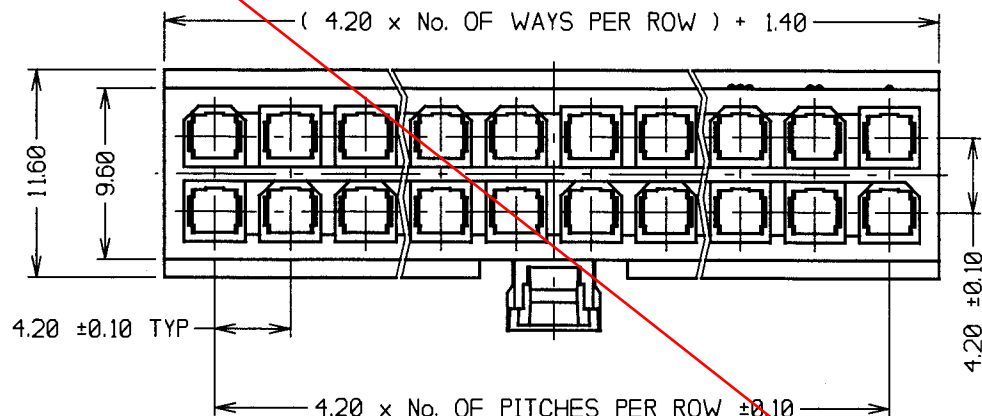
IF IN DOUBT - ASK

(C)

NOT TO SCALE

THIRD ANGLE PROJECTION

ALL DIMENSIONS IN mm



## SPECIFICATIONS:

### MATERIALS:

#### MOULDINGS:

KF-470XX98 - NYLON 66 UL94V-2 BLACK

KF-470XX00 - NYLON 66 UL94V-2 NATURAL

#### FINISH: CLEAN

| No. OF CONTACTS | 2-3    | 4-6    | 7-10   | 11-24  |
|-----------------|--------|--------|--------|--------|
| CURRENT RATING  | 9 AMPS | 8 AMPS | 7 AMPS | 6 AMPS |

VOLTAGE RATING - 600V

DIELECTRIC WITHSTANDING - 1500V AC

CONTACT RESISTANCE - 10 MILLIOHMS MAX

INSULATION RESISTANCE - 1000 MEGOHMS MIN

### MECHANICAL:

CONTACT INSERTION FORCE - 14.7N MAX

CONTACT RETENTION FORCE - 29.4N MIN

DURABILITY - 30 OPERATIONS

### ENVIRONMENTAL:

TEMPERATURE RANGE -  $-40^{\circ}\text{C}$  TO  $+105^{\circ}\text{C}$

FOR COMPONENT SPECIFICATION, SEE COMPONENT SPECIFICATION C033XX (LATEST ISSUE).

## ORDER CODE:

KF-470XXXX

No. OF WAYS PER ROW  
01 TO 12

## COLOUR:

98 = BLACK

00 = NATURAL

## NOTES:

1. ALL TOLERANCES TO BE  $\pm 0.35$  UNLESS OTHERWISE STATED.
2. FOR USE WITH REELED FEMALE CRIMPS KF-460/461/4620006 AND LOOSE FEMALE CRIMPS KF-465/466/4670006. SPECIFICATIONS STATED ABOVE APPLY WHEN HOUSING IS USED WITH THESE CONTACTS.

**OBSOLETE**

KF-47001XX AND  
KF-47002XX:  
NO LATCHING  
FEATURE

|               |          |        |
|---------------|----------|--------|
| 5             | 29.10.00 | 5544   |
| ISS.          | DATE     | C/NOTE |
| APPROVED:     |          |        |
| CHECKED:      |          |        |
| DRAWN:        | J. KEIR  |        |
| CUSTOMER REF: |          |        |
| ASSEMBLY DRG: |          |        |

# HARWIN

HARWIN INC  
U.S.A.  
TEL: (812) 285 0055  
FAX: (812) 285 0056

HARWIN PLC  
UK.  
TEL: 023 9231 4545  
FAX: 023 9231 4590

HARWIN PTE  
SINGAPORE  
TEL: 65 7794909  
FAX: 65 7793868

THIS DRAWING AND ANY  
INFORMATION OR DESCRIPTIVE  
MATTER SET OUT HEREON ARE  
CONFIDENTIAL AND COPYRIGHT  
PROPERTY OF THE HARWIN  
GROUP AND MUST NOT BE  
DISCLOSED, LOANED, COPIED  
OR USED FOR MANUFACTURING,  
TENDERING OR FOR ANY  
OTHER PURPOSE WITHOUT  
THEIR WRITTEN PERMISSION

## TOLERANCES

X. -  $\pm 1\text{mm}$   
X.X -  $\pm 0.25\text{mm}$   
X.XX -  $\pm 0.10\text{mm}$   
X.XXX -  $\pm 0.01\text{mm}$   
ANGLES -  $\pm 1^{\circ}$   
UNLESS STATED

## MATERIAL:

SEE ABOVE

FINISH: CLEAN

S/AREA: mm<sup>2</sup>

## TITLE:

POWERFIT®  
4.2mm PITCH DIL FEMALE  
LATCHED CRIMP HOUSING

DRAWING NUMBER:

KF-470XXXX

SHT  
2  
OF  
2



# Customer Information Sheet

DRAWING No.: KF-470XX00

SHEET 2 OF 2

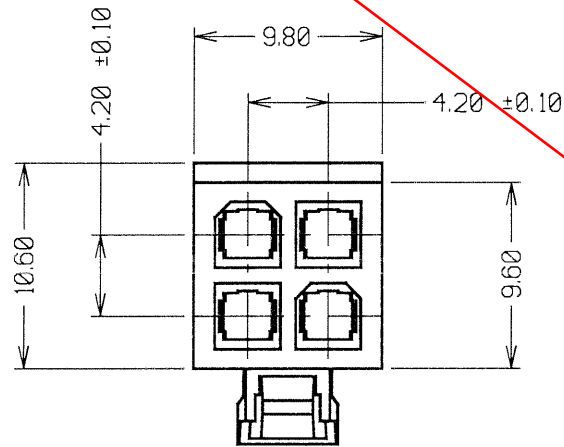
IF IN DOUBT - ASK

(C)

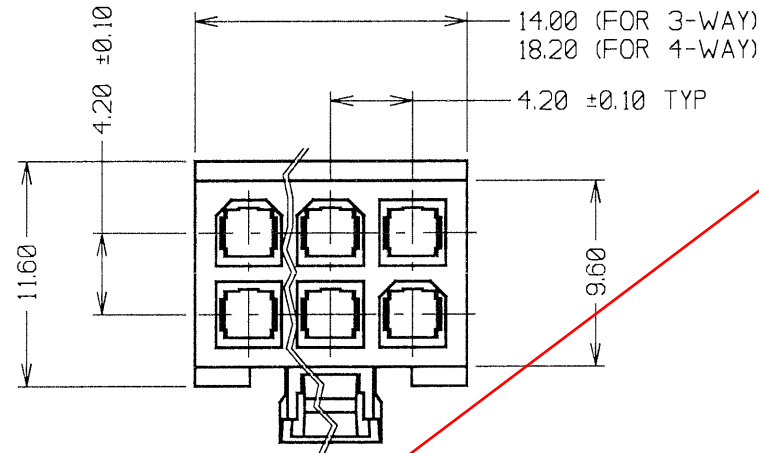
NOT TO SCALE

THIRD ANGLE PROJECTION

ALL DIMENSIONS IN mm

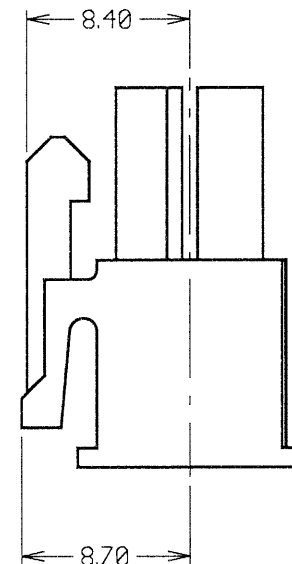
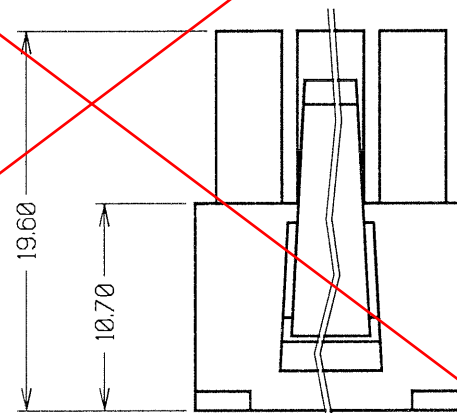
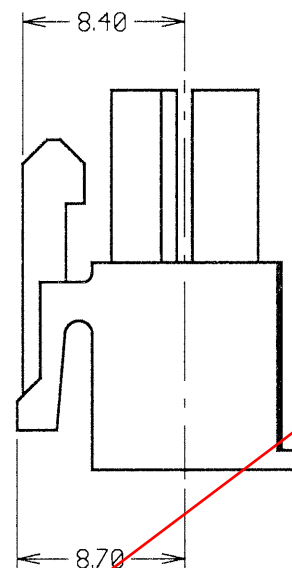
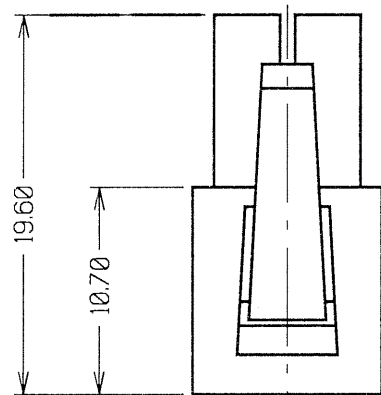


KF-4700200



KF-4700300 & KF-4700400

**OBSOLETE**



## SPECIFICATIONS:

### MATERIALS:

MOULDING = NYLON 66, UL94V-2, NATURAL

### ELECTRICAL:

CURRENT RATING = 8 AMPS

VOLTAGE RATING = 600V

DIELECTRIC WITHSTANDING = 1500V AC

CONTACT RESISTANCE = 10 MILLIOHMS MAX

INSULATION RESISTANCE = 1000 MEGOHMS MIN

### MECHANICAL:

CONTACT INSERTION FORCE = 14.7N MAX

CONTACT RETENTION FORCE = 29.4N MIN

DURABILITY = 30 OPERATIONS

### ENVIRONMENTAL:

TEMPERATURE RANGE = -40°C TO +105°C  
FOR COMPONENT SPECIFICATION SEE COMPONENT  
SPECIFICATION C033XX (LATEST ISSUE).

## NOTES:

1. ALL TOLERANCES TO BE  $\pm 0.35$  UNLESS OTHERWISE STATED.
2. FOR USE WITH REELED FEMALE CRIMPS KF-4600046 & LOOSE FEMALE CRIMPS KF-4660046. SPECIFICATIONS STATED TO THE LEFT APPLY WHEN HOUSING IS USED WITH THESE CONTACTS.

ORDER CODE:

KF-470XX00

No. OF WAYS PER ROW  
02, 03 & 04

COLOUR:  
00 = NATURAL

JMB 6 28.06.06 9302

NAME ISS. DATE C/NOTE

APPROVED: J.B.

CHECKED: M.P.

DRAWN: J. KEIR

CUSTOMER REF.:

ASSEMBLY DRG:

**HARWIN**

HARWIN USA  
TEL: 603 893 5376  
FAX: 603 893 5396  
mis@harwin.com

HARWIN Europe (UK)  
TEL: 023 9231 4545  
FAX: 023 9231 4590  
mis@harwin.co.uk

HARWIN Asia  
TEL: +65 6 779 4909  
FAX: +65 6 779 3868  
mis@harwin.com.sg

THIS DRAWING AND ANY  
INFORMATION OR DESCRIPTIVE  
MATTER SET OUT HEREON ARE  
CONFIDENTIAL AND COPYRIGHT  
PROPERTY OF THE HARWIN  
GROUP AND MUST NOT BE  
DISCLOSED, LOANED, COPIED  
OR USED FOR MANUFACTURING,  
TENDERING OR FOR ANY  
OTHER PURPOSE WITHOUT  
THEIR WRITTEN PERMISSION.

## TOLERANCES

X. =  $\pm 1$ mm  
X.X =  $\pm 0.25$ mm  
X.XX =  $\pm 0.10$ mm  
X.XXX =  $\pm 0.01$ mm  
ANGLES =  $\pm 5^\circ$   
UNLESS STATED

## MATERIAL:

NYLON 66, UL94V-2, NATURAL

FINISH: CLEAN

S/AREA: mm<sup>2</sup>

## TITLE:

POWERFIT®  
4.2mm PITCH DIL FEMALE  
LATCHED CRIMP HOUSING

DRAWING NUMBER:

KF-470XX00

SHT  
2  
OF  
2