



Chipsmall Limited consists of a professional team with an average of over 10 year of expertise in the distribution of electronic components. Based in Hongkong, we have already established firm and mutual-benefit business relationships with customers from,Europe,America and south Asia,supplying obsolete and hard-to-find components to meet their specific needs.

With the principle of “Quality Parts,Customers Priority,Honest Operation,and Considerate Service”,our business mainly focus on the distribution of electronic components. Line cards we deal with include Microchip,ALPS,ROHM,Xilinx,Pulse,ON,Everlight and Freescale. Main products comprise IC,Modules,Potentiometer,IC Socket,Relay,Connector.Our parts cover such applications as commercial,industrial, and automotives areas.

We are looking forward to setting up business relationship with you and hope to provide you with the best service and solution. Let us make a better world for our industry!



## Contact us

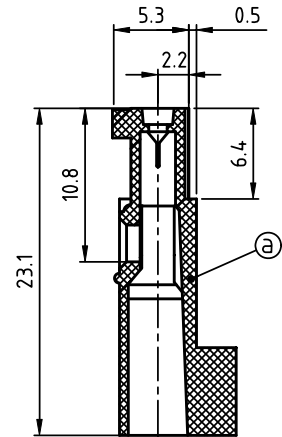
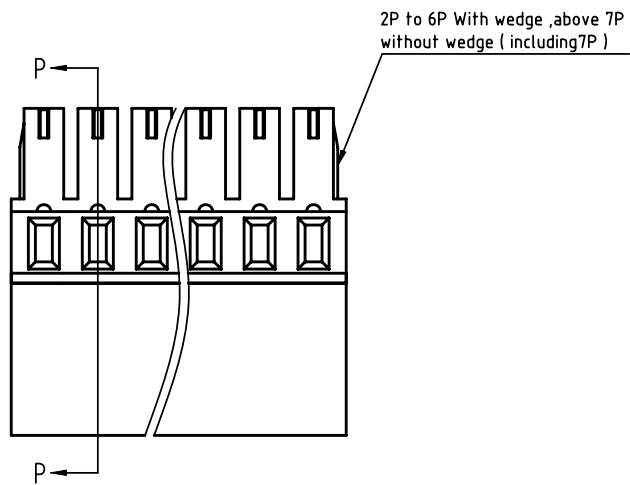
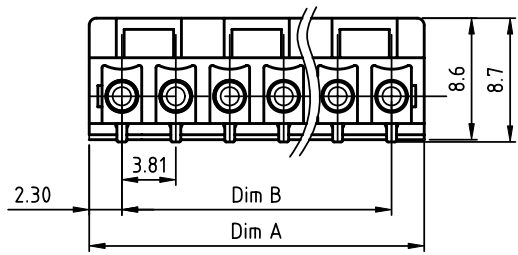
Tel: +86-755-8981 8866 Fax: +86-755-8427 6832

Email & Skype: info@chipsmall.com Web: www.chipsmall.com

Address: A1208, Overseas Decoration Building, #122 Zhenhua RD., Futian, Shenzhen, China



PRODUCT NUMBER	PITCH
Klxx30x100J0G	3.81 mm



Section P-P

- Material:  
 ●Item@ Terminal housing: Thermoplastic (UL94 V-0)
- Electrical  
 ●Voltage rating: 160V  
 ●Current rating: 8A  
 ●Wire range: 1.0~1.2mm<sup>2</sup>  
 ●Withstanding Voltage: 1.32KV  
 ●Corresponding female crimp contacts:A0 3.81 series

PART NO.: Kl xx 30 x 1 00J0 G

N=number of poles  
 Dim A=(N-1)x3.81+4.60  
 Dim B=(N-1)x3.81

Poles	2P~6P	7P~12P	13P~18P	19P~24P
Dim A	±0.20	±0.25	±0.30	±0.35
Dim B	±0.15	±0.20	±0.25	±0.30

- |              |          |                     |  |
|--------------|----------|---------------------|--|
| Solid block  | 0        | Black (RAL9005)     | RoHS compliant<br>(lead<4%)<br>In copper Alloy |
| No. of poles | 2        | Red (RAL3001/D)     |  |
| 02           | 2 poles  | 3 Orange(RAL2011/P) |  |
| 03           | 3 poles  | 4 Yellow(RAL1018/A) |  |
| ...          | ...      | 5 Green(RAL6018/T)  |  |
| 24           | 24 poles | 6 Blue (RAL5015/A)  |  |
|              |          | 8 Grey(RAL7035/D)   |  |
|              |          | 9 White(RAL1102)    |  |
|              |          | C Green(RAL6018/U)  |  |

mat'l. code		surface ASME Y14.5	tolerance ASME Y14.5	projection	product family TERMINAL BLOCK
ltr	ecn no	dr	date	 MM	title TERMINAL BLOCK PLUGGABLE PLUG, CRIMP CONNECTION, WITH HIGH PROFILE
angles		tolerances unless otherwise specified			
X*±1°		X.±0.5 X.X±0.3 X.XX±0.1		dr	dwg no
ENGR		EVIN ZHONG		050414	sheet 1 of 1
ENGR		EVIN ZHONG		050414	size
CHR		HANKE FENG		050414	A4
APPD		SHI JUN		050414	type
sheet index		revision		A	CUSTOMER Drawing
sheet		1			