



Chipsmall Limited consists of a professional team with an average of over 10 year of expertise in the distribution of electronic components. Based in Hongkong, we have already established firm and mutual-benefit business relationships with customers from,Europe,America and south Asia,supplying obsolete and hard-to-find components to meet their specific needs.

With the principle of “Quality Parts,Customers Priority,Honest Operation,and Considerate Service”,our business mainly focus on the distribution of electronic components. Line cards we deal with include Microchip,ALPS,ROHM,Xilinx,Pulse,ON,Everlight and Freescale. Main products comprise IC,Modules,Potentiometer,IC Socket,Relay,Connector.Our parts cover such applications as commercial,industrial, and automotives areas.

We are looking forward to setting up business relationship with you and hope to provide you with the best service and solution. Let us make a better world for our industry!



## Contact us

Tel: +86-755-8981 8866 Fax: +86-755-8427 6832

Email & Skype: info@chipsmall.com Web: www.chipsmall.com

Address: A1208, Overseas Decoration Building, #122 Zhenhua RD., Futian, Shenzhen, China





## Night Light Soldering Kit

KIT-14638

The night is dark and full of terrors, so why not light it up with this handy little night light that will fade up and down depending on how dark the environment is? The Night Light is an intermediate level soldering kit designed to provide good lessons for individuals looking to expand their soldering expertise by building a light-activated night light cube! Each Night Light Soldering Kit takes about 10-30min to assemble with basic soldering materials (not included), the hardest part being actually assembling the housing around the LED PCB.

Every Night Light kit includes housing and base PCBs, five white LEDs, resistors, a mini photocell, an NPN transistor, and an SMD USB power connector. All you need to supply (besides a soldering iron and solder) is a micro USB cable since it is **not** included. We do recommend taking your time assembling this kit as you will need patience to make sure the design-cut PCB housing is assembled correctly.

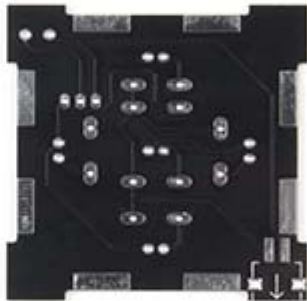
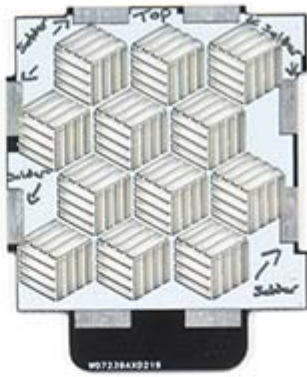
**Note:** Since this product is a kit, assembly and a basic knowledge of soldering will be required. The Night Light Kit does not come pre-assembled.



## INCLUDES

- 1x Top PCB
- 1x Base PCB
- 4x Side PCBs
- 5x White 5mm LEDs
- 1x Mini Photocell
- 1x SMD USB Power Connector
- 1x NPN - 2N3904 Transistor
- 5x 270 Ohm Resistors
- 1x 39K Ohm Resistor







<https://www.sparkfun.com/products/14638> 4-3-18