



Chipsmall Limited consists of a professional team with an average of over 10 year of expertise in the distribution of electronic components. Based in Hongkong, we have already established firm and mutual-benefit business relationships with customers from,Europe,America and south Asia,supplying obsolete and hard-to-find components to meet their specific needs.

With the principle of “Quality Parts,Customers Priority,Honest Operation,and Considerate Service”,our business mainly focus on the distribution of electronic components. Line cards we deal with include Microchip,ALPS,ROHM,Xilinx,Pulse,ON,Everlight and Freescale. Main products comprise IC,Modules,Potentiometer,IC Socket,Relay,Connector.Our parts cover such applications as commercial,industrial, and automotives areas.

We are looking forward to setting up business relationship with you and hope to provide you with the best service and solution. Let us make a better world for our industry!



Contact us

Tel: +86-755-8981 8866 Fax: +86-755-8427 6832

Email & Skype: info@chipsmall.com Web: www.chipsmall.com

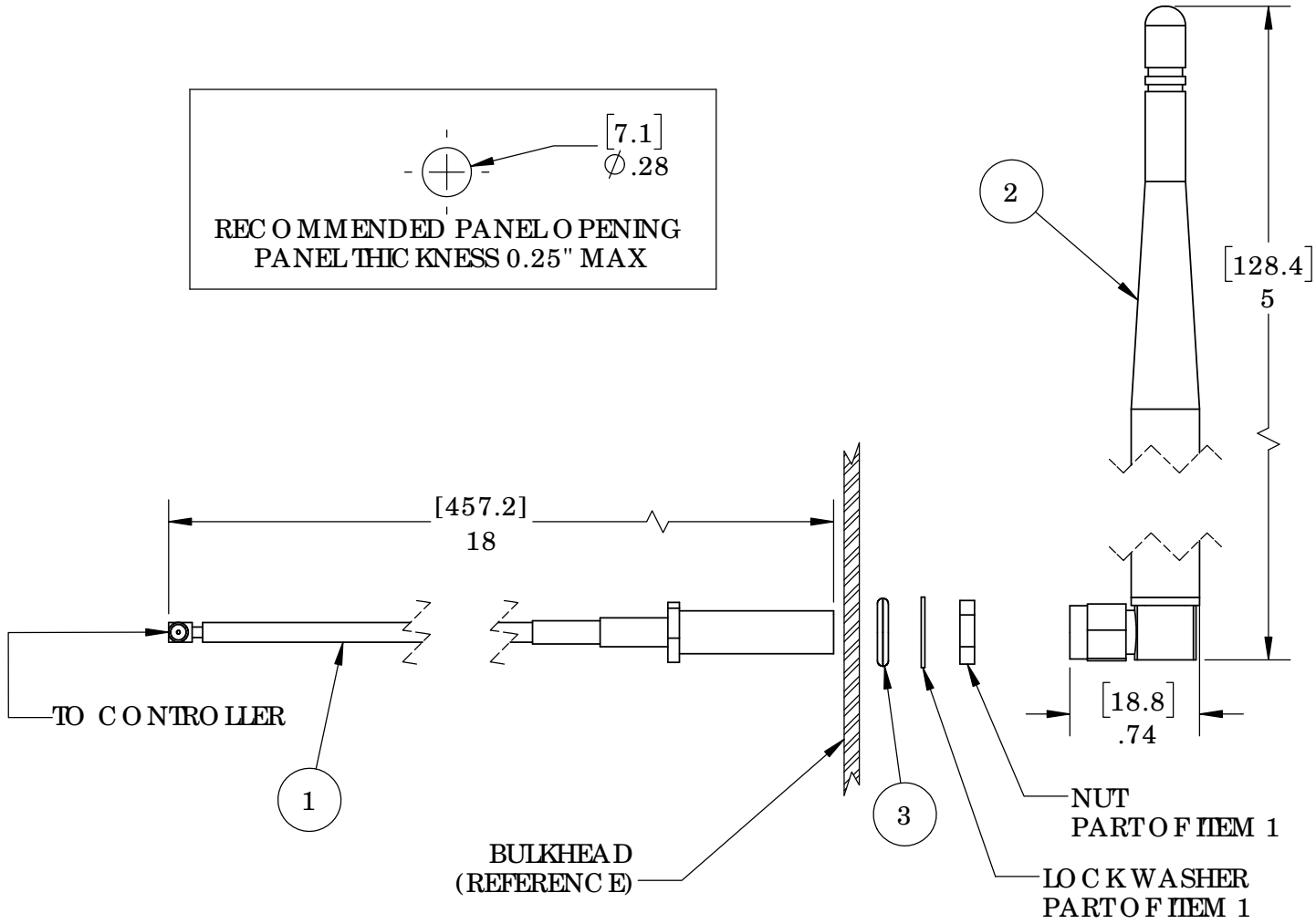
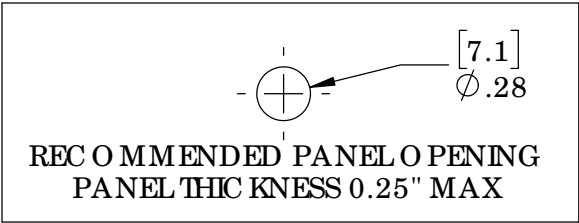
Address: A1208, Overseas Decoration Building, #122 Zhenhua RD., Futian, Shenzhen, China



REVISIONS

ZONE	REV.	CHANGE DESCRIPTION	APPROVED	DATE
ALL	A000	CREATE	EMJ	11/30/16

ITEM	PN	DESCRIPTION	QTY.
1	326043-01A	CABLE, U.FL TO RP-SMA FEMALE, 18-IN	1
2	320006-01	ANTENNA, 2.4GHZ, OUTDOOR, RIGHT ANGLE, RP-SMA MALE, 1.5dBi	1
3	CON369	CONN O-RING FOR SMA CONNECTORS	1



THIRD ANGLE PROJECTION

UNLESS OTHERWISE SPECIFIED:
 DIMENSIONS ARE IN INCHES [MM]
 TOLERANCES:
 ANGULAR: MACH ±1° BEND ±3°
 TWO PLACE DECIMAL ±.01
 THREE PLACE DECIMAL ±.005

PROPRIETARY AND CONFIDENTIAL
 THE INFORMATION CONTAINED
 IN THIS DRAWING IS THE SOLE
 PROPERTY OF SYNAPSE WIRELESS,
 INC.. ANY REPRODUCTION IN PART
 OR AS A WHOLE WITHOUT THE
 WRITTEN PERMISSION OF SYNAPSE
 WIRELESS, INC IS PROHIBITED.

COMMENTS:

INTERPRET GEOMETRIC
 TOLERANCING PER: ANSI

MATERIAL

FINISH

DO NOT SCALE DRAWING

synapse SYNAPSE WIRELESS INC.
 6723 O DYSSSEY DR HUNTSVILLE, AL35806

TITLE:
**OUTDOOR KIT, U.FL TO
 RIGHT ANGLE, GLP-KIT-
 ANTUFL18-01**

SIZE	DWG. NO.	REV
A	120-035041-000	A000

ENGR: EMJ SHEET 1 OF 1