



Chipsmall Limited consists of a professional team with an average of over 10 year of expertise in the distribution of electronic components. Based in Hongkong, we have already established firm and mutual-benefit business relationships with customers from,Europe,America and south Asia,supplying obsolete and hard-to-find components to meet their specific needs.

With the principle of “Quality Parts,Customers Priority,Honest Operation,and Considerate Service”,our business mainly focus on the distribution of electronic components. Line cards we deal with include Microchip,ALPS,ROHM,Xilinx,Pulse,ON,Everlight and Freescale. Main products comprise IC,Modules,Potentiometer,IC Socket,Relay,Connector.Our parts cover such applications as commercial,industrial, and automotives areas.

We are looking forward to setting up business relationship with you and hope to provide you with the best service and solution. Let us make a better world for our industry!



## Contact us

Tel: +86-755-8981 8866 Fax: +86-755-8427 6832

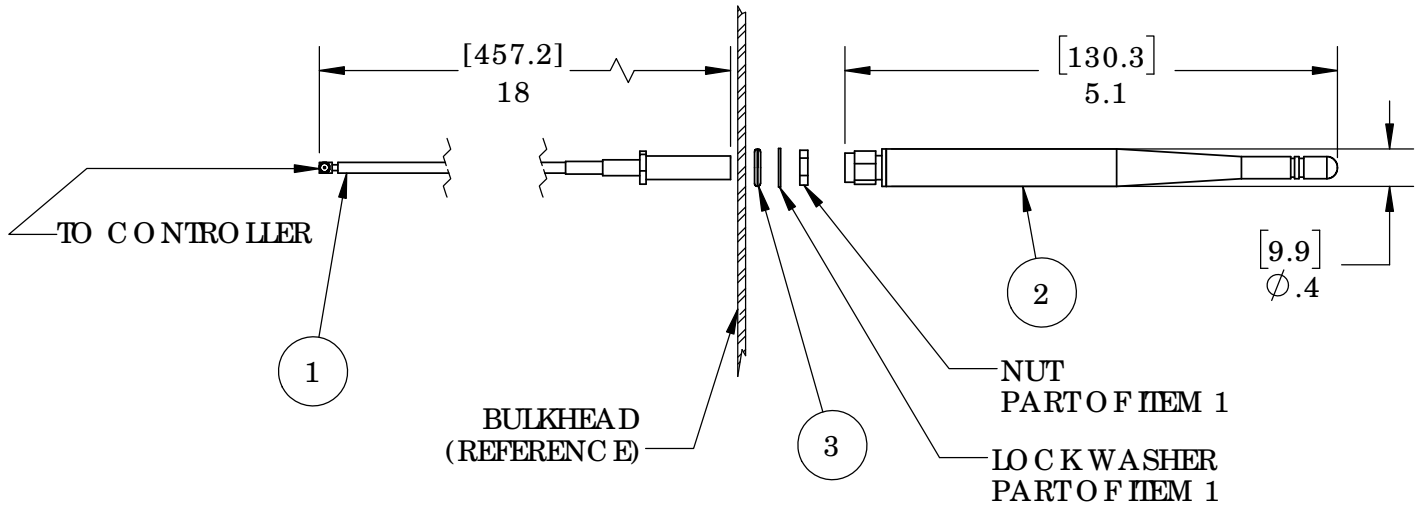
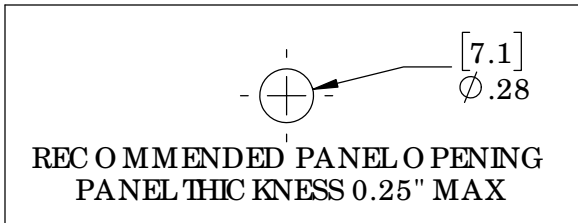
Email & Skype: info@chipsmall.com Web: www.chipsmall.com

Address: A1208, Overseas Decoration Building, #122 Zhenhua RD., Futian, Shenzhen, China



REVISIONS				
ZONE	REV.	CHANGE DESCRIPTION	APPROVED	DATE
ALL	A000	CREATE	EMJ	11/30/16

ITEM	PN	DESCRIPTION	QTY.
1	326043-01A	CABLE, U.FL TO RP-SMA FEMALE, 18 INCH	1
2	ANT019	ANTENNA, 2.4GHZ, OUTDOOR, STRAIGHT, RP-SMA MALE, 1.5dBi	1
3	CON369	CONN O-RING FOR SMA CONNECTORS	1



<p>THIRD ANGLE PROJECTION</p> <p>UNLESS OTHERWISE SPECIFIED: DIMENSIONS ARE IN INCHES [MM] TOLERANCES: ANGULAR: MACH ±1° BEND ±3° TWO PLACE DECIMAL ±.01 THREE PLACE DECIMAL ±.005</p> <p>PROPRIETARY AND CONFIDENTIAL THE INFORMATION CONTAINED IN THIS DRAWING IS THE SOLE PROPERTY OF SYNAPSE WIRELESS, INC. ANY REPRODUCTION IN PART OR AS A WHOLE WITHOUT THE WRITTEN PERMISSION OF SYNAPSE WIRELESS, INC IS PROHIBITED.</p>	<p>COMMENTS:</p> <p>INTERPRET GEOMETRIC TOLERANCING PER: ANSI</p> <p>MATERIAL</p> <p>FINISH</p> <p>DO NOT SCALE DRAWING</p>	<p><b>synapse</b> SYNAPSE WIRELESS INC. 6723 ODYSSEY DR HUNTSVILLE, AL35806</p>		
		<p>TITLE: <b>OUTDOOR KIT, U.FL TO STRAIGHT, GLP-KIT- ANTUFL18-02</b></p>		
<p>SIZE <b>A</b></p>		<p>DWG. NO. <b>120-035051-000</b></p>	<p>REV <b>A000</b></p>	
<p>ENGR: EMJ</p>			<p>SHEET 1 OF 1</p>	