



Chipsmall Limited consists of a professional team with an average of over 10 year of expertise in the distribution of electronic components. Based in Hongkong, we have already established firm and mutual-benefit business relationships with customers from,Europe,America and south Asia,supplying obsolete and hard-to-find components to meet their specific needs.

With the principle of “Quality Parts,Customers Priority,Honest Operation,and Considerate Service”,our business mainly focus on the distribution of electronic components. Line cards we deal with include Microchip,ALPS,ROHM,Xilinx,Pulse,ON,Everlight and Freescale. Main products comprise IC,Modules,Potentiometer,IC Socket,Relay,Connector.Our parts cover such applications as commercial,industrial, and automotives areas.

We are looking forward to setting up business relationship with you and hope to provide you with the best service and solution. Let us make a better world for our industry!



Contact us

Tel: +86-755-8981 8866 Fax: +86-755-8427 6832

Email & Skype: info@chipsmall.com Web: www.chipsmall.com

Address: A1208, Overseas Decoration Building, #122 Zhenhua RD., Futian, Shenzhen, China



September 2016



MULTILAYER CERAMIC CAPACITORS



SAMSUNG
ELECTRO-MECHANICS



We declare that all our MLCCs are produced
in accordance with EU RoHS and REACH Directive.



RoHS Compliance and restriction of Br

The following restricted materials are not used in packaging materials as well as products in compliance with the law and restriction.

– Cd, Pb, Hg, Cr6+, As, Br and the compounds, PCB, asbestos

No use of materials breaking Ozone layer

The following ODS materials are not used in our fabrication process.

– ODS material : Freon, Haron, 1 – 1 – 1 TCE, CCl₄, HCFC

If you want more detailed Information, Please Visit Samsung Electro –mechanics Website
<http://www.semlcr.com>

Contents

In order to move to the contents directly,
please click each content icon

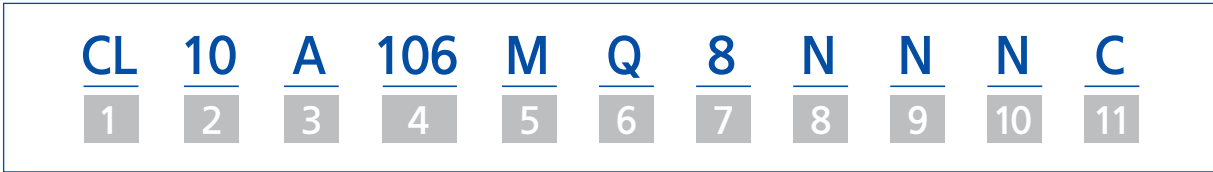


| | |
|---|------------|
| <u>Part Numbering System</u> | <u>04</u> |
| <u>Standard & High Capacitors</u> | <u>06</u> |
| <u>Low Profile Capacitors</u> | <u>34</u> |
| <u>Super Small Size Capacitors</u> | <u>39</u> |
| <u>High - Q Capacitors</u> | <u>47</u> |
| <u>Medium - High Voltage Capacitors</u> | <u>52</u> |
| <u>Soft - term Capacitors</u> | <u>62</u> |
| <u>Low Acoustic Noise Capacitors</u> | <u>65</u> |
| <u>High Effective Capacitance Capacitors</u> | <u>68</u> |
| <u>Low ESL Capacitors</u> | <u>71</u> |
| <u>Array Type Capacitors</u> | <u>76</u> |
| <u>Industrial Capacitors</u> | <u>79</u> |
| <u>Reliability Test Condition</u> | <u>128</u> |
| <u>Premium Capacitors for Automotive Applications</u> | <u>132</u> |
| <u>Packaging Specification</u> | <u>146</u> |
| <u>Application Manual for Surface Mounting</u> | <u>150</u> |
| <u>Certifications</u> | <u>154</u> |

※ Remarks : Symbols in this catalog have the following definition.

- Derating** This capacitor with derating is designed for 70% of the rated voltage or less.
- dv/dt** dv/dt means Pulse(dv/dt) Guarantee Capacitor, 10,000V/us(=10V/ns) max.10,000 cycles guarantee(@Vr, Room temp)
- Ref.** Reference means that CAP & TCC have the exceptional measurement conditions for Capacitance and Temperature Characteristics of Capacitance.
So please refer to the individual specification for CAP and the individual characteristics data for TCC on Website.

Part Numbering System



1 SERIES CODE

CL = Multilayer Ceramic Capacitors

2 SIZE CODE

| Code | inch(mm) | Code | inch(mm) | Code | inch(mm) | Code | inch(mm) |
|------|-------------|------|------------|------|------------|------|------------|
| 02 | 01005(0402) | 10 | 0603(1608) | 32 | 1210(3225) | 55 | 2220(5750) |
| 03 | 0201(0603) | 21 | 0805(2012) | 42 | 1808(4520) | | |
| 05 | 0402(1005) | 31 | 1206(3216) | 43 | 1812(4532) | | |

3 DIELECTRIC CODE

Class I (Temperature Compensation)

| Symbol | EIA Code | Operation Temperature Range(°C) | Temperature Coefficient(ppm / °C) |
|--------|----------|---------------------------------|-----------------------------------|
| C | COG | -55 ~ +125 | 0±30 |

Class II (High Dielectric Constant)

| Symbol | EIA Code | Operation Temperature Range(°C) | Capacitance Change(%) |
|--------|----------|---------------------------------|-----------------------|
| A | X5R | -55 ~ +85 | ±15 |
| B | X7R | -55 ~ +125 | ±15 |
| X | X6S | -55 ~ +105 | ±22 |
| F | Y5V | -30 ~ +85 | -82 ~ +22 |
| Y | X7S | -55 ~ +125 | ±22 |
| Z | X7T | -55 ~ +125 | -33 ~ +22 |

4 CAPACITANCE CODE

Capacitance expressed in pF. 2 significant digits plus number of zeros.
example) 106=10×10⁶=10,000,000pF

For Values <10pF, Letter R denotes decimal point
example) 1R5 =1.5pF

5 CAPACITANCE TOLERANCE CODE

| Code | Tolerance | Code | Tolerance | Code | Tolerance | Code | Tolerance |
|------|-----------|------|-----------|------|-----------|------|-----------|
| N | ±0.03pF | H | +0.25pF | F* | ±1% | V | -5% |
| A | ±0.05pF | L | -0.25pF | G | ±2% | K | ±10% |
| B | ±0.1pF | D | ±0.5pF | J | ±5% | M | ±20% |
| C | ±0.25pF | F | ±1pF | U | +5% | Z | -20, +80% |

* For Values < 10pF, F = ±1pF / Values ≥ 10pF, F = ±1%

| Series | Capacitance Step | | | | | | | | | | | |
|--------|------------------|-----|-----|-----|-----|-----|-----|-----|-----|-----|-----|-----|
| E-3 | 1.0 | | | | 2.2 | | | | 4.7 | | | |
| E-6 | 1.0 | | 1.5 | | 2.2 | | 3.3 | | 4.7 | | 6.8 | |
| E-12 | 1.0 | 1.2 | 1.5 | 1.8 | 2.2 | 2.7 | 3.3 | 3.9 | 4.7 | 5.6 | 6.8 | 8.2 |
| E-24 | 1.0 | 1.2 | 1.5 | 1.8 | 2.2 | 2.7 | 3.3 | 3.9 | 4.7 | 5.6 | 6.8 | 8.2 |
| | 1.1 | 1.3 | 1.6 | 2.0 | 2.4 | 3.0 | 3.6 | 4.3 | 5.1 | 6.2 | 7.5 | 9.1 |

6 RATED VOLTAGE CODE

| Code | Voltage | Code | Voltage | Code | Voltage | Code | Voltage |
|------|---------|------|---------|------|---------|------|---------|
| S | 2.5Vdc | O | 16Vdc | C | 100Vdc | H | 630Vdc |
| R | 4.0Vdc | A | 25Vdc | D | 200Vdc | I | 1kVdc |
| Q | 6.3Vdc | L | 35Vdc | E | 250Vdc | J | 2kVdc |
| P | 10Vdc | B | 50Vdc | G | 500Vdc | K | 3kVdc |

7 THICKNESS CODE

(Unit:mm)

| Size inch(mm) | Code | Thickness | Tolerance | Size inch(mm) | Code | Thickness | Tolerance |
|---------------|------------|-----------|--------------|---------------|------------|-----------|-----------|
| 01005(0402) | 2 | 0.20 | ±0.02 | 1210(3225) | C | 0.85 | ±0.10* |
| 0201(0603) | 3 | 0.30 | ±0.03 | | 9 | 0.90 | ±0.10* |
| 0402(1005) | 3 | 0.30 | ±0.03* | | F | 1.25 | ±0.20 |
| | 5 | 0.50 | ±0.05 | | S | 1.35 | ±0.15* |
| 0603(1608) | 5 | 0.50 | +0.0 / -0.1* | | H | 1.60 | ±0.20 |
| | 8 | 0.80 | ±0.10 | | U | 1.80 | ±0.20* |
| 0805(2012) | A | 0.65 | ±0.10 | | I | 2.00 | ±0.20 |
| | C | 0.85 | ±0.10* | | J | 2.50 | ±0.20 |
| | C | 0.85 | ±0.10 | | V | 2.50 | ±0.30 |
| | M | 1.15 | ±0.10 | | 1808(4520) | F | 1.25 |
| | F | 1.25 | ±0.10 | G | | 1.40 | ±0.20 |
| | Q | 1.25 | ±0.15 | I | | 2.00 | ±0.20 |
| | 1206(3216) | Y | 1.25 | ±0.20 | 1812(4532) | F | 1.25 |
| C | | 0.85 | ±0.15 | H | | 1.60 | ±0.20 |
| C | | 0.85 | ±0.10* | I | | 2.00 | ±0.20 |
| E | | 1.10 | ±0.15 | J | | 2.50 | ±0.20 |
| E | | 1.10 | ±0.10* | L | 3.20 | ±0.30 | |
| P | | 1.15 | ±0.10* | 2220(5750) | H | 1.60 | ±0.20 |
| M | | 1.15 | ±0.15 | | I | 2.00 | ±0.20 |
| F | | 1.25 | ±0.15 | | J | 2.50 | ±0.20 |
| H | | 1.60 | ±0.20 | | L | 3.20 | ±0.30 |

* Mark is only applicable to "L", "Y", "F", 12th code in part number.

8 INNER ELECTRODE / TERMINATION / PLATING CODE

| Code | Thickness division | Inner electrode | Termination | Plating material |
|------|--------------------|-----------------|------------------|------------------|
| N | Normal | Ni | Cu | Ni / Sn _100% |
| G | Normal | Cu | Cu | Ni / Sn _100% |
| S | Normal | Ni | Soft Termination | Ni / Sn _100% |
| C | Normal | Ni | Control Code | Ni / Sn _100% |
| L | Low profile | Ni | Cu | Ni / Sn _100% |
| Y | Low profile | Ni | Soft Termination | Ni / Sn _100% |
| Z | Normal | Ni | Soft Termination | Ni / Sn _100% |
| F | Low profile | Ni | Soft Termination | Ni / Sn _100% |

9 PRODUCT CODE OR SIZE CONTROL CODE

(Unit:mm)

N = Normal
A = Array(2 - element)
B = Array(4 - element)
L = LICC
J = SLIC

| Code | 01005(0402) | 0201(0603) | 0402(1005) | 0603(1608) | 0805(2012) | 1206(3216) |
|------|-------------|------------|------------|------------|------------|------------|
| S | ±0.03 | ±0.05 | ±0.07 | ±0.07 | | ±0.30 |
| Q | ±0.05 | ±0.07 | ±0.10 | ±0.15 | ±0.15 | |
| R | ±0.07 | ±0.09 | ±0.15 | ±0.20 | ±0.20 | |
| U | ±0.09 | | ±0.20 | ±0.25 | ±0.25 | |
| Z | | | ±0.40 | ±0.30 | ±0.30 | |
| 9 | | | ±0.30 | | | |

10 CONTROL CODE

N = Reserved for future use

11 PACKAGING CODE

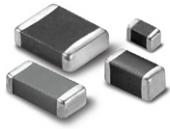
| Cardboard Tape (Paper) | | Embossed Tape (Plastic) | |
|------------------------|--------------------------------------|-------------------------|--------------------------------------|
| Code | Taping Type | Code | Taping Type |
| 8 / C / H | Normal, 7" reel (Quantity option) | E / G | Normal, 7" reel (Quantity option) |
| J | 1mm Pitch, 7" reel | R | Chip aligned for horizontal, 7" reel |
| Z | Chip aligned for horizontal, 7" reel | W | Chip aligned for vertical, 7" reel |
| Y | Chip aligned for vertical, 7" reel | S | Normal, 10" reel |
| O | Normal, 10" reel | F | Normal, 13" reel (Quantity option) |
| 3 / D / L | Normal, 13" reel (Quantity option) | | |
| 2 | 1mm Pitch, 13" reel | | |
| 7 | Chip aligned for vertical, 13" reel | | |

※ If you want to learn the code or quantity in detail, please see p.148

In order to move to the page directly, please click the here†

Standard & High Capacitors

Feature

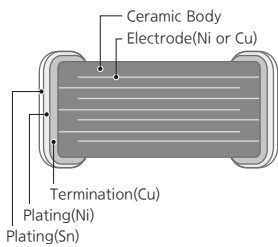
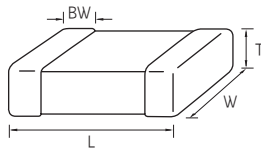


- Wide selection of size : from 0402(Inch) to 2220(Inch)
- Highly reliable tolerance and high speed automatic chip placement on PCBs
- Wide capacitance range
- Highly reliable performance
- Highly resistant termination metal
- Tape & reel for surface mount assembly

Application

- Mobile Phone
- DC-DC Converter
- Tablet devices
- PC (Laptop, Desktop)
- HDD /SSD board
- Display

Structure and Dimensions



| Size Code | EIA Code | Dimension(mm) | | | | |
|-----------|-----------|---------------|-----------|------------------|----------------|-----------------|
| | | L | W | T | Thickness Code | BW |
| 05 | 0402 | 1.00±0.05 | 0.50±0.05 | 0.0975±0.0125(*) | L | 0.25±0.075 |
| | | 1.00±0.10 | 0.50±0.05 | 0.19±0.03(*) | X | |
| | | 1.00±0.05 | 0.50±0.05 | 0.30±0.03(*) | 3 | |
| | | 1.00±0.05 | 0.50±0.05 | 0.50±0.05 | 5 | |
| 10 | 0603 | 1.60±0.10 | 0.80±0.10 | 0.50±0.0/-0.1(*) | 5 | 0.30±0.20 |
| | | 1.60±0.10 | 0.80±0.10 | 0.80±0.10 | 8 | |
| 21 | 0805 | 2.00±0.10 | 1.25±0.10 | 0.70±0.10(*) | 7 | 0.50±0.20/-0.30 |
| | | 2.00±0.10 | 1.25±0.10 | 0.80±0.10(*) | 8 | |
| | | 2.00±0.10 | 1.25±0.10 | 0.85±0.10 | C | |
| | | 2.00±0.10 | 1.25±0.10 | 0.90±0.10(*) | 9 | |
| | | 2.00±0.10 | 1.25±0.10 | 1.15±0.10 | M | |
| | | 2.00±0.10 | 1.25±0.10 | 1.25±0.10 | F | |
| | | 2.00±0.20 | 1.25±0.20 | 1.25±0.20 | Y | |
| 31 | 1206 | 3.20±0.20 | 1.60±0.20 | 0.60±0.10(*) | 6 | 0.50±0.30 |
| | | 3.20±0.15 | 1.60±0.15 | 0.85±0.15 | C | |
| | | 3.20±0.20 | 1.60±0.20 | 0.85±0.10(*) | C | |
| | | 3.20±0.20 | 1.60±0.20 | 0.90±0.10(*) | 9 | |
| | | 3.20±0.20 | 1.60±0.20 | 1.10±0.10(*) | E | |
| | | 3.20±0.20 | 1.60±0.20 | 1.15±0.10(*) | M | |
| | | 3.20±0.20 | 1.60±0.20 | 1.15±0.10(*) | P | |
| | | 3.20±0.15 | 1.60±0.15 | 1.25±0.15 | F | |
| 3.20±0.20 | 1.60±0.20 | 1.60±0.20 | H | | | |
| 32 | 1210 | 3.20±0.30 | 2.50±0.20 | 0.85±0.10(*) | C | 0.60±0.30 |
| | | 3.20±0.30 | 2.50±0.20 | 0.90±0.10(*) | 9 | |
| | | 3.20±0.30 | 2.50±0.20 | 1.60±0.20 | H | |
| | | 3.20±0.30 | 2.50±0.20 | 1.80±0.20(*) | U | |
| | | 3.20±0.30 | 2.50±0.20 | 2.00±0.20 | I | |
| | | 3.20±0.30 | 2.50±0.20 | 2.50±0.20 | J | |
| 42 | 1808 | 4.50±0.40 | 2.00±0.20 | 1.25±0.20 | F | 0.80±0.30 |
| | | 4.50±0.40 | 2.00±0.20 | 1.40±0.20 | G | |
| | | 4.50±0.40 | 2.00±0.20 | 2.00±0.20 | I | |
| 43 | 1812 | 4.50±0.40 | 3.20±0.30 | 1.25±0.20 | F | 0.80±0.30 |
| | | 4.50±0.40 | 3.20±0.30 | 2.50±0.20 | J | |
| | | 4.50±0.40 | 3.20±0.30 | 3.20±0.30 | L | |
| 55 | 2220 | 5.70±0.40 | 5.00±0.40 | 2.50±0.20 | J | 1.00±0.30 |
| | | 5.70±0.40 | 5.00±0.40 | 3.20±0.30 | L | |

* Mark is only applicable to "L", "F", 12th code in part number.

Standard & High Capacitors

Standard & High Capacitance Table (X5R)

| Size inch (mm) | Rated Voltage (Vdc) | Capacitance | | | | | | | | | | | | |
|----------------------|---------------------------|-------------|-----|-----|-----|-----|-----|----|----|----|-----|-----|-----|--|
| | | nF | | | uF | | | | | | | | | |
| | | 100 | 220 | 470 | 1.0 | 2.2 | 4.7 | 10 | 22 | 47 | 100 | 220 | | |
| 0402 (1005) | 4.0 | | | | | | | | | | | | | |
| | 6.3 | | | | | | | | | | | | | |
| | 10 | | | | | | | | | | | | | |
| | 16 | | | | | | | | | | | | | |
| | 25 | | | | | | | | | | | | | |
| | 35 | | | | | | | | | | | | | |
| 0603 (1608) | 4.0 | | | | | | | | | | | | | |
| | 6.3 | | | | | | | | | | | | | |
| | 10 | | | | | | | | | | | | | |
| | 16 | | | | | | | | | | | | | |
| | 25 | | | | | | | | | | | | | |
| | 35 | | | | | | | | | | | | | |
| | 50 | | | | | | | | | | | | | |
| 0805 (2012) | 4.0 | | | | | | | | | | | | | |
| | 6.3 | | | | | | | | | | | | | |
| | 10 | | | | | | | | | | | | | |
| | 16 | | | | | | | | | | | | | |
| | 25 | | | | | | | | | | | | | |
| | 35 | | | | | | | | | | | | | |
| | 50 | | | | | | | | | | | | | |
| 1206 (3216) | 6.3 | | | | | | | | | | | | 150 | |
| | 10 | | | | | | | | | | | | | |
| | 16 | | | | | | | | | | | | | |
| | 25 | | | | | | | | | | | | | |
| | 35 | | | | | | | | | | | | | |
| | 50 | | | | | | | | | | | | | |
| 1210 (3225) | 6.3 | | | | | | | | | | | | | |
| | 10 | | | | | | | | | | | | | |
| | 16 | | | | | | | | | | | | | |
| | 25 | | | | | | | | | | | | | |
| | 35 | | | | | | | | | | | | | |
| | 50 | | | | | | | | | | | | | |
| 1812(4532) | 6.3 | | | | | | | | | | | | | |
| 2220(5750) | 6.3 | | | | | | | | | | | | | |
| | 10 | | | | | | | | | | | | | |

Standard & High Capacitance Table (X6S)

| Size inch (mm) | Rated Voltage (Vdc) | Capacitance | | | | | | | | | | | |
|----------------------|---------------------------|-------------|-----|-----|-----|-----|-----|----|----|----|-----|--|--|
| | | nF | | | uF | | | | | | | | |
| | | 100 | 220 | 470 | 1.0 | 2.2 | 4.7 | 10 | 22 | 47 | 100 | | |
| 0402 (1005) | 2.5 | | | | | | | | | | | | |
| | 4.0 | | | | | | | | | | | | |
| | 6.3 | | | | | | | | | | | | |
| | 10 | | | | | | | | | | | | |
| | 25 | | | | | | | | | | | | |
| 0603 (1608) | 4.0 | | | | | | | | | | | | |
| | 6.3 | | | | | | | | | | | | |
| | 10 | | | | | | | | | | | | |
| | 16 | | | | | | | | | | | | |
| | 25 | | | | | | | | | | | | |
| 0805 (2012) | 2.5 | | | | | | | | | | | | |
| | 4.0 | | | | | | | | | | | | |
| | 6.3 | | | | | | | | | | | | |
| | 10 | | | | | | | | | | | | |
| | 16 | | | | | | | | | | | | |
| | 25 | | | | | | | | | | | | |
| 1206 (3216) | 4.0 | | | | | | | | | | | | |
| | 6.3 | | | | | | | | | | | | |
| | 10 | | | | | | | | | | | | |
| | 16 | | | | | | | | | | | | |
| | 25 | | | | | | | | | | | | |
| 1210 (3225) | 4.0 | | | | | | | | | | | | |
| | 6.3 | | | | | | | | | | | | |
| | 10 | | | | | | | | | | | | |
| | 16 | | | | | | | | | | | | |
| | 25 | | | | | | | | | | | | |

Standard & High Capacitors

Standard & High Capacitance Table (X7R)

| Size inch (mm) | Rated Voltage (Vdc) | Capacitance | | | | | | | | | | | | |
|----------------------|---------------------------|-------------|-----|-----|-----|-----|-----|-----|-----|-----|-----|----|----|-----|
| | | nF | | | | | uF | | | | | | | |
| | | 47 | 100 | 220 | 330 | 470 | 1.0 | 2.2 | 3.3 | 4.7 | 10 | 22 | 47 | 100 |
| 0402 (1005) | 6.3 | | | | | | X7S | | | | | | | |
| | 10 | | | | | | | | | | | | | |
| | 16 | | | | | | | | | | | | | |
| | 25 | | | | | | | | | | | | | |
| | 50 | | | | | | | | | | | | | |
| 0603 (1608) | 6.3 | | | | | | | | | | X7S | | | |
| | 10 | | | | | | | | | | | | | |
| | 16 | | | | | | | | | | | | | |
| | 25 | | | | | | | | | | | | | |
| | 50 | | | | | | | | | | | | | |
| 0805 (2012) | 6.3 | | | | | | | | | | | | | |
| | 10 | | | | | | | | | | | | | |
| | 16 | | | | | | | | | | | | | |
| | 25 | | | | | | | | | | | | | |
| | 35 | | | | | | | | | | | | | |
| | 50 | | | | | | | | | | | | | |
| 1206 (3216) | 6.3 | | | | | | | | | | | | | |
| | 10 | | | | | | | | | | | | | |
| | 16 | | | | | | | | | | | | | |
| | 25 | | | | | | | | | | | | | |
| | 35 | | | | | | | | | | | | | |
| | 50 | | | | | | | | | | | | | |
| 1210 (3225) | 6.3 | | | | | | | | | | | | | X7T |
| | 10 | | | | | | | | | | | | | |
| | 16 | | | | | | | | | | | | | |
| | 25 | | | | | | | | | | | | | |
| | 35 | | | | | | | | | | | | | |
| | 50 | | | | | | | | | | | | | |

Product Line Up (COG)

■ Size : 1.00 X 0.50mm (inch : 0402)

| Thickness Max. | Rated Voltage | Capacitance | Capacitance Tolerance | Part Number | Thickness Max. | Rated Voltage | Capacitance | Capacitance Tolerance | Part Number | | |
|----------------|---------------|------------------|-----------------------|------------------|----------------|---------------|------------------|-----------------------|------------------|------------------|------------------|
| 0.55mm | 10Vdc | 560pF | ±5% | CL05C561JP5N3NN□ | 0.55mm | 50Vdc | 2.2pF | ±0.1pF | CL05C2R2BB5N3NN□ | | |
| | | 16Vdc | 33pF | ±5% | | | CL05C330JO5N3NN□ | 2.2pF | ±0.25pF | CL05C2R2CB5N3NN□ | |
| | 100pF | | ±5% | CL05C101JO5N3NN□ | | | 2.4pF | ±0.1pF | CL05C2R4BB5N3NN□ | | |
| | 150pF | | ±5% | CL05C151JO5N3NN□ | | | 2.4pF | ±0.25pF | CL05C2R4CB5N3NN□ | | |
| | 220pF | | ±5% | CL05C221JO5N3NN□ | | | 2.5pF | ±0.1pF | CL05C2R5BB5N3NN□ | | |
| | 470pF | | ±5% | CL05C471JO5N3NN□ | | | 2.5pF | ±0.25pF | CL05C2R5CB5N3NN□ | | |
| | 1.0nF | | ±5% | CL05C102JO5N3NN□ | | | 2.7pF | ±0.1pF | CL05C2R7BB5N3NN□ | | |
| | 25Vdc | 10pF | ±0.5pF | CL05C100DA5N3NN□ | | | 2.7pF | ±0.25pF | CL05C2R7CB5N3NN□ | | |
| | | | ±5% | CL05C100JA5N3NN□ | | | 3.0pF | ±0.1pF | CL05C030BB5N3NN□ | | |
| | | | ±5% | CL05C110JA5N3NN□ | | | 3.0pF | ±0.25pF | CL05C030CB5N3NN□ | | |
| | | | ±5% | CL05C120JA5N3NN□ | | | 3.3pF | ±0.1pF | CL05C3R3BB5N3NN□ | | |
| | | | ±5% | CL05C130JA5N3NN□ | | | 3.3pF | ±0.25pF | CL05C3R3CB5N3NN□ | | |
| | | | ±5% | CL05C150JA5N3NN□ | | | 3.5pF | ±0.25pF | CL05C3R5CB5N3NN□ | | |
| | | | ±2% | CL05C180GA5N3NN□ | | | 3.6pF | ±0.25pF | CL05C3R6CB5N3NN□ | | |
| | | | ±5% | CL05C200JA5N3NN□ | | | 3.9pF | ±0.1pF | CL05C3R9BB5N3NN□ | | |
| | | | ±5% | CL05C220JA5N3NN□ | | | 3.9pF | ±0.25pF | CL05C3R9CB5N3NN□ | | |
| | | | ±2% | CL05C270GA5N3NN□ | | | 4.0pF | ±0.1pF | CL05C040BB5N3NN□ | | |
| | | | ±5% | CL05C270JA5N3NN□ | | | 4.0pF | ±0.25pF | CL05C040CB5N3NN□ | | |
| | | | ±5% | CL05C330JA5N3NN□ | | | 4.3pF | ±0.25pF | CL05C4R3CB5N3NN□ | | |
| | | | ±5% | CL05C390JA5N3NN□ | | | 4.7pF | ±0.1pF | CL05C4R7BB5N3NN□ | | |
| | | | ±5% | CL05C430JA5N3NN□ | | | 4.7pF | ±0.25pF | CL05C4R7CB5N3NN□ | | |
| | | | ±5% | CL05C470JA5N3NN□ | | | 4.7pF | ±0.5pF | CL05C4R7DB5N3NN□ | | |
| | | | ±5% | CL05C680JA5N3NN□ | | | 5.0pF | ±0.1pF | CL05C050BB5N3NN□ | | |
| | | | ±5% | CL05C820JA5N3NN□ | | | 5.0pF | ±0.25pF | CL05C050CB5N3NN□ | | |
| | | | ±5% | CL05C910JA5N3NN□ | | | 5.0pF | ±0.5pF | CL05C050DB5N3NN□ | | |
| | | | ±5% | CL05C101JA5N3NN□ | | | 5.1pF | ±0.25pF | CL05C5R1CB5N3NN□ | | |
| | | | ±10% | CL05C101KA5N3NN□ | | | 5.6pF | ±0.1pF | CL05C5R6BB5N3NN□ | | |
| | | | ±5% | CL05C121JA5N3NN□ | | | 5.6pF | ±0.25pF | CL05C5R6CB5N3NN□ | | |
| | | | ±5% | CL05C151JA5N3NN□ | | | 5.6pF | ±0.5pF | CL05C5R6DB5N3NN□ | | |
| | | | ±5% | CL05C181JA5N3NN□ | | | 6.0pF | ±0.25pF | CL05C060CB5N3NN□ | | |
| | | | ±1% | CL05C221FA5N3NN□ | | | 6.0pF | ±0.5pF | CL05C060DB5N3NN□ | | |
| | | | ±5% | CL05C221JA5N3NN□ | | | 6.2pF | ±0.25pF | CL05C6R2CB5N3NN□ | | |
| | | | ±5% | CL05C271JA5N3NN□ | | | 6.2pF | ±0.5pF | CL05C6R2DB5N3NN□ | | |
| | | | ±5% | CL05C561JA5N3NN□ | | | 6.8pF | ±0.1pF | CL05C6R8BB5N3NN□ | | |
| | | | ±5% | CL05C102JA5N3NN□ | | | 6.8pF | ±0.25pF | CL05C6R8CB5N3NN□ | | |
| | | | 50Vdc | 0.2pF | | | ±0.1pF | CL05C0R2BB5N3NN□ | 6.8pF | ±0.5pF | CL05C6R8DB5N3NN□ |
| | | | | | | | ±0.1pF | CL05C0R3BB5N3NN□ | 7.0pF | ±0.1pF | CL05C070BB5N3NN□ |
| | ±0.25pF | CL05C0R3CB5N3NN□ | | | | | 7.0pF | ±0.25pF | CL05C070CB5N3NN□ | | |
| | ±0.1pF | CL05C0R5BB5N3NN□ | | | | | 7.0pF | ±0.5pF | CL05C070DB5N3NN□ | | |
| | ±0.25pF | CL05C0R5CB5N3NN□ | | | | | 8.0pF | ±0.25pF | CL05C080CB5N3NN□ | | |
| | ±0.1pF | CL05C0R7BB5N3NN□ | | | | | 8.0pF | ±0.5pF | CL05C080DB5N3NN□ | | |
| | ±0.1pF | CL05CR75BB5N3NN□ | | | | | 8.2pF | ±0.1pF | CL05C8R2BB5N3NN□ | | |
| | ±0.25pF | CL05CR75CB5N3NN□ | | | | | 8.2pF | ±0.25pF | CL05C8R2CB5N3NN□ | | |
| | ±0.1pF | CL05C010BB5N3NN□ | | | | | 8.2pF | ±0.5pF | CL05C8R2DB5N3NN□ | | |
| | ±0.25pF | CL05C010CB5N3NN□ | | | | | 9.0pF | ±0.25pF | CL05C090CB5N3NN□ | | |
| | ±0.1pF | CL05C1R2BB5N3NN□ | | | | | 9.0pF | ±0.5pF | CL05C090DB5N3NN□ | | |
| | ±0.25pF | CL05C1R2CB5N3NN□ | | | | | 9.1pF | ±0.1pF | CL05C9R1BB5N3NN□ | | |
| | ±0.1pF | CL05C1R3BB5N3NN□ | | | | | 9.1pF | ±0.25pF | CL05C9R1CB5N3NN□ | | |
| | ±0.1pF | CL05C1R5BB5N3NN□ | | | | | 10pF | ±0.25pF | CL05C100CB5N3NN□ | | |
| | ±0.25pF | CL05C1R5CB5N3NN□ | | | | | 10pF | ±0.5pF | CL05C100DB5N3NN□ | | |
| | ±0.1pF | CL05C1R8BB5N3NN□ | | | | | 10pF | ±5% | CL05C100JB5N3NN□ | | |
| | ±0.25pF | CL05C1R8CB5N3NN□ | | | | | 11pF | ±5% | CL05C110JB5N3NN□ | | |
| | ±0.1pF | CL05C020BB5N3NN□ | | | | | 12pF | ±2% | CL05C120GB5N3NN□ | | |
| | ±0.25pF | CL05C020CB5N3NN□ | | | | | 12pF | ±5% | CL05C120JB5N3NN□ | | |

※ □ mark means packaging code. If you want to learn the code or quantity in detail, please see p.148

In order to move to the page directly, please click the here▶

Standard & High Capacitors

Product Line Up (COG)

■ Size : 1.00 X 0.50mm (inch : 0402)

| Thickness Max. | Rated Voltage | Capacitance | Capacitance Tolerance | Part Number |
|----------------|---------------|-----------------|-----------------------|-----------------|
| 0.55mm | 50Vdc | 13pF | ±5% | CL05C130JB5NNN□ |
| | | 14pF | ±5% | CL05C140JB5NNN□ |
| | | 15pF | ±5% | CL05C150JB5NNN□ |
| | | 16pF | ±5% | CL05C160JB5NNN□ |
| | | 17pF | ±5% | CL05C170JB5NNN□ |
| | | 18pF | ±2% | CL05C180GB5NNN□ |
| | | 18pF | ±5% | CL05C180JB5NNN□ |
| | | 20pF | ±2% | CL05C200GB5NNN□ |
| | | 20pF | ±5% | CL05C200JB5NNN□ |
| | | 22pF | ±1% | CL05C220FB5NNN□ |
| | | 22pF | ±2% | CL05C220GB5NNN□ |
| | | 22pF | ±5% | CL05C220JB5NNN□ |
| | | 24pF | ±5% | CL05C240JB5NNN□ |
| | | 26pF | ±5% | CL05C260JB5NNN□ |
| | | 27pF | ±1% | CL05C270FB5NNN□ |
| | | 27pF | ±5% | CL05C270JB5NNN□ |
| | | 30pF | ±5% | CL05C300JB5NNN□ |
| | | 33pF | ±1% | CL05C330FB5NNN□ |
| | | 33pF | ±5% | CL05C330JB5NNN□ |
| | | 36pF | ±5% | CL05C360JB5NNN□ |
| | | 39pF | ±2% | CL05C390GB5NNN□ |
| | | 39pF | ±5% | CL05C390JB5NNN□ |
| | | 43pF | ±2% | CL05C430GB5NNN□ |
| | | 43pF | ±5% | CL05C430JB5NNN□ |
| | | 47pF | ±1% | CL05C470FB5NNN□ |
| | | 47pF | ±5% | CL05C470JB5NNN□ |
| | | 51pF | ±5% | CL05C510JB5NNN□ |
| | | 56pF | ±1% | CL05C560FB5NNN□ |
| | | 56pF | ±5% | CL05C560JB5NNN□ |
| | | 62pF | ±2% | CL05C620GB5NNN□ |
| | | 62pF | ±5% | CL05C620JB5NNN□ |
| | | 68pF | ±5% | CL05C680JB5NNN□ |
| | | 75pF | ±5% | CL05C750JB5NNN□ |
| 82pF | ±5% | CL05C820JB5NNN□ | | |
| 91pF | ±5% | CL05C910JB5NNN□ | | |
| 100pF | ±1% | CL05C101FB5NNN□ | | |
| 100pF | ±2% | CL05C101GB5NNN□ | | |
| 100pF | ±5% | CL05C101JB5NNN□ | | |
| 100pF | ±10% | CL05C101KB5NNN□ | | |
| 110pF | ±5% | CL05C111JB5NNN□ | | |
| 120pF | ±2% | CL05C121GB5NNN□ | | |
| 120pF | ±5% | CL05C121JB5NNN□ | | |
| 130pF | ±5% | CL05C131JB5NNN□ | | |
| 150pF | ±5% | CL05C151JB5NNN□ | | |
| 160pF | ±5% | CL05C161JB5NNN□ | | |
| 180pF | ±5% | CL05C181JB5NNN□ | | |
| 200pF | ±5% | CL05C201JB5NNN□ | | |
| 220pF | ±1% | CL05C221FB5NNN□ | | |
| 220pF | ±2% | CL05C221GB5NNN□ | | |
| 220pF | ±5% | CL05C221JB5NNN□ | | |
| 240pF | ±5% | CL05C241JB5NNN□ | | |
| 270pF | ±5% | CL05C271JB5NNN□ | | |
| 300pF | ±5% | CL05C301JB5NNN□ | | |
| 330pF | ±5% | CL05C331JB5NNN□ | | |

| Thickness Max. | Rated Voltage | Capacitance | Capacitance Tolerance | Part Number |
|----------------|---------------|-------------|-----------------------|-----------------|
| 0.55mm | 50Vdc | 390pF | ±5% | CL05C391JB5NNN□ |
| | | 470pF | ±1% | CL05C471FB5NNN□ |
| | | 470pF | ±5% | CL05C471JB5NNN□ |
| | | 560pF | ±5% | CL05C561JB5NNN□ |
| | | 680pF | ±5% | CL05C681JB5NNN□ |
| | | 820pF | ±5% | CL05C821JB5NNN□ |
| | | 1.0nF | ±1% | CL05C102FB5NNN□ |
| | | 1.0nF | ±5% | CL05C102JB5NNN□ |

■ Size : 1.60 X 0.80mm (inch : 0603)

| Thickness Max. | Rated Voltage | Capacitance | Capacitance Tolerance | Part Number | |
|----------------|---------------|-----------------|-----------------------|-----------------|-----------------|
| 0.90mm | 16Vdc | 68pF | ±1% | CL10C680F08NNN□ | |
| | | 68pF | ±2% | CL10C680G08NNN□ | |
| | | 100pF | ±2% | CL10C101G08NNN□ | |
| | | 820pF | ±5% | CL10C821J08NNN□ | |
| | | 1.0nF | ±5% | CL10C102J08NNN□ | |
| | | 2.2nF | ±5% | CL10C222J08NNN□ | |
| | | 3.9nF | ±5% | CL10C392J08NNN□ | |
| | | 25Vdc | 10pF | ±0.5pF | CL10C100DA8NNN□ |
| | | | 10pF | ±5% | CL10C100JA8NNN□ |
| | | | 15pF | ±5% | CL10C150JA8NNN□ |
| | | | 20pF | ±5% | CL10C200JA8NNN□ |
| | | | 33pF | ±5% | CL10C330JA8NNN□ |
| | | | 47pF | ±5% | CL10C470JA8NNN□ |
| | | | 68pF | ±5% | CL10C680JA8NNN□ |
| | | | 100pF | ±5% | CL10C101JA8NNN□ |
| | 100pF | | ±10% | CL10C101KA8NNN□ | |
| | 120pF | | ±5% | CL10C121JA8NNN□ | |
| | 150pF | | ±5% | CL10C151JA8NNN□ | |
| | 180pF | | ±5% | CL10C181JA8NNN□ | |
| | 270pF | | ±10% | CL10C271KA8NNN□ | |
| | 330pF | | ±10% | CL10C331KA8NNN□ | |
| | 390pF | | ±5% | CL10C391JA8NNN□ | |
| | 470pF | | ±5% | CL10C471JA8NNN□ | |
| | 560pF | | ±5% | CL10C561JA8NNN□ | |
| | 680pF | | ±5% | CL10C681JA8NNN□ | |
| | 820pF | ±5% | CL10C821JA8NNN□ | | |
| | 1.5nF | ±2% | CL10C152GA8NNN□ | | |
| | 1.5nF | ±5% | CL10C152JA8NNN□ | | |
| | 1.8nF | ±5% | CL10C182JA8NNN□ | | |
| | 10nF | ±5% | CL10C103JA8NNN□ | | |
| | 1.0nF | ±2% | CL10C102GA8NNN□ | | |
| | 1.0nF | ±5% | CL10C102JA8NNN□ | | |
| | 2.2nF | ±2% | CL10C222GA8NNN□ | | |
| 2.2nF | ±5% | CL10C222JA8NNN□ | | | |
| 3.3nF | ±2% | CL10C332GA8NNN□ | | | |
| 3.3nF | ±5% | CL10C332JA8NNN□ | | | |
| 3.9nF | ±5% | CL10C392JA8NNN□ | | | |
| 50Vdc | 0.2pF | ±0.1pF | CL10C0R2BB8NNN□ | | |
| | 0.2pF | ±0.25pF | CL10C0R2CB8NNN□ | | |
| | 0.3pF | ±0.1pF | CL10C0R3BB8NNN□ | | |
| | 0.3pF | ±0.25pF | CL10C0R3CB8NNN□ | | |

* □ mark means packaging code. If you want to learn the code or quantity in detail, please see p.148

In order to move to the page directly, please click the here↑

Product Line Up (COG)

■ Size : 1.60 X 0.80mm (inch : 0603)

| Thickness Max. | Rated Voltage | Capacitance | Capacitance Tolerance | Part Number | Thickness Max. | Rated Voltage | Capacitance | Capacitance Tolerance | Part Number |
|----------------|---------------|-----------------|-----------------------|-----------------|-----------------|---------------|-------------|-----------------------|-----------------|
| 0.90mm | 50Vdc | 0.47pF | ±0.1pF | CL10CR47BB8NNN□ | 0.90mm | 50Vdc | 6.8pF | ±0.25pF | CL10C6R8CB8NNN□ |
| | | 0.5pF | ±0.1pF | CL10C0R5BB8NNN□ | | | 6.8pF | ±0.5pF | CL10C6R8DB8NNN□ |
| | | 0.5pF | ±0.25pF | CL10C0R5CB8NNN□ | | | 7.0pF | ±0.1pF | CL10C070BB8NNN□ |
| | | 0.56pF | ±0.1pF | CL10CR56BB8NNN□ | | | 7.0pF | ±0.25pF | CL10C070CB8NNN□ |
| | | 0.68pF | ±0.1pF | CL10CR68BB8NNN□ | | | 7.0pF | ±0.5pF | CL10C070DB8NNN□ |
| | | 0.75pF | ±0.1pF | CL10CR75BB8NNN□ | | | 7.5pF | ±0.1pF | CL10C7R5BB8NNN□ |
| | | 0.75pF | ±0.25pF | CL10CR75CB8NNN□ | | | 7.5pF | ±0.25pF | CL10C7R5CB8NNN□ |
| | | 0.8pF | ±0.1pF | CL10C0R8BB8NNN□ | | | 7.5pF | ±0.5pF | CL10C7R5DB8NNN□ |
| | | 0.82pF | ±0.1pF | CL10CR82BB8NNN□ | | | 8.0pF | ±0.25pF | CL10C080CB8NNN□ |
| | | 1.0pF | ±0.1pF | CL10C010BB8NNN□ | | | 8.0pF | ±0.5pF | CL10C080DB8NNN□ |
| | | 1.0pF | ±0.25pF | CL10C010CB8NNN□ | | | 8.2pF | ±0.1pF | CL10C8R2BB8NNN□ |
| | | 1.2pF | ±0.1pF | CL10C1R2BB8NNN□ | | | 8.2pF | ±0.25pF | CL10C8R2CB8NNN□ |
| | | 1.2pF | ±0.25pF | CL10C1R2CB8NNN□ | | | 8.2pF | ±0.5pF | CL10C8R2DB8NNN□ |
| | | 1.5pF | ±0.1pF | CL10C1R5BB8NNN□ | | | 9.0pF | ±0.25pF | CL10C090CB8NNN□ |
| | | 1.5pF | ±0.25pF | CL10C1R5CB8NNN□ | | | 9.0pF | ±0.5pF | CL10C090DB8NNN□ |
| | | 1.8pF | ±0.1pF | CL10C1R8BB8NNN□ | | | 9.1pF | ±0.25pF | CL10C9R1CB8NNN□ |
| | | 1.8pF | ±0.25pF | CL10C1R8CB8NNN□ | | | 9.1pF | ±0.5pF | CL10C9R1DB8NNN□ |
| | | 2.0pF | ±0.1pF | CL10C020BB8NNN□ | | | 10pF | ±0.1pF | CL10C100BB8NNN□ |
| | | 2.0pF | ±0.25pF | CL10C020CB8NNN□ | | | 10pF | ±0.25pF | CL10C100CB8NNN□ |
| | | 2.2pF | ±0.1pF | CL10C2R2BB8NNN□ | | | 10pF | ±0.5pF | CL10C100DB8NNN□ |
| | | 2.2pF | ±0.25pF | CL10C2R2CB8NNN□ | | | 10pF | ±1% | CL10C100FB8NNN□ |
| | | 2.4pF | ±0.1pF | CL10C2R4BB8NNN□ | | | 10pF | ±2% | CL10C100GB8NNN□ |
| | | 2.4pF | ±0.25pF | CL10C2R4CB8NNN□ | | | 10pF | ±5% | CL10C100JB8NNN□ |
| | | 2.5pF | ±0.1pF | CL10C2R5BB8NNN□ | | | 10pF | ±10% | CL10C100KB8NNN□ |
| | | 2.5pF | ±0.25pF | CL10C2R5CB8NNN□ | | | 11pF | ±2% | CL10C110GB8NNN□ |
| | | 2.7pF | ±0.1pF | CL10C2R7BB8NNN□ | | | 11pF | ±5% | CL10C110JB8NNN□ |
| | | 2.7pF | ±0.25pF | CL10C2R7CB8NNN□ | | | 12pF | ±1% | CL10C120FB8NNN□ |
| | | 3.0pF | ±0.1pF | CL10C030BB8NNN□ | | | 12pF | ±2% | CL10C120GB8NNN□ |
| | | 3.0pF | ±0.25pF | CL10C030CB8NNN□ | | | 12pF | ±5% | CL10C120JB8NNN□ |
| | | 3.3pF | ±0.1pF | CL10C3R3BB8NNN□ | | | 13pF | ±2% | CL10C130GB8NNN□ |
| | | 3.3pF | ±0.25pF | CL10C3R3CB8NNN□ | | | 13pF | ±5% | CL10C130JB8NNN□ |
| | | 3.5pF | ±0.25pF | CL10C3R5CB8NNN□ | | | 14pF | ±5% | CL10C140JB8NNN□ |
| | | 3.6pF | ±0.1pF | CL10C3R6BB8NNN□ | | | 15pF | ±1% | CL10C150FB8NNN□ |
| | | 3.6pF | ±0.25pF | CL10C3R6CB8NNN□ | | | 15pF | ±2% | CL10C150GB8NNN□ |
| | | 3.9pF | ±0.1pF | CL10C3R9BB8NNN□ | | | 15pF | ±5% | CL10C150JB8NNN□ |
| | | 3.9pF | ±0.25pF | CL10C3R9CB8NNN□ | | | 15pF | ±10% | CL10C150KB8NNN□ |
| | | 4.0pF | ±0.1pF | CL10C040BB8NNN□ | | | 16pF | ±5% | CL10C160JB8NNN□ |
| | | 4.0pF | ±0.25pF | CL10C040CB8NNN□ | | | 17pF | ±5% | CL10C170JB8NNN□ |
| | | 4.3pF | ±0.1pF | CL10C4R3BB8NNN□ | | | 18pF | ±1% | CL10C180FB8NNN□ |
| | | 4.3pF | ±0.25pF | CL10C4R3CB8NNN□ | | | 18pF | ±2% | CL10C180GB8NNN□ |
| 4.7pF | ±0.1pF | CL10C4R7BB8NNN□ | 18pF | ±5% | CL10C180JB8NNN□ | | | | |
| 4.7pF | ±0.25pF | CL10C4R7CB8NNN□ | 19pF | ±5% | CL10C190JB8NNN□ | | | | |
| 5.0pF | ±0.1pF | CL10C050BB8NNN□ | 20pF | ±1% | CL10C200FB8NNN□ | | | | |
| 5.0pF | ±0.25pF | CL10C050CB8NNN□ | 20pF | ±2% | CL10C200GB8NNN□ | | | | |
| 5.0pF | ±0.5pF | CL10C050DB8NNN□ | 20pF | ±5% | CL10C200JB8NNN□ | | | | |
| 5.1pF | ±0.25pF | CL10C5R1CB8NNN□ | 21pF | ±5% | CL10C210JB8NNN□ | | | | |
| 5.6pF | ±0.1pF | CL10C5R6BB8NNN□ | 22pF | ±1% | CL10C220FB8NNN□ | | | | |
| 5.6pF | ±0.25pF | CL10C5R6CB8NNN□ | 22pF | ±2% | CL10C220GB8NNN□ | | | | |
| 5.6pF | ±0.5pF | CL10C5R6DB8NNN□ | 22pF | ±5% | CL10C220JB8NNN□ | | | | |
| 6.0pF | ±0.25pF | CL10C060CB8NNN□ | 22pF | ±10% | CL10C220KB8NNN□ | | | | |
| 6.0pF | ±0.5pF | CL10C060DB8NNN□ | 23pF | ±5% | CL10C230JB8NNN□ | | | | |
| 6.2pF | ±0.25pF | CL10C6R2CB8NNN□ | 24pF | ±2% | CL10C240GB8NNN□ | | | | |
| 6.2pF | ±0.5pF | CL10C6R2DB8NNN□ | 24pF | ±5% | CL10C240JB8NNN□ | | | | |
| 6.8pF | ±0.1pF | CL10C6R8BB8NNN□ | 25pF | ±5% | CL10C250JB8NNN□ | | | | |

※ □ mark means packaging code. If you want to learn the code or quantity in detail, please see p.148

In order to move to the page directly, please click the here†

Standard & High Capacitors

Product Line Up (COG)

■ Size : 1.60 X 0.80mm (inch : 0603)

| Thickness Max. | Rated Voltage | Capacitance | Capacitance Tolerance | Part Number | Thickness Max. | Rated Voltage | Capacitance | Capacitance Tolerance | Part Number |
|----------------|---------------|-----------------|-----------------------|-----------------|-----------------|---------------|-------------|-----------------------|-----------------|
| 0.90mm | 50Vdc | 26pF | ±5% | CL10C260JB8NNN□ | 0.90mm | 50Vdc | 91pF | ±5% | CL10C910JB8NNN□ |
| | | 27pF | ±1% | CL10C270FB8NNN□ | | | 95pF | ±5% | CL10C950JB8NNN□ |
| | | 27pF | ±2% | CL10C270GB8NNN□ | | | 100pF | ±1% | CL10C101FB8NNN□ |
| | | 27pF | ±5% | CL10C270JB8NNN□ | | | 100pF | ±2% | CL10C101GB8NNN□ |
| | | 28pF | ±2% | CL10C280GB8NNN□ | | | 100pF | ±5% | CL10C101JB8NNN□ |
| | | 28pF | ±5% | CL10C280JB8NNN□ | | | 100pF | ±10% | CL10C101KB8NNN□ |
| | | 30pF | ±1% | CL10C300FB8NNN□ | | | 110pF | ±5% | CL10C111JB8NNN□ |
| | | 30pF | ±5% | CL10C300JB8NNN□ | | | 120pF | ±1% | CL10C121FB8NNN□ |
| | | 32pF | ±2% | CL10C320GB8NNN□ | | | 120pF | ±2% | CL10C121GB8NNN□ |
| | | 32pF | ±5% | CL10C320JB8NNN□ | | | 120pF | ±5% | CL10C121JB8NNN□ |
| | | 33pF | ±1% | CL10C330FB8NNN□ | | | 120pF | ±10% | CL10C121KB8NNN□ |
| | | 33pF | ±2% | CL10C330GB8NNN□ | | | 130pF | ±1% | CL10C131FB8NNN□ |
| | | 33pF | ±5% | CL10C330JB8NNN□ | | | 130pF | ±5% | CL10C131JB8NNN□ |
| | | 33pF | ±10% | CL10C330KB8NNN□ | | | 140pF | ±5% | CL10C141JB8NNN□ |
| | | 35pF | ±2% | CL10C350GB8NNN□ | | | 150pF | ±2% | CL10C151GB8NNN□ |
| | | 35pF | ±5% | CL10C350JB8NNN□ | | | 150pF | ±5% | CL10C151JB8NNN□ |
| | | 36pF | ±2% | CL10C360GB8NNN□ | | | 160pF | ±5% | CL10C161JB8NNN□ |
| | | 36pF | ±5% | CL10C360JB8NNN□ | | | 170pF | ±2% | CL10C171GB8NNN□ |
| | | 39pF | ±1% | CL10C390FB8NNN□ | | | 170pF | ±5% | CL10C171JB8NNN□ |
| | | 39pF | ±2% | CL10C390GB8NNN□ | | | 180pF | ±1% | CL10C181FB8NNN□ |
| | | 39pF | ±5% | CL10C390JB8NNN□ | | | 180pF | ±2% | CL10C181GB8NNN□ |
| | | 41pF | ±2% | CL10C410GB8NNN□ | | | 180pF | ±5% | CL10C181JB8NNN□ |
| | | 41pF | ±5% | CL10C410JB8NNN□ | | | 190pF | ±5% | CL10C191JB8NNN□ |
| | | 42pF | ±5% | CL10C420JB8NNN□ | | | 200pF | ±1% | CL10C201FB8NNN□ |
| | | 43pF | ±5% | CL10C430JB8NNN□ | | | 200pF | ±5% | CL10C201JB8NNN□ |
| | | 47pF | ±1% | CL10C470FB8NNN□ | | | 220pF | ±1% | CL10C221FB8NNN□ |
| | | 47pF | ±2% | CL10C470GB8NNN□ | | | 220pF | ±2% | CL10C221GB8NNN□ |
| | | 47pF | ±5% | CL10C470JB8NNN□ | | | 220pF | ±5% | CL10C221JB8NNN□ |
| | | 47pF | ±10% | CL10C470KB8NNN□ | | | 220pF | ±10% | CL10C221KB8NNN□ |
| | | 50pF | ±5% | CL10C500JB8NNN□ | | | 240pF | ±5% | CL10C241JB8NNN□ |
| | | 51pF | ±2% | CL10C510GB8NNN□ | | | 250pF | ±5% | CL10C251JB8NNN□ |
| | | 51pF | ±5% | CL10C510JB8NNN□ | | | 270pF | ±1% | CL10C271FB8NNN□ |
| | | 56pF | ±1% | CL10C560FB8NNN□ | | | 270pF | ±2% | CL10C271GB8NNN□ |
| | | 56pF | ±2% | CL10C560GB8NNN□ | | | 270pF | ±5% | CL10C271JB8NNN□ |
| | | 56pF | ±5% | CL10C560JB8NNN□ | | | 280pF | ±5% | CL10C281JB8NNN□ |
| | | 56pF | ±10% | CL10C560KB8NNN□ | | | 300pF | ±5% | CL10C301JB8NNN□ |
| | | 60pF | ±5% | CL10C600JB8NNN□ | | | 330pF | ±0.25pF | CL10C331CB8NNN□ |
| | | 62pF | ±2% | CL10C620GB8NNN□ | | | 330pF | ±1% | CL10C331FB8NNN□ |
| | | 62pF | ±5% | CL10C620JB8NNN□ | | | 330pF | ±2% | CL10C331GB8NNN□ |
| | | 68pF | ±1% | CL10C680FB8NNN□ | | | 330pF | ±5% | CL10C331JB8NNN□ |
| | | 68pF | ±2% | CL10C680GB8NNN□ | | | 350pF | ±5% | CL10C351JB8NNN□ |
| 68pF | ±5% | CL10C680JB8NNN□ | 360pF | ±5% | CL10C361JB8NNN□ | | | | |
| 68pF | ±10% | CL10C680KB8NNN□ | 390pF | ±1% | CL10C391FB8NNN□ | | | | |
| 70pF | ±2% | CL10C700GB8NNN□ | 390pF | ±2% | CL10C391GB8NNN□ | | | | |
| 70pF | ±5% | CL10C700JB8NNN□ | 390pF | ±5% | CL10C391JB8NNN□ | | | | |
| 75pF | ±2% | CL10C750GB8NNN□ | 390pF | ±10% | CL10C391KB8NNN□ | | | | |
| 75pF | ±5% | CL10C750JB8NNN□ | 430pF | ±5% | CL10C431JB8NNN□ | | | | |
| 80pF | ±2% | CL10C800GB8NNN□ | 470pF | ±1% | CL10C471FB8NNN□ | | | | |
| 80pF | ±5% | CL10C800JB8NNN□ | 470pF | ±2% | CL10C471GB8NNN□ | | | | |
| 82pF | ±1% | CL10C820FB8NNN□ | 470pF | ±5% | CL10C471JB8NNN□ | | | | |
| 82pF | ±2% | CL10C820GB8NNN□ | 470pF | ±10% | CL10C471KB8NNN□ | | | | |
| 82pF | ±5% | CL10C820JB8NNN□ | 500pF | ±5% | CL10C501JB8NNN□ | | | | |
| 90pF | ±5% | CL10C900JB8NNN□ | 510pF | ±5% | CL10C511JB8NNN□ | | | | |
| 91pF | ±2% | CL10C910JB8NNN□ | 560pF | ±1% | CL10C561FB8NNN□ | | | | |

※ □ mark means packaging code. If you want to learn the code or quantity in detail, please see p.148

In order to move to the page directly, please click the here†

Product Line Up (COG)

■ Size : 1.60 X 0.80mm (inch : 0603)

| Thickness Max. | Rated Voltage | Capacitance | Capacitance Tolerance | Part Number |
|----------------|---------------|------------------|-----------------------|------------------|
| 0.90mm | 50Vdc | 560pF | ±2% | CL10C561GB8NNN □ |
| | | 560pF | ±5% | CL10C561JB8NNN □ |
| | | 560pF | ±10% | CL10C561KB8NNN □ |
| | | 620pF | ±5% | CL10C621JB8NNN □ |
| | | 680pF | ±1% | CL10C681FB8NNN □ |
| | | 680pF | ±2% | CL10C681GB8NNN □ |
| | | 680pF | ±5% | CL10C681JB8NNN □ |
| | | 680pF | ±10% | CL10C681KB8NNN □ |
| | | 720pF | ±5% | CL10C721JB8NNN □ |
| | | 750pF | ±5% | CL10C751JB8NNN □ |
| | | 820pF | ±1% | CL10C821FB8NNN □ |
| | | 820pF | ±2% | CL10C821GB8NNN □ |
| | | 820pF | ±5% | CL10C821JB8NNN □ |
| | | 820pF | ±10% | CL10C821KB8NNN □ |
| | | 910pF | ±5% | CL10C911JB8NNN □ |
| | | 1.0nF | ±1% | CL10C102FB8NNN □ |
| | | 1.0nF | ±2% | CL10C102GB8NNN □ |
| | | 1.0nF | ±5% | CL10C102JB8NNN □ |
| | | 1.2nF | ±5% | CL10C122JB8NNN □ |
| | | 1.5nF | ±5% | CL10C152JB8NNN □ |
| | | 1.8nF | ±5% | CL10C182JB8NNN □ |
| | | 2.2nF | ±5% | CL10C222JB8NNN □ |
| | | 2.7nF | ±5% | CL10C272JB8NNN □ |
| | | 3.3nF | ±5% | CL10C332JB8NNN □ |
| | | 4.7nF | ±5% | CL10C472JB8NNN □ |
| 5.6nF | ±5% | CL10C562JB8NNN □ | | |

■ Size : 2.00 X 1.25mm (inch : 0805)

| Thickness Max. | Rated Voltage | Capacitance | Capacitance Tolerance | Part Number | |
|----------------|---------------|-------------|-----------------------|------------------|------------------|
| 0.75mm | 25Vdc | 220pF | ±2% | CL21C221GAANNN □ | |
| | | 220pF | ±5% | CL21C221JAANNN □ | |
| | | 270pF | ±5% | CL21C271JAANNN □ | |
| | | 680pF | ±5% | CL21C681JAANNN □ | |
| | | 1.5nF | ±5% | CL21C152JAANNN □ | |
| | | 3.9nF | ±5% | CL21C392JAANNN □ | |
| | | 50Vdc | 0.47pF | ±0.1pF | CL21CR47BBANNN □ |
| | | | 0.47pF | ±0.25pF | CL21CR47CBANNN □ |
| | | | 0.5pF | ±0.1pF | CL21C0R5BBANNN □ |
| | | | 0.5pF | ±0.25pF | CL21C0R5CBANNN □ |
| | | | 0.68pF | ±0.1pF | CL21CR68BBANNN □ |
| | 0.75pF | | ±0.1pF | CL21CR75BBANNN □ | |
| | 0.82pF | | ±0.1pF | CL21CR82BBANNN □ | |
| | 0.82pF | | ±0.25pF | CL21CR82CBANNN □ | |
| | 1.0pF | | ±0.1pF | CL21C010BBANNN □ | |
| | 1.0pF | | ±0.25pF | CL21C010CBANNN □ | |
| | 1.2pF | | ±0.1pF | CL21C1R2BBANNN □ | |
| | 1.2pF | | ±0.25pF | CL21C1R2CBANNN □ | |
| | 1.5pF | | ±0.1pF | CL21C1R5BBANNN □ | |
| | 1.5pF | | ±0.25pF | CL21C1R5CBANNN □ | |
| | 1.8pF | ±0.1pF | CL21C1R8BBANNN □ | | |
| | 1.8pF | ±0.25pF | CL21C1R8CBANNN □ | | |
| | 1.8pF | ±0.5pF | CL21C1R8DBANNN □ | | |

| Thickness Max. | Rated Voltage | Capacitance | Capacitance Tolerance | Part Number |
|----------------|---------------|------------------|-----------------------|------------------|
| 0.75mm | 50Vdc | 2.0pF | ±0.25pF | CL21C020CBANNN □ |
| | | 2.2pF | ±0.1pF | CL21C2R2BBANNN □ |
| | | 2.2pF | ±0.25pF | CL21C2R2CBANNN □ |
| | | 2.4pF | ±0.25pF | CL21C2R4CBANNN □ |
| | | 2.5pF | ±0.25pF | CL21C2R5CBANNN □ |
| | | 2.7pF | ±0.1pF | CL21C2R7BBANNN □ |
| | | 2.7pF | ±0.25pF | CL21C2R7CBANNN □ |
| | | 3.0pF | ±0.1pF | CL21C030BBANNN □ |
| | | 3.0pF | ±0.25pF | CL21C030CBANNN □ |
| | | 3.2pF | ±0.25pF | CL21C3R2CBANNN □ |
| | | 3.3pF | ±0.1pF | CL21C3R3BBANNN □ |
| | | 3.3pF | ±0.25pF | CL21C3R3CBANNN □ |
| | | 3.6pF | ±0.1pF | CL21C3R6BBANNN □ |
| | | 3.6pF | ±0.25pF | CL21C3R6CBANNN □ |
| | | 3.9pF | ±0.1pF | CL21C3R9BBANNN □ |
| | | 3.9pF | ±0.25pF | CL21C3R9CBANNN □ |
| | | 4.0pF | ±0.1pF | CL21C040BBANNN □ |
| | | 4.0pF | ±0.25pF | CL21C040CBANNN □ |
| | | 4.7pF | ±0.1pF | CL21C4R7BBANNN □ |
| | | 4.7pF | ±0.25pF | CL21C4R7CBANNN □ |
| | | 5.0pF | ±0.1pF | CL21C050BBANNN □ |
| | | 5.0pF | ±0.25pF | CL21C050CBANNN □ |
| | | 5.1pF | ±0.25pF | CL21C5R1CBANNN □ |
| | | 5.6pF | ±0.25pF | CL21C5R6CBANNN □ |
| | | 5.6pF | ±0.5pF | CL21C5R6DBANNN □ |
| | | 6.0pF | ±0.25pF | CL21C060CBANNN □ |
| | | 6.0pF | ±0.5pF | CL21C060DBANNN □ |
| | | 6.2pF | ±0.25pF | CL21C6R2CBANNN □ |
| | | 6.8pF | ±0.25pF | CL21C6R8CBANNN □ |
| | | 6.8pF | ±0.5pF | CL21C6R8DBANNN □ |
| | | 7.0pF | ±0.25pF | CL21C070CBANNN □ |
| | | 7.0pF | ±0.5pF | CL21C070DBANNN □ |
| | | 7.5pF | ±0.25pF | CL21C7R5CBANNN □ |
| | | 7.5pF | ±0.5pF | CL21C7R5DBANNN □ |
| | | 8.0pF | ±0.25pF | CL21C080CBANNN □ |
| | | 8.0pF | ±0.5pF | CL21C080DBANNN □ |
| | | 8.2pF | ±0.1pF | CL21C8R2BBANNN □ |
| | | 8.2pF | ±0.25pF | CL21C8R2CBANNN □ |
| | | 8.2pF | ±0.5pF | CL21C8R2DBANNN □ |
| | | 9.0pF | ±0.25pF | CL21C090CBANNN □ |
| | | 9.0pF | ±0.5pF | CL21C090DBANNN □ |
| | | 10pF | ±0.1pF | CL21C100BBANNN □ |
| 10pF | ±0.25pF | CL21C100CBANNN □ | | |
| 10pF | ±0.5pF | CL21C100DBANNN □ | | |
| 10pF | ±1% | CL21C100FBANNN □ | | |
| 10pF | ±2% | CL21C100GBANNN □ | | |
| 10pF | ±5% | CL21C100JBANNN □ | | |
| 12pF | ±1% | CL21C120FBANNN □ | | |
| 12pF | ±2% | CL21C120GBANNN □ | | |
| 12pF | ±5% | CL21C120JBANNN □ | | |
| 12pF | ±5% | CL21C130JBANNN □ | | |
| 13pF | ±5% | CL21C130JBANNN □ | | |
| 14pF | ±5% | CL21C140JBANNN □ | | |
| 15pF | ±2% | CL21C150GBANNN □ | | |
| 15pF | ±5% | CL21C150JBANNN □ | | |

※ □ mark means packaging code. If you want to learn the code or quantity in detail, please see p.148

In order to move to the page directly, please click the here†

Standard & High Capacitors

Product Line Up (C0G)

■ Size : 2.00 X 1.25mm (inch : 0805)

| Thickness Max. | Rated Voltage | Capacitance | Capacitance Tolerance | Part Number | Thickness Max. | Rated Voltage | Capacitance | Capacitance Tolerance | Part Number |
|----------------|---------------|-----------------|-----------------------|-----------------|-----------------|---------------|-------------|-----------------------|-----------------|
| 0.75mm | 50Vdc | 15pF | ±10% | CL21C150KBANNN□ | 0.75mm | 50Vdc | 75pF | ±5% | CL21C750JBANNN□ |
| | | 16pF | ±5% | CL21C160JBANNN□ | | | 80pF | ±2% | CL21C800GBANNN□ |
| | | 17pF | ±5% | CL21C170JBANNN□ | | | 80pF | ±5% | CL21C800JBANNN□ |
| | | 18pF | ±1% | CL21C180FBANNN□ | | | 82pF | ±1% | CL21C820FBANNN□ |
| | | 18pF | ±2% | CL21C180GBANNN□ | | | 82pF | ±2% | CL21C820GBANNN□ |
| | | 18pF | ±5% | CL21C180JBANNN□ | | | 82pF | ±5% | CL21C820JBANNN□ |
| | | 20pF | ±2% | CL21C200GBANNN□ | | | 90pF | ±5% | CL21C900JBANNN□ |
| | | 20pF | ±5% | CL21C200JBANNN□ | | | 91pF | ±5% | CL21C910JBANNN□ |
| | | 22pF | ±1% | CL21C220FBANNN□ | | | 100pF | ±1% | CL21C101FBANNN□ |
| | | 22pF | ±2% | CL21C220GBANNN□ | | | 100pF | ±2% | CL21C101GBANNN□ |
| | | 22pF | ±5% | CL21C220JBANNN□ | | | 100pF | ±5% | CL21C101JBANNN□ |
| | | 22pF | ±10% | CL21C220KBANNN□ | | | 100pF | ±10% | CL21C101KBANNN□ |
| | | 23pF | ±5% | CL21C230JBANNN□ | | | 110pF | ±5% | CL21C111JBANNN□ |
| | | 24pF | ±2% | CL21C240GBANNN□ | | | 120pF | ±1% | CL21C121FBANNN□ |
| | | 24pF | ±5% | CL21C240JBANNN□ | | | 120pF | ±2% | CL21C121GBANNN□ |
| | | 25pF | ±5% | CL21C250JBANNN□ | | | 120pF | ±5% | CL21C121JBANNN□ |
| | | 27pF | ±1% | CL21C270FBANNN□ | | | 130pF | ±5% | CL21C131JBANNN□ |
| | | 27pF | ±2% | CL21C270GBANNN□ | | | 150pF | ±1% | CL21C151FBANNN□ |
| | | 27pF | ±5% | CL21C270JBANNN□ | | | 150pF | ±2% | CL21C151GBANNN□ |
| | | 28pF | ±5% | CL21C280JBANNN□ | | | 150pF | ±5% | CL21C151JBANNN□ |
| | | 30pF | ±5% | CL21C300JBANNN□ | | | 160pF | ±5% | CL21C161JBANNN□ |
| | | 32pF | ±2% | CL21C320GBANNN□ | | | 180pF | ±1% | CL21C181FBANNN□ |
| | | 32pF | ±5% | CL21C320JBANNN□ | | | 180pF | ±2% | CL21C181GBANNN□ |
| | | 33pF | ±1% | CL21C330FBANNN□ | | | 180pF | ±5% | CL21C181JBANNN□ |
| | | 33pF | ±2% | CL21C330GBANNN□ | | | 200pF | ±5% | CL21C201JBANNN□ |
| | | 33pF | ±5% | CL21C330JBANNN□ | | | 220pF | ±1% | CL21C221FBANNN□ |
| | | 33pF | ±10% | CL21C330KBANNN□ | | | 220pF | ±2% | CL21C221GBANNN□ |
| | | 36pF | ±5% | CL21C360JBANNN□ | | | 220pF | ±5% | CL21C221JBANNN□ |
| | | 38pF | ±2% | CL21C380GBANNN□ | | | 220pF | ±10% | CL21C221KBANNN□ |
| | | 38pF | ±5% | CL21C380JBANNN□ | | | 240pF | ±5% | CL21C241JBANNN□ |
| | | 39pF | ±2% | CL21C390GBANNN□ | | | 250pF | ±5% | CL21C251JBANNN□ |
| | | 39pF | ±5% | CL21C390JBANNN□ | | | 260pF | ±5% | CL21C261JBANNN□ |
| | | 40pF | ±2% | CL21C400GBANNN□ | | | 270pF | ±1% | CL21C271FBANNN□ |
| | | 40pF | ±5% | CL21C400JBANNN□ | | | 270pF | ±2% | CL21C271GBANNN□ |
| | | 43pF | ±5% | CL21C430JBANNN□ | | | 270pF | ±5% | CL21C271JBANNN□ |
| | | 47pF | ±1% | CL21C470FBANNN□ | | | 300pF | ±5% | CL21C301JBANNN□ |
| | | 47pF | ±2% | CL21C470GBANNN□ | | | 330pF | ±1% | CL21C331FBANNN□ |
| | | 47pF | ±5% | CL21C470JBANNN□ | | | 330pF | ±2% | CL21C331GBANNN□ |
| | | 47pF | ±10% | CL21C470KBANNN□ | | | 330pF | ±5% | CL21C331JBANNN□ |
| | | 50pF | ±5% | CL21C500JBANNN□ | | | 360pF | ±5% | CL21C361JBANNN□ |
| | | 51pF | ±2% | CL21C510GBANNN□ | | | 390pF | ±1% | CL21C391FBANNN□ |
| | | 51pF | ±5% | CL21C510JBANNN□ | | | 390pF | ±2% | CL21C391GBANNN□ |
| | | 56pF | ±1% | CL21C560FBANNN□ | | | 390pF | ±5% | CL21C391JBANNN□ |
| | | 56pF | ±2% | CL21C560GBANNN□ | | | 430pF | ±5% | CL21C431JBANNN□ |
| | | 56pF | ±5% | CL21C560JBANNN□ | | | 470pF | ±1% | CL21C471FBANNN□ |
| 60pF | ±5% | CL21C600JBANNN□ | 470pF | ±2% | CL21C471GBANNN□ | | | | |
| 62pF | ±5% | CL21C620JBANNN□ | 470pF | ±5% | CL21C471JBANNN□ | | | | |
| 68pF | ±1% | CL21C680FBANNN□ | 470pF | ±10% | CL21C471KBANNN□ | | | | |
| 68pF | ±2% | CL21C680GBANNN□ | 510pF | ±5% | CL21C511JBANNN□ | | | | |
| 68pF | ±5% | CL21C680JBANNN□ | 560pF | ±1% | CL21C561FBANNN□ | | | | |
| 68pF | ±10% | CL21C680KBANNN□ | 560pF | ±2% | CL21C561GBANNN□ | | | | |
| 70pF | ±5% | CL21C700JBANNN□ | 560pF | ±5% | CL21C561JBANNN□ | | | | |
| 70pF | ±10% | CL21C700KBANNN□ | 680pF | ±5% | CL21C681JBANNN□ | | | | |
| 75pF | ±2% | CL21C750GBANNN□ | 5.0pF | ±0.25pF | CL21C050CBCNNN□ | | | | |

* □ mark means packaging code. If you want to learn the code or quantity in detail, please see p.148

In order to move to the page directly, please click the here↑

Product Line Up (COG)

■ Size : 2.00 X 1.25mm (inch : 0805)

| Thickness Max. | Rated Voltage | Capacitance | Capacitance Tolerance | Part Number | Thickness Max. | Rated Voltage | Capacitance | Capacitance Tolerance | Part Number | |
|----------------|---------------|------------------|-----------------------|------------------|----------------|---------------|------------------|-----------------------|------------------|------------------|
| 0.95mm | 50Vdc | 10pF | ±0.1pF | CL21C100BCCNND □ | 0.95mm | 50Vdc | 1.0nF | ±2% | CL21C102GBCNND □ | |
| | | 10pF | ±5% | CL21C100JBCNND □ | | | 1.0nF | ±5% | CL21C102JBCNND □ | |
| | | 11pF | ±2% | CL21C110GBCNND □ | | | 1.0nF | ±10% | CL21C102KBCNND □ | |
| | | 11pF | ±5% | CL21C110JBCNND □ | 1.35mm | 25Vdc | 270pF | ±5% | CL21C271JAFNND □ | |
| | | 12pF | ±2% | CL21C120GBCNND □ | | | 2.7nF | ±5% | CL21C272JAFNND □ | |
| | | 12pF | ±5% | CL21C120JBCNND □ | | | 3.3nF | ±5% | CL21C332JAFNND □ | |
| | | 13pF | ±2% | CL21C130GBCNND □ | | | 3.9nF | ±5% | CL21C392JAFNND □ | |
| | | 15pF | ±2% | CL21C150GBCNND □ | | | 4.7nF | ±5% | CL21C472JAFNND □ | |
| | | 15pF | ±5% | CL21C150JBCNND □ | | | 4.7nF | ±10% | CL21C472KAFNND □ | |
| | | 16pF | ±2% | CL21C160GBCNND □ | | | 8.2nF | ±5% | CL21C822JAFNND □ | |
| | | 18pF | ±2% | CL21C180GBCNND □ | | | 10nF | ±2% | CL21C103GAFNND □ | |
| | | 18pF | ±5% | CL21C180JBCNND □ | | | 10nF | ±5% | CL21C103JAFNND □ | |
| | | 20pF | ±2% | CL21C200GBCNND □ | | | 50Vdc | 1.2nF | ±1% | CL21C122FBFNND □ |
| | | 20pF | ±5% | CL21C200JBCNND □ | | | | 1.2nF | ±2% | CL21C122GBFNND □ |
| | | 22pF | ±2% | CL21C220GBCNND □ | | | | 1.2nF | ±5% | CL21C122JBFNND □ |
| | | 22pF | ±5% | CL21C220JBCNND □ | | | | 1.3nF | ±5% | CL21C132JBFNND □ |
| | | 24pF | ±2% | CL21C240GBCNND □ | | | | 1.5nF | ±1% | CL21C152FBFNND □ |
| | | 30pF | ±2% | CL21C300GBCNND □ | | | | 1.5nF | ±2% | CL21C152GBFNND □ |
| | | 30pF | ±5% | CL21C300JBCNND □ | | | | 1.5nF | ±5% | CL21C152JBFNND □ |
| | | 36pF | ±2% | CL21C360GBCNND □ | | | | 1.6nF | ±5% | CL21C162JBFNND □ |
| | | 36pF | ±5% | CL21C360JBCNND □ | 1.8nF | ±2% | | CL21C182GBFNND □ | | |
| | | 39pF | ±5% | CL21C390JBCNND □ | 1.8nF | ±5% | | CL21C182JBFNND □ | | |
| | | 43pF | ±2% | CL21C430GBCNND □ | 2.0nF | ±5% | | CL21C202JBFNND □ | | |
| | | 43pF | ±5% | CL21C430JBCNND □ | 2.2nF | ±2% | | CL21C222GBFNND □ | | |
| | | 47pF | ±5% | CL21C470JBCNND □ | 2.2nF | ±5% | | CL21C222JBFNND □ | | |
| | | 51pF | ±5% | CL21C510JBCNND □ | 2.7nF | ±5% | | CL21C272JBFNND □ | | |
| | | 51pF | ±10% | CL21C510KBCNND □ | 3.3nF | ±5% | CL21C332JBFNND □ | | | |
| | | 56pF | ±2% | CL21C560GBCNND □ | 3.9nF | ±5% | CL21C392JBFNND □ | | | |
| | | 56pF | ±5% | CL21C560JBCNND □ | 4.7nF | ±5% | CL21C472JBFNND □ | | | |
| | | 68pF | ±5% | CL21C680JBCNND □ | 5.6nF | ±5% | CL21C562JBFNND □ | | | |
| | | 82pF | ±5% | CL21C820JBCNND □ | 6.8nF | ±5% | CL21C682JBFNND □ | | | |
| | | 100pF | ±5% | CL21C101JBCNND □ | 10nF | ±5% | CL21C103JBFNND □ | | | |
| 120pF | ±1% | CL21C121FBCNND □ | | | | | | | | |
| 120pF | ±5% | CL21C121JBCNND □ | | | | | | | | |
| 120pF | ±10% | CL21C121KBCNND □ | | | | | | | | |
| 150pF | ±5% | CL21C151JBCNND □ | | | | | | | | |
| 180pF | ±5% | CL21C181JBCNND □ | | | | | | | | |
| 220pF | ±5% | CL21C221JBCNND □ | | | | | | | | |
| 300pF | ±5% | CL21C301JBCNND □ | | | | | | | | |
| 330pF | ±2% | CL21C331GBCNND □ | | | | | | | | |
| 470pF | ±5% | CL21C471JBCNND □ | | | | | | | | |
| 510pF | ±5% | CL21C511JBCNND □ | | | | | | | | |
| 560pF | ±5% | CL21C561JBCNND □ | | | | | | | | |
| 600pF | ±5% | CL21C601JBCNND □ | | | | | | | | |
| 620pF | ±5% | CL21C621JBCNND □ | | | | | | | | |
| 680pF | ±1% | CL21C681FBCNND □ | | | | | | | | |
| 680pF | ±2% | CL21C681GBCNND □ | | | | | | | | |
| 680pF | ±5% | CL21C681JBCNND □ | | | | | | | | |
| 750pF | ±5% | CL21C751JBCNND □ | | | | | | | | |
| 820pF | ±1% | CL21C821FBCNND □ | | | | | | | | |
| 820pF | ±2% | CL21C821GBCNND □ | | | | | | | | |
| 820pF | ±5% | CL21C821JBCNND □ | | | | | | | | |
| 910pF | ±5% | CL21C911JBCNND □ | | | | | | | | |
| 1.0nF | ±1% | CL21C102FBCNND □ | | | | | | | | |

■ Size : 3.20 X 1.60mm (inch : 1206)

| Thickness Max. | Rated Voltage | Capacitance | Capacitance Tolerance | Part Number |
|----------------|---------------|-------------|-----------------------|------------------|
| 1.00mm | 25Vdc | 330pF | ±5% | CL31C331JACNND □ |
| | | 470pF | ±10% | CL31C471KACNND □ |
| | 50Vdc | 0.5pF | ±0.25pF | CL31C0R5CBCNND □ |
| | | 1.0pF | ±0.25pF | CL31C010CBCNND □ |
| | | 1.2pF | ±0.25pF | CL31C1R2CBCNND □ |
| | | 1.8pF | ±0.25pF | CL31C1R8CBCNND □ |
| | | 2.0pF | ±0.25pF | CL31C020CBCNND □ |
| | | 2.2pF | ±0.25pF | CL31C2R2CBCNND □ |
| | | 2.7pF | ±0.1pF | CL31C2R7BBCNND □ |
| | | 2.7pF | ±0.25pF | CL31C2R7CBCNND □ |
| | | 3.0pF | ±0.25pF | CL31C030CBCNND □ |
| | | 3.3pF | ±0.25pF | CL31C3R3CBCNND □ |
| | | 3.9pF | ±0.1pF | CL31C3R9BBCNND □ |
| | | 4.3pF | ±0.1pF | CL31C4R3BBCNND □ |
| | | 4.7pF | ±0.25pF | CL31C4R7CBCNND □ |
| | | 5.6pF | ±0.25pF | CL31C5R6CBCNND □ |
| | | 5.6pF | ±0.5pF | CL31C5R6DBCNND □ |

※ □ mark means packaging code. If you want to learn the code or quantity in detail, please see p.148

In order to move to the page directly, please click the here†

Standard & High Capacitors

Product Line Up (COG)

■ Size : 3.20 X 1.60mm (inch : 1206)

| Thickness Max. | Rated Voltage | Capacitance | Capacitance Tolerance | Part Number | Thickness Max. | Rated Voltage | Capacitance | Capacitance Tolerance | Part Number | | |
|----------------|---------------|----------------|-----------------------|----------------|----------------|----------------|-------------|-----------------------|----------------|-----|----------------|
| 1.00mm | 50Vdc | 6.0pF | ±0.5pF | CL31C060DBCNN□ | 1.00mm | 50Vdc | 200pF | ±5% | CL31C201JBCNN□ | | |
| | | 6.8pF | ±0.25pF | CL31C6R8CBCNN□ | | | 220pF | ±1% | CL31C221FBCNN□ | | |
| | | 8.0pF | ±0.25pF | CL31C080CBCNN□ | | | 220pF | ±2% | CL31C221GBCNN□ | | |
| | | 8.2pF | ±0.25pF | CL31C8R2CBCNN□ | | | 220pF | ±5% | CL31C221JBCNN□ | | |
| | | 10pF | ±0.5pF | CL31C100DBCNN□ | | | 240pF | ±5% | CL31C241JBCNN□ | | |
| | | 10pF | ±5% | CL31C100JBCNN□ | | | 270pF | ±5% | CL31C271JBCNN□ | | |
| | | 11pF | ±5% | CL31C110JBCNN□ | | | 300pF | ±5% | CL31C301JBCNN□ | | |
| | | 12pF | ±5% | CL31C120JBCNN□ | | | 330pF | ±1% | CL31C331FBCNN□ | | |
| | | 13pF | ±5% | CL31C130JBCNN□ | | | 330pF | ±2% | CL31C331GBCNN□ | | |
| | | 15pF | ±5% | CL31C150JBCNN□ | | | 330pF | ±5% | CL31C331JBCNN□ | | |
| | | 15pF | ±10% | CL31C150KBCNN□ | | | 360pF | ±1% | CL31C361FBCNN□ | | |
| | | 16pF | ±5% | CL31C160JBCNN□ | | | 360pF | ±5% | CL31C361JBCNN□ | | |
| | | 18pF | ±5% | CL31C180JBCNN□ | | | 390pF | ±1% | CL31C391FBCNN□ | | |
| | | 20pF | ±2% | CL31C200GBCNN□ | | | 390pF | ±2% | CL31C391GBCNN□ | | |
| | | 20pF | ±5% | CL31C200JBCNN□ | | | 390pF | ±5% | CL31C391JBCNN□ | | |
| | | 22pF | ±1% | CL31C220FBCNN□ | | | 430pF | ±5% | CL31C431JBCNN□ | | |
| | | 22pF | ±5% | CL31C220JBCNN□ | | | 470pF | ±1% | CL31C471FBCNN□ | | |
| | | 24pF | ±2% | CL31C240GBCNN□ | | | 470pF | ±2% | CL31C471GBCNN□ | | |
| | | 24pF | ±5% | CL31C240JBCNN□ | | | 470pF | ±5% | CL31C471JBCNN□ | | |
| | | 25pF | ±5% | CL31C250JBCNN□ | | | 470pF | ±10% | CL31C471KBCNN□ | | |
| | | 27pF | ±1% | CL31C270FBCNN□ | | | 510pF | ±5% | CL31C511JBCNN□ | | |
| | | 27pF | ±2% | CL31C270GBCNN□ | | | 560pF | ±1% | CL31C561FBCNN□ | | |
| | | 27pF | ±5% | CL31C270JBCNN□ | | | 560pF | ±5% | CL31C561JBCNN□ | | |
| | | 30pF | ±5% | CL31C300JBCNN□ | | | 620pF | ±5% | CL31C621JBCNN□ | | |
| | | 33pF | ±1% | CL31C330FBCNN□ | | | 680pF | ±1% | CL31C681FBCNN□ | | |
| | | 33pF | ±5% | CL31C330JBCNN□ | | | 680pF | ±2% | CL31C681GBCNN□ | | |
| | | 36pF | ±5% | CL31C360JBCNN□ | | | 680pF | ±5% | CL31C681JBCNN□ | | |
| | | 38pF | ±2% | CL31C380GBCNN□ | | | 750pF | ±5% | CL31C751JBCNN□ | | |
| | | 39pF | ±2% | CL31C390GBCNN□ | | | 820pF | ±5% | CL31C821JBCNN□ | | |
| | | 39pF | ±5% | CL31C390JBCNN□ | | | 910pF | ±5% | CL31C911JBCNN□ | | |
| | | 43pF | ±2% | CL31C430GBCNN□ | | | 1.0nF | ±1% | CL31C102FBCNN□ | | |
| | | 43pF | ±5% | CL31C430JBCNN□ | | | 1.0nF | ±2% | CL31C102GBCNN□ | | |
| | | 47pF | ±5% | CL31C470JBCNN□ | | | 1.0nF | ±5% | CL31C102JBCNN□ | | |
| | | 47pF | ±10% | CL31C470KBCNN□ | | | 1.2nF | ±2% | CL31C122GBCNN□ | | |
| | | 51pF | ±5% | CL31C510JBCNN□ | | | 1.2nF | ±5% | CL31C122JBCNN□ | | |
| | | 56pF | ±2% | CL31C560GBCNN□ | | | 1.5nF | ±2% | CL31C152GBCNN□ | | |
| | | 56pF | ±5% | CL31C560JBCNN□ | | | 1.5nF | ±5% | CL31C152JBCNN□ | | |
| | | 62pF | ±5% | CL31C620JBCNN□ | | | 1.8nF | ±2% | CL31C182GBCNN□ | | |
| | | 68pF | ±2% | CL31C680GBCNN□ | | | 1.8nF | ±5% | CL31C182JBCNN□ | | |
| | | 68pF | ±5% | CL31C680JBCNN□ | | | 2.0nF | ±5% | CL31C202JBCNN□ | | |
| | | 82pF | ±5% | CL31C820JBCNN□ | | | 2.2nF | ±1% | CL31C222FBCNN□ | | |
| | | 91pF | ±5% | CL31C910JBCNN□ | | | 2.2nF | ±2% | CL31C222GBCNN□ | | |
| | | 100pF | ±2% | CL31C101GBCNN□ | | | 2.2nF | ±5% | CL31C222JBCNN□ | | |
| | | 100pF | ±5% | CL31C101JBCNN□ | | | 1.40mm | 25Vdc | 4.7nF | ±2% | CL31C472GAFNN□ |
| | | 100pF | ±10% | CL31C101KBCNN□ | | | | | 8.2nF | ±2% | CL31C822GAFNN□ |
| | | 110pF | ±5% | CL31C111JBCNN□ | | | | | 8.2nF | ±5% | CL31C822JAFNN□ |
| | | 120pF | ±5% | CL31C121JBCNN□ | | | | | 10nF | ±2% | CL31C103GAFNN□ |
| | | 130pF | ±5% | CL31C131JBCNN□ | | | | | 10nF | ±5% | CL31C103JAFNN□ |
| 150pF | ±5% | CL31C151JBCNN□ | 50Vdc | 2.7nF | ±5% | CL31C272JBFNN□ | | | | | |
| 160pF | ±5% | CL31C161JBCNN□ | | 3.0nF | ±5% | CL31C302JBFNN□ | | | | | |
| 160pF | ±10% | CL31C161KBCNN□ | | 3.3nF | ±1% | CL31C332GBFNN□ | | | | | |
| 180pF | ±1% | CL31C181FBCNN□ | | 3.3nF | ±2% | CL31C332JBFNN□ | | | | | |
| 180pF | ±2% | CL31C181GBCNN□ | | 3.3nF | ±5% | CL31C332JBFNN□ | | | | | |
| 180pF | ±5% | CL31C181JBCNN□ | | 3.3nF | ±10% | CL31C332KBFNN□ | | | | | |

* □ mark means packaging code. If you want to learn the code or quantity in detail, please see p.148

In order to move to the page directly, please click the here†

Product Line Up (COG)

■ Size : 3.20 X 1.60mm (inch : 1206)

| Thickness Max. | Rated Voltage | Capacitance | Capacitance Tolerance | Part Number | |
|----------------|---------------|------------------|-----------------------|------------------|------------------|
| 1.40mm | 50Vdc | 3.6nF | ±5% | CL31C362JBFNNN □ | |
| | | 3.9nF | ±5% | CL31C392JBFNNN □ | |
| | | 4.7nF | ±1% | CL31C472JBFNNN □ | |
| | | 4.7nF | ±2% | CL31C472GBFNNN □ | |
| | | 4.7nF | ±5% | CL31C472JBFNNN □ | |
| 1.80mm | 16Vdc | 120nF | ±5% | CL31C124JOHNNN □ | |
| | | 25Vdc | 6.8nF | ±2% | CL31C682GAHNNN □ |
| | | | 8.2nF | ±5% | CL31C822JAHNNN □ |
| | | | 10nF | ±5% | CL31C103JAHNNN □ |
| | | | 39nF | ±5% | CL31C393JAHNNN □ |
| | | | 47nF | ±5% | CL31C473JAHNNN □ |
| | | | 56nF | ±5% | CL31C563JAHNNN □ |
| | | | 68nF | ±5% | CL31C683JAHNNN □ |
| | | | 82nF | ±5% | CL31C823JAHNNN □ |
| | | 100nF | ±5% | CL31C104JAHNNN □ | |
| | 50Vdc | 5.6nF | ±5% | CL31C562JBHNNN □ | |
| | | 6.8nF | ±5% | CL31C682JBHNNN □ | |
| | | 10nF | ±2% | CL31C103GBHNNN □ | |
| | | 15nF | ±5% | CL31C153JBHNNN □ | |
| | | 18nF | ±5% | CL31C183JBHNNN □ | |
| | | 22nF | ±5% | CL31C223JBHNNN □ | |
| | | 27nF | ±5% | CL31C273JBHNNN □ | |
| 33nF | ±5% | CL31C333JBHNNN □ | | | |
| 47nF | ±5% | CL31C473JBHNNN □ | | | |

■ Size : 3.20 X 2.50mm (inch : 1210)

| Thickness Max. | Rated Voltage | Capacitance | Capacitance Tolerance | Part Number |
|----------------|---------------|------------------|-----------------------|------------------|
| 1.45mm | 25Vdc | 10nF | ±5% | CL32C103JAFNNN □ |
| | 50Vdc | 1.0nF | ±5% | CL32C102JBFNNN □ |
| | | 1.2nF | ±5% | CL32C122JBFNNN □ |
| | | 1.5nF | ±5% | CL32C152JBFNNN □ |
| | | 1.8nF | ±5% | CL32C182JBFNNN □ |
| | | 2.7nF | ±5% | CL32C272JBFNNN □ |
| | | 3.9nF | ±5% | CL32C392JBFNNN □ |
| | | 4.7nF | ±5% | CL32C472JBFNNN □ |
| | | 5.6nF | ±5% | CL32C562JBFNNN □ |
| | | 6.8nF | ±5% | CL32C682JBFNNN □ |
| | | 8.2nF | ±1% | CL32C822JBFNNN □ |
| | 8.2nF | ±5% | CL32C822JBFNNN □ | |
| | 10nF | ±1% | CL32C103JBFNNN □ | |
| | 10nF | ±2% | CL32C103GBFNNN □ | |
| 10nF | ±5% | CL32C103JBFNNN □ | | |
| 1.80mm | 50Vdc | 11nF | ±5% | CL32C113JBHNNN □ |

※ □ mark means packaging code. If you want to learn the code or quantity in detail, please see p.148

In order to move to the page directly, please click the here†

Standard & High Capacitors

Product Line Up (X5R)

■ Size : 1.00 X 0.50mm (inch : 0402)

| Thickness Max. | Rated Voltage | Capacitance | Capacitance Tolerance | Part Number | Remark | Thickness Max. | Rated Voltage | Capacitance | Capacitance Tolerance | Part Number | Remark | |
|----------------|------------------|------------------|---|--------------------------|---|------------------|-----------------|---|---|---|---|---|
| 0.11mm | 6.3Vdc | 220nF | ±20% | CL05A224MQLHEC□ | Derating Ref. | 0.55mm | 16Vdc | 100nF | ±5% | CL05A104J05NINN□ | | |
| 0.22mm | 6.3Vdc | 470nF | ±20% | CL05A474MQXLNN□ | Derating Ref. | | | 100nF | ±10% | CL05A104K05NINN□ | | |
| | | 1.0uF | ±20% | CL05A105MQXLNN□ | Derating Ref. | | | 100nF | ±20% | CL05A104M05NINN□ | | |
| 0.33mm | 4.0Vdc | 2.2uF | ±20% | CL05A225MR3LRN□ | Derating Ref. | | | 220nF | ±10% | CL05A224K05NINN□ | | |
| | 6.3Vdc | 1.0uF | ±20% | CL05A105MQ3LNN□ | Derating Ref. | | | 470nF | ±10% | CL05A474K05NINN□ | Derating | |
| | | 2.2uF | ±20% | CL05A225MQ3LRN□ | Derating Ref. | | | 1.0uF | ±10% | CL05A105K05NINN□ | Derating | |
| 0.35mm | 6.3Vdc | 4.7uF | ±20% | CL05A475MQ3LUN□ | Derating Ref. | | | 4.2uF | ±10% | CL05A425K05LUN□ | Derating Ref. | |
| 0.55mm | 4.0Vdc | 100nF | ±20% | CL05A104MR5NINN□ | | | | 25Vdc | 100nF | ±10% | CL05A104KA5NINN□ | |
| | | 1.0uF | ±20% | CL05A105MR5NINN□ | Derating | | | | 220nF | ±10% | CL05A224KA5NINN□ | |
| | | 1.3uF | ±10% | CL05A135KR5NINN□ | Derating | | | | 330nF | ±10% | CL05A334KA5NINN□ | |
| | | 1.4uF | ±10% | CL05A145KR5NINN□ | Derating | 330nF | ±20% | | CL05A334MA5NINN□ | | | |
| | | 1.5uF | ±10% | CL05A155KR5NINN□ | Derating | 470nF | ±10% | | CL05A474KA5NINN□ | | | |
| | | 1.7uF | ±10% | CL05A175KR5NINN□ | Derating | 1.0uF | ±10% | | CL05A105KA5NINN□ | Derating | | |
| | | 1.8uF | ±10% | CL05A185KR5NINN□ | Derating | | | | | | | |
| | | 2.2uF | ±20% | CL05A225MR5NINN□ | Derating Ref. | | | | | | | |
| | | 3.3uF | ±20% | CL05A335MR5NINN□ | Derating Ref. | | | | | | | |
| | | 6.3Vdc | 100nF | ±10% | CL05A104KQ5NINN□ | | 0.57mm | | 4.0Vdc | 2.2uF | ±20% | CL05A225MR5NSN□ |
| | | | | ±20% | CL05A104MQ5NINN□ | | | 6.3Vdc | 2.2uF | ±10% | CL05A225KQ5NSN□ | Ref. |
| | | | | 120nF | ±10% | CL05A124KQ5NINN□ | | | 10Vdc | 2.2uF | ±10% | CL05A225KQ5NSN□ |
| | 150nF | | | ±10% | CL05A154KQ5NINN□ | | | 2.2uF | ±20% | CL05A225MQ5NSN□ | Ref. | |
| | 220nF | | | ±5% | CL05A224JQ5NINN□ | | 0.60mm | 4.0Vdc | 4.7uF | ±20% | CL05A475MR5NQN□ | Derating Ref. |
| | 220nF | | | ±10% | CL05A224KQ5NINN□ | | | 6.3Vdc | 4.7uF | ±20% | CL05A475MQ5NQN□ | Derating Ref. |
| | 220nF | | | ±20% | CL05A224MQ5NINN□ | | | 16Vdc | 2.2uF | ±10% | CL05A225K05NQN□ | Derating Ref. |
| | 330nF | | | ±10% | CL05A334KQ5NINN□ | | | | 2.2uF | ±20% | CL05A225M05NQN□ | Derating Ref. |
| | 330nF | | | ±20% | CL05A334MQ5NINN□ | | 25Vdc | 1uF | ±10% | CL05A105KA5NQN□ | Derating | |
| | 470nF | | | ±10% | CL05A474KQ5NINN□ | | | 1uF | ±20% | CL05A105MA5NQN□ | Derating | |
| | 680nF | ±10% | CL05A684KQ5NINN□ | | 0.65mm | 4.0Vdc | 10uF | ±20% | CL05A106MR5NRR□ | Derating Ref. | | |
| | 1.0uF | ±5% | CL05A105JQ5NINN□ | Derating | | 6.3Vdc | 4.7uF | ±10% | CL05A475KQ5NRR□ | Derating Ref. | | |
| | 1.0uF | ±10% | CL05A105KQ5NINN□ | Derating | | | | 4.7uF | ±20% | CL05A475MQ5NRR□ | Derating Ref. | |
| 1.0uF | ±20% | CL05A105MQ5NINN□ | Derating | | | 10uF | ±20% | CL05A106MQ5NRR□ | Derating Ref. | | | |
| 2.2uF | ±10% | CL05A225KQ5NINN□ | Derating Ref. | 10Vdc | | 13uF | ±20% | CL05A136MQ5NRR□ | Derating Ref. | | | |
| 2.2uF | ±20% | CL05A225MQ5NINN□ | Derating Ref. | | | | 4.7uF | ±10% | CL05A475KP5NRR□ | Derating Ref. | | |
| 2.2uF | ±20% | CL05A225MQ5NINN□ | Derating Ref. | | | 4.7uF | ±20% | CL05A475MP5NRR□ | Derating Ref. | | | |
| 10Vdc | 10nF | ±10% | CL05A103KP5NINN□ | | | | 10uF | ±20% | CL05A106MP5NRR□ | Derating Ref. | | |
| | | ±10% | CL05A473KP5NINN□ | | 35Vdc | 1uF | ±10% | CL05A105KL5NRR□ | Derating | | | |
| | | ±20% | CL05A473MP5NINN□ | | | 0.70mm | 4.0Vdc | 2.2uF | ±20% | CL05A225MR5NUN□ | Derating | |
| | | ±10% | CL05A683KP5NINN□ | | | | 10uF | ±20% | CL05A106MR5NUN□ | Derating Ref. | | |
| | | ±10% | CL05A823KP5NINN□ | | 6.3Vdc | | 10uF | ±20% | CL05A106MQ5NUN□ | Derating Ref. | | |
| | | ±10% | CL05A104KP5NINN□ | | | | | 22uF | ±20% | CL05A226MQ5QUN□ | Derating | |
| | | ±10% | CL05A104MP5NINN□ | | 10Vdc | | 10uF | ±20% | CL05A106MP5NUN□ | Derating Ref. | | |
| | | ±10% | CL05A154KP5NINN□ | | 16Vdc | | 4.7uF | ±20% | CL05A475M05NUN□ | Derating Ref. | | |
| | | ±10% | CL05A224KP5NINN□ | | | | 25Vdc | 2.2uF | ±10% | CL05A225KA5NUN□ | Derating Ref. | |
| | | ±10% | CL05A224MP5NINN□ | | | | | 2.2uF | ±20% | CL05A225MA5NUN□ | Derating Ref. | |
| | | ±10% | CL05A334KP5NINN□ | | 0.75mm | 6.3Vdc | 22uF | ±20% | CL05A226MQ5N6J□ | Derating | | |
| | | ±20% | CL05A334MP5NINN□ | | 0.80mm | 6.3Vdc | 22uF | ±20% | CL05A226MQ6NUN□ | Derating | | |
| | | ±10% | CL05A474KP5NINN□ | | | | | 10Vdc | 10uF | ±20% | CL05A106MP6NUN□ | Derating Ref. |
| | | ±5% | CL05A105JP5NINN□ | | 0.85mm | 6.3Vdc | 22uF | ±20% | CL05A226MQ6N6J□ | Derating | | |
| ±10% | CL05A105KP5NINN□ | | 0.90mm | 4.0Vdc | 22uF | ±20% | CL05A226MR5NZN□ | Derating Ref. | | | | |
| ±10% | CL05A105MP5NINN□ | | | | | | | | | | | |
| ±10% | CL05A225KP5NINN□ | | | | | | | | | | | |
| ±20% | CL05A225MP5NINN□ | | | | | | | | | | | |
| ±10% | CL05A472K05NINN□ | | | | | | | | | | | |
| 16Vdc | 4.7nF | ±10% | CL05A472K05NINN□ | | | | | | | | | |
| | | ±10% | CL05A223K05NINN□ | | | | | | | | | |
| | | ±10% | CL05A473K05NINN□ | | | | | | | | | |
| | | ±20% | CL05A473M05NINN□ | | | | | | | | | |

※ □ mark means packaging code. If you want to learn the code or quantity in detail, please see p.148

In order to move to the page directly, please click the here!

Standard & High Capacitors

Product Line Up (X5R)

■ Size : 2.00 X 1.25mm (inch : 0805)

| Thickness Max. | Rated Voltage | Capacitance | Capacitance Tolerance | Part Number | Remark | |
|----------------|---------------|-------------|-----------------------|-----------------|-----------------|----------|
| 0.70mm | 10Vdc | 2.2uF | ±10% | CL21A225KP6LNN□ | | |
| | 16Vdc | 1.0uF | ±20% | CL21A105M06LNN□ | | |
| | | 2.2uF | ±10% | CL21A225K06LNN□ | | |
| 0.80mm | 6.3Vdc | 10uF | ±10% | CL21A106KQ7LQN□ | | |
| | | 47uF | ±20% | CL21A476MQ7FRN□ | Derating | |
| | | 47uF | ±20% | CL21A476MQ7LRN□ | Derating | |
| | 10Vdc | 10uF | ±10% | CL21A106KP7LQN□ | Derating | |
| 0.90mm | 6.3Vdc | 47uF | ±20% | CL21A476MQ8LRN□ | Derating | |
| 0.95mm | 4.0Vdc | 22uF | ±20% | CL21A226MRCLRN□ | Derating | |
| | | 47uF | ±20% | CL21A476MRCLRP□ | Derating | |
| | | | | | | |
| | 6.3Vdc | 1.0uF | ±10% | CL21A105KQCLNN□ | | |
| | | 1.0uF | ±10% | CL21A105KQCNN□ | | |
| | | 4.7uF | ±10% | CL21A475KQCLNN□ | | |
| | | 4.7uF | ±20% | CL21A475MQCLNN□ | | |
| | | 10uF | ±10% | CL21A106KQCLNN□ | | |
| | | 10uF | ±10% | CL21A106KQCLR□ | | |
| | | 10uF | ±20% | CL21A106MQCLNN□ | | |
| | | 22uF | ±10% | CL21A226KQCLR□ | Derating | |
| | | 22uF | ±20% | CL21A226MQCLR□ | Derating | |
| | | 22uF | ±20% | CL21A226MQCLR□ | Derating | |
| | | 47uF | ±20% | CL21A476MQCLR□ | Derating | |
| | | 10Vdc | 2.2uF | ±10% | CL21A225KPCLNN□ | |
| | | | 4.7uF | ±10% | CL21A475KPCLNN□ | |
| | | | 4.7uF | ±20% | CL21A475MPCLNN□ | |
| | | | 10uF | ±10% | CL21A106KPCLNN□ | Derating |
| | 10uF | | ±10% | CL21A106KPCLQ□ | Derating | |
| | 10uF | | ±20% | CL21A106MPCLNN□ | Derating | |
| | 10uF | | ±20% | CL21A106MPCLQ□ | Derating | |
| | 22uF | | ±10% | CL21A226KPCLR□ | Derating | |
| | 22uF | | ±20% | CL21A226MPCLR□ | Derating | |
| | 22uF | | +80/-20% | CL21A226ZPCLR□ | Derating | |
| | 16Vdc | | 2.2uF | ±10% | CL21A225KOCLNN□ | |
| | | | 4.7uF | ±10% | CL21A475KOCLNN□ | |
| | | 4.7uF | ±10% | CL21A475KOCLR□ | | |
| | | 10uF | ±10% | CL21A106KOCLNN□ | Derating | |
| | | 10uF | ±10% | CL21A106KOCLR□ | Derating | |
| | | 10uF | ±10% | CL21A106KOCLSN□ | Derating | |
| | | 22uF | ±20% | CL21A226MOCLR□ | Derating | |
| | | 25Vdc | 1.0uF | ±10% | CL21A105KACLNN□ | |
| | | | 1.0uF | ±10% | CL21A105KACNN□ | |
| 2.2uF | | | ±10% | CL21A225KACLNN□ | Derating | |
| 4.7uF | | | ±10% | CL21A475KACLRN□ | Derating | |
| 10uF | | | ±10% | CL21A106KACLRN□ | Derating | |
| 10uF | | | ±10% | CL21A475KLCLQ□ | Derating | |
| 35Vdc | | 4.7uF | ±10% | CL21A475KLCLQ□ | Derating | |
| 50Vdc | | 1.0uF | ±10% | CL21A105KBCFNN□ | | |
| | 1.0uF | ±10% | CL21A105KBCLNN□ | | | |
| 1.00mm | 6.3Vdc | 33uF | ±20% | CL21A336MQ9LRN□ | Derating | |
| | | 47uF | ±20% | CL21A476MQ9LRN□ | Derating | |
| | 50Vdc | 2.2uF | ±10% | CL21A225KB9LNN□ | Derating | |
| 1.20mm | 6.3Vdc | 33uF | ±20% | CL21A336MQELRN□ | Derating | |
| | 10Vdc | 2.2uF | ±10% | CL21A225KPENNN□ | | |
| 1.25mm | 6.3Vdc | 47uF | ±20% | CL21A476MQMNRN□ | Derating | |
| 1.35mm | 4.0Vdc | 10uF | ±20% | CL21A106MRFNN□ | | |
| | 6.3Vdc | 2.2uF | ±10% | CL21A225KQFNN□ | | |

| Thickness Max. | Rated Voltage | Capacitance | Capacitance Tolerance | Part Number | Remark | | |
|----------------|---------------|-------------|-----------------------|----------------|----------------|----------------|----------|
| 1.35mm | 6.3Vdc | 2.2uF | ±20% | CL21A225MQFNN□ | | | |
| | | 3.3uF | ±10% | CL21A335KQFNN□ | | | |
| | | 3.3uF | ±20% | CL21A335MQFNN□ | | | |
| | | 4.7uF | ±10% | CL21A475KQFNN□ | | | |
| | | 4.7uF | ±20% | CL21A475MQFNN□ | | | |
| | | 6.8uF | ±10% | CL21A685KQFNN□ | | | |
| | | 10uF | ±10% | CL21A106KQFNN□ | | | |
| | | 10uF | ±20% | CL21A106MQFNN□ | | | |
| | | 22uF | ±20% | CL21A226MQFNN□ | | | |
| | | 10Vdc | 1.0uF | ±10% | CL21A105KPFNN□ | | |
| | | | 2.2uF | ±10% | CL21A225KPFNN□ | | |
| | | | 2.2uF | ±20% | CL21A225MPFNN□ | | |
| | | | 3.3uF | ±10% | CL21A335KPFNN□ | | |
| | | | 4.7uF | ±10% | CL21A475KPFNN□ | | |
| | | | 4.7uF | ±20% | CL21A475MPFNN□ | | |
| | | | 10uF | ±10% | CL21A106KPFNN□ | | |
| | | | 10uF | ±20% | CL21A106MPFNN□ | | |
| | | | 16Vdc | 680nF | ±10% | CL21A684KOFNN□ | |
| | 1.0uF | | | ±10% | CL21A105KOFNN□ | | |
| | 2.2uF | | | ±10% | CL21A225KOFNN□ | | |
| | 2.2uF | | | ±20% | CL21A225MOFNN□ | | |
| | 3.3uF | | | ±10% | CL21A335KOFNN□ | | |
| | 4.7uF | | | ±10% | CL21A475KOFNN□ | | |
| | 10uF | | | ±10% | CL21A106KOFNN□ | Derating | |
| | 25Vdc | | | 470nF | ±20% | CL21A474MAFNN□ | |
| | | | | 1.0uF | ±10% | CL21A105KAFNN□ | |
| | | | | 2.2uF | ±10% | CL21A225KAFNN□ | |
| | | 50Vdc | | 1.0uF | ±10% | CL21A105KBFNN□ | Derating |
| | | | | 2.2uF | ±10% | CL21A225KBFNN□ | Derating |
| | | | | | | | |
| | 1.40mm | 4.0Vdc | | 22uF | ±20% | CL21A226MRQNN□ | |
| | | | | 47uF | ±20% | CL21A476MRQNN□ | Derating |
| | | | | | | | |
| | | 6.3Vdc | | 4.7uF | ±10% | CL21A475KQNN□ | Derating |
| | | | | 10uF | ±10% | CL21A106KQNN□ | Derating |
| | | | 22uF | ±10% | CL21A226KQNN□ | | |
| | | | 22uF | ±20% | CL21A226MQNN□ | | |
| | | 10Vdc | 22uF | ±20% | CL21A226MPQNN□ | | |
| | | | 16Vdc | 10uF | ±10% | CL21A106KQNN□ | Derating |
| | | | | 22uF | ±10% | CL21A226KQNN□ | Derating |
| | | | | 22uF | ±20% | CL21A226MQNN□ | Derating |
| | | 25Vdc | 4.7uF | ±10% | CL21A475KAQNN□ | Derating | |
| | | | 4.7uF | ±20% | CL21A475MAQNN□ | Derating | |
| | | | 22uF | ±20% | CL21A226MAQNN□ | Derating | |
| | | | 50Vdc | 2.2uF | ±10% | CL21A225KBQNN□ | Derating |
| | | | | 4.7uF | ±10% | CL21A475KBQNN□ | Derating |
| | | | | | | | |
| | | 1.45mm | 4.0Vdc | 47uF | ±20% | CL21A476MRYNN□ | |
| | | | | | | | |
| | 6.3Vdc | | 47uF | ±10% | CL21A476KQYNN□ | Derating | |
| | | | 47uF | ±20% | CL21A476MQYNN□ | Derating | |
| | 25Vdc | | 10uF | ±10% | CL21A106KAYNN□ | Derating | |

※ □ mark means packaging code. If you want to learn the code or quantity in detail, please see p.148

In order to move to the page directly, please click the here↓

Product Line Up (X5R)

■ Size : 3.20 X 1.60mm (inch : 1206)

| Thickness Max. | Rated Voltage | Capacitance | Capacitance Tolerance | Part Number | Remark |
|----------------|---------------|-------------|-----------------------|------------------|----------|
| 0.95mm | 6.3Vdc | 10uF | ±20% | CL31A106MQCLNN □ | |
| | | 22uF | ±10% | CL31A226KQCLNN □ | Derating |
| | | 22uF | ±20% | CL31A226MQCLNN □ | Derating |
| | 10Vdc | 10uF | ±10% | CL31A106KPCLNN □ | |
| | | 10uF | ±20% | CL31A106MPCLNN □ | |
| | 16Vdc | 2.2uF | ±10% | CL31A225KOCLNN □ | |
| | | 4.7uF | ±10% | CL31A475KOCLNN □ | |
| | | 4.7uF | ±20% | CL31A475MOCLNN □ | |
| | | 10uF | ±10% | CL31A106KOCLNN □ | |
| | | 22uF | ±10% | CL31A226KOCLNN □ | Derating |
| | | 22uF | ±20% | CL31A226MOCLNN □ | Derating |
| | 25Vdc | 4.7uF | ±10% | CL31A475KACLNN □ | |
| 10uF | | ±10% | CL31A106KACLNN □ | Derating | |
| 10uF | | ±20% | CL31A106MBHNNN □ | | |
| 1.00mm | 35Vdc | 4.7uF | ±10% | CL31A475KL9LNN □ | Derating |
| | | 1.0uF | ±10% | CL31A105KB9LNN □ | |
| | 50Vdc | 2.2uF | ±10% | CL31A225KB9LNN □ | |
| | | 4.7uF | ±10% | CL31A475KB9LNN □ | Derating |
| | 100Vdc | 2.2uF | ±10% | CL31A225KC9LNN □ | Derating |
| 1.20mm | 16Vdc | 4.7uF | ±10% | CL31A475KOELNN □ | |
| 1.25mm | 10Vdc | 10uF | ±10% | CL31A106KPPLNN □ | |
| | | 10uF | ±20% | CL31A106MPPLNN □ | |
| | 16Vdc | 4.7uF | ±10% | CL31A475KOPLNN □ | |
| | | 4.7uF | ±20% | CL31A475MOPLNN □ | |
| | 25Vdc | 1.0uF | ±10% | CL31A105KAPLNN □ | |
| | | 2.2uF | ±10% | CL31A225KAPLNN □ | |
| | | 4.7uF | ±10% | CL31A475KAPLNN □ | |
| 1.70mm | 50Vdc | 2.2uF | ±10% | CL31A225KBTLNN □ | |
| 1.80mm | 6.3Vdc | 3.3uF | ±10% | CL31A335KQHNNN □ | |
| | | 10uF | ±10% | CL31A106KQHNNN □ | |
| | | 10uF | ±20% | CL31A106MQHNNN □ | |
| | | 15uF | ±10% | CL31A156KQHNNN □ | |
| | | 15uF | ±20% | CL31A156MQHNNN □ | |
| | | 22uF | ±10% | CL31A226KQHNNN □ | |
| | | 22uF | ±20% | CL31A226MQHNNN □ | |
| | | 33uF | ±20% | CL31A336MQHNNN □ | |
| | | 47uF | ±10% | CL31A476KQHNNN □ | |
| | | 47uF | ±20% | CL31A476MQHNNN □ | |
| | 100uF | ±20% | CL31A107MQHNNN □ | Derating | |
| | 10Vdc | 3.3uF | ±10% | CL31A335KPHNNN □ | |
| | | 4.7uF | ±10% | CL31A475KPHNNN □ | |
| | | 10uF | ±10% | CL31A106KPHNNN □ | |
| | | 10uF | ±20% | CL31A106MPHNNN □ | |
| | | 22uF | ±10% | CL31A226KPHNNN □ | |
| | | 22uF | ±20% | CL31A226MPHNNN □ | |
| | | 47uF | ±20% | CL31A476MPHNNN □ | Derating |
| | | 100uF | ±20% | CL31A107MPHNNN □ | Derating |
| | 16Vdc | 2.2uF | ±10% | CL31A225KOHNNN □ | |
| | | 3.3uF | ±10% | CL31A335KOHNNN □ | |
| | | 3.3uF | ±20% | CL31A335MOHNNN □ | |
| 4.7uF | | ±10% | CL31A475KOHNNN □ | | |
| 4.7uF | | ±20% | CL31A475MOHNNN □ | | |
| 10uF | | ±10% | CL31A106KOHNNN □ | | |
| 10uF | | ±20% | CL31A106MOHNNN □ | | |
| 22uF | | ±10% | CL31A226KOHNNN □ | Derating | |
| 22uF | | ±20% | CL31A226MOHNNN □ | Derating | |
| 47uF | | ±10% | CL31A476KOHNNN □ | | |

※ □ mark means packaging code. If you want to learn the code or quantity in detail, please see p.148

In order to move to the page directly, please click the here†

| Thickness Max. | Rated Voltage | Capacitance | Capacitance Tolerance | Part Number | Remark |
|----------------|---------------|-------------|-----------------------|------------------|----------|
| 1.80mm | 16Vdc | 22uF | ±20% | CL31A226MOHNNN □ | Derating |
| | | 22uF | ±10% | CL31A225KAHNNN □ | |
| | 25Vdc | 2.2uF | ±10% | CL31A225KAHNNN □ | |
| | | 3.3uF | ±10% | CL31A335KAHNNN □ | |
| | | 4.7uF | ±10% | CL31A475KAHNNN □ | |
| | | 10uF | ±10% | CL31A106KAHNNN □ | |
| | | 10uF | ±20% | CL31A106MAHNNN □ | |
| | | 22uF | ±10% | CL31A226KAHNNN □ | Derating |
| | 22uF | ±20% | CL31A226MAHNNN □ | Derating | |
| | 35Vdc | 2.2uF | ±10% | CL31A225KLHNNN □ | |
| | | 2.2uF | ±10% | CL31A225KBHNNN □ | |
| | 50Vdc | 4.7uF | ±10% | CL31A475KBHNNN □ | |
| | | 10uF | ±10% | CL31A106KBHNNN □ | |
| 10uF | | ±20% | CL31A106MBHNNN □ | | |

■ Size : 3.20 X 2.50mm (inch : 1210)

| Thickness Max. | Rated Voltage | Capacitance | Capacitance Tolerance | Part Number | Remark | |
|----------------|---------------|-------------|-----------------------|------------------|------------------|--|
| 0.95mm | 16Vdc | 10uF | ±10% | CL32A106KOCLNN □ | | |
| | | 22uF | ±20% | CL32A226MOCLNN □ | Derating | |
| 1.00mm | 25Vdc | 10uF | ±10% | CL32A106KA9LNN □ | | |
| 1.25mm | 16Vdc | 10uF | ±10% | CL32A106KOMLNN □ | | |
| | | 22uF | ±10% | CL32A226KPSLNN □ | | |
| 1.50mm | 10Vdc | 22uF | ±10% | CL32A226MPSLNN □ | | |
| | | 22uF | ±20% | CL32A226MPSLNN □ | | |
| | 25Vdc | 6.8uF | ±10% | CL32A685KASLNN □ | | |
| | | 22uF | ±10% | CL32A226KOTFNN □ | Derating | |
| 1.70mm | 16Vdc | 22uF | ±20% | CL32A226MOTLNN □ | Derating | |
| | | 10uF | ±10% | CL32A106KATLNN □ | | |
| | 25Vdc | 10uF | ±20% | CL32A106MATLNN □ | | |
| | | 10uF | ±10% | CL32A106MATLNN □ | | |
| 2.00mm | 25Vdc | 4.7uF | ±10% | CL32A475KAULNN □ | | |
| | | 10uF | ±10% | CL32A106KAULNN □ | | |
| | 35Vdc | 4.7uF | ±10% | CL32A475KLULNN □ | | |
| | | 10uF | ±10% | CL32A106KLULNN □ | | |
| | 10Vdc | 10uF | ±10% | CL32A106MLULNN □ | | |
| | | 10uF | ±20% | CL32A106MLULNN □ | | |
| | 2.20mm | 10Vdc | 10uF | ±10% | CL32A106KPINNN □ | |
| | | | 10uF | ±10% | CL32A106KOILNN □ | |
| 2.20mm | 16Vdc | 2.2uF | ±20% | CL32A225MAINNN □ | | |
| | | 4.7uF | ±10% | CL32A475KAINNN □ | | |
| | 25Vdc | 10uF | ±10% | CL32A106KAILNN □ | | |
| | | 10uF | ±20% | CL32A106MAILNN □ | | |
| 2.70mm | 6.3Vdc | 22uF | ±10% | CL32A226KQJNNN □ | | |
| | | 22uF | ±20% | CL32A226MQJNNN □ | | |
| | | 33uF | ±20% | CL32A336MQJNNN □ | | |
| | | 47uF | ±10% | CL32A476KQJNNN □ | | |
| | | 47uF | ±20% | CL32A476MQJNNN □ | | |
| | | 47uF | ±20% | CL32A476KQJNNN □ | | |
| | 10Vdc | 22uF | ±10% | CL32A226KPJNNN □ | | |
| | | 22uF | ±20% | CL32A226MPJNNN □ | Derating | |
| | | 47uF | ±10% | CL32A476KPJNNN □ | Derating | |
| | | 47uF | ±20% | CL32A476MPJNNN □ | | |
| | | 16Vdc | 10uF | ±10% | CL32A106KOJNNN □ | |
| | | | 10uF | ±20% | CL32A106MOJNNN □ | |
| 22uF | ±10% | | CL32A226KOJNNN □ | | | |
| 22uF | ±20% | | CL32A226MOJNNN □ | | | |
| | | 47uF | ±10% | CL32A476KOJNNN □ | | |

Standard & High Capacitors

Product Line Up (X5R)

■ Size : 3.20 X 2.50mm (inch : 1210)

| Thickness Max. | Rated Voltage | Capacitance | Capacitance Tolerance | Part Number | Remark | |
|----------------|---------------|-------------|-----------------------|-----------------|-----------------|--|
| 2.70mm | 16Vdc | 47uF | ±20% | CL32A476MOJNNN□ | | |
| | | 25Vdc | 10uF | ±10% | CL32A106KAJNNN□ | |
| | | | 10uF | ±20% | CL32A106MAJNNN□ | |
| | | | 22uF | ±10% | CL32A226KAJNNN□ | |
| | 35Vdc | 22uF | ±20% | CL32A226MAJNNN□ | | |
| | | 50Vdc | 10uF | ±10% | CL32A106KJNNN□ | |
| | | | 10uF | ±10% | CL32A106KBJNNN□ | |
| | | | 10uF | ±20% | CL32A106MBJNNN□ | |
| 2.80mm | 6.3Vdc | 100uF | ±20% | CL32A107MQVNNN□ | Derating | |
| | | 150uF | ±20% | CL32A157MQVNNN□ | Derating | |
| | | 220uF | ±20% | CL32A227MQVNNN□ | Derating | |
| | 10Vdc | 100uF | ±20% | CL32A107MPVNNN□ | Derating | |

■ Size : 4.50 X 3.20mm (inch : 1812)

| Thickness Max. | Rated Voltage | Capacitance | Capacitance Tolerance | Part Number | Remark |
|----------------|---------------|-------------|-----------------------|-----------------|--------|
| 2.70mm | 6.3Vdc | 33uF | ±20% | CL43A336MQJNNN□ | |
| | | 47uF | ±10% | CL43A476KQJNNN□ | |
| | | 47uF | ±20% | CL43A476MQJNNN□ | |
| 3.50mm | 6.3Vdc | 100uF | ±20% | CL43A107MLNNN□ | |

■ Size : 5.70 X 5.00mm (inch : 2220)

| Thickness Max. | Rated Voltage | Capacitance | Capacitance Tolerance | Part Number | Remark |
|----------------|---------------|-------------|-----------------------|-----------------|-----------------|
| 2.70mm | 6.3Vdc | 47uF | ±20% | CL55A476MQJNNN□ | |
| | | 68uF | ±20% | CL55A686MQJNNN□ | |
| | | 100uF | ±20% | CL55A107MQJNNN□ | |
| | | 10Vdc | 47uF | ±10% | CL55A476KPJNNN□ |
| | | | | | |

※ □ mark means packaging code. If you want to learn the code or quantity in detail, please see p.148

Product Line Up (X6S)

■ Size : 1.00 X 0.50mm (inch : 0402)

| Thickness Max. | Rated Voltage | Capacitance | Capacitance Tolerance | Part Number | Remark |
|----------------|---------------|-------------|-----------------------|------------------|------------------|
| 0.33mm | 6.3Vdc | 1.0uF | ±20% | CL05X105MQ3LNN □ | Derating |
| 0.55mm | 4.0Vdc | 2.2nF | ±20% | CL05X222MR5NNN □ | |
| | | 15nF | ±20% | CL05X153MR5NNN □ | |
| | | 47nF | ±20% | CL05X473MR5NNN □ | |
| | | 220nF | ±20% | CL05X224MR5NNN □ | |
| | | 2.2uF | ±20% | CL05X225MR5NNN □ | Derating |
| | 6.3Vdc | 680nF | ±5% | CL05X684JQ5NNN □ | |
| | | | 1.0uF | ±10% | CL05X105KQ5NNN □ |
| | 10Vdc | 1.0uF | ±10% | CL05X105KP5NNN □ | Derating |
| 0.57mm | 2.5Vdc | 2.2uF | ±20% | CL05X225MS5NSN □ | Derating Ref. |
| 0.60mm | 25Vdc | 1.0uF | ±10% | CL05X105KA5NQN □ | Derating |
| 0.70mm | 4.0Vdc | 4.7uF | ±20% | CL05X475MR5NUN □ | Derating Ref. |
| | | 10uF | ±20% | CL05X106MR5NUN □ | Derating Ref. |

■ Size : 1.60 X 0.80mm (inch : 0603)

| Thickness Max. | Rated Voltage | Capacitance | Capacitance Tolerance | Part Number | Remark |
|----------------|---------------|-------------|-----------------------|------------------|---------------|
| 0.90mm | 4.0Vdc | 1.0uF | ±20% | CL10X105MR8NNN □ | |
| | | 4.7uF | ±20% | CL10X475MR8NNN □ | Derating |
| | | 10uF | ±10% | CL10X106KR8NNN □ | Derating Ref. |
| | | 10uF | ±20% | CL10X106MR8NNN □ | Derating Ref. |
| | 6.3Vdc | 1.0uF | ±20% | CL10X105MQ8NNN □ | |
| | | 2.2uF | ±10% | CL10X225KQ8NNN □ | |
| | | 2.2uF | ±20% | CL10X225MQ8NNN □ | |
| | | 4.7uF | ±10% | CL10X475KQ8NNN □ | Derating |
| | | 4.7uF | ±20% | CL10X475MQ8NNN □ | Derating |
| | | 10uF | ±10% | CL10X106KQ8NNN □ | Derating Ref. |
| | | 10uF | ±20% | CL10X106MQ8NNN □ | Derating Ref. |
| 10Vdc | 2.2uF | ±10% | CL10X225KP8NNN □ | | |
| 25Vdc | 1.0uF | ±10% | CL10X105KA8NNN □ | | |
| 0.95mm | 25Vdc | 4.7uF | ±10% | CL10X475KA8NQN □ | Derating |
| 1.00mm | 10Vdc | 10uF | ±20% | CL10X106MP8NRR □ | Derating Ref. |
| | 16Vdc | 4.7uF | ±10% | CL10X475KO8NRR □ | Derating |
| | | 10uF | ±20% | CL10X106MO8NRR □ | Derating Ref. |

■ Size : 2.00 X 1.25mm (inch : 0805)

| Thickness Max. | Rated Voltage | Capacitance | Capacitance Tolerance | Part Number | Remark |
|----------------|---------------|-------------|-----------------------|------------------|------------------|
| 0.95mm | 2.5Vdc | 22uF | ±20% | CL21X226MSCLRN □ | Derating |
| | 4.0Vdc | 10uF | ±10% | CL21X106KRCLRN □ | Derating |
| | 10Vdc | 10uF | ±10% | CL21X106KPCLRN □ | Derating |
| 1.35mm | 4.0Vdc | 4.7uF | ±10% | CL21X475KRFNNN □ | |
| | | 10uF | ±10% | CL21X106KRFNNN □ | |
| | | 10uF | ±20% | CL21X106MRFNNN □ | |
| | 16Vdc | 2.2uF | ±10% | CL21X225KOFNNN □ | |
| 1.40mm | 4.0Vdc | 22uF | ±20% | CL21X226MRQNNN □ | Derating |
| | 6.3Vdc | 10uF | ±10% | CL21X106KQNNN □ | Derating |
| | | 22uF | ±20% | CL21X226MQNNN □ | Derating |
| | 16Vdc | 10uF | ±10% | CL21X106KOQNNN □ | |
| | | 10uF | ±20% | CL21X106MOQNNN □ | |
| | | 4.7uF | ±10% | CL21X475KAQNNN □ | Derating |
| | | | 4.7uF | ±20% | CL21X475MAQNNN □ |
| 1.45mm | 2.5Vdc | 47uF | ±20% | CL21X476MSYNNN □ | Derating |
| | 4.0Vdc | 47uF | ±20% | CL21X476MRYNNN □ | Derating |
| | 10Vdc | 10uF | ±10% | CL21X106KPYNNN □ | |
| | 25Vdc | 10uF | ±10% | CL21X106KAYNNN □ | Derating |
| | | 10uF | ±20% | CL21X106MAYNNN □ | Derating |

■ Size : 3.20 X 1.60mm (inch : 1206)

| Thickness Max. | Rated Voltage | Capacitance | Capacitance Tolerance | Part Number | Remark |
|----------------|---------------|-------------|-----------------------|------------------|----------|
| 0.95mm | 25Vdc | 4.7uF | ±10% | CL31X475KACLNN □ | |
| 1.80mm | 4.0Vdc | 10uF | ±10% | CL31X106KRHNNN □ | |
| | | 10uF | ±20% | CL31X106MRHNNN □ | |
| | | 22uF | ±10% | CL31X226KRHNNN □ | |
| | | 22uF | ±20% | CL31X226MRHNNN □ | |
| | | 47uF | ±20% | CL31X476MRHNNN □ | Derating |
| | 6.3Vdc | 10uF | ±10% | CL31X106QHNNN □ | |
| | | 10uF | ±20% | CL31X106MQHNNN □ | |
| | | 22uF | ±10% | CL31X226QHNNN □ | |
| | | 47uF | ±10% | CL31X476QHNNN □ | Derating |
| | | 47uF | ±20% | CL31X476MQHNNN □ | Derating |
| 16Vdc | 22uF | ±10% | CL31X226KOHNNN □ | Derating | |
| 25Vdc | 10uF | ±10% | CL31X106KAHNNN □ | | |

■ Size : 3.20 X 2.50mm (inch : 1210)

| Thickness Max. | Rated Voltage | Capacitance | Capacitance Tolerance | Part Number | Remark |
|----------------|---------------|-------------|-----------------------|------------------|--------|
| 2.70mm | 6.3Vdc | 22uF | ±20% | CL32X226MJNNN □ | |
| | 10Vdc | 47uF | ±10% | CL32X476KPNJNN □ | |
| | 16Vdc | 10uF | ±10% | CL32X106KQJNNN □ | |
| 2.80mm | 4.0Vdc | 100uF | ±10% | CL32X107KRVNNN □ | |
| | 6.3Vdc | 100uF | ±20% | CL32X107MQVNNN □ | |

※ □ mark means packaging code. If you want to learn the code or quantity in detail, please see p.148

In order to move to the page directly, please click the here↑