



Chipsmall Limited consists of a professional team with an average of over 10 year of expertise in the distribution of electronic components. Based in Hongkong, we have already established firm and mutual-benefit business relationships with customers from,Europe,America and south Asia,supplying obsolete and hard-to-find components to meet their specific needs.

With the principle of “Quality Parts,Customers Priority,Honest Operation,and Considerate Service”,our business mainly focus on the distribution of electronic components. Line cards we deal with include Microchip,ALPS,ROHM,Xilinx,Pulse,ON,Everlight and Freescale. Main products comprise IC,Modules,Potentiometer,IC Socket,Relay,Connector.Our parts cover such applications as commercial,industrial, and automotives areas.

We are looking forward to setting up business relationship with you and hope to provide you with the best service and solution. Let us make a better world for our industry!



## Contact us

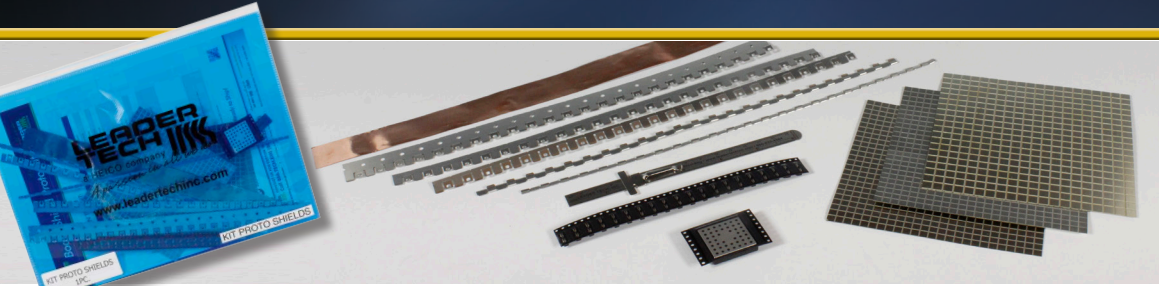
Tel: +86-755-8981 8866 Fax: +86-755-8427 6832

Email & Skype: info@chipsmall.com Web: www.chipsmall.com

Address: A1208, Overseas Decoration Building, #122 Zhenhua RD., Futian, Shenzhen, China





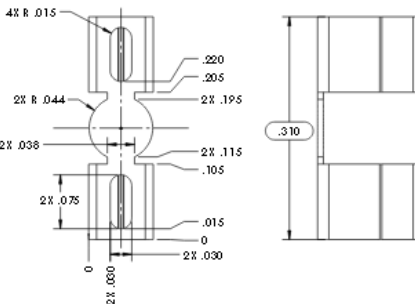
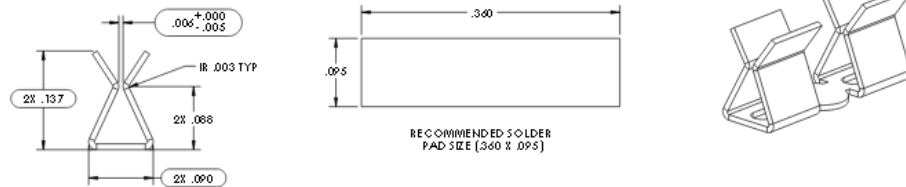


## Board Shield Prototype Kit

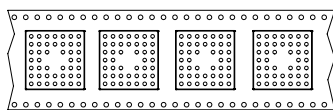
If you are looking for a faster, easier and less expensive way to create a custom prototype of a high-performance Leader Tech circuit board shield, you need to get your hands on our newest Board Shield Prototype Kit or BSP. This ultimate do-it-yourself kit contains everything that you need to quickly create and assemble a one or two piece, production-quality circuit board shield without requiring special tools or experience.

We provide you with everything you will need to create your prototype shield. The BSP Kit includes a large selection of Leader Tech CBS fences, Tech Clips and SMS covers as well as customizable cover materials that you can cut and form to fit the exact shape and size of your board component. The instruction sheet even features assembly photos and step-by-step directions on how to make the perfect prototype board shield in just minutes.

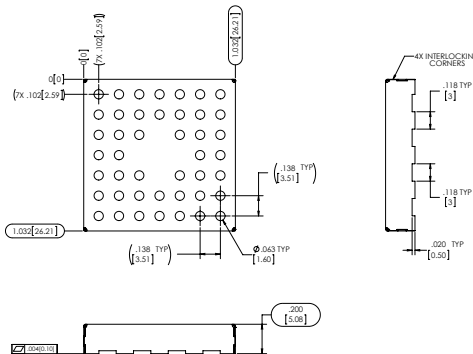
### Tech Clips



### Standard Cover



CARRIER TAPE



### Included in Your Kit

- 1 - 12" x .130" 10-CBS Series Fence
- 1 - 12" x .200" 20-CBS Series Fence
- 1 - 12" x .400" 40-CBS Series Fence
- 1 - 12" x .500" 50-CBS Series Fence
- 1 - 12" x .800" 80-CBS Series Fence
- 20 - Tech Clips in standard tape and reel packaging
- 1 - 5" x 5" x .008" Tech Clip Cover
- 1 - 5" x 5" x .010" Tech Clip Cover
- 1 - 5" x 5" x .015" Tech Clip Cover
- 1 - 1.032" x 1.032" x .200" Standard Cover
- 1 - 6" Stainless Steel Ruler
- 1 - 1" x 12" Conductive Copper Foil Tape

### Applications & Benefits

- Everything you need to assemble a high performance PCB shield prototype without special tools or experience.
- Fast and easy solution to streamline development and EMI test stages of your project saving you time and money.

### Available Through Distribution



**BOARD SHIELD  
PROTOTYPE KIT**

*A passion in all we do*  
[www.LeaderTechInc.com](http://www.LeaderTechInc.com)

ISO 9001: 2008  
CERTIFIED

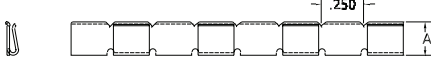
 RoHS  
COMPLIANT

**LEADER  
TECH**   
a HEICO company

**Global EMI Shielding Technology Center**  
12420 Race Track Rd., Tampa, Florida 33626  
866.TECH.EMI (866.832.4364) † 813.855.6921 ‡ 813.855.3291

STATEMENT OF LIEU OF WARRANTY: All technical information and data in this document is based on tests and is believed to be accurate and reliable. Nevertheless, since the products described herein are not provided to conform with mutually accepted specifications and the use thereof is unknown, the manufacturer and seller of the products do not guarantee results, freedom from patent infringement, or suitability of the products for any application thereof. The manufacturer and seller of the products described in this document will provide all possible technical assistance and will replace any products proven defective. No statement or recommendations made by the manufacturer or seller not contained herein shall have any force of effect unless in conformity with an agreement signed by an officer of the seller and manufacturer. Product testing by the purchaser is recommended in order to confirm expected results.

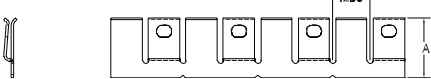
## 10 Series



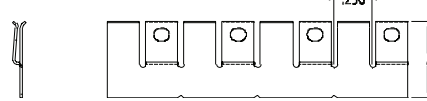
## 20 Series



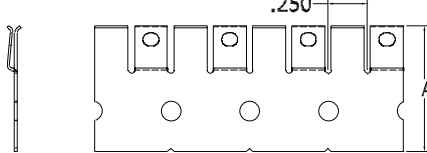
## 40 Series



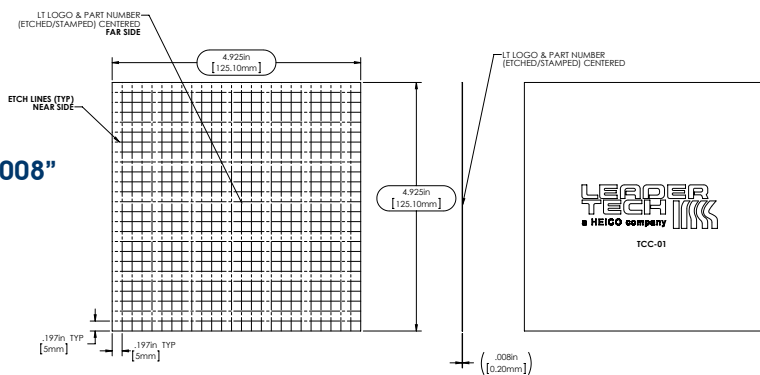
## 50 Series



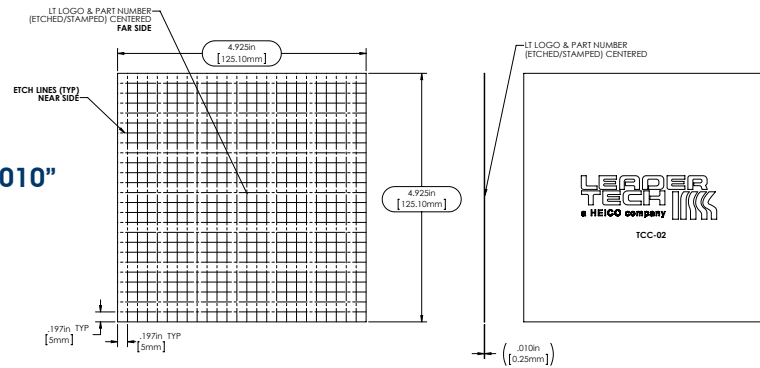
## 80 Series



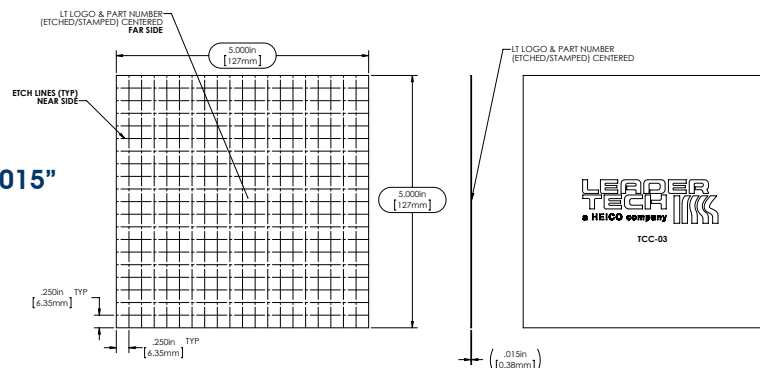
### Tech Clip Cover .008"



### Tech Clip Cover .010"



### Tech Clip Cover .015"



**Global EMI Shielding Technology Center**  
12420 Race Track Rd., Tampa, Florida 33626  
866.TECH.EMI (866.832.4364) † 813.855.6921 ‡ 813.855.3291

STATEMENT OF LIEU OF WARRANTY: All technical information and data in this document is based on tests and is believed to be accurate and reliable. Nevertheless, since the products described herein are not provided to conform with mutually accepted specifications and the use thereof is unknown, the manufacturer and seller of the products do not guarantee results, freedom from patent infringement, or suitability of the products for any application thereof. The manufacturer and seller of the products described in this document will provide all possible technical assistance and will replace any products proven defective. No statement or recommendations made by the manufacturer or seller not contained herein shall have any force of effect unless in conformity with an agreement signed by an officer of the seller and manufacturer. Product testing by the purchaser is recommended in order to confirm expected results.

## Material

- Tech Clips - .008" Thick Pre-Tin Plated Phos. Bronze
- Tech Clip Covers - .008", .010", or .015" Thick Alloy 770
- CBS Series Fences - .015" Thick Pre-Tin Plated Steel
- Standard Cover - .008" Thick Pre-Tin Plated Steel
- Conductive Copper Foil Tape - 0.003" Thick Copper Foil Pressure Sensitive Adhesive

## Assembly Directions



## Availability

- In stock and ready to ship
- Full production quantities of your completed Tech Clip Cover can be made available in as little as 2 weeks.



**BOARD SHIELD  
PROTOTYPE KIT**

*A passion in all we do*  
[www.LeaderTechInc.com](http://www.LeaderTechInc.com)

ISO 9001: 2008 CERTIFIED RoHS COMPLIANT