



Chipsmall Limited consists of a professional team with an average of over 10 year of expertise in the distribution of electronic components. Based in Hongkong, we have already established firm and mutual-benefit business relationships with customers from,Europe,America and south Asia,supplying obsolete and hard-to-find components to meet their specific needs.

With the principle of “Quality Parts,Customers Priority,Honest Operation,and Considerate Service”,our business mainly focus on the distribution of electronic components. Line cards we deal with include Microchip,ALPS,ROHM,Xilinx,Pulse,ON,Everlight and Freescale. Main products comprise IC,Modules,Potentiometer,IC Socket,Relay,Connector.Our parts cover such applications as commercial,industrial, and automotives areas.

We are looking forward to setting up business relationship with you and hope to provide you with the best service and solution. Let us make a better world for our industry!



Contact us

Tel: +86-755-8981 8866 Fax: +86-755-8427 6832

Email & Skype: info@chipsmall.com Web: www.chipsmall.com

Address: A1208, Overseas Decoration Building, #122 Zhenhua RD., Futian, Shenzhen, China



KIT34704BEPEVBE Evaluation Board



Table of Contents

1	Kit Contents / Packing List	2
2	Important Notice	3
3	Introduction	4
4	EVB Features	4
5	Required Equipment	6
6	EVB Setup Configuration Diagram	7
7	KIT34704BEPEVBE Schematic	8
8	KITUSBI2CEVME Schematic	9
9	KIT34704BEPEVBE - Using Hardware	11
10	KITUSBI2CEVME - Using Hardware	13
11	KIT34704BEPEVBE Graphical User Interface	15
12	KIT34704EPEVBE Board Layout	21
13	KITUSBI2CEVME Board Layout	29
14	KIT34704BEPEVBE Bill of Material	34
15	KITUSBI2CEVME Bill of Material	36
16	References	37
17	Revision History	38

1 Kit Contents / Packing List

- KIT34704BEPEVBE
- KITUSBI2CEVME - USB to I²C bridge board for controlling PMIC
- USB A-B Cable
- 4-pin female to female I²C communication cable
- CD34704B

2 Important Notice

Freescall provides the enclosed product(s) under the following conditions:

This evaluation kit is intended for use of ENGINEERING DEVELOPMENT OR EVALUATION PURPOSES ONLY. It is provided as a sample IC pre-soldered to a printed circuit board to make it easier to access inputs, outputs, and supply terminals. This EVB may be used with any development system or other source of I/O signals by simply connecting it to the host MCU or computer board via off-the-shelf cables. This EVB is not a Reference Design and is not intended to represent a final design recommendation for any particular application. Final device in an application will be heavily dependent on proper printed circuit board layout and heat sinking design as well as attention to supply filtering, transient suppression, and I/O signal quality.

The goods provided may not be complete in terms of required design, marketing, and or manufacturing related protective considerations, including product safety measures typically found in the end product incorporating the goods. Due to the open construction of the product, it is the user's responsibility to take any and all appropriate precautions with regard to electrostatic discharge. In order to minimize risks associated with the customers applications, adequate design and operating safeguards must be provided by the customer to minimize inherent or procedural hazards. For any safety concerns, contact Freescale sales and technical support services.

Should this evaluation kit not meet the specifications indicated in the kit, it may be returned within 30 days from the date of delivery and will be replaced by a new kit.

Freescall reserves the right to make changes without further notice to any products herein. Freescall makes no warranty, representation or guarantee regarding the suitability of its products for any particular purpose, nor does Freescall assume any liability arising out of the application or use of any product or circuit, and specifically disclaims any and all liability, including without limitation consequential or incidental damages. "Typical" parameters can and do vary in different applications and actual performance may vary over time. All operating parameters, including "Typical", must be validated for each customer application by customer's technical experts.

Freescall does not convey any license under its patent rights nor the rights of others. Freescall products are not designed, intended, or authorized for use as components in systems intended for surgical implant into the body, or other applications intended to support or sustain life, or for any other application in which the failure of the Freescall product could create a situation where personal injury or death may occur.

Should Buyer purchase or use Freescall products for any such unintended or unauthorized application, Buyer shall indemnify and hold Freescall and its officers, employees, subsidiaries, affiliates, and distributors harmless against all claims, costs, damages, and expenses, and reasonable attorney fees arising out of, directly or indirectly, any claim of personal injury or death associated with such unintended or unauthorized use, even if such claim alleges that Freescall was negligent regarding the design or manufacture of the part. Freescall™ and the Freescall logo are trademarks of Freescall Semiconductor, Inc. All other product or service names are the property of their respective owners. © Freescall Semiconductor, Inc. 2008

3 Introduction

This Evaluation Board demonstrates the capability of the MC34704B as a multi-channel power management IC (PMIC) meant to address power management needs for various multimedia application microprocessors. It provides 5 independent voltages through terminal block connector for an easier out-of-the-box evaluation. A single Terminal block connector for input power supply allows the user to supply the board with either a external DC power supply or a Li-Ion battery to fully evaluate the performance accordingly.

The KIT34704BEPEVBE has the ability to program the switching frequency of VG and regulators 2 through 5 as well as the default soft start timing for all regulators during startup by changing few external components. All other features can be programmed via I₂C communication using a standard 100mils 4-pin header to communicate with either the USB-I₂C bridge included in this package or with any other I₂C communication device preferred by the user.

4 EVB Features

- Input voltage operation range from 2.7 to 5.5V
- 5 independent output voltages accessible through terminal blocks.
- Capable to be programmed via I₂C
- On/Off push button
- Programable Switching frequency for REG2-5 by changing external components
- Programable default soft start for all regulators by changing external components
- 100mils 4-pin standard header connector for I₂C communication
- Small Board Size (6.2cm x 6.2cm)

4.1 AMPD Device Description/Features

- Input voltage operation range from 2.7 to 5.5V
- 5-DC/DC switching regulators with +/-2% output voltage accuracy
- Capable of operating at up to 2.0 MHz switching frequency I₂C programmability
- Output under voltage and over voltage detection for each regulator
- Over current limit detection and short circuit protection for each regulator
- Thermal limit detection for each regulator.
- Integrated Compensation for REG3 and REG8
- 5μA maximum shutdown current (All regulators are off, 5.5V VIN)
- True Cut-off on all of the boost and buck-boost regulators.

4.2 USB to I2C board Features

- Provides an LED for USB Power Status and JB8 Communication Status
- “B” type USB interface connector
- 4 pin connector for the I₂C Interface (SDA, SCL, 5V and GND)
- I₂C Level Shifter IC to allow communication with 5V or 3.3V devices.
- For more information please refer to KITUSBI2CEVME

5 Required Equipment

Minimum required equipment:

- Power supply:
 - from 2.7 to 5.5V or
 - 1 cell Li/Ion/Polymer (2.7 to 4.2V) or
 - 5.0V USB supply or AC wall adapter
- USB enabled Computer with Windows XP or higher.
- CD contains a Graphical User Interface (GUI) allowing control of all PMIC Features through I2C communication.

6 EVB Setup Configuration Diagram

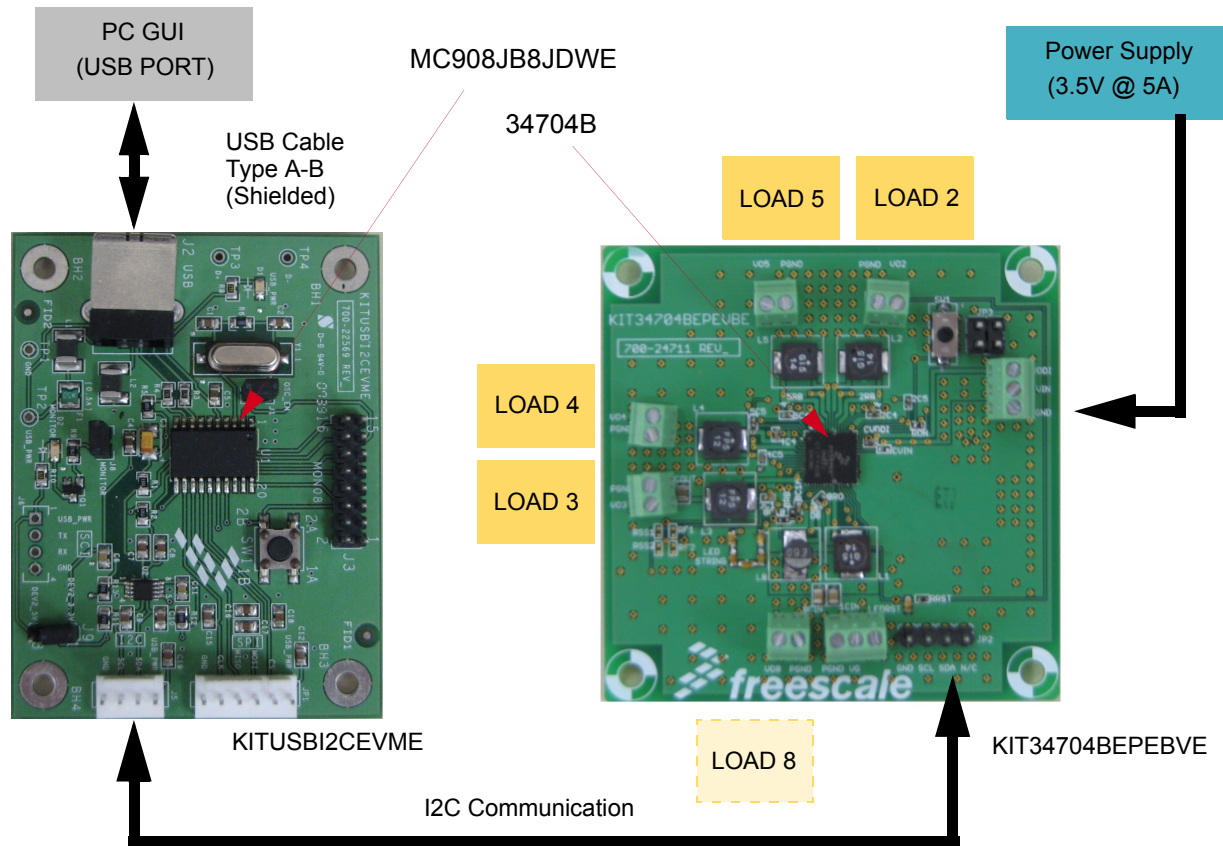


Figure 1. EVB Setup Configuration Diagram

7 KIT34704BEPEVBE Schematic

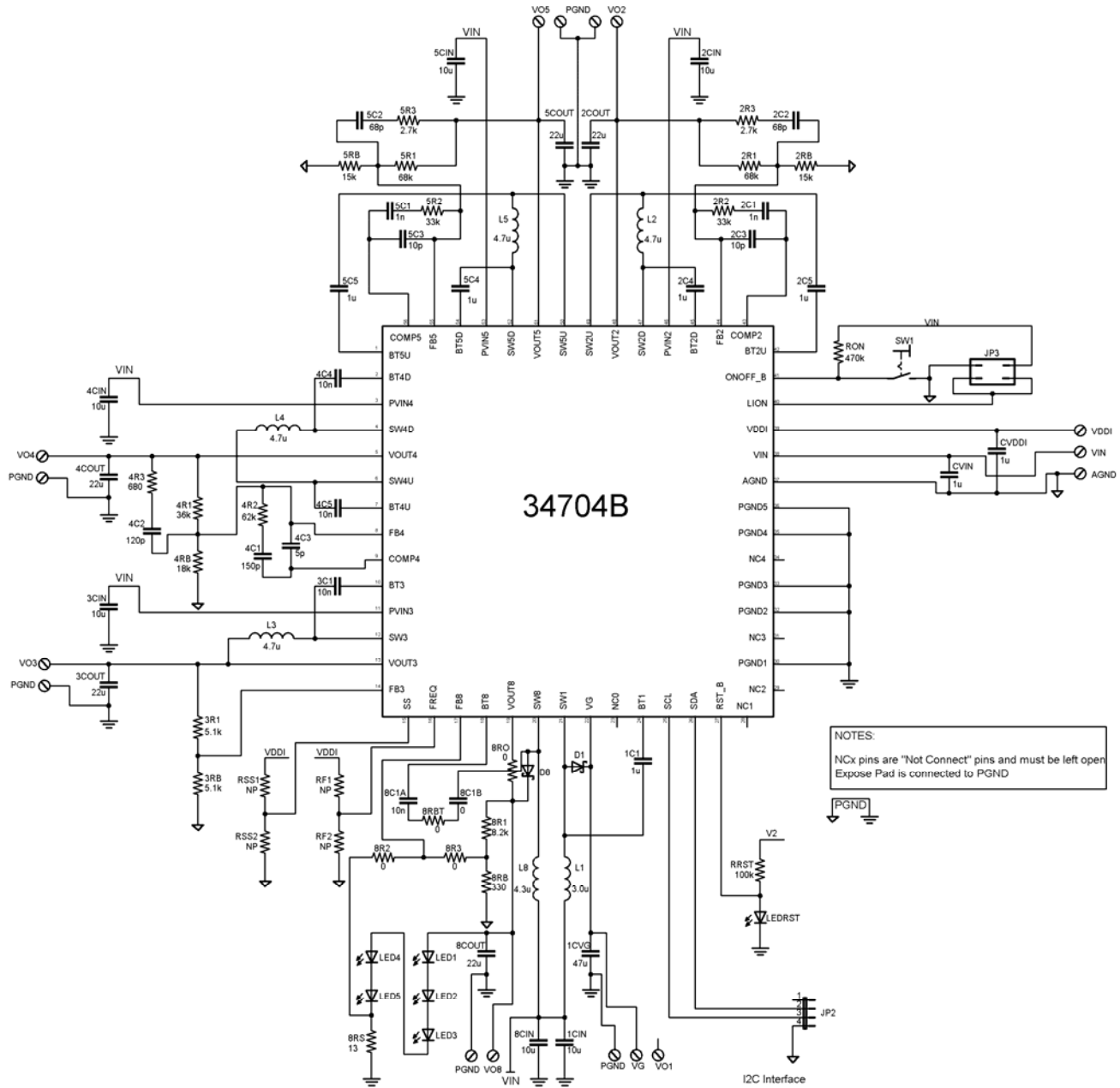


Figure 2. KIT34704BEPEVBE Schematic

8 KITUSBI2CEVME Schematic

I2C Bidirectional Communication: Device 1(3.3V) - Device 2(5V)

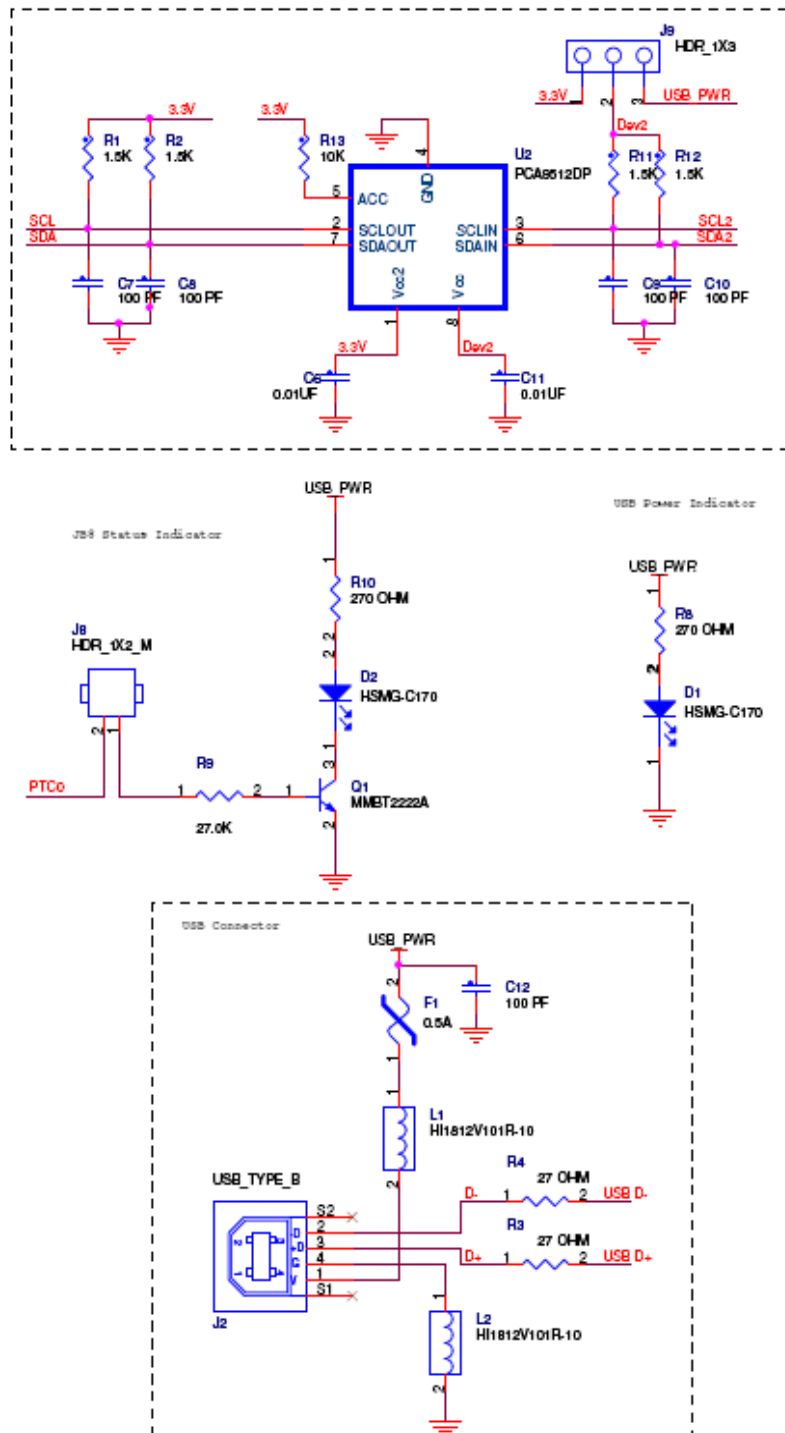


Figure 3. KITUSBI2CEVME Schematic 1



9 KIT34704BEPEVBE - Using Hardware

The KIT34704BEPEVBE operates with a single power supply from 2.7 to 5.5V and is controlled via I2C with the help of an USB-I2C bridge. Applying Input power supply will start up the VG regulator, set switching frequency and soft start and finally turn on REG2, REG3 and REG4 in stand alone mode, all other features can only be controlled via I2C.

9.1 Jumper Connections

Use a jumper on J3 to connect pins 3-4 vertically to set LION to VIN.

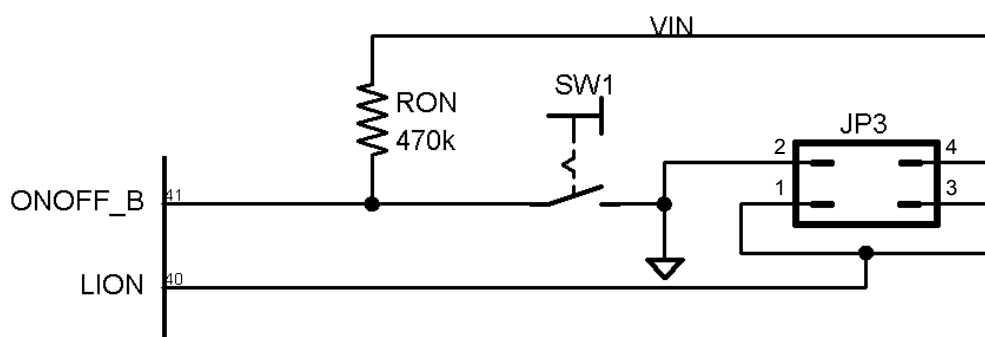


Figure 5. LION set to VIN

Pin 2,3 and 4 of JP2 corresponds to SDA,SCL, and GND signals respectively of the I2C communication, connect to the USB-I2C bridge for programming.

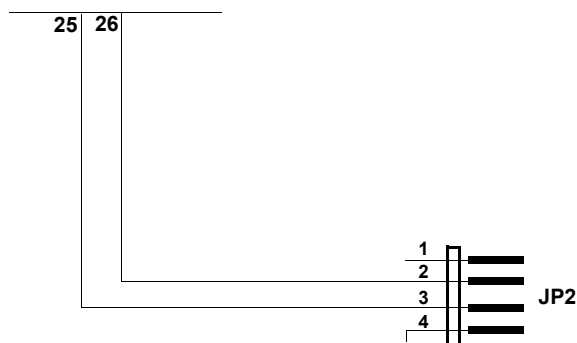


Figure 6. KIT34704BEPEVB I2C Communication connector

9.2 Input/Output power supply terminal blocks

A three-pin terminal block serves as input terminal for the main power between 2.7 to 5.5V to operate the KIT34704BEPEVBE, as well as providing access to the reference voltage VDDI generated by the MC34704B to supply configuration voltages.

Regulator 2 through 8 use a two-pin terminal block to provide each GND reference and VOx respectively. To learn how to configure the output voltage on each regulator, please refer to the MC34704 datasheet that can be found at [www.http://freescale.com](http://freescale.com)

The following diagram shows each of the terminals and its respective output voltage identifier.

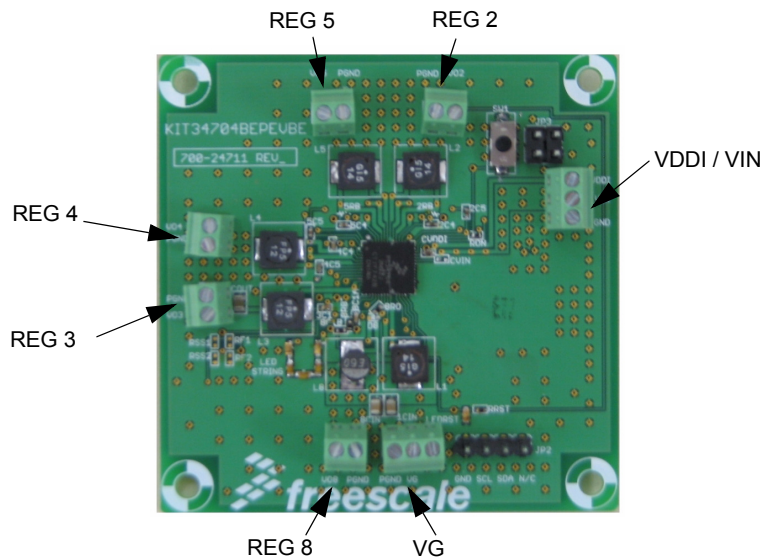


Figure 7. KIT34704BEPEVBE Input/Output terminal blocks

9.3 Starting up the KIT34704BEPEVBE

To Start working with the KIT34704BEPEVBE, provide an input voltage between 2.7 to 5.5V connecting the (+) probe to the VIN terminal and the (-) probe to the GDN terminal on the Input power terminal block. Turn on the power supply and the LEDRST should turn on.

At this moment the three stand alone regulators (REG2, REG3 and REG4) should be providing pre-configured output voltage. To operate the rest of the MC34704B functions, it is necessary to use I2C communication.

Section 11 will discuss how to interact with the KIT34704BEPEVBE using the Graphical User Interface developed by freescale to fully operate the MC34704B.

10.1 Jumper Connections

- Pins 1 & 2 (Pin 3 open): set the I²C pull-up resistors at 3.3V
- Pins 2 & 3 (Pin 1 open): set the I²C pull-up resistors at 5V
- Pin header open: Leave the I²C pull-up resistors open. The slave device should pull up SCL2 and SDA2 signals to a voltage of 3.3V or 5V



10.1.2 J8

This jumper is to enable the status indicator LED. The LED is ON when any operation is being performed by the MCU.

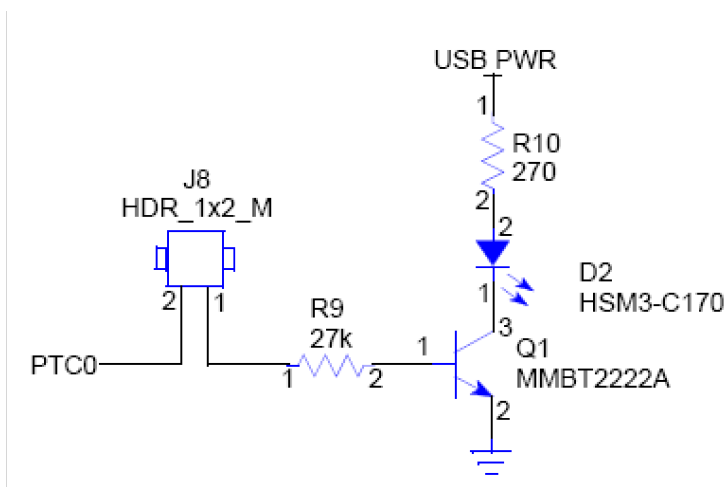


Figure 9. JB8 Status Indicator

10.1.3 J1

The J1 jumper should be disconnected only while JB8 is being programmed. Since the MCU is already programmed, J1 should be connected all the time, so the board operates properly. It is not recommended to program the JB8 due to pre loaded program will be erased and it will not longer operate correctly.

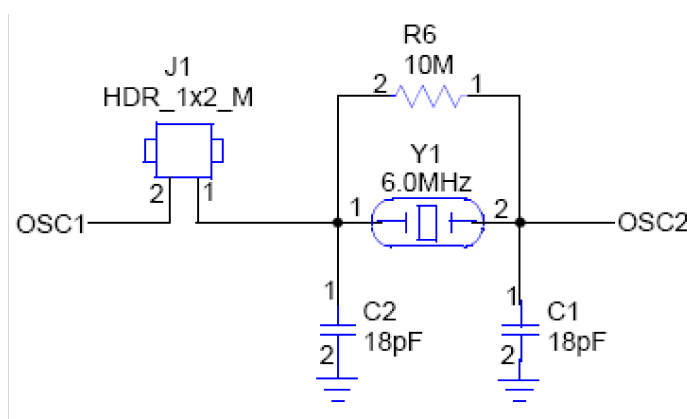


Figure 10. Crystal Circuitry

11 KIT34704BEPEVBE Graphical User Interface

A graphical user interface has been developed to allow the user to fully interact with the KIT34704BEPEVBE using a Windows XP based computer.

11.1 Installing the KIT34704B GUI and KITUSB2CEVME driver

Before connecting the KITUSB2CEVME, install the Graphical User interface by double clicking into the Setup.exe file provided on the CD included with the kit; follow the instructions until the software is fully installed. Microsoft Frameworks 2.0 is required, if it is not previously installed the software will perform this installation prior to the MC34704 GUI software.

Connect the KITUSB2CEVME to the USB port on the host computer for the first time, and the PC will try to recognize the USB device; when the driver selection window appears select the option "Install from a list or specific Location".

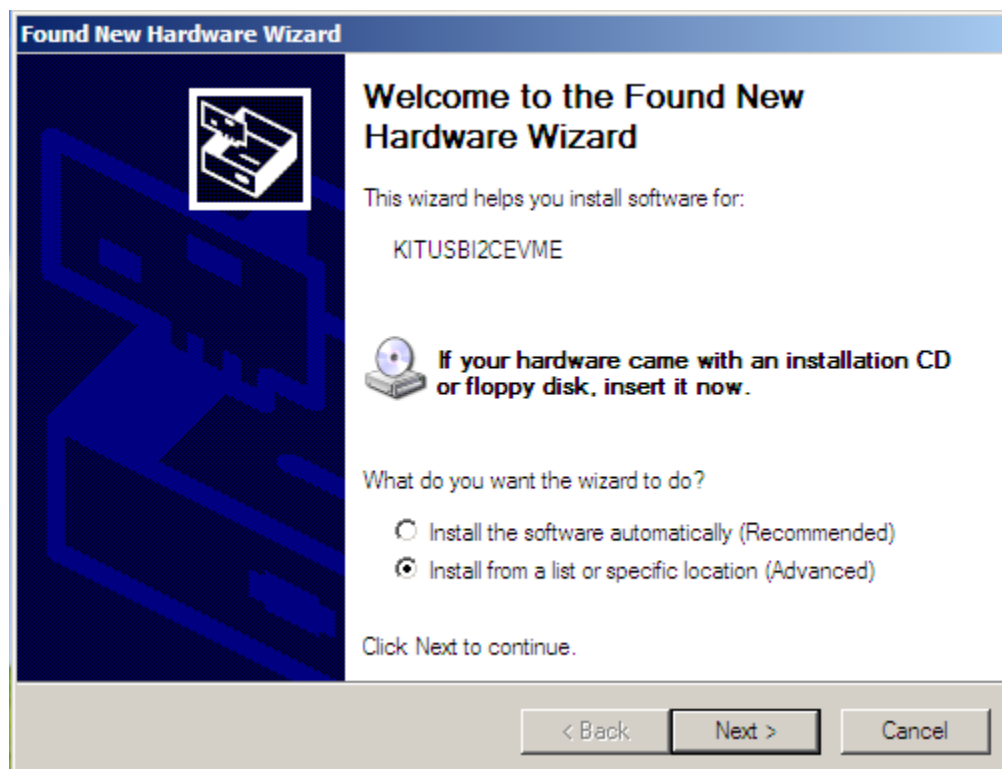


Figure 11. KITUSB2CEVME Driver installation Window.

In the next window browse the path where you installed the KIT34704GUI and click Next. At this time, the Computer should recognize the KITUSB2CEVME board and be ready to use the Graphical User Interface to control the KIT34704xPEVBE

11.1.1 Working with the KIT34704GUI

The Graphical User Interface allows the user to program all I2C features by using a friendly interface as well as modifying the register table manually for advance users. To launch the MC34704 GUI application, select the application icon from the Freescale folder in the Start menu as it is shown in the picture below.



Figure 12. Launching MC34704 GUI application

The following is a list of all buttons and their description:

- **General configurations**
 - a) **Device general ON/OFF button:** Allows the user to make a software OFF instruction by setting the SHTD flag. When a software shutdown is done, to turn the device back ON, first clear the SHTD bit by Pressing this button ON, and then do a hardware turn ON with a falling edge on the ONOFF terminal.
 - b) **GRPC/E Power Sequencing:** allows to change the power sequencing for regulators 5, 6 and 7, please refer to I2C register section on Datasheet for more details on how this works.
 - c) **Shutdown Hold time:** Program the waiting time for a shutdown after the Hardware shutdown push button is pressed.

- d) **REG6/7/8 FSW:** program the internal FSW2 that serve as switching frequency for regulator 6, 7 and 8.
- e) **5/8 channel enable button:** This buttons allows the configuration for either the MC34704B (8 channel) or the MC34704B (5 channel) Evaluation Kit.
- **Group B**
 - f) **REGx DVS:** dynamic voltage scaling to modify the output voltage on each regulator up to $\pm 20\%$.
 - g) **REGx over/under voltage response:** setting the “Set flag on OV/UV” or “Sdown on OV/UV” option allows to turn on a fault flag only or completely shutdown the GRPB respectively when an over voltage or under voltage is present on one of the Regulator that belong to this group.
- **Group A**
 - h) **REG1 DVS:** dynamic voltage scaling to modify the output voltage on each regulator up to $\pm 20\%$.
 - i) **REG1 over/under voltage response:** setting the “Set flag on OV/UV” or “Sdown on OV/UV” option allows to turn on a fault flag only or shutdown the GRPA respectively when an over voltage or under voltage is present on REG1.
 - j) **REG1 ON/OFF button:** turns on/off regulator 1.
- **Group C/E**
 - k) **REGx DVS:** dynamic voltage scaling to modify the output voltage on each regulator up to $\pm 20\%$.
 - l) **REGx Soft Start:** Allows to independently control the soft start for each one of the regulators included in this group.
 - m) **REGx over/under voltage response:** setting the “Set flag on OV/UV” or “Sdown on OV/UV” option allows to turn on a fault flag only or completely shutdown the Group E/C, respectively, when an over voltage or under voltage is present on one of the Regulator that belong to this group.
 - n) **Group E ON/OFF button:** turns on/off REG5 when its set to turn on independently.
 - o) **Group C ON/OFF button:** If REG5 is set to turn on independently, this button only controls the on/off state of REG6 and REG7. If REG5 is set to turn on together with REG6 and 7, this button control the on/off state of all three regulators following the previously set power on sequence.
- **Group D**
 - p) **REG8 DVS:** dynamic voltage scaling to modify the output voltage on REG8 up to $\pm 20\%$ when voltage mode control is set.
 - q) **REG8 Soft Start:** Allows to independently control the soft start for REG8.
 - r) **REG8 control mode:** when set to “Volt” it uses a standard voltage divider to set the output voltage. when set to “Curr” it uses Rsens at the end of a LED string to set the desired current flowing through the LED string.

- s) **REG8 over/under voltage response:** setting the “Set flag on OV/UV” or “Sdown on OV/UV” option allows to turn on a fault flag only or shuts down the GRPD, respectively, when an over voltage or under voltage is present on one of the Regulator that belong to this group.
- t) **REG8 Current scaling:** Allows to select a fraction of the maximum current flowing through the LED string when the current mode control is selected.
- u) **REG8 ON/OFF button:** turns on/off regulator 8.
- **Special Registers**
 - v) **REG3 fine voltage Scaling:** allows to dynamically modify the output voltage on Regulator 3 in 0.5% variation steps.
 - w) **REG7 Independent ON/OFF:** allow to turn on Regulator 7 independently without having to turn on all Regulators on GRPC. REG7 features can still be configured using the boxes in Regulator 7 section.
- **Operating Buttons**
 - x) **Real time configuration Button:** start an infinite read/write cycle to allow the user to modify the registers and observe changes in real time.
 - y) **Stop Button:** Stop the real time cycle.
 - z) **Read Button:** Read all registers once in order to debug for latched flags.
 - aa) **Write Button:** write the register configurations Once, changes to the features do not have effect until next write cycle is done.
 - ab) **Register Table button:** shows the MC34704B Register table, where the user can manually configure the registers. Before configuring the Register table manually, please refer to the Datasheet to learn full operation of each one of the Register
 - ac) **Help button:** Show the brief operating procedure for the KIT34704GUI.
- **Fault Indicators**
 - TSD: Thermal Shutdown Flag
 - SCF: Short Circuit Flag
 - OVF: Over voltage Flag
 - UVF: Under Voltage Flag
 - ILIM: Over current Flag
 - DVS: Dynamic voltage Scaling flag

Since the MC34704 GUI can be used to control the MC34704A and the MC34704B, all Registers and Functions that do not apply to the MC3404B are displayed in gray as disabled. To work with the MC34704B, ensure the MC34704B Enable/Disable button is set to Enabled.

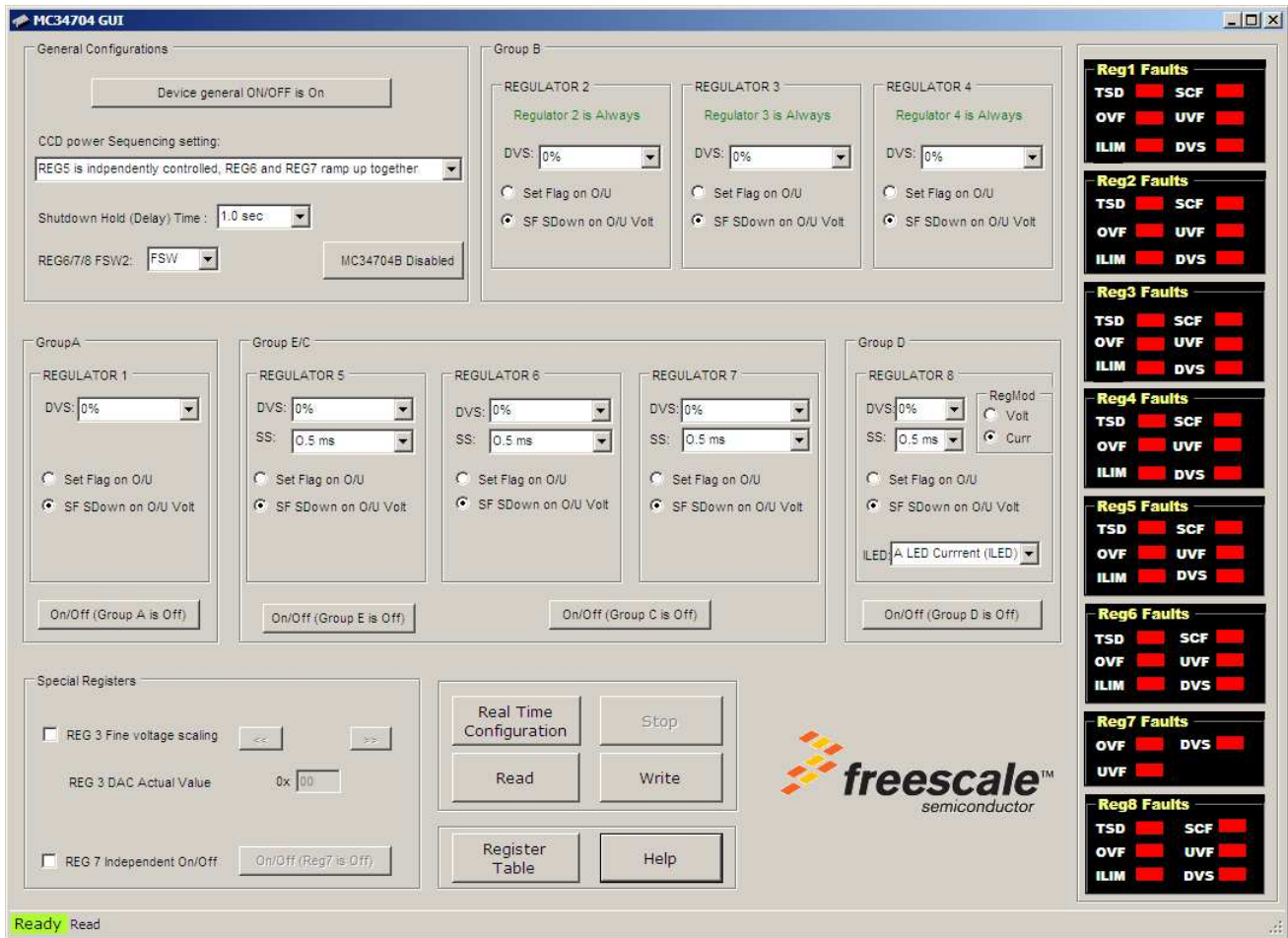


Figure 13. MC34704 GUI Main Screen.

Registers

Registers	ADDRESS	NAME	D7	D6	D5	D4	D3	D2	D1	D0	Data
	\$01	GENERAL1					<input type="checkbox"/> SDELAY1	<input type="checkbox"/> SDELAY0	<input type="checkbox"/> CCDSEQ1	<input type="checkbox"/> CCDSEQ0	<input type="text" value="00"/>
	\$02	GENERAL2				<input type="checkbox"/> ALLOFF	<input type="checkbox"/> ONOFFA	<input type="checkbox"/> ONOFFC	<input type="checkbox"/> ONOFFD	<input type="checkbox"/> ONOFFE,1	<input type="text" value="00"/>
	\$03	GENERAL3				<input type="checkbox"/> SHTD	<input type="checkbox"/> COLDF	<input type="checkbox"/> BATTYPE	<input type="checkbox"/> SSTM1	<input type="checkbox"/> SSTM0,0	<input type="text" value="00"/>
	\$04	REG1SET1				<input type="checkbox"/> DVSET1_3	<input type="checkbox"/> DVSET1_2	<input type="checkbox"/> DVSET1_1	<input type="checkbox"/> DVSET1_0	<input type="checkbox"/> OVUSET1,1	<input type="text" value="00"/>
	\$05	REG1SET2			<input type="checkbox"/> TSDF1	<input type="checkbox"/> SCF1	<input type="checkbox"/> ILIMF1	<input type="checkbox"/> UVF1	<input type="checkbox"/> OVVF1	<input type="checkbox"/> DVSTAT1,0	<input type="text" value="00"/>
	\$06	REG2SET1				<input type="checkbox"/> DVSET2_3	<input type="checkbox"/> DVSET2_2	<input type="checkbox"/> DVSET2_1	<input type="checkbox"/> DVSET2_0	<input type="checkbox"/> OVUSET2,1	<input type="text" value="00"/>
	\$07	REG2SET2			<input type="checkbox"/> TSDF2	<input type="checkbox"/> SCF2	<input type="checkbox"/> ILIMF2	<input type="checkbox"/> UVF2	<input type="checkbox"/> OVVF2	<input type="checkbox"/> DVSTAT2,0	<input type="text" value="00"/>
	\$08	REG3SET1				<input type="checkbox"/> DVSET3_3	<input type="checkbox"/> DVSET3_2	<input type="checkbox"/> DVSET3_1	<input type="checkbox"/> DVSET3_0	<input type="checkbox"/> OVUSET3,1	<input type="text" value="00"/>
	\$09	REG3SET2			<input type="checkbox"/> TSDF3	<input type="checkbox"/> SCF3	<input type="checkbox"/> ILIMF3	<input type="checkbox"/> UVF3	<input type="checkbox"/> OVVF3	<input type="checkbox"/> DVSTAT3,0	<input type="text" value="00"/>
	\$0A	REG4SET1				<input type="checkbox"/> DVSET4_3	<input type="checkbox"/> DVSET4_2	<input type="checkbox"/> DVSET4_1	<input type="checkbox"/> DVSET4_0	<input type="checkbox"/> OVUSET4,1	<input type="text" value="00"/>
	\$0B	REG4SET2			<input type="checkbox"/> TSDF4	<input type="checkbox"/> SCF4	<input type="checkbox"/> ILIMF4	<input type="checkbox"/> UVF4	<input type="checkbox"/> OVVF4	<input type="checkbox"/> DVSTAT4,0	<input type="text" value="00"/>
	\$0C	REG5SET1				<input type="checkbox"/> DVSET5_3	<input type="checkbox"/> DVSET5_2	<input type="checkbox"/> DVSET5_1	<input type="checkbox"/> DVSET5_0	<input type="checkbox"/> OVUSET5,1	<input type="text" value="00"/>
	\$0D	REG5SET2							<input type="checkbox"/> SSET5_1	<input type="checkbox"/> SSET5_0,1	<input type="text" value="00"/>
	\$0E	REG5SET3			<input type="checkbox"/> TSDF5	<input type="checkbox"/> SCF5	<input type="checkbox"/> ILIM5	<input type="checkbox"/> UVF5	<input type="checkbox"/> OVVF5	<input type="checkbox"/> DVSTAT5,0	<input type="text" value="00"/>
	\$0F	REG6SET1				<input type="checkbox"/> DVSET6_3	<input type="checkbox"/> DVSET6_2	<input type="checkbox"/> DVSET6_1	<input type="checkbox"/> DVSET6_0	<input type="checkbox"/> OVUSET6,1	<input type="text" value="00"/>
	\$10	REG6SET2							<input type="checkbox"/> SSET6_1	<input type="checkbox"/> SSET6_0,1	<input type="text" value="00"/>
	\$11	REG6SET3			<input type="checkbox"/> TSDF6	<input type="checkbox"/> SCF6	<input type="checkbox"/> ILIMF6	<input type="checkbox"/> UVF6	<input type="checkbox"/> OVVF6	<input type="checkbox"/> DVSTAT6,0	<input type="text" value="00"/>
	\$12	REG7SET1				<input type="checkbox"/> DVSET7_3	<input type="checkbox"/> DVSET7_2	<input type="checkbox"/> DVSET7_1	<input type="checkbox"/> DVSET7_0	<input type="checkbox"/> OVUSET7,1	<input type="text" value="00"/>
	\$13	REG7SET2					<input type="checkbox"/> REG7FSW2_1	<input type="checkbox"/> REG7FSW2_0	<input type="checkbox"/> SSET7_1	<input type="checkbox"/> SSET7_0,1	<input type="text" value="00"/>
	\$14	REG7SET3						<input type="checkbox"/> UVF7	<input type="checkbox"/> OVVF7	<input type="checkbox"/> DVSTAT7,0	<input type="text" value="00"/>
	\$15	REG8SET1				<input type="checkbox"/> DVSET8_3	<input type="checkbox"/> DVSET8_2	<input type="checkbox"/> DVSET8_1	<input type="checkbox"/> DVSET8_0	<input type="checkbox"/> OVUSET8,1	<input type="text" value="00"/>
	\$16	REG8SET2		<input type="checkbox"/> ILED_3	<input type="checkbox"/> ILED_2	<input type="checkbox"/> ILED_1	<input type="checkbox"/> ILED_0	<input type="checkbox"/> REG8MOD	<input type="checkbox"/> SSET8_1	<input type="checkbox"/> SSET8_0,1	<input type="text" value="00"/>
	\$17	REG8SET3			<input type="checkbox"/> TSDF8	<input type="checkbox"/> SCF8	<input type="checkbox"/> ILIMF8	<input type="checkbox"/> UVF8	<input type="checkbox"/> OVVF8	<input type="checkbox"/> DVSTAT8,0	<input type="text" value="00"/>
	\$18	FAULTS	<input type="checkbox"/> FLT8	<input type="checkbox"/> FLT7	<input type="checkbox"/> FLT6	<input type="checkbox"/> FLT5	<input type="checkbox"/> FLT4	<input type="checkbox"/> FLT3	<input type="checkbox"/> FLT2	<input type="checkbox"/> FLT1,0	<input type="text" value="00"/>
	\$19	12CSET1								<input type="checkbox"/> ACCURATE,1	<input type="text" value="00"/>
	\$49	REG3DAC	<input type="checkbox"/> 3DAC7	<input type="checkbox"/> 3DAC6	<input type="checkbox"/> 3DAC5	<input type="checkbox"/> 3DAC4	<input type="checkbox"/> 3DAC3	<input type="checkbox"/> 3DAC2	<input type="checkbox"/> 3DAC1	<input type="checkbox"/> 3DAC0	<input type="text" value="00"/>
	\$58	REG7CR0	<input type="checkbox"/> EN_1	<input type="checkbox"/> EN_0		<input type="checkbox"/> DISCHG_B					<input type="text" value="00"/>
	\$59	REG7DAC7	<input type="checkbox"/> 7DAC7	<input type="checkbox"/> 7DAC6	<input type="checkbox"/> 7DAC5	<input type="checkbox"/> 7DAC4	<input type="checkbox"/> 7DAC3	<input type="checkbox"/> 7DAC2	<input type="checkbox"/> 7DAC1	<input type="checkbox"/> 7DAC0	<input type="text" value="00"/>

Figure 14. MC34704 GUI Register Table Window.

12 KIT34704EPEVBE Board Layout

12.1 Assembly Layer Top

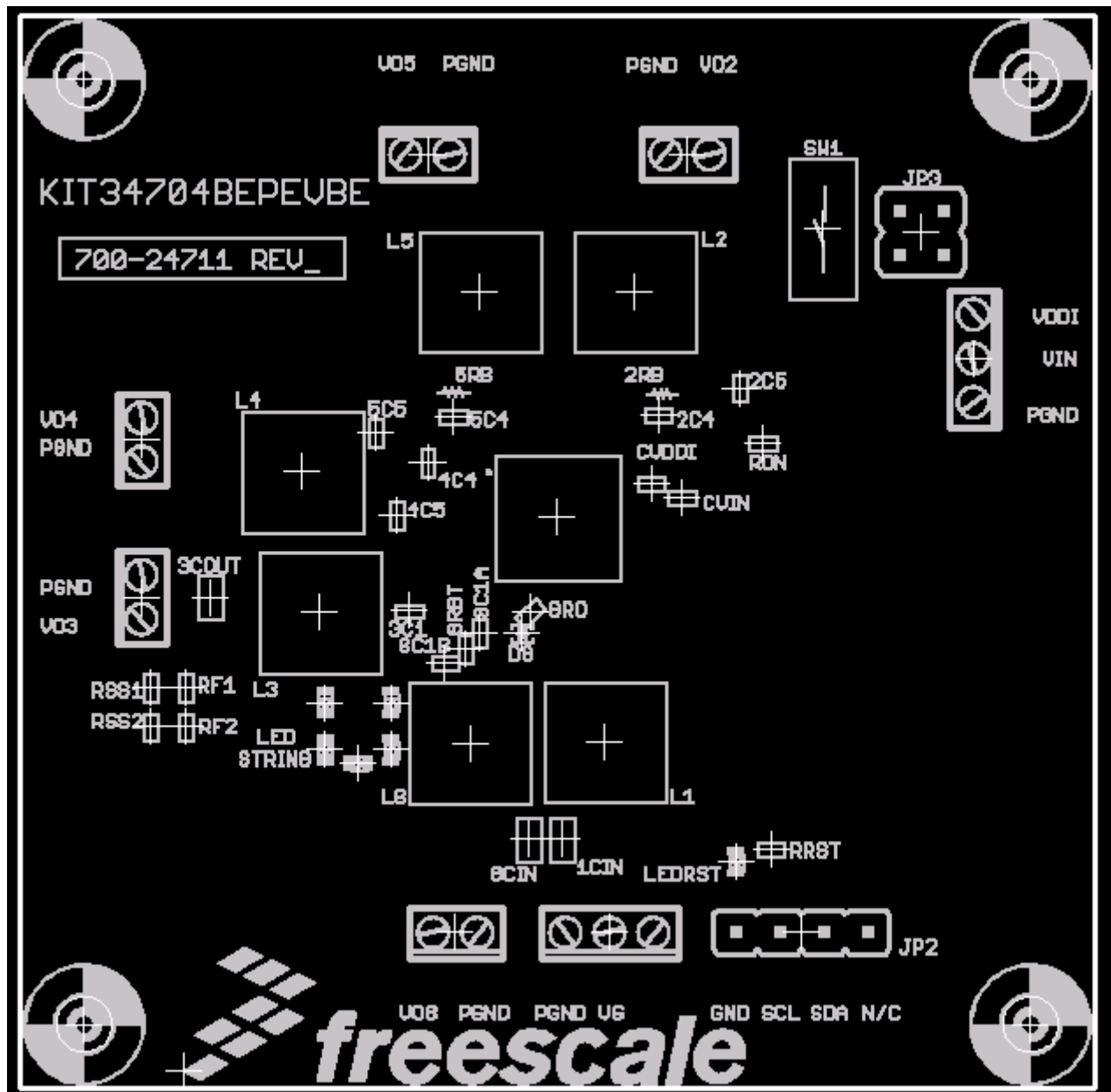


Figure 15. KIT34704BEPEVBE Assembly Layer Top

12.2 Assembly Layer Bottom

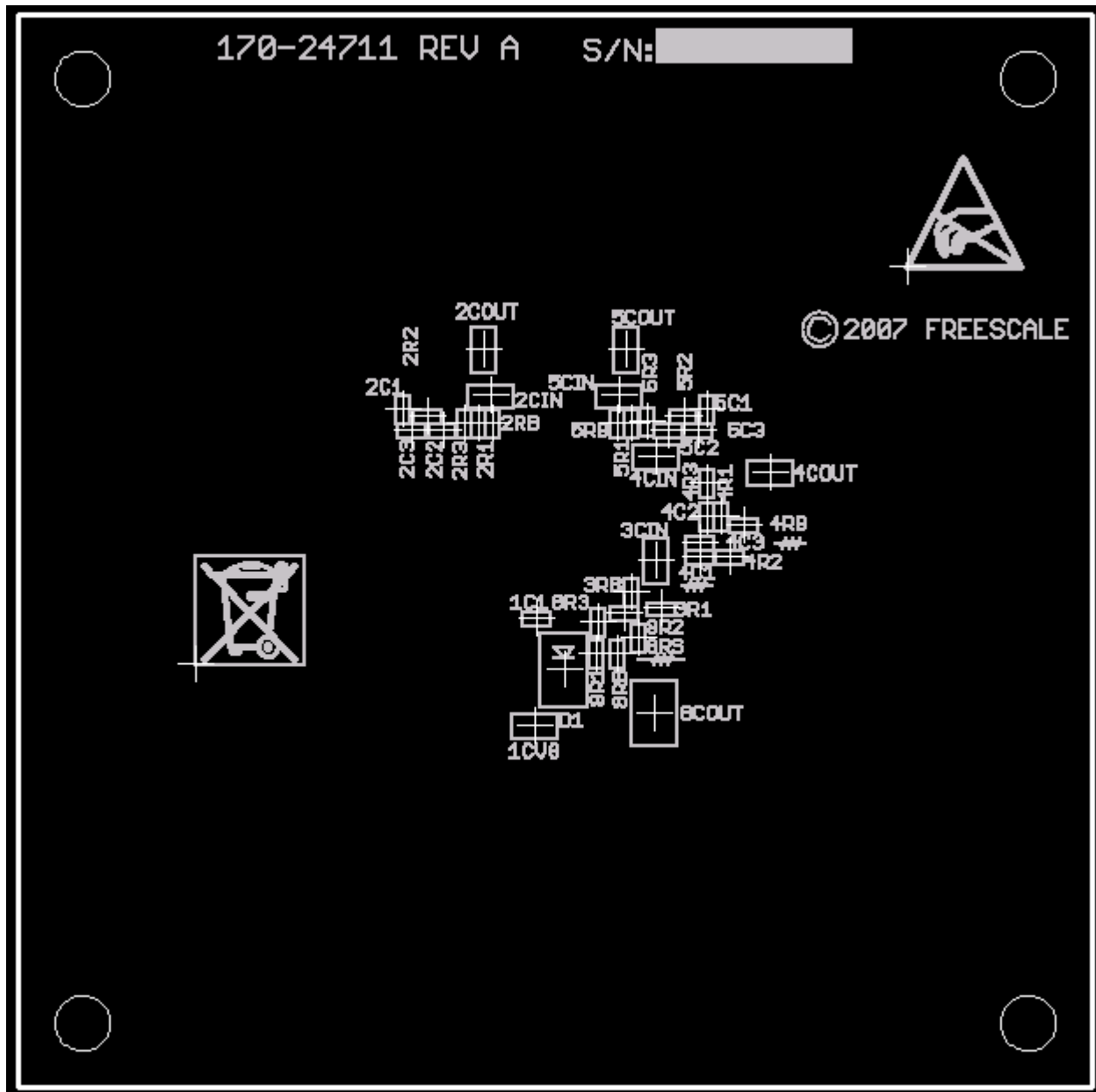


Figure 16. KIT34704BEPEVBE Assembly Layer Bottom

12.3 Top Layer Routing

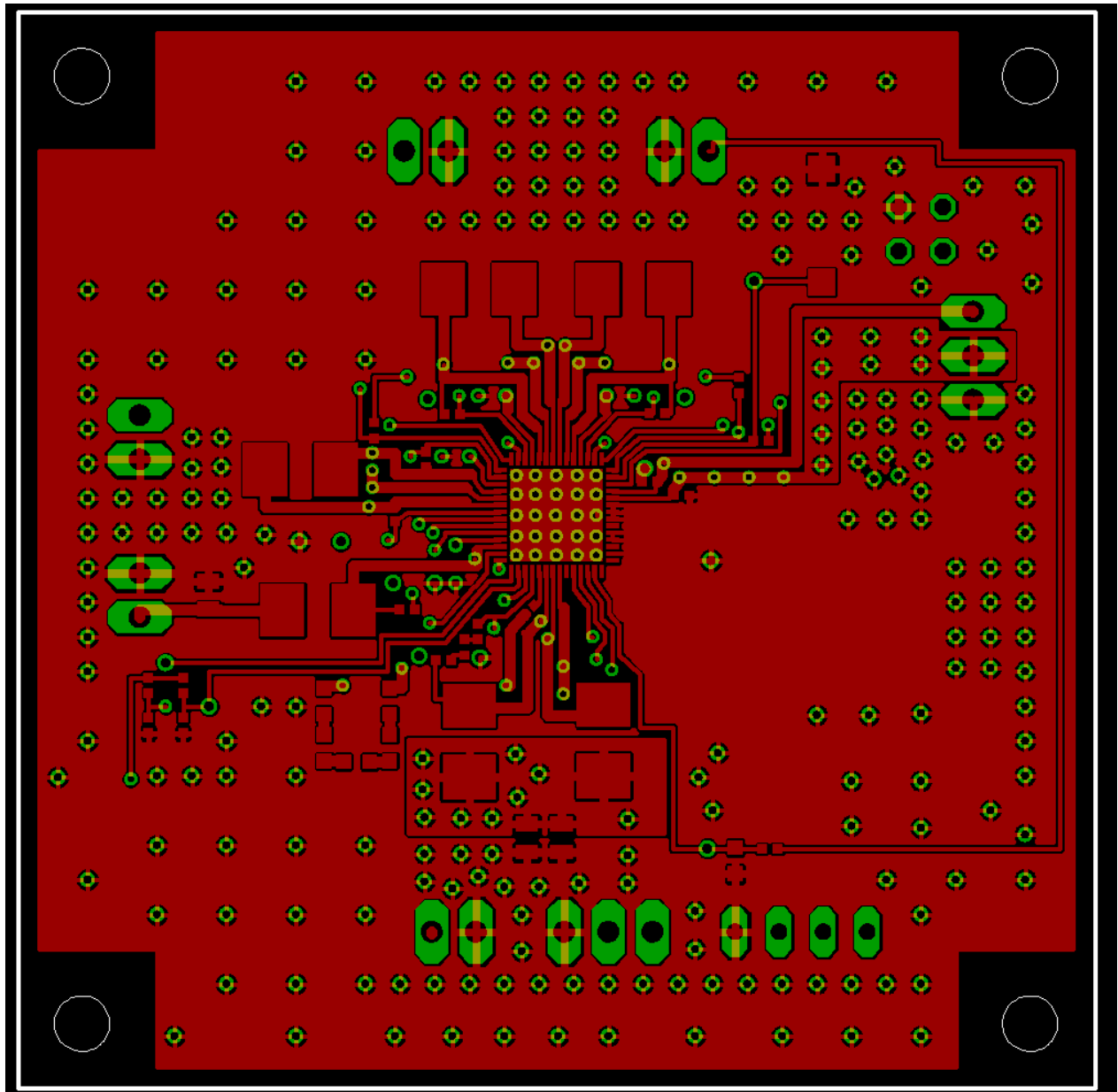


Figure 17. KIT34704BEPEVBE Top Layer Routing

12.4 Inner Layer 1 Routing

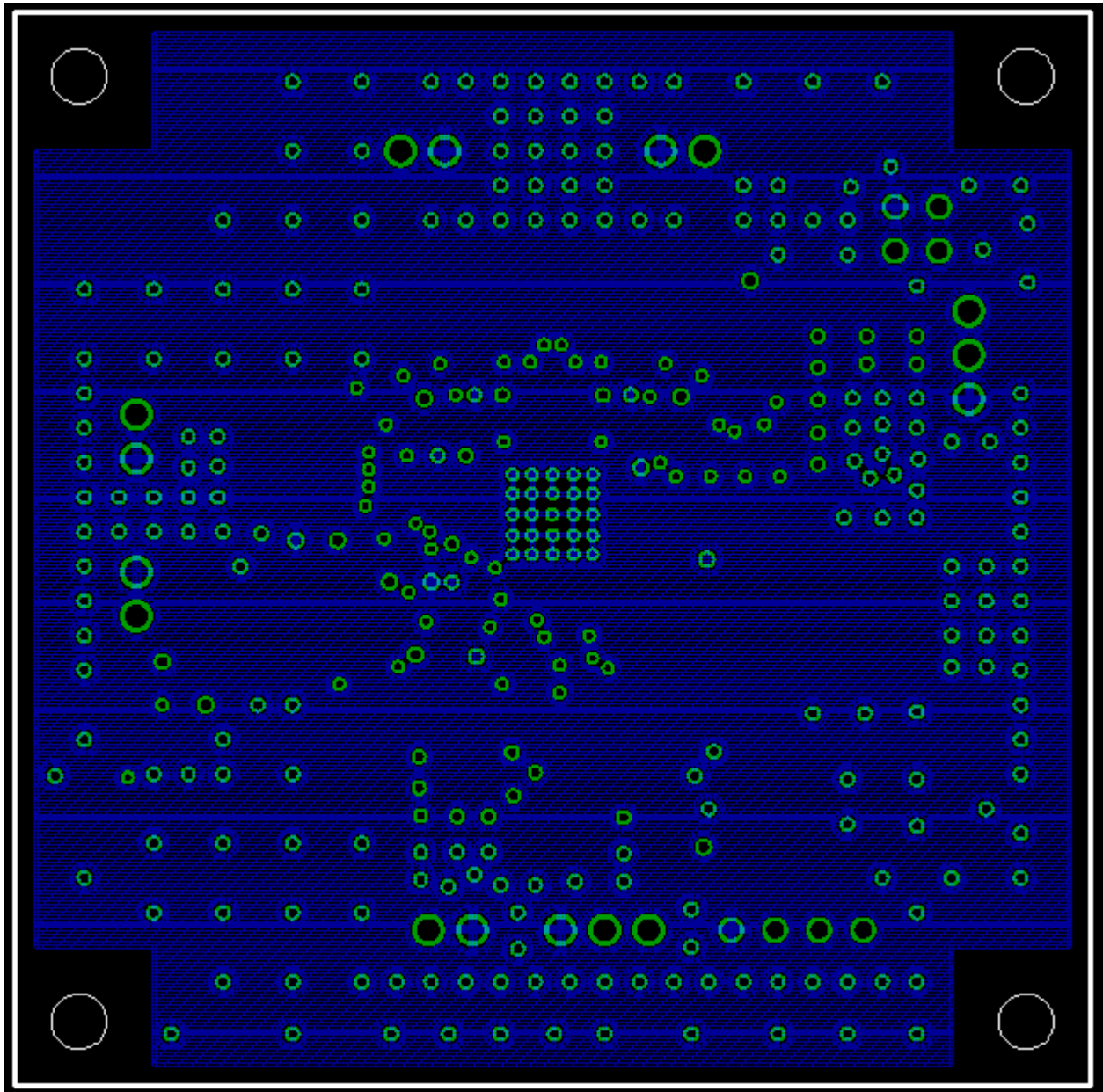


Figure 18. KIT34704BEPEVBE Inner Layer 1 Routing

12.5 Inner Layer 2 Routing

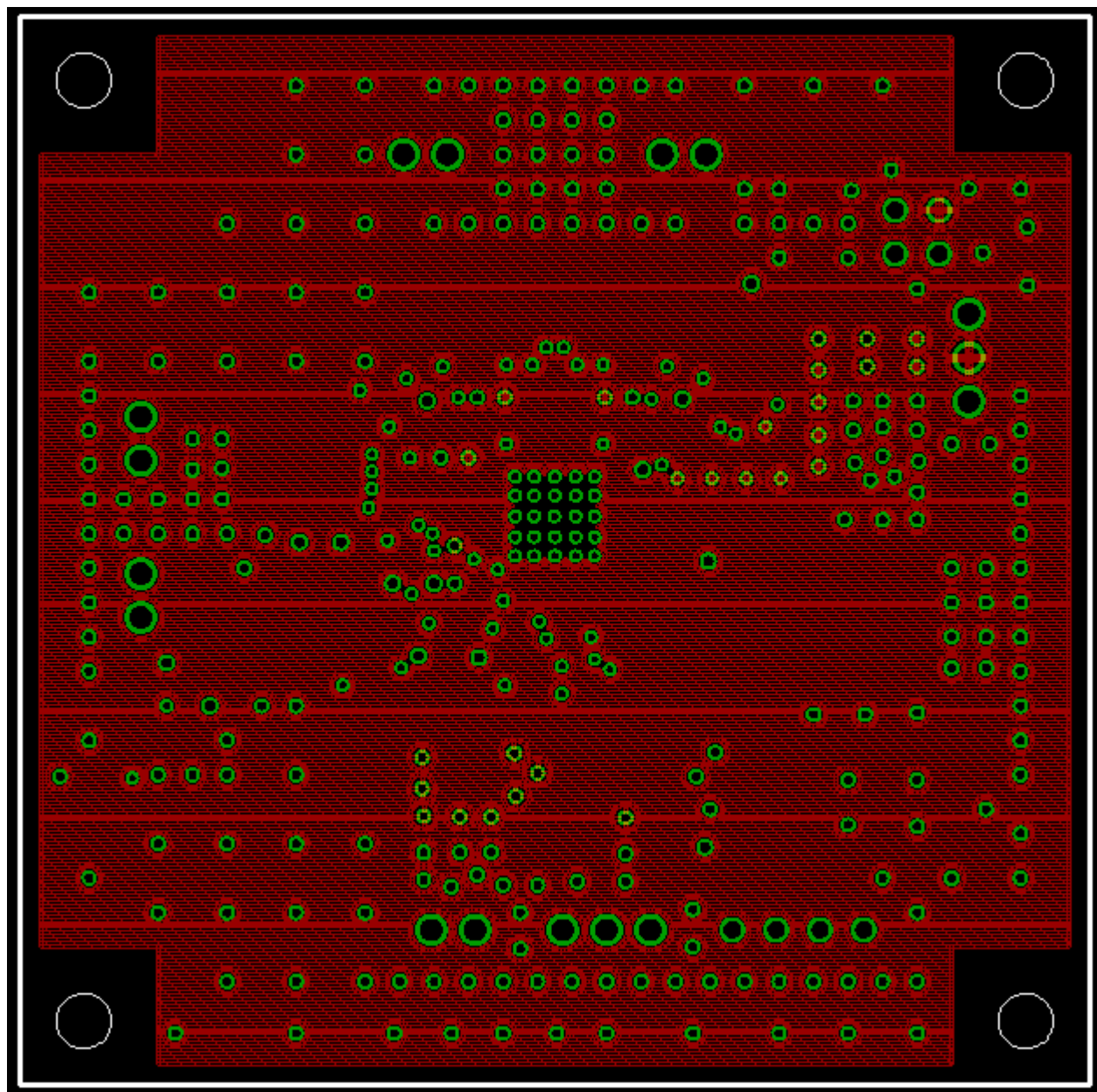


Figure 19. KIT34704BEPEVBE Inner Layer 2 Routing