



Chipsmall Limited consists of a professional team with an average of over 10 year of expertise in the distribution of electronic components. Based in Hongkong, we have already established firm and mutual-benefit business relationships with customers from,Europe,America and south Asia,supplying obsolete and hard-to-find components to meet their specific needs.

With the principle of “Quality Parts,Customers Priority,Honest Operation,and Considerate Service”,our business mainly focus on the distribution of electronic components. Line cards we deal with include Microchip,ALPS,ROHM,Xilinx,Pulse,ON,Everlight and Freescale. Main products comprise IC,Modules,Potentiometer,IC Socket,Relay,Connector.Our parts cover such applications as commercial,industrial, and automotives areas.

We are looking forward to setting up business relationship with you and hope to provide you with the best service and solution. Let us make a better world for our industry!



## Contact us

Tel: +86-755-8981 8866 Fax: +86-755-8427 6832

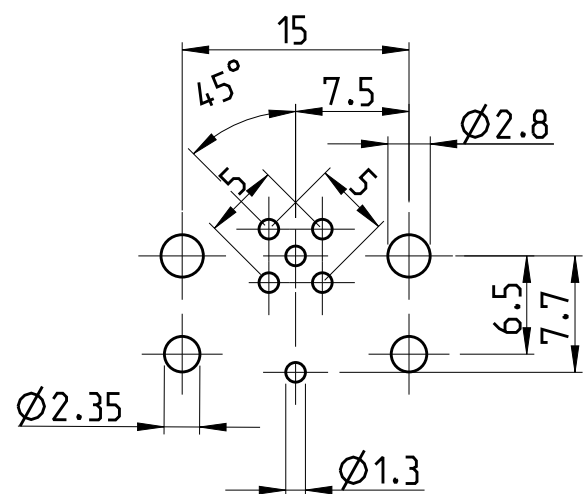
Email & Skype: [info@chipsmall.com](mailto:info@chipsmall.com) Web: [www.chipsmall.com](http://www.chipsmall.com)

Address: A1208, Overseas Decoration Building, #122 Zhenhua RD., Futian, Shenzhen, China



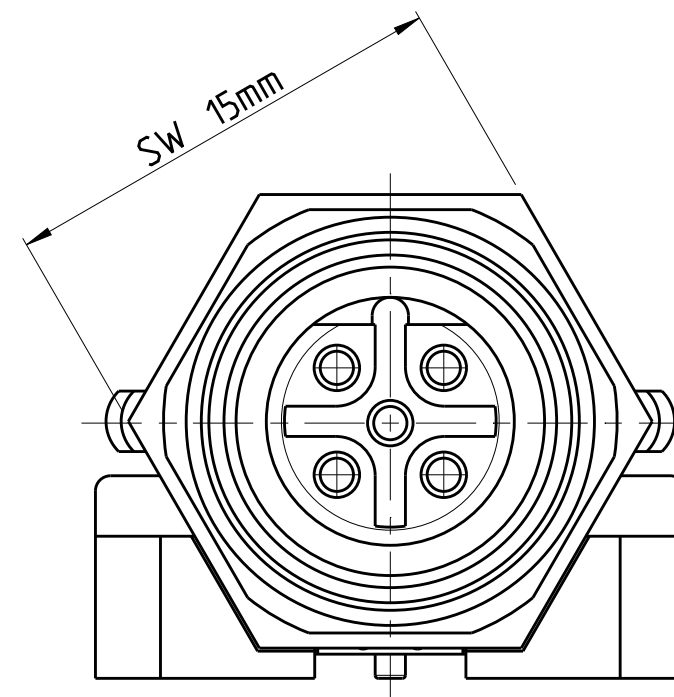
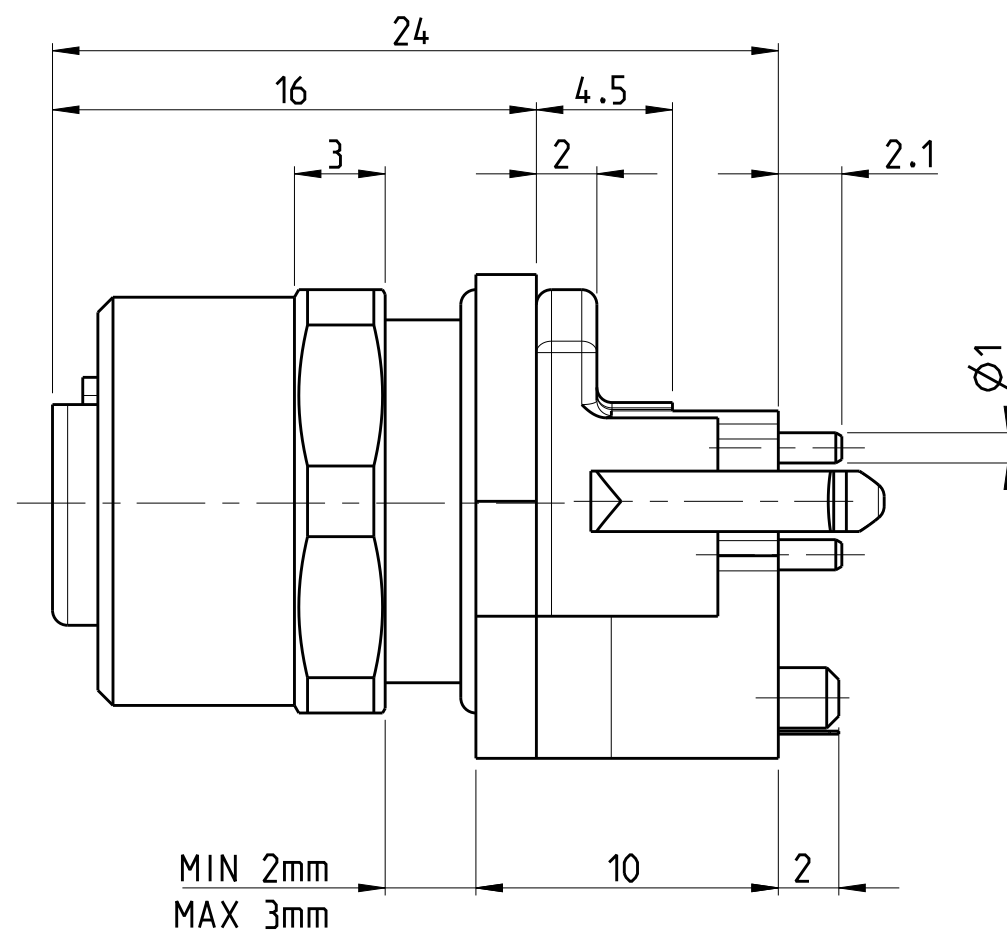
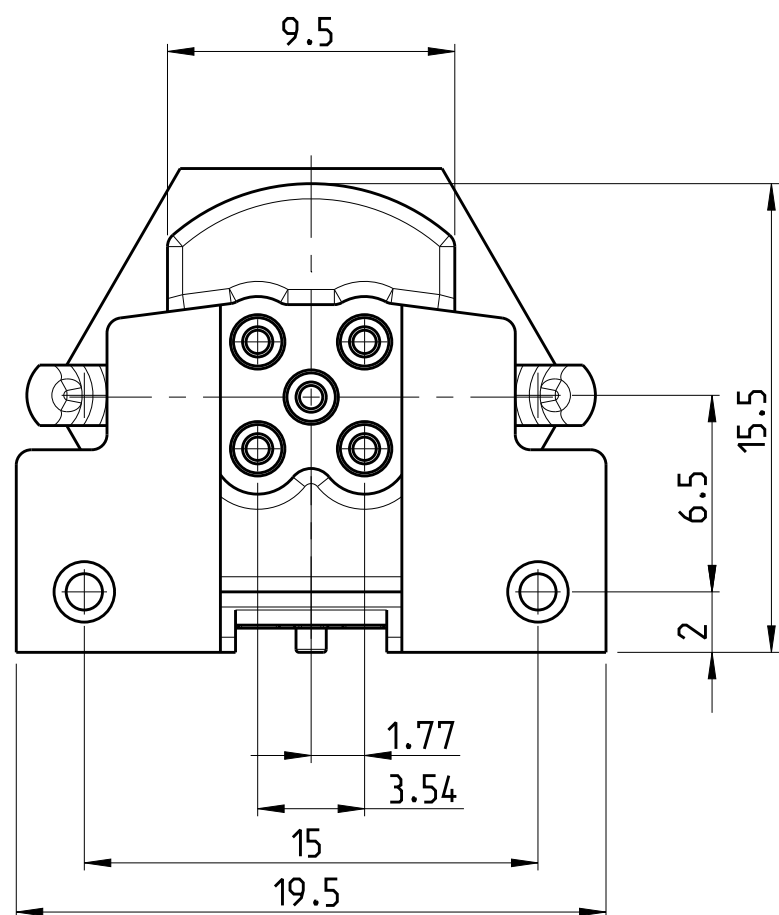
PROJECT NR.:		REVISIONS				
PRJ-11-000004377		AENDERUNGEN	DESCRIPTION	DATE	DWN	APVD
P	LTR	BESCHREIBUNG				
	A	NEW RELEASE			28NOV2014	CR JK

CONDUCTOR LAYOUT



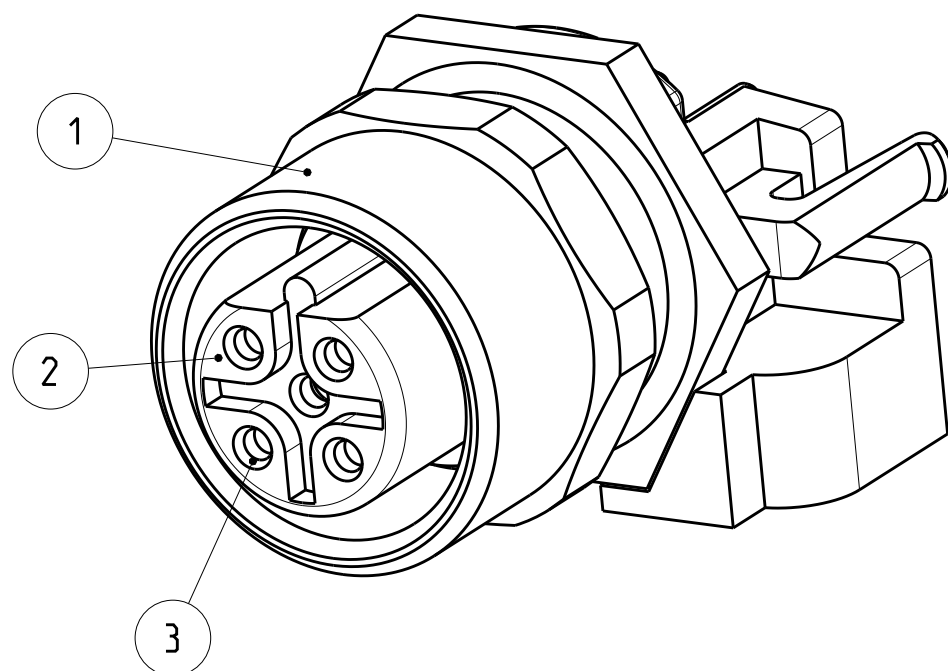
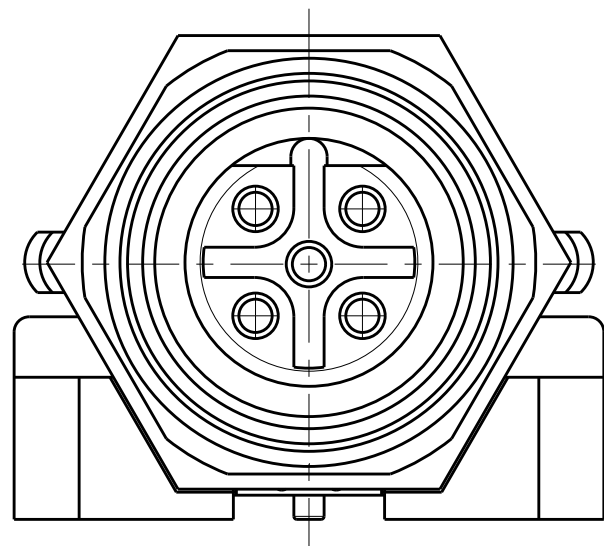
- 1 MATERIAL: ITEM NO. 1: HOUSING - CuZn (BRASS NICKEL PLATED)  
ITEM NO. 2: CONTACT BODY - PA  
ITEM NO. 3: CONTACT - CuSn (BRONZE)  
CONTACT FINISH - Au (GOLD)
- 2 ALL DIMENSIONS ARE FOR NOMINAL REFERENCE ONLY UNLESS OTHERWISE STATED

TECHNICAL DATA	4-2172074-2
RATED VOLTAGE	125V
RATED IMPULSE VOLTAGE	1500V
POLLUTION DEGREE	3
OVERVOLTAGE CATEGORY	II
MATERIAL GROUP	II
RATED CURRENT	4A
VOLUME RESISTIVITY	≤ 3mΩ
DEGREE OF PROTECTION	IP68
UPPER TEMPERATURE	+85 °C
LOWER TEMPERATURE	+40 °C



PIN ARRANGEMENT  
B-CODING

4-2172074-2



SIZE ISO 14405 ⓔ

DIESE ZEICHNUNG IST EIN KONTROLLIERTES DOKUMENT. BEMASSUNGEN UND TOLERANZEN GEMAESS GPS (ISO STANDARDS).		5		4-2172074-2	
THIS DRAWING IS A CONTROLLED DOCUMENT. DIMENSIONING AND TOLERANCING PER GPS (ISO STANDARDS).		MATERIAL		NUMBER OF POLES	
DIMENSIONS: MASSEINHEITEN: [mm]		TOLERANCES UNLESS OTHERWISE SPECIFIED: ALLGEMEINTOLERANZEN		TE Connectivity	
[Symbol]		0 PLC ± 1 PLC ± 2 PLC ± 3 PLC ± 4 PLC ± ANGLES/° INKEL ± FINISH/OBERFLÄCHE/FARBE		NAME	
MATERIAL		DWN YASHKUMAR 25 JUL 2014 CHK M. BRUBAKER 25 JUL 2014 APVD M. BRUBAKER 25 JUL 2014		M12 RECEPTACLE CONNECTOR, PCB ASSEMBLY, STRAIGHT, SHIELDED B CODING	
-		PRODUCT SPEC 108-19483		SIZE	
-		APPLICATION SPEC 114-32127		CAGE CODE	
-		WEIGHT GEWICHT		DRAWING NO. ZEICHNUNGS-NR.	
-		Customer Drawing		A2 00779	
		/KUNDENZEICHNUNG		RESTRICTED TO NUR FÜR	
		SCALE MASSSTAB		2:1	
		SHEET BLATT		1 OF 1	
				REV A	