



Chipsmall Limited consists of a professional team with an average of over 10 year of expertise in the distribution of electronic components. Based in Hongkong, we have already established firm and mutual-benefit business relationships with customers from,Europe,America and south Asia,supplying obsolete and hard-to-find components to meet their specific needs.

With the principle of "Quality Parts,Customers Priority,Honest Operation,and Considerate Service",our business mainly focus on the distribution of electronic components. Line cards we deal with include Microchip,ALPS,ROHM,Xilinx,Pulse,ON,Everlight and Freescale. Main products comprise IC,Modules,Potentiometer,IC Socket,Relay,Connector.Our parts cover such applications as commercial,industrial, and automotives areas.

We are looking forward to setting up business relationship with you and hope to provide you with the best service and solution. Let us make a better world for our industry!



Contact us

Tel: +86-755-8981 8866 Fax: +86-755-8427 6832

Email & Skype: info@chipsmall.com Web: www.chipsmall.com

Address: A1208, Overseas Decoration Building, #122 Zhenhua RD., Futian, Shenzhen, China





KLG-100100-18CU Product Datasheet

KLG-100100-18CU is a round 100mm wafer of Monolayer CVD graphene film, on 18 micron thick copper foil.

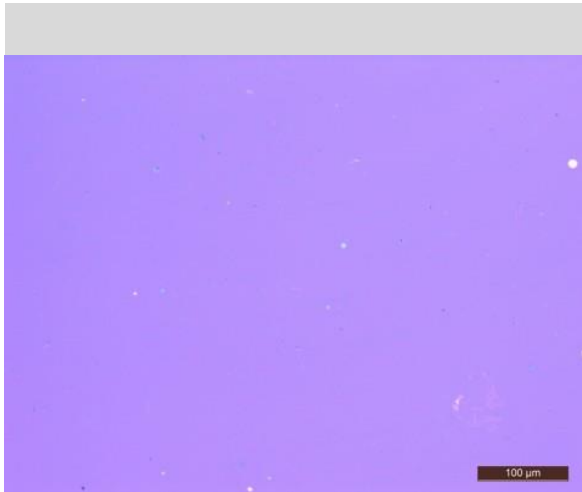
Graphene Film

Growth Method	CVD
Transfer Method	Clean transfer
Quality Control	Raman and Optical Microscopy
Appearance (Color)	Transparent
Transparency	>97%
Appearance (Form)	Film
Coverage	>95%
Number of graphene layers	1
Thickness (theoretical)	0.345 nm
Grain size	Up to 10 μm

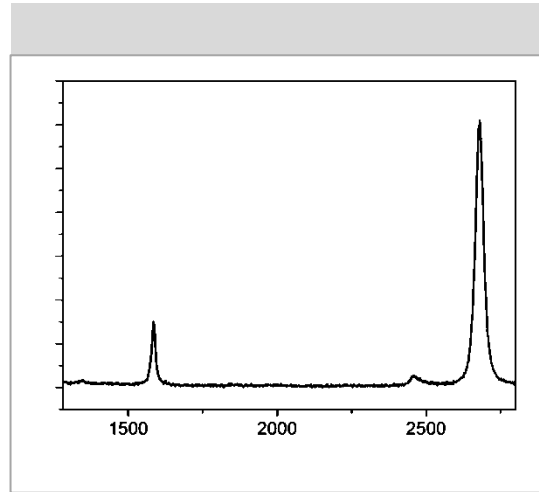
Cu foil

Thickness	18 μm
Note:	The copper foil has been pretreated for easier bottom layer removal

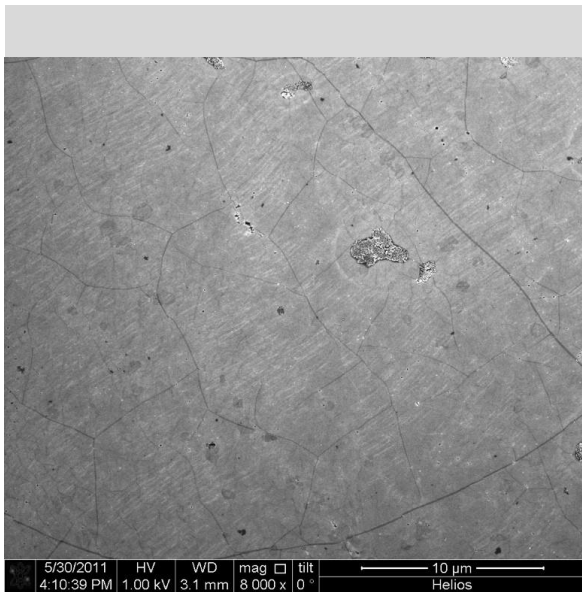
Optical Microscopy



Raman Spectrum



SEM image



HRTEM image

