



Chipsmall Limited consists of a professional team with an average of over 10 year of expertise in the distribution of electronic components. Based in Hongkong, we have already established firm and mutual-benefit business relationships with customers from,Europe,America and south Asia,supplying obsolete and hard-to-find components to meet their specific needs.

With the principle of “Quality Parts,Customers Priority,Honest Operation,and Considerate Service”,our business mainly focus on the distribution of electronic components. Line cards we deal with include Microchip,ALPS,ROHM,Xilinx,Pulse,ON,Everlight and Freescale. Main products comprise IC,Modules,Potentiometer,IC Socket,Relay,Connector.Our parts cover such applications as commercial,industrial, and automotives areas.

We are looking forward to setting up business relationship with you and hope to provide you with the best service and solution. Let us make a better world for our industry!



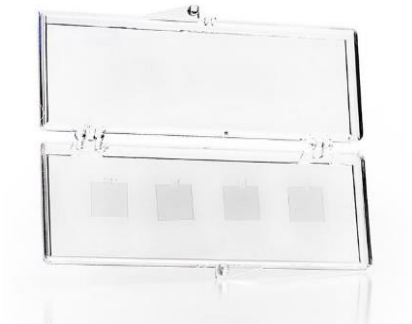
Contact us

Tel: +86-755-8981 8866 Fax: +86-755-8427 6832

Email & Skype: info@chipsmall.com Web: www.chipsmall.com

Address: A1208, Overseas Decoration Building, #122 Zhenhua RD., Futian, Shenzhen, China





KLG-1010-18Q Product Datasheet

KLG-1010-18Q is a 4 pack of monolayer graphene film on 18-micron thick quartz substrate.

Graphene Film

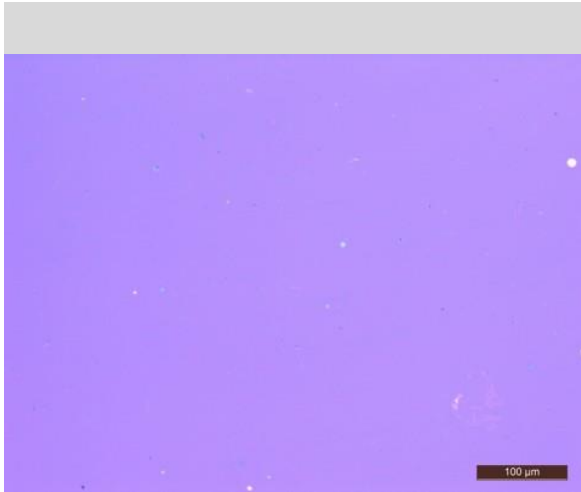
Growth Method	CVD synthesis
Transfer Method	Clean transfer method
Quality Control	Raman and Optical Microscopy
Appearance (Color)	Transparent
Transparency	>97%
Appearance (Form)	Film
Coverage	>95%
Number of graphene layers	1
Theoretical thickness	0.345 nm
Sheet Resistance Quartz (Van der Pauw)	370±50 Ohms/sq. (1cm x 1cm)
Grain size	Up to 10 µm

Substrates

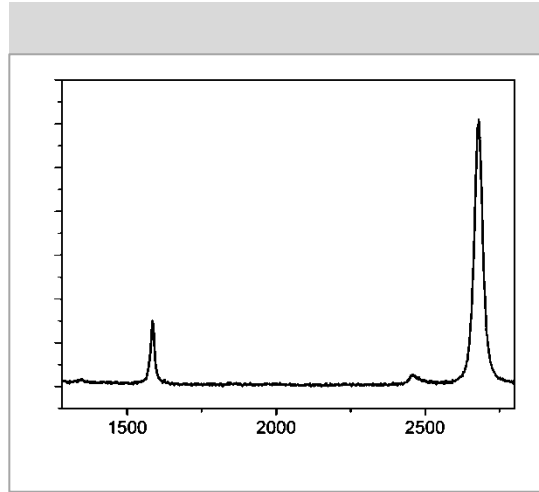
Quartz

Flatness	Bow: 20µm; Warp: 30µm
Polished	Double side polished

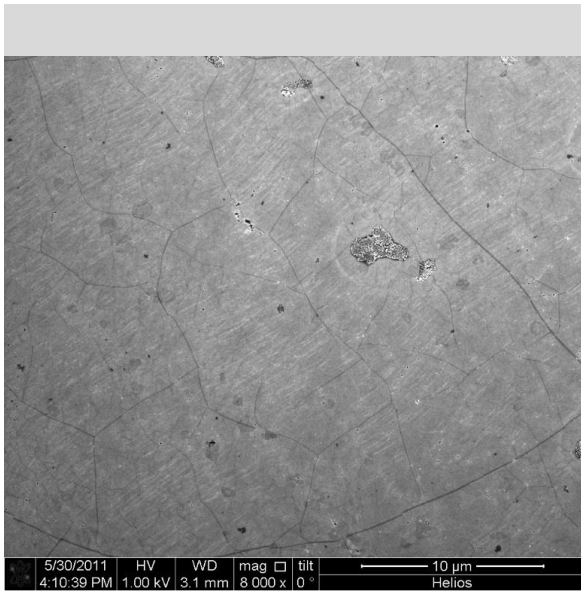
Optical Microscopy



Raman Spectrum



SEM image



HRTEM image

