



Chipsmall Limited consists of a professional team with an average of over 10 year of expertise in the distribution of electronic components. Based in Hongkong, we have already established firm and mutual-benefit business relationships with customers from,Europe,America and south Asia,supplying obsolete and hard-to-find components to meet their specific needs.

With the principle of "Quality Parts,Customers Priority,Honest Operation,and Considerate Service",our business mainly focus on the distribution of electronic components. Line cards we deal with include Microchip,ALPS,ROHM,Xilinx,Pulse,ON,Everlight and Freescale. Main products comprise IC,Modules,Potentiometer,IC Socket,Relay,Connector.Our parts cover such applications as commercial,industrial, and automotives areas.

We are looking forward to setting up business relationship with you and hope to provide you with the best service and solution. Let us make a better world for our industry!



Contact us

Tel: +86-755-8981 8866 Fax: +86-755-8427 6832

Email & Skype: info@chipsmall.com Web: www.chipsmall.com

Address: A1208, Overseas Decoration Building, #122 Zhenhua RD., Futian, Shenzhen, China





C&K KP Series Piezo Pulse Momentary Pushbutton Switches

Pushbutton
A



Features/Benefits

- Piezo switch element—no mechanical wear
- One piece hermetically sealed construction
- Shock resistant switch, withstands harsh environments
- Available in aluminum and plastic housings
- RoHS compliant models available

Typical Applications

- Industrial controls
- High end instrumentation
- Gas pumps, outdoor environments

Specifications

RATING: 250 mA continuous, 50 V max.
 ELECTRICAL LIFE: 10,000,000 actuations typ.
 CONTACT RESISTANCE: ON: 7.5Ω; OFF: 5 megohms.
 INSULATION RESISTANCE: 10⁹Ω min.
 ACTUATION: 8oz typical up to 3lbs max.
 OPERATING TEMPERATURE: -40°C to 85°C.
 CIRCUIT CLOSURE DURATION: 50 mS min.

Materials

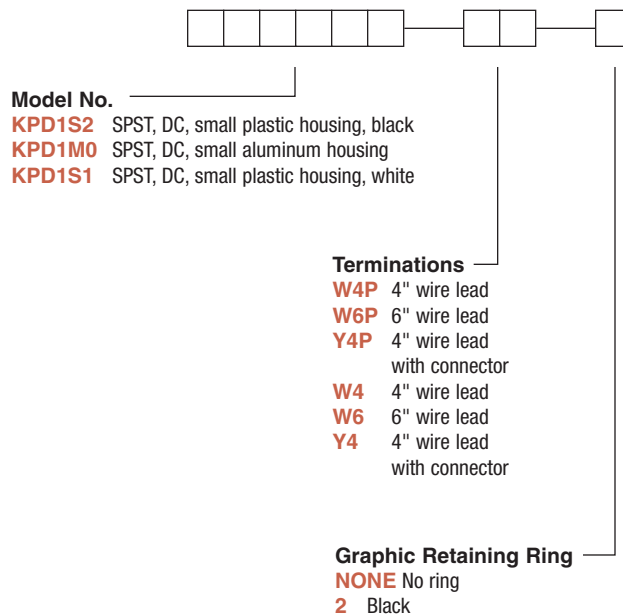
HOUSING: L and S Models: Polyetherimide (UL 94V-0), black, standard; M Models: Aluminum, natural iridite finish.
 WIRE LEADS: 22 AWG with TFE Teflon insulation; Red positive lead, violet negative lead.
 GRAPHIC RETAINING RING: 6/6 nylon (UL 94V-2).
 MOUNTING NUT: L Models: Nylon; M and S Models: Steel, zinc plated.
 LOCKWASHER: M and S Models only: Steel, zinc plated.
 Any models supplied with W4P, W6P or Y4P termination are RoHS compliant and compatible.

NOTE: For the latest information regarding RoHS compliance, please go to: www.ittcannon.com/rohs. Any models supplied with W4P, W6P or Y4P termination are RoHS compliant and compatible.

NOTE: Specifications and materials listed above are for switches with standard options. For information on specific and custom switches, consult Customer Service Center.

Build-A-Switch

To order, simply select desired option from each category and place in the appropriate box. Available options are shown and described on pages A-87 and A-88. For additional options not shown in catalog, consult Customer Service Center.



Dimensions are shown: Inches (mm)
 Specifications and dimensions subject to change

C&K KP Series Piezo Pulse Momentary Pushbutton Switches



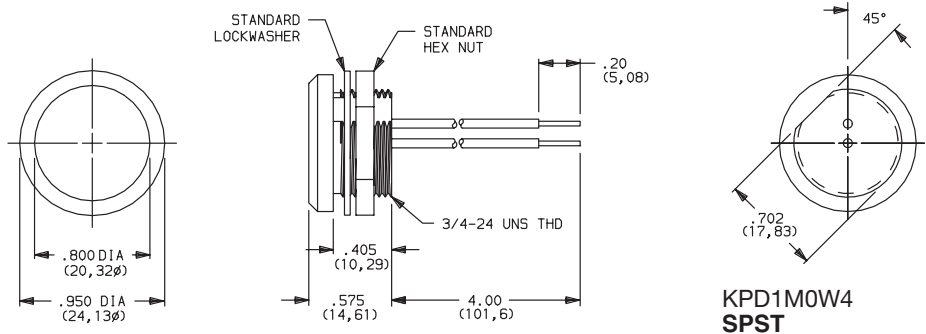
A
Pushbutton

MODELS

M (Small Aluminum)

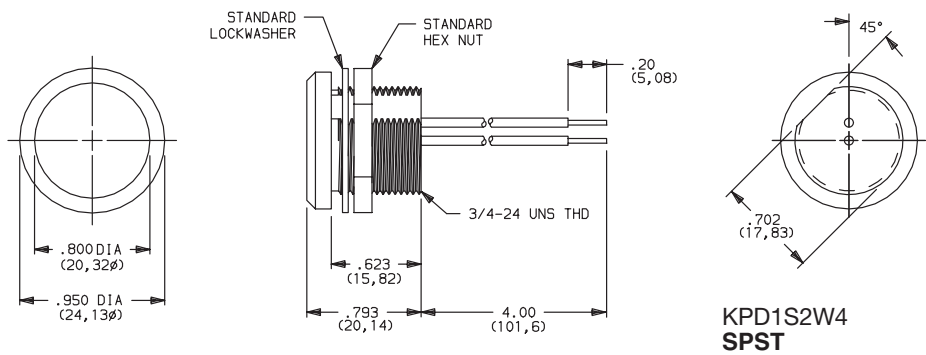
| MODEL NO. | CIRCUIT TYPE | HOUSING COLOR |
|---|--------------|---------------|
| KPD1M0 | DC | NATURAL |
| SPST N.O. MOMENTARY (See schematic page A-84.) | | |

Metal housing of 'M' Small Aluminum Model should be grounded.

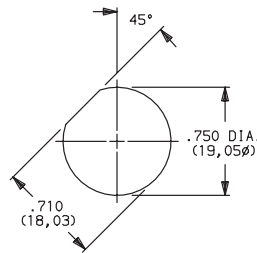


S (Small Plastic)

| MODEL NO. | CIRCUIT TYPE | HOUSING COLOR |
|---|--------------|---------------|
| KPD1S1 | DC | WHITE |
| KPD1S2 | DC | BLACK |
| SPST N.O. MOMENTARY (See schematic page A-84.) | | |

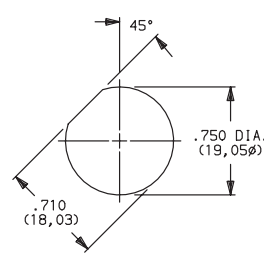


PANEL MOUNTING



M Models

Panel thickness: .200 (5,80) max.

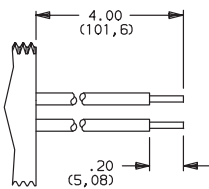


S Models

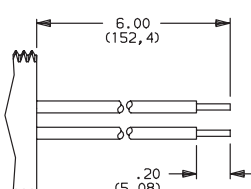
Panel thickness: .350 (8,89) max.

TERMINATIONS

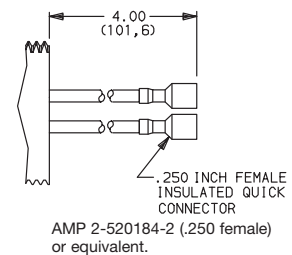
W4P 4" WIRE LEAD, .20 SKIP
W4 4" WIRE LEAD, .20 STRIP



W6P 6" WIRE LEAD, .20 SKIP
W6 6" WIRE LEAD, .20 STRIP

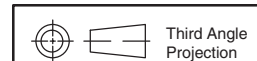


Y4P 4" WIRE LEAD WITH .250" FEMALE
INSULATED QUICK CONNECTOR
Y4 4" WIRE LEAD WITH .250" FEMALE
INSULATED QUICK CONNECTOR



NOTE: Standard wire leads are 22 AWG. Red positive lead, violet negative lead. Other colors, lengths and gauge available, consult Customer Service Center.

W4P, W6P or Y4P options are RoHS compliant and compatible.



Dimensions are shown: Inches (mm)
Specifications and dimensions subject to change



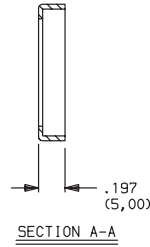
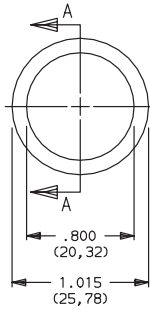
C&K KP Series Piezo Pulse Momentary Pushbutton Switches

GRAPHIC RETAINING RING



A

Pushbutton



| OPTION CODE | RING COLOR |
|-------------|-----------------|
| NONE | NO GRAPHIC RING |
| 2 | BLACK |

Other colors available, consult Customer Service Center.

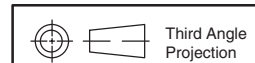
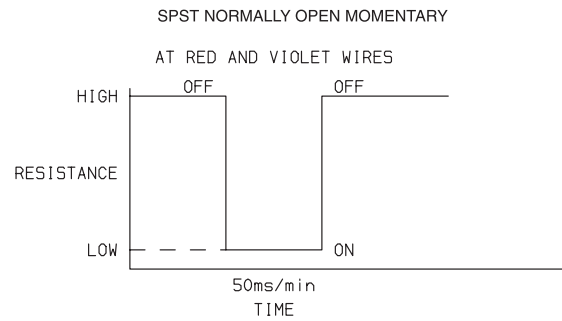
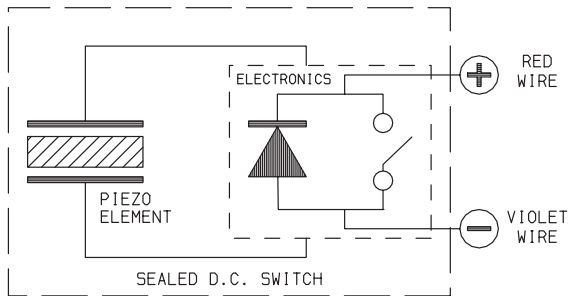
KPD1S2Y4P2
SPST

RING SIMPLY SNAPS ON—HOLDS GRAPHIC IN POSITION, OR CAN BE USED ALONE AS DECORATIVE TRIM RING.

NOTE: Graphic may be installed by customer or C&K, consult Customer Service Center

SCHEMATICS:

DC- KPD1 MODEL



Dimensions are shown: Inches (mm)
Specifications and dimensions subject to change