



Chipsmall Limited consists of a professional team with an average of over 10 year of expertise in the distribution of electronic components. Based in Hongkong, we have already established firm and mutual-benefit business relationships with customers from,Europe,America and south Asia,supplying obsolete and hard-to-find components to meet their specific needs.

With the principle of "Quality Parts,Customers Priority,Honest Operation,and Considerate Service",our business mainly focus on the distribution of electronic components. Line cards we deal with include Microchip,ALPS,ROHM,Xilinx,Pulse,ON,Everlight and Freescale. Main products comprise IC,Modules,Potentiometer,IC Socket,Relay,Connector.Our parts cover such applications as commercial,industrial, and automotives areas.

We are looking forward to setting up business relationship with you and hope to provide you with the best service and solution. Let us make a better world for our industry!



Contact us

Tel: +86-755-8981 8866 Fax: +86-755-8427 6832

Email & Skype: info@chipsmall.com Web: www.chipsmall.com

Address: A1208, Overseas Decoration Building, #122 Zhenhua RD., Futian, Shenzhen, China



KSM Series Side Actuated Detect Switches



Features/Benefits

- Low profile – 1,5 mm
- Momentary, normally closed contact
- Gold contacts
- RoHS compliant and compatible

Typical Applications

- Automotive
- Position sensing switch
- Edge card reset switch
- Smart card presence switch detector
- DSL and fiber optic networks

Specifications

FUNCTION: Momentary action

CONTACT TYPE: SPST Normally closed

Mechanical

TRAVEL TO BREAK: KSM1131D LFG 0,35 ± 0,15 mm

KSM6161 LFG 0,5 ± 0,20 mm

TOTAL TRAVEL: KSM1131D LFG 1,25 ± 0,2 mm

KSM6161 LFG 1,92 ± 0,2 mm

SWITCHING FORCE:

KSM1131D LFG 0,15N ≤ F_{ce} ≤ 0,90 N

KSM6161 LFG 0,50N ≤ F_{ce} ≤ 0,90 N

OPERATING LIFE: KSM1131D LFG 50,000 cycles

KSM6161 LFG 200,000 cycles

Packaging

Switches are delivered on continuous tape, in reels of 2,000 pieces (KSM1131D LFG) and 1250 pieces (KSM6161 LFG)

Electrical

MAXIMUM POWER: 0.2 VA

MAXIMUM VOLTAGE: 24 VDC

MINIMUM VOLTAGE: 20 mV

MAXIMUM CURRENT DC: 50 mA

MINIMUM CURRENT DC: 1 mA

CONTACT RESISTANCE: ≤ 300 mΩ

INSULATION RESISTANCE: ≥ 10⁹ Ω

DIELECTRIC STRENGTH: ≥ 250 Vrms

BOUNCE TIME: ≤ 10 ms

KSM1131D LFG

0.2 VA

24 VDC

20 mV

50 mA

1 mA

≤ 300 mΩ

≥ 10⁹ Ω

≥ 250 Vrms

≤ 10 ms

KSM6161 LFG

1.0 VA

32 VDC

20 mV

50 mA

≤ 900 mΩ

≥ 10⁹

≥ 250 Vrms

≤ 1,25 ms

Environmental

OPERATING TEMPERATURE: -40°C to +85°C

STORAGE TEMPERATURE: -55°C to +85°C

Process

SOLDERING: Compatible with lead free reflow process

NOTE: Specifications listed above are for switches with standard options. For information on specific and custom switches, consult Customer Service Center.

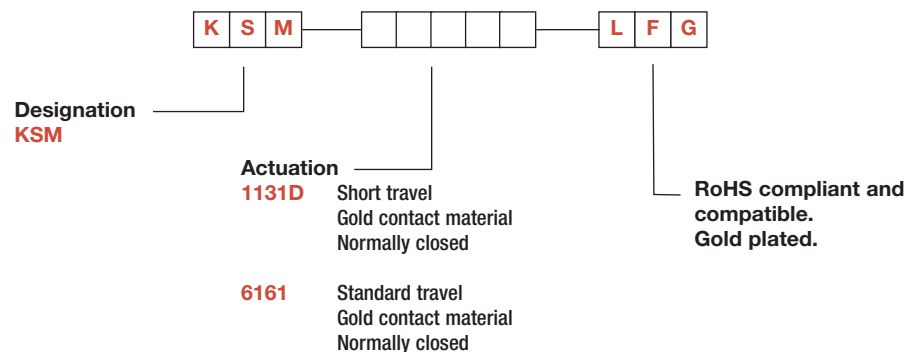
How To Order

Our easy build-a-switch concept allows you to mix and match options to create the switch you need. To order, select desired option from each category and place it in the appropriate box.

For any part number different from those listed above, please consult your local representative.



Detect



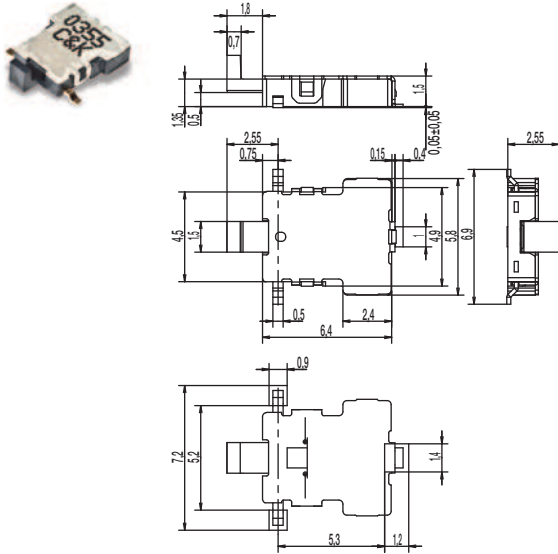
First Angle
Projection

Dimensions are shown: mm
Specifications and dimensions subject to change

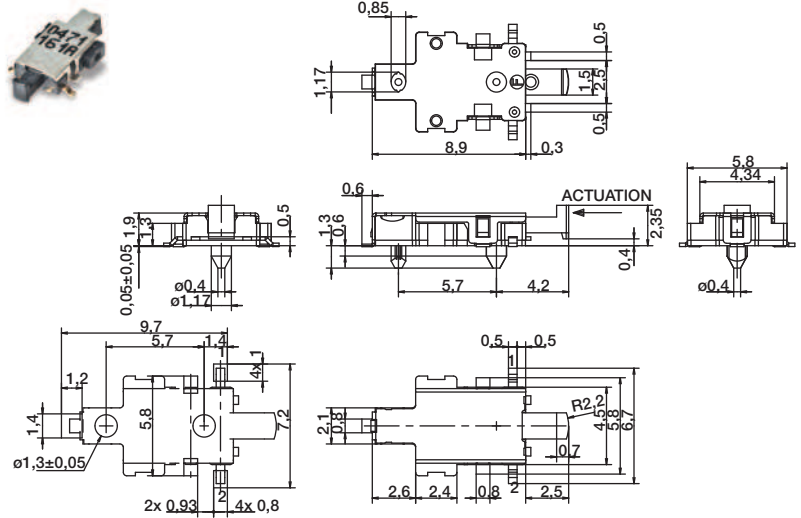


KSM Series Side Actuated Detect Switches

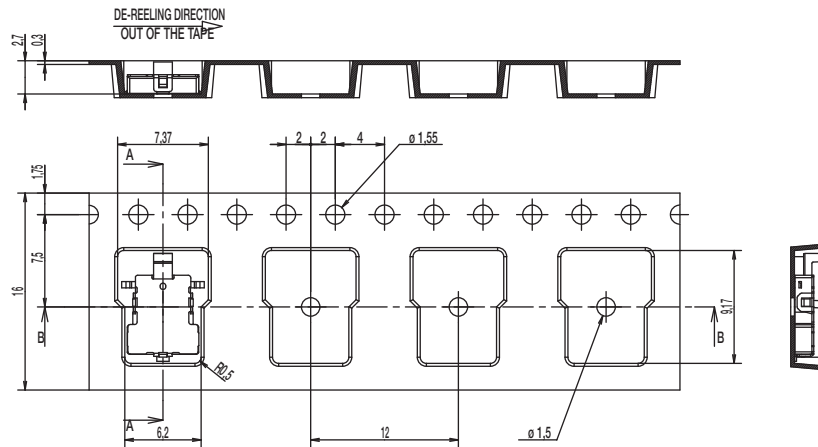
KSM1131D LFG



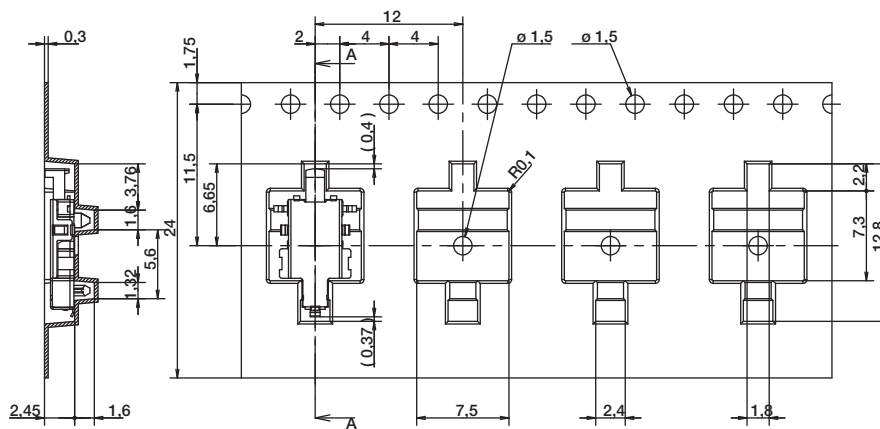
KSM6161 LFG



KSM1131D LFG



KSM6161 LFG



Detect



First Angle Projection
Specifications and dimensions subject to change

