



Chipsmall Limited consists of a professional team with an average of over 10 year of expertise in the distribution of electronic components. Based in Hongkong, we have already established firm and mutual-benefit business relationships with customers from,Europe,America and south Asia,supplying obsolete and hard-to-find components to meet their specific needs.

With the principle of “Quality Parts,Customers Priority,Honest Operation,and Considerate Service”,our business mainly focus on the distribution of electronic components. Line cards we deal with include Microchip,ALPS,ROHM,Xilinx,Pulse,ON,Everlight and Freescale. Main products comprise IC,Modules,Potentiometer,IC Socket,Relay,Connector.Our parts cover such applications as commercial,industrial, and automotives areas.

We are looking forward to setting up business relationship with you and hope to provide you with the best service and solution. Let us make a better world for our industry!



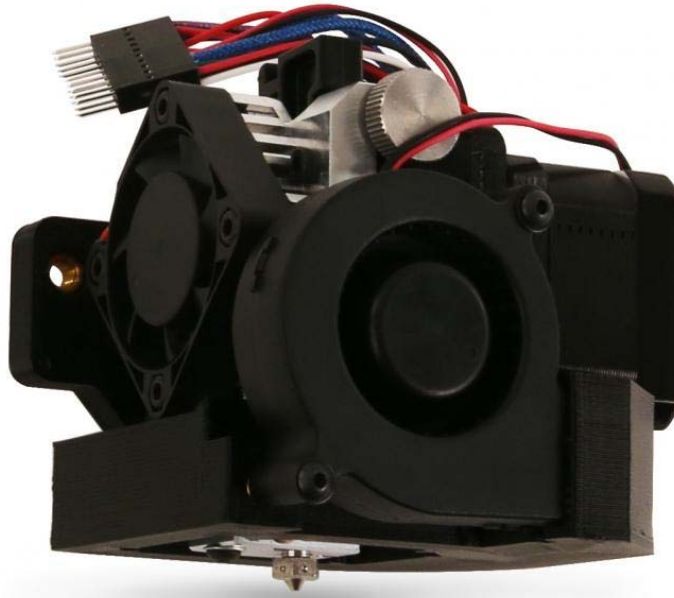
Contact us

Tel: +86-755-8981 8866 Fax: +86-755-8427 6832

Email & Skype: info@chipsmall.com Web: www.chipsmall.com

Address: A1208, Overseas Decoration Building, #122 Zhenhua RD., Futian, Shenzhen, China





Suited for Intermediate Users

LulzBot Mini Aerostruder Tool Head

Precision and versatility come together in the LulzBot Mini Aerostruder Tool Head, featuring the popular Titan Aero hot end and extruder from E3D. This tool head mounts quickly and easily to your LulzBot Mini 3D Printer and incorporates a powerful centrifugal fan and 360-degree part cooling for excellent fine detail, bridging, and overhang performance. The Aerostruder prints both rigid and flexible filaments with ease making it a great choice for users that change filament types often. Lightweight, compact, precision-machined extruder components provide accuracy and consistency print after print.

PRODUCT ALERT (1)

Your New Tool Head Deserves New Firmware:

Get the latest slicing profiles, firmware, and more by upgrading to [Cura LulzBot Edition v2.6.66](#).

Works with: LulzBot Mini

Features

The LulzBot Mini Aerostruder Tool Head features the popular Titan Aero extruder/hot end from E3D. The genuine 0.50 mm E3D nozzle and precision-machined components enable rapid printing in fine detail with both rigid and flexible filaments. A high output centrifugal fan and quad-port cooling duct support elaborate prints with extensive bridging, cooling filament in 360-degrees before it has time to sag between points. Lightweight and compact, the Aerostruder connects to your LulzBot Mini 3D Printer quickly and easily with high quality, smooth printing capability.

Parts & Specifications

Parts Included

- (1) LulzBot Mini Aerostruder Tool Head (Fully Assembled)
- (1) PVA gluestick 0.77 oz
- (1) Metrix hex keys (2.5 mm, 4.0 mm)

Specifications

Required filament diameter: 2.85 mm diameter (3 mm)

Hot end temperature range: 140°C - 300°C

Nozzle diameter: 0.5 mm

Required power system: 24 Volts

Fans: (1) 5v 40 mm axial fan, and (1) 24v centrifugal fan

Weight: 457.8 g (1.01 lbs)