



Chipsmall Limited consists of a professional team with an average of over 10 year of expertise in the distribution of electronic components. Based in Hongkong, we have already established firm and mutual-benefit business relationships with customers from,Europe,America and south Asia,supplying obsolete and hard-to-find components to meet their specific needs.

With the principle of "Quality Parts,Customers Priority,Honest Operation,and Considerate Service",our business mainly focus on the distribution of electronic components. Line cards we deal with include Microchip,ALPS,ROHM,Xilinx,Pulse,ON,Everlight and Freescale. Main products comprise IC,Modules,Potentiometer,IC Socket,Relay,Connector.Our parts cover such applications as commercial,industrial, and automotives areas.

We are looking forward to setting up business relationship with you and hope to provide you with the best service and solution. Let us make a better world for our industry!



Contact us

Tel: +86-755-8981 8866 Fax: +86-755-8427 6832

Email & Skype: info@chipsmall.com Web: www.chipsmall.com

Address: A1208, Overseas Decoration Building, #122 Zhenhua RD., Futian, Shenzhen, China

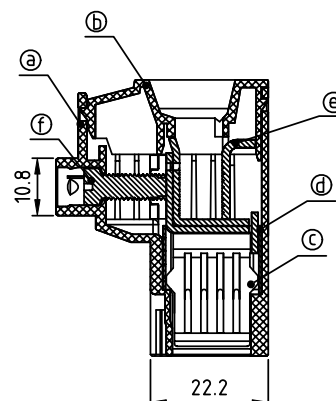
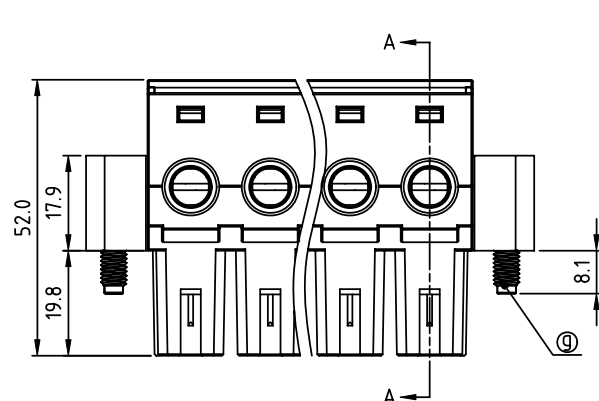


PRODUCT NUMBER

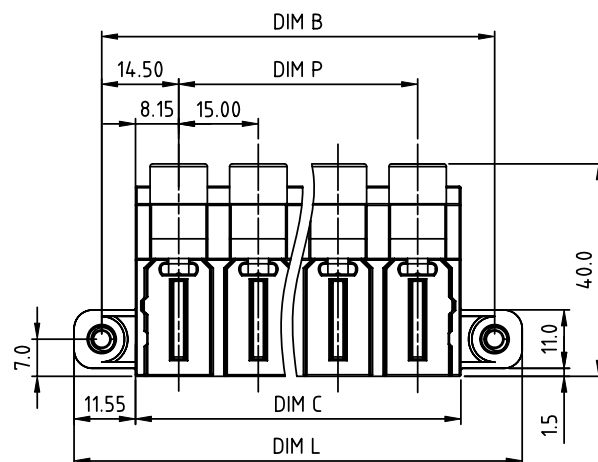
PITCH

KXxxC1x100J0G

15.00 mm



SECTION A-A



N=Number of poles
 DIM L=(N-1)x15.0+39.4
 DIM P=(N-1)x15.0
 DIM B=(N-1)x15.0+29.0
 DIM C=(N-1)x15.0+16.3

poles	Tolerance
2-4p	±0.20
5-7p	±0.35
8-10p	±0.50

PART NO.: KX xx C 1 x 1 00J0 G

Solid block
 No. of poles
 02 2 poles
 03 3 poles
 ...
 10 10 poles

Color
 0 Black (RAL9005)
 2 Red (RAL3001/D)
 3 Orange(RAL2011/P)
 4 Yellow(RAL1018/A)
 5 Green(RAL6018/T)
 6 Blue (RAL5015/A)
 8 Grey(RAL7035/D)
 9 White(RAL1102)
 C Green(RAL6018/U)

RoHS compliant
 (lead<4%)
 In copper Alloy

Material:

- Item① Terminal housing: Thermoplastic (UL94V-0)
- Item② Terminal cover: Thermoplastic (UL94V-0)
- Item③ Female contact : Copper. Tin plated
- Item④ Wire guard : Stainless Steel
- Item⑤ Clamp: Steel Stamping , Zinc plated
- Item⑥ Terminal screw: Steel, Zinc plating"-slot type,M5
- Item⑦ With flange screw: Steel, Zinc plating"*pozi type,M5

Electrical:

- cULus
- Voltage rating: 600 V
- Current rating: 115 A
- Wire range:
- Solid wire(AWG): 2-20
- Stranded wire(AWG): 2-20
- Torque(Lb-In): 36.5
- Screw: M5
- Wire strip length: 19-20mm
- Withstanding Voltage: 2.2 KV
- Operating temperature: -40°C to +115°C
- Safety Approval: cULus

mat'l. code				surface ASME Y14.5	tolerance ASME Y14.5	projection	product family			
ltr	ecn	no	dr	date	tolerances unless otherwise specified		TERMINAL BLOCK			
					angles	X.±0.5	TERMINAL BLOCK PLUGGABLE PLUG,WITH FLANGE			
					±0.1	X.X±0.3				
					X'±1"	X.XX±0.1	scale			
					dr	EVIN ZHONG 051214	FCI			
					enr	EVIN ZHONG 051214				
					chr	HANKE FENG 051214				
					appd	SHI JUN 051214				
sheet	revision	A					dwg no			
index	sheet	1					KXxxC1x100J0G			
							sheet 1 of 1			
							size			
							A4			
							type			
							CUSTOMER Drawing			