



Chipsmall Limited consists of a professional team with an average of over 10 year of expertise in the distribution of electronic components. Based in Hongkong, we have already established firm and mutual-benefit business relationships with customers from,Europe,America and south Asia,supplying obsolete and hard-to-find components to meet their specific needs.

With the principle of "Quality Parts,Customers Priority,Honest Operation,and Considerate Service",our business mainly focus on the distribution of electronic components. Line cards we deal with include Microchip,ALPS,ROHM,Xilinx,Pulse,ON,Everlight and Freescale. Main products comprise IC,Modules,Potentiometer,IC Socket,Relay,Connector.Our parts cover such applications as commercial,industrial, and automotives areas.

We are looking forward to setting up business relationship with you and hope to provide you with the best service and solution. Let us make a better world for our industry!



Contact us

Tel: +86-755-8981 8866 Fax: +86-755-8427 6832

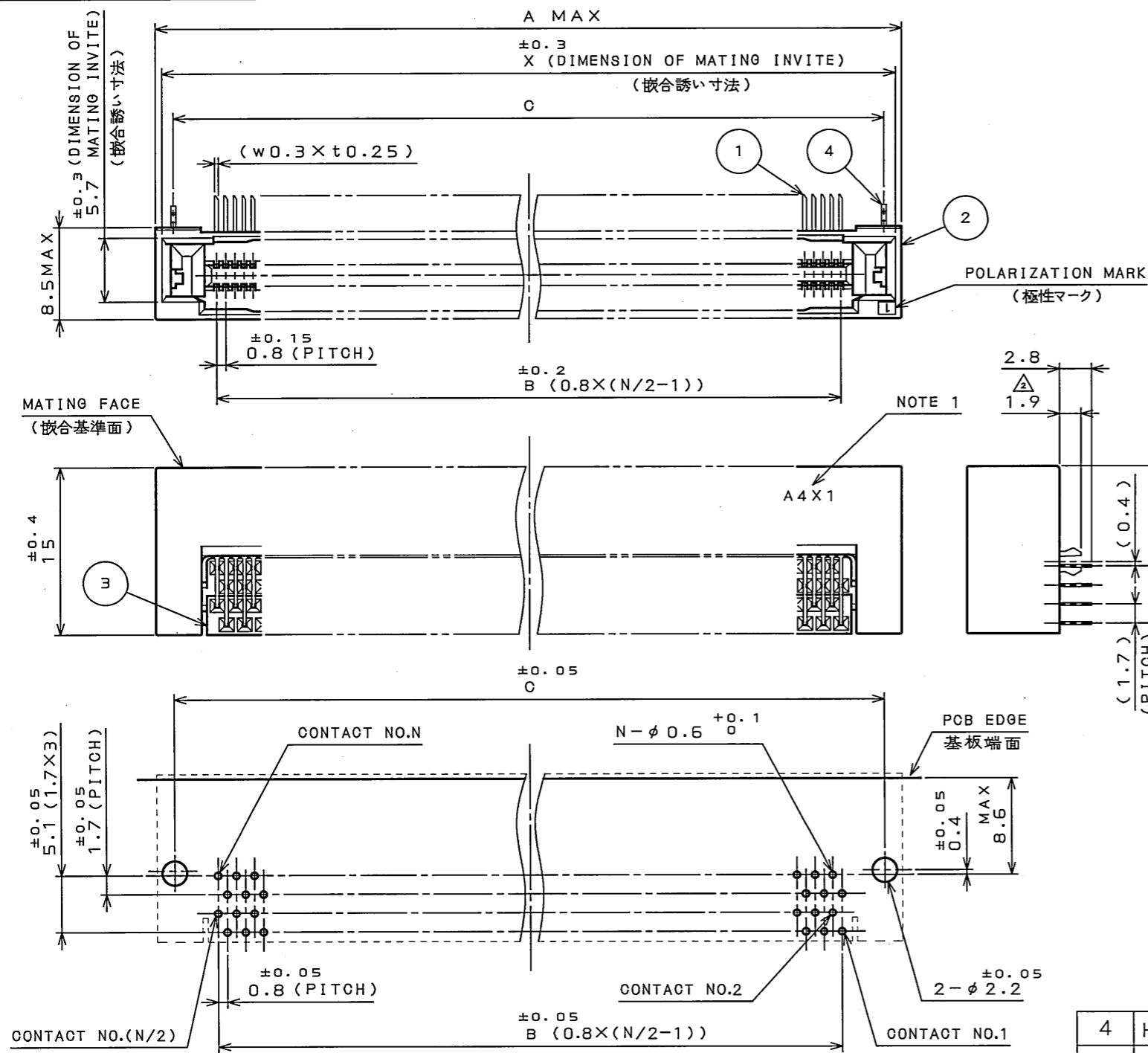
Email & Skype: info@chipsmall.com Web: www.chipsmall.com

Address: A1208, Overseas Decoration Building, #122 Zhenhua RD., Futian, Shenzhen, China



98E10138E
(ON ΘIMVARD) 台裏理図

版数 REV.	年月日 DATE	DCN NO.	変更内容 DESCRIPTION	製図 DR.	担当 CHK.	査閲 APPD.	承認 APPD.
2	28.Mar.2005	057035	REVISED DIMENSION, ETC.	—	M.KIMURA	—	S.KASHIWA01
3	25.Aug.2005	058100	CORRECT AN ERROR	—	M.KIMURA	—	K.HISATOMI
4	7.Dec.2006	061786	ADDED ITEM	—	M.KIMURA	—	Y.YAHIRO



P.C.B. HOLE PATTERNS (REF.)
基板取付寸法 (参考)

TABLE 1

CONTACT AREA 接触部	GOLD (0.1μm MIN) OVER NICKEL Ni上Au (0.1μm以上)めっき
TERMINAL AREA 端子部	TIN (REFLOW) OVER NICKEL Ni上リフロー-Snめっき

TABLE 2 Δ

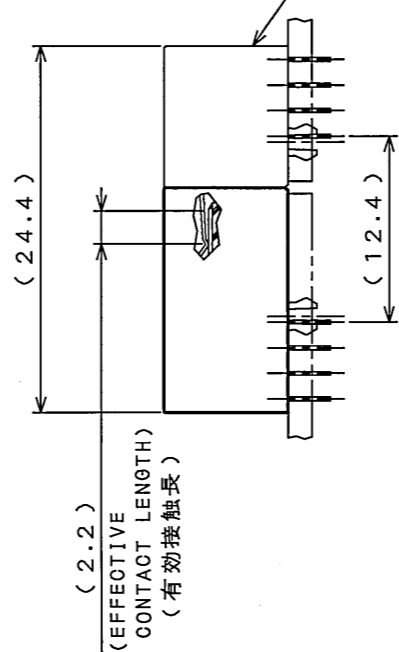
NUMBER OF CONTACTS 芯数: N	DIMENSION 寸法			
	A	B	C	X
80	42.2	31.2	38.8	40.8
100	50.2	39.2	46.8	48.8
120	58.2	47.2	54.8	56.8
140	66.2	55.2	62.8	64.8
180	82.2	71.2	78.8	80.8

DESIGNATION
命名法

KX25-***P-LT-H1

SERIES シリーズ名	CONTACT AREA GOLD PLATE THICKNESS 1: GOLD (0.1μm MIN) 接触部Auめっき厚 1: Au0.1μm以上
NUMBER OF CONTACTS 芯数	
CONTACT TYPE P: PIN コンタクトタイプ P: ピン	H: WITH HOOK PIN H: フックピン有り
TERMINATION STYLE LT: RIGHT-ANGLE THROUGH HOLE 端子形状 LT: ライトアング ル スルーホール	

APPLICABLE TYPICAL CONNECTOR
適合コネクタ (代表)
(KX24-***R-LT-H1)



MATED CONDITION (REF.)
嵌合状態図 (参考)

- NOTE 1. PRODUCTION LOT NUMBER AS INDICATED.
2. DIRECTION OF CUTTING EDGE OF CONTACTS TERMINAL IS OPTIONAL. BUT, IN THE CONNECTOR, IT MUST FACE THE SAME SIDE.

注1. 図示の面にロット番号を表示する。

(EX.)

A 4 X 1	LOT NUMBER OF CURRENT MONTH 当月の生産ロットを示す
	MONTH (RESPECTIVELY, OCT.:0, NOV.:X, DEC.:Y) 月表示 (10月:0, 11月:X, 12月:Y)
	YEAR (LAST DIGIT ONLY) 年表示 (西暦末尾)
	PRODUCT CODE 製造コード

2. コンタクト端子部先端の斜め切断の向きは任意とする。但しコネクタ内では同一の向きである。

符号 NO.	名称 DESCRIPTION	個数 QTY.	材料 MATERIAL	仕上 FINISH	備考 REMARKS
4	HOOK PIN	2	COPPER ALLOY	TIN (REFLOW)	
3	LOCATOR	1	GLASS FILLED PBT		UL94 V-0 BLACK
2	INSULATOR	1	GLASS FILLED PBT		UL94 V-0 BLACK
1	CONTACT	N	COPPER ALLOY	TABLE 1	

仕様書 (SPECIFICATION)	第1版 (ORIGINAL DATE) 8.Nov.2004	尺度 (SCALE) 2:1	シリーズ (SERIES) KX25	日本航空電子工業株式会社 JAPAN AVIATION ELECTRONICS INDUSTRY, LTD. 図面番号 (DRAWING NO.) SJ10138E 版数 (REV.) 4
JACS-10201-*	製図 DR.	名称 (TITLE) KX25-***P-LT-H1		
公差 (GENERAL TOLERANCE)	担当 CHK. M.KIMURA			
寸法 (DIMENSION) 角度 (ANGLES)	査閲 APPD. 承認 APPD. S.KASHIWA01			

DOF-0-212E(03.08)

