



Chipsmall Limited consists of a professional team with an average of over 10 year of expertise in the distribution of electronic components. Based in Hongkong, we have already established firm and mutual-benefit business relationships with customers from,Europe,America and south Asia,supplying obsolete and hard-to-find components to meet their specific needs.

With the principle of “Quality Parts,Customers Priority,Honest Operation,and Considerate Service”,our business mainly focus on the distribution of electronic components. Line cards we deal with include Microchip,ALPS,ROHM,Xilinx,Pulse,ON,Everlight and Freescale. Main products comprise IC,Modules,Potentiometer,IC Socket,Relay,Connector.Our parts cover such applications as commercial,industrial, and automotives areas.

We are looking forward to setting up business relationship with you and hope to provide you with the best service and solution. Let us make a better world for our industry!



## Contact us

Tel: +86-755-8981 8866 Fax: +86-755-8427 6832

Email & Skype: info@chipsmall.com Web: www.chipsmall.com

Address: A1208, Overseas Decoration Building, #122 Zhenhua RD., Futian, Shenzhen, China



THIS DRAWING IS UNPUBLISHED.

RELEASED FOR PUBLICATION

© COPYRIGHT - By -

ALL RIGHTS RESERVED.

LOC FT DIST 0

REVISIONS

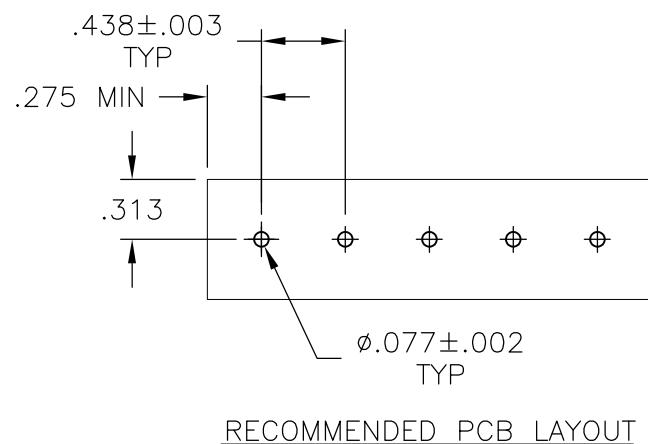
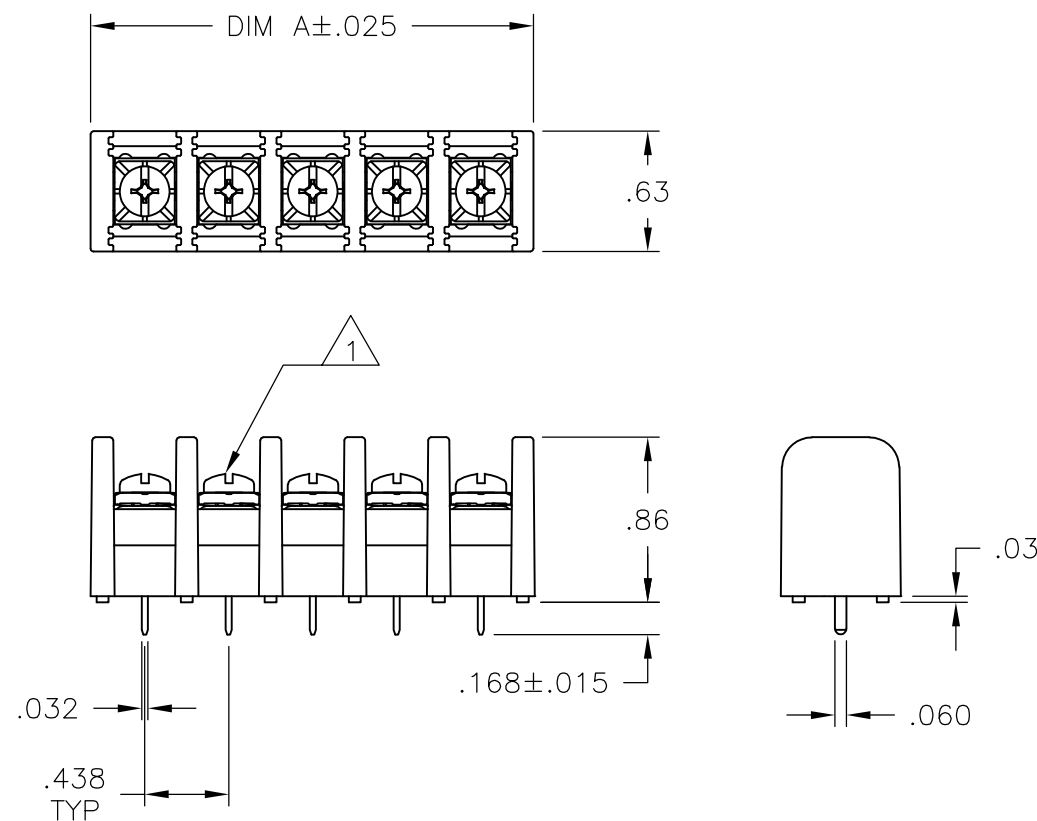
P	LTR	DESCRIPTION	DATE	DWN	APVD
B		REVISED PER ECO-11-023039	20FEB12	KH	MS

MATERIAL:  
 HOUSING: THERMOPLASTIC, UL94V-2, BLACK.  
 TERMINAL: BRASS, BRIGHT TIN PLATED.  
 SCREWS: 6-32, STEEL, ZINC AND CHROMATE PLATED.

ELECTRICAL:  
 MAXIMUM CURRENT: 20A.  
 OPERATING VOLTAGE: 600V.  
 WIRE RANGE: 12 AWG MAX.

ENVIRONMENT:  
 OPERATING TEMP.: -60°C TO +105°C.

1 ALL SCREWS BOTTOMED, TORQUE 2 TO 4 IN-LBS



DIM A	NO. OF POS.	CATALOG NUMBER	PART NUMBER
11.937	27	SSB7RP270202	2-1546974-7
11.500	26	SSB7RP260202	2-1546974-6
11.062	25	SSB7RP250202	2-1546974-5
10.625	24	SSB7RP240202	2-1546974-4
10.187	23	SSB7RP230202	2-1546974-3
9.750	22	SSB7RP220202	2-1546974-2
9.312	21	SSB7RP210202	2-1546974-1
8.875	20	SSB7RP200202	2-1546974-0
8.437	19	SSB7RP190202	1-1546974-9
8.000	18	SSB7RP180202	1-1546974-8
7.562	17	SSB7RP170202	1-1546974-7
7.125	16	SSB7RP160202	1-1546974-6
6.687	15	SSB7RP150202	1-1546974-5
6.250	14	SSB7RP140202	1-1546974-4
5.812	13	SSB7RP130202	1-1546974-3
5.375	12	SSB7RP120202	7-1437416-0
4.937	11	SSB7RP110202	1-1546974-1
4.500	10	SSB7RP100202	1-1546974-0
4.062	9	SSB7RP090202	6-1437416-9
3.625	8	SSB7RP080202	6-1437416-8
3.187	7	SSB7RP070202	3-1546561-4
2.750	6	SSB7RP060202	1546974-6
2.312	5	SSB7RP050202	6-1437416-6
1.875	4	SSB7RP040202	1546974-4
1.437	3	SSB7RP030209	2-1546561-3
1.437	3	SSB7RP030202	1546974-3
1.000	2	SSB7RP020209	2-1546561-2
1.000	2	SSB7RP020202	5-1437416-9

THIS DRAWING IS A CONTROLLED DOCUMENT.		DWN S SCHL GEL 3/3/04	<b>STE</b> TE Connectivity	
DIMENSIONS: INCHES		CHK S YODER 3/3/04		
TOLERANCES UNLESS OTHERWISE SPECIFIED:		APVD S YODER 3/3/04	NAME	
0 PLC ± -		PRODUCT SPEC	SSB7RPXX0202	
1 PLC ± -		APPLICATION SPEC	RESTRICTED TO	
2 PLC ± .02		WEIGHT -	SIZE A3	CAGE CODE 00779
3 PLC ± .010		CUSTOMER DRAWING	DRAWING NO C-5-1437416-9	
4 PLC ANGLES ± 1°			SCALE NTS	SHEET 1 OF 1
MATERIAL -				
FINISH -				