



Chipsmall Limited consists of a professional team with an average of over 10 year of expertise in the distribution of electronic components. Based in Hongkong, we have already established firm and mutual-benefit business relationships with customers from,Europe,America and south Asia,supplying obsolete and hard-to-find components to meet their specific needs.

With the principle of "Quality Parts,Customers Priority,Honest Operation,and Considerate Service",our business mainly focus on the distribution of electronic components. Line cards we deal with include Microchip,ALPS,ROHM,Xilinx,Pulse,ON,Everlight and Freescale. Main products comprise IC,Modules,Potentiometer,IC Socket,Relay,Connector.Our parts cover such applications as commercial,industrial, and automotives areas.

We are looking forward to setting up business relationship with you and hope to provide you with the best service and solution. Let us make a better world for our industry!



Contact us

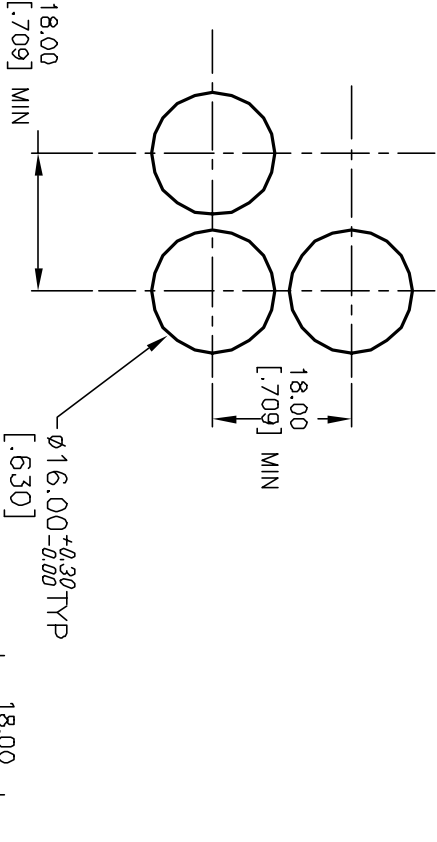
Tel: +86-755-8981 8866 Fax: +86-755-8427 6832

Email & Skype: info@chipsmall.com Web: www.chipsmall.com

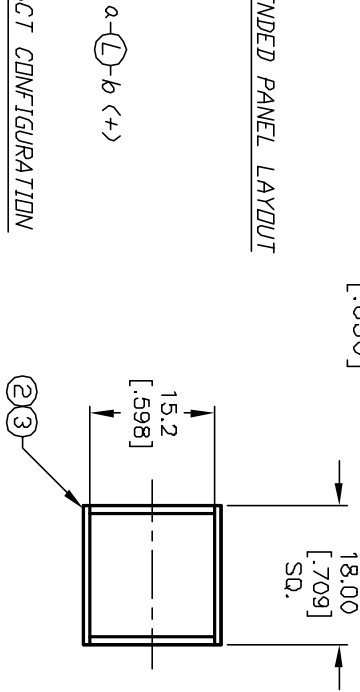
Address: A1208, Overseas Decoration Building, #122 Zhenhua RD., Futian, Shenzhen, China



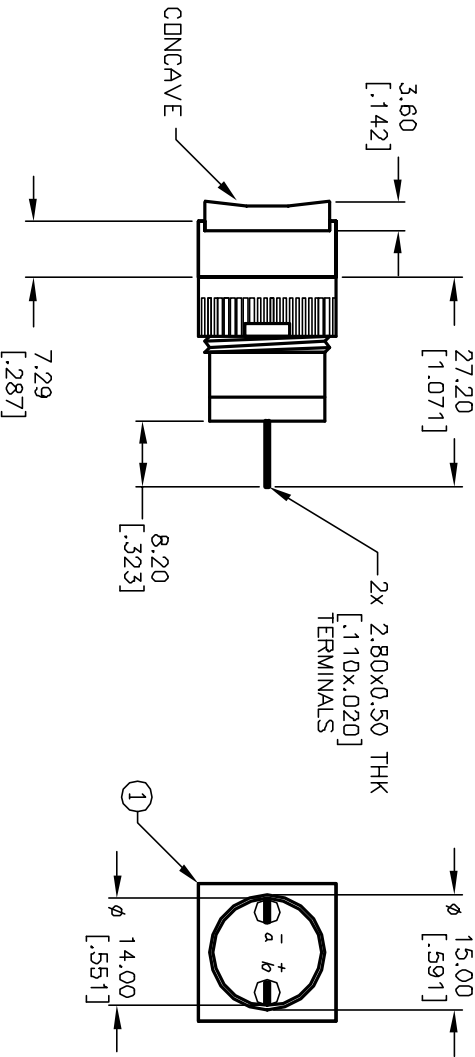
Item	Qty.	Dwg. No.	Part No.
1	1	F040002	L16 PLS10
2	1	F050404	50-004-04
3	1	F050304	50-003-04 RED LENS TRANSPARENT



RECOMMENDED PANEL LAYOUT



CONTACT CONFIGURATION



NOTES:

1. ALL DIMENSIONS IN MM [INCH]
2. GENERAL TOLERANCE: X.X=±0.4
X.XX=±0.25
3. TERM. NOS. FOR REFERENCE ONLY.
4. RATING: 5A @250V AC
8A @125V AC
5. LAMP VOLTAGE: 14VAC/DC 80mA DC LED
6. MECHANICAL LIFETIME: >2 MILLION OPERATIONS
7. CONTACT MATERIAL: COPPER ALLOY W/SILVER PLATING

E-SWITCH®			
TITLE			
L16 PL S10 B RED			
SCALE 1:1			
DATE -- --			
DR --			
DWG XF0108P			
REV A			