



Chipsmall Limited consists of a professional team with an average of over 10 year of expertise in the distribution of electronic components. Based in Hongkong, we have already established firm and mutual-benefit business relationships with customers from,Europe,America and south Asia,supplying obsolete and hard-to-find components to meet their specific needs.

With the principle of “Quality Parts,Customers Priority,Honest Operation,and Considerate Service”,our business mainly focus on the distribution of electronic components. Line cards we deal with include Microchip,ALPS,ROHM,Xilinx,Pulse,ON,Everlight and Freescale. Main products comprise IC,Modules,Potentiometer,IC Socket,Relay,Connector.Our parts cover such applications as commercial,industrial, and automotives areas.

We are looking forward to setting up business relationship with you and hope to provide you with the best service and solution. Let us make a better world for our industry!



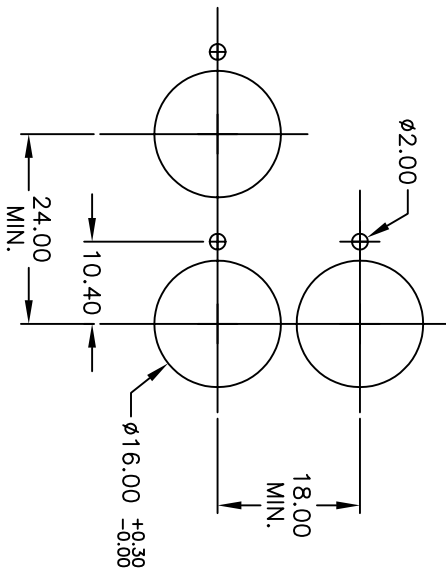
Contact us

Tel: +86-755-8981 8866 Fax: +86-755-8427 6832

Email & Skype: info@chipsmall.com Web: www.chipsmall.com

Address: A1208, Overseas Decoration Building, #122 Zhenhua RD., Futian, Shenzhen, China





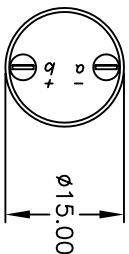
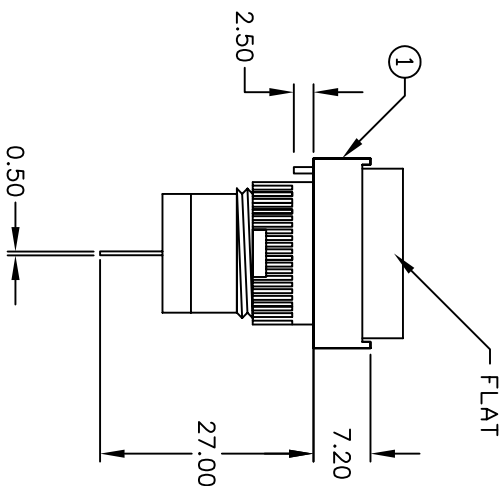
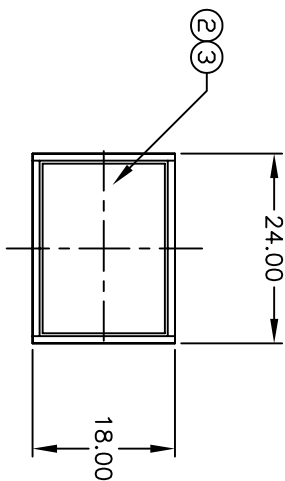
RECOMMENDED PANEL MOUNTING
SCALE 1:1

a-L-b (+)

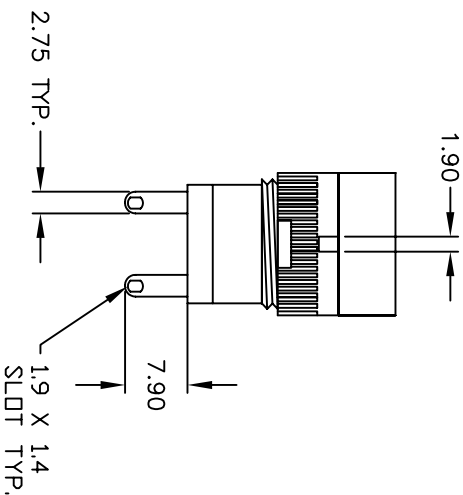
NOTES:

1. ALL DIMENSIONS IN MM
2. GENERAL TOLERANCE: X.X=±0.4
X.XX=±0.25
3. RATINGS: 1A, 2A, 4A, 5A @250V AC
24V DC LED
4. CONTACT MATERIAL: COPPER ALLOY W/Silver Plating

CIRCUIT: PILOT INDICATOR



PARTS LIST			
ITEM	QTY.	PART NO.	PART DESCRIPTION
1	1	F040001	L16 PL T1 00
2	1	F050423	50-004-23 (RED LED)
3	1	F050214	50-002-14 (RED lens)



E-SWITCH®

L16 PL T10 K RED RED
TRANSPARENT/FLAT LENS

REV.	ECN NO.	DESCRIPTION	DATE	CHKD
B	15604	EDIT LED VOLTAGE	12/14/05	PH
A	11561	RELEASE FOR PRODUCTION	2/27/03	CJB

TITLE	SCALE	DATE	DR	DWG	REV
L16 PL T10 K RED RED TRANSPARENT/FLAT LENS	1:1	2/27/03	CJB	XF0062P	B

THE INFORMATION CONTAINED IN THIS DOCUMENT IS PROPRIETARY TO E-SWITCH AND IS NOT TO BE COPIED OR TRANSFERRED