



Chipsmall Limited consists of a professional team with an average of over 10 year of expertise in the distribution of electronic components. Based in Hongkong, we have already established firm and mutual-benefit business relationships with customers from,Europe,America and south Asia,supplying obsolete and hard-to-find components to meet their specific needs.

With the principle of "Quality Parts,Customers Priority,Honest Operation,and Considerate Service",our business mainly focus on the distribution of electronic components. Line cards we deal with include Microchip,ALPS,ROHM,Xilinx,Pulse,ON,Everlight and Freescale. Main products comprise IC,Modules,Potentiometer,IC Socket,Relay,Connector.Our parts cover such applications as commercial,industrial, and automotives areas.

We are looking forward to setting up business relationship with you and hope to provide you with the best service and solution. Let us make a better world for our industry!



Contact us

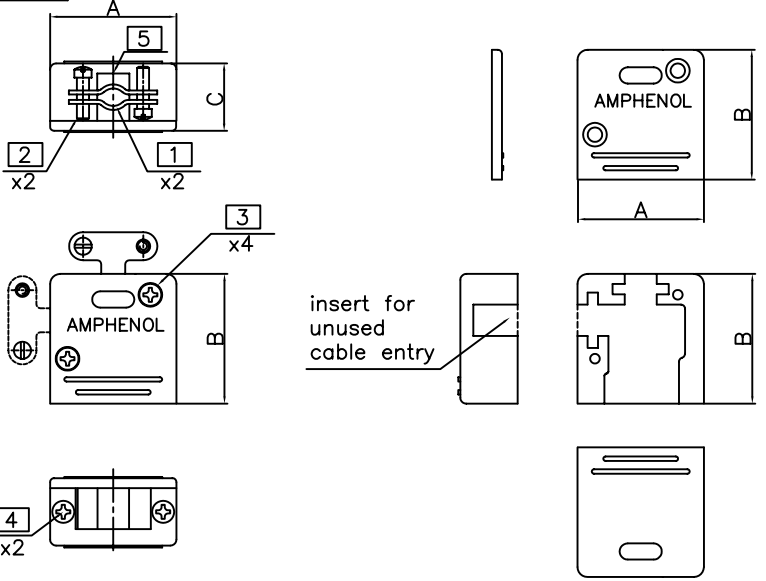
Tel: +86-755-8981 8866 Fax: +86-755-8427 6832

Email & Skype: info@chipsmall.com Web: www.chipsmall.com

Address: A1208, Overseas Decoration Building, #122 Zhenhua RD., Futian, Shenzhen, China

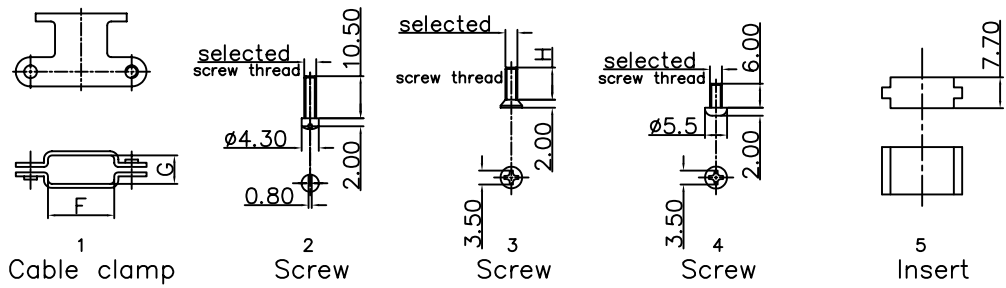


This document is the property of Amphenol Corporation and is delivered on the express condition that it is not to be disclosed, reproduced or used, in whole or in part, for manufacture or sale by anyone other than Amphenol Corporation without its prior consent, & that no right is granted to disclose or to use any information in this document.



09 pos.
Drawing for sub-assembly
L171370

09 pos.
Drawing for side
Plastic shell



Customer drawing

Shell size	Commercial Part Number	Dimension						
		Amax	B	Cmax	Dmax	Emax	Fmax	Gmax
E	L171370	31.5	32.8	16.8	39.6	41.6	6.4	4.6
A	L171371	39.8	38.1	16.8	47.9	46.9	9.5	5.6
B	L171372	53.6	38.1	16.8	61.8	47.0	11.4	7.6
C	L171373	70.0	40.5	16.8	83.1	54.2	16.5	9.1

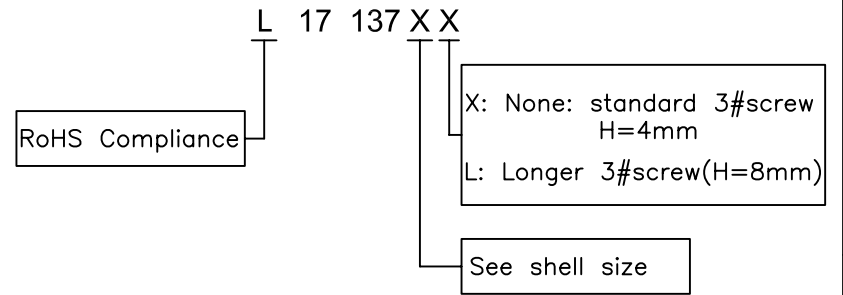


REVISIONS				
SYM	ECN	DESCRIPTION	DATE	APPROVED
1		Release new drawing	12/09/09	IP

D-SUB TECHNICAL DATA

Material and finish:
 Shell: Thermoplastic, UL94-V0 color black
 Screws: Steel, nickel plated, indication of thread
 Should be matched with the plastic shell
 Cable clamp: Steel, nickel plated
 cable clamp with self-tapping screws
 CLIMATIC : Temperature range -30 °C up to 90°C
 MARKING : Amphenol-...(Series No.)
 Commercial reference
 Manufacturing date

PRODUCT CODE

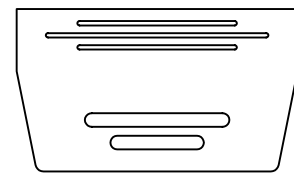
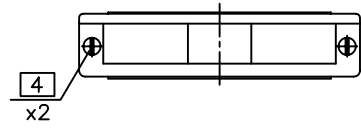
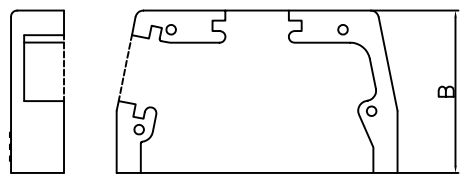
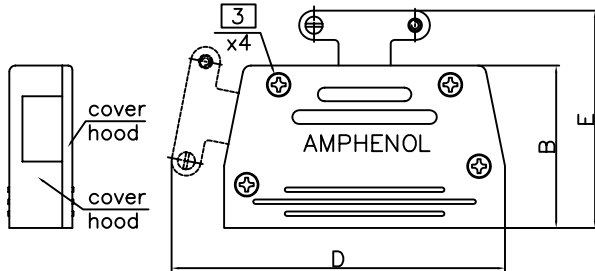
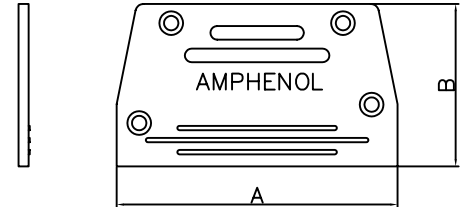
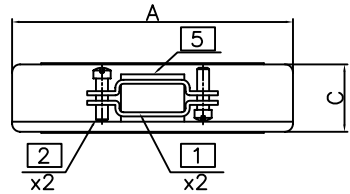


UNLESS OTHERWISE SPECIFIED TOLERANCES		APPROVAL		DATE
U.S.	METRIC	DRAWN	Christine	12/09/09
.X +/-	0.50	CHECKED	tk.wang	12/09/09
.XX +/-	0.30	CHECKED		
.XXX +/-	0.20			
FRACTIONS +/-	5'			
ANGLES +/-				
FOR MATERIALS AND FINISHES SEE NOTES		DRAWING FILE : drawing\Sub\CL17137X		
REMOVE SHARP EDGES		ANGLE OF PROJECTION		
DIMENSIONS				
U.S.	INCHES			
METRIC	MM			

Amphenol		
TITLE Hood, 17 Series		
SIZE	DRAWING NO.	REV.
A4	C L17 137XX	1
SCALE	NONE	SHEET 1 OF 2

This document is the property of Amphenol Corporation and is delivered on the express condition that it is not to be disclosed, reproduced or used, in whole or in part, for manufacture or sale by anyone other than Amphenol Corporation without its prior consent, & that no right is granted to disclose or to use any information in this document.

D
C
B
A



15/25/37 pos.
Drawing for sub-assembly
L171371/L171372/L171373

15/25/37 pos.
Drawing for side
Plastic shell

Customer drawing

Shell size	Commercial Part Number	Dimension						
		Amax	B	Cmax	Dmax	Emax	Fmax	Gmax
E	L171370	31.5	32.8	16.8	39.6	41.6	6.4	4.6
A	L171371	39.8	38.1	16.8	47.9	46.9	9.5	5.6
B	L171372	53.6	38.1	16.8	61.8	47.0	11.4	7.6
C	L171373	70.0	40.5	16.8	83.1	54.2	16.5	9.1



REVISIONS				
SYM	ECN	DESCRIPTION	DATE	APPROVED
1		Release new drawing	12/09/09	IP

D-SUB TECHNICAL DATA

Material and finish:

- Shell: Thermoplastic, UL94-V0 color black
- Screws: Steel, nickel plated, indication of thread
Should be matched with the plastic shell
- Cable clamp: Steel, nickel plated
cable clamp with self-tapping screws
- CLIMATIC : Temperature range -30 °C up to 90°C
- MARKING : Amphenol-...(Series No.)
Commercial reference
Manufacturing date

PRODUCT CODE

L 17 137 X X

RoHS Compliance

X: None: standard 3#screw
H=4mm
L: Longer 3#screw(H=8mm)

See shell size

UNLESS OTHERWISE SPECIFIED TOLERANCES		APPROVAL		DATE
U.S.	METRIC	DRAWN	Christine	12/09/09
.X +/-	0.50	CHECKED	kk.wang	12/09/09
.XX +/-	0.30	CHECKED		
.XXX +/-	0.20			
FRACTIONS +/-				
ANGLES +/-	5'			
FOR MATERIALS AND FINISHES SEE NOTES		DRAWING FILE : drawing\Sub\CL17137X		
REMOVE SHARP EDGES		ANGLE OF PROJECTION		
DIMENSIONS				
U.S.	INCHES			
METRIC	MM			

Amphenol		
TITLE Hood, 17 Series		
SIZE	DRAWING NO.	REV.
A4	C L17 137XX	1
SCALE	NONE	SHEET 2 OF 2

2

1

4

3

↑