



Chipsmall Limited consists of a professional team with an average of over 10 year of expertise in the distribution of electronic components. Based in Hongkong, we have already established firm and mutual-benefit business relationships with customers from,Europe,America and south Asia,supplying obsolete and hard-to-find components to meet their specific needs.

With the principle of “Quality Parts,Customers Priority,Honest Operation,and Considerate Service”,our business mainly focus on the distribution of electronic components. Line cards we deal with include Microchip,ALPS,ROHM,Xilinx,Pulse,ON,Everlight and Freescale. Main products comprise IC,Modules,Potentiometer,IC Socket,Relay,Connector.Our parts cover such applications as commercial,industrial, and automotives areas.

We are looking forward to setting up business relationship with you and hope to provide you with the best service and solution. Let us make a better world for our industry!



Contact us

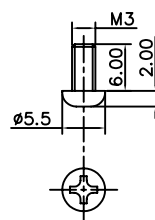
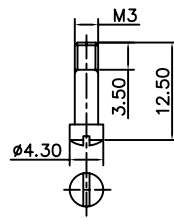
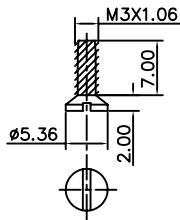
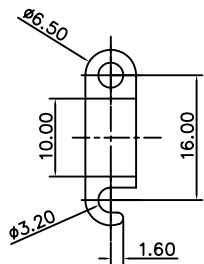
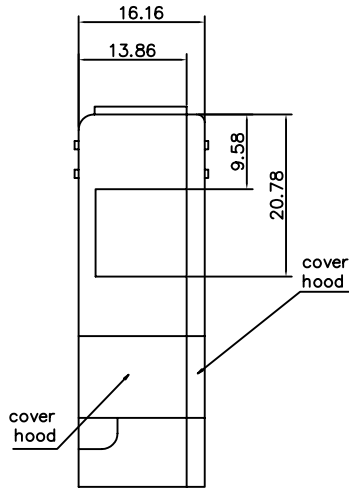
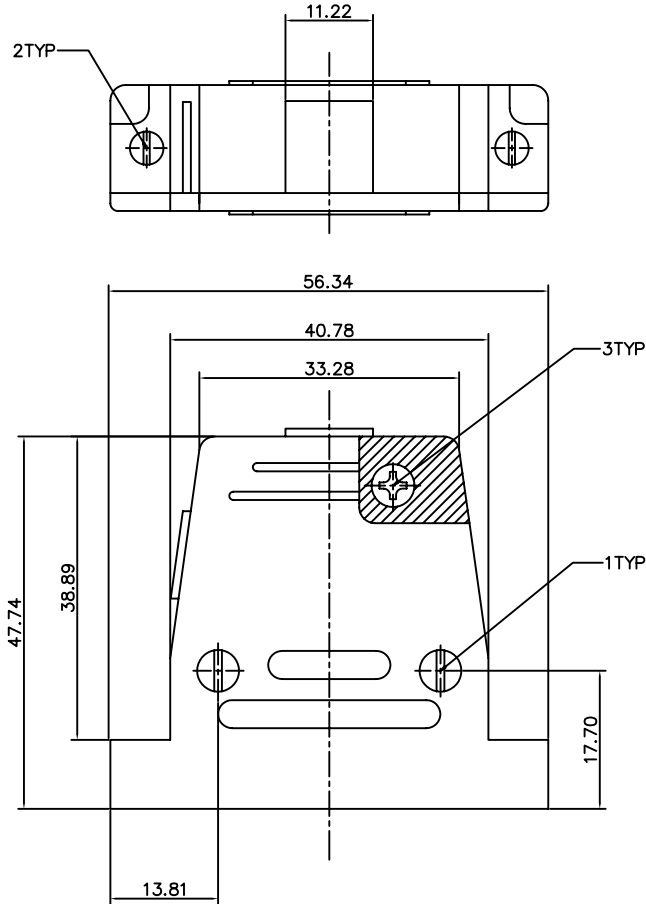
Tel: +86-755-8981 8866 Fax: +86-755-8427 6832

Email & Skype: info@chipsmall.com Web: www.chipsmall.com

Address: A1208, Overseas Decoration Building, #122 Zhenhua RD., Futian, Shenzhen, China



This document is the property of Amphenol Corporation and is delivered on the express condition that it is not to be disclosed, reproduced or used, in whole or in part, for manufacture or sale by anyone other than Amphenol Corporation without its prior consent, & that no right is granted to disclose or to use any information in this document.



1

2

3

REVISIONS				
SYM	ECN	DESCRIPTION	DATE	APPROVED
A			07/03/07	

D-SUB TECHNICAL DATA


Hood, plastic, For 25 positions D-SUB connectors

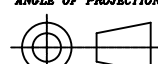
MATERIAL :plastic

CLIMATIC : Temperature range -30 °C up to 90°C

MARKING : Amphenol-...(Series No.)
Commercial reference
Manufacturing date

PRODUCT CODE

ROHS  17158906

UNLESS OTHERWISE SPECIFIED TOLERANCES U.S. METRIC .X +/- 0.50 .XX +/- 0.30 .XXX +/- 0.20 FRACTIONS +/- ANGLES +/- 2° FOR MATERIALS AND FINISHES SEE NOTES REMOVE SHARP EDGES DIMENSIONS U.S. INCHES METRIC MM	APPROVAL	DATE
	DRAWN Helen Jiang	07/03/07
	CHECKED Ma.wang	07/03/07
	CHECKED	
	DRAWING FILE :	
	ANGLE OF PROJECTION	
		

Amphenol		
TITLE hood		
SIZE	DRAWING NO.	REV.
A4	C L17158906	A
SCALE	NONE	SHEET 1 OF 1