



Chipsmall Limited consists of a professional team with an average of over 10 year of expertise in the distribution of electronic components. Based in Hongkong, we have already established firm and mutual-benefit business relationships with customers from,Europe,America and south Asia,supplying obsolete and hard-to-find components to meet their specific needs.

With the principle of “Quality Parts,Customers Priority,Honest Operation,and Considerate Service”,our business mainly focus on the distribution of electronic components. Line cards we deal with include Microchip,ALPS,ROHM,Xilinx,Pulse,ON,Everlight and Freescale. Main products comprise IC,Modules,Potentiometer,IC Socket,Relay,Connector.Our parts cover such applications as commercial,industrial, and automotives areas.

We are looking forward to setting up business relationship with you and hope to provide you with the best service and solution. Let us make a better world for our industry!



## Contact us

Tel: +86-755-8981 8866 Fax: +86-755-8427 6832

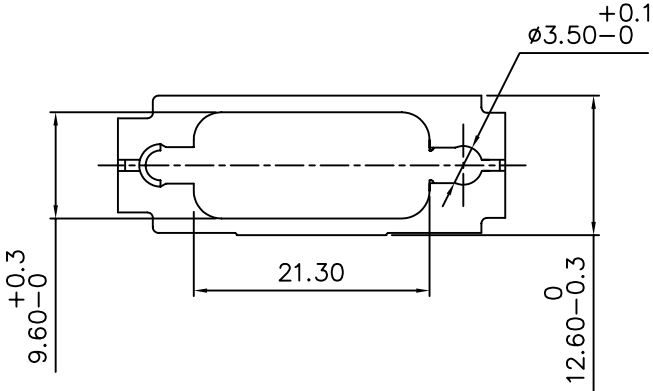
Email & Skype: [info@chipsmall.com](mailto:info@chipsmall.com) Web: [www.chipsmall.com](http://www.chipsmall.com)

Address: A1208, Overseas Decoration Building, #122 Zhenhua RD., Futian, Shenzhen, China

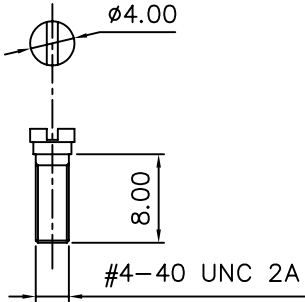


This document is the property of Amphenol Corporation and is delivered on the express condition that it is not to be disclosed, reproduced or used, in whole or in part, for manufacture or sale by anyone other than Amphenol Corporation without its prior consent, & that no right is granted to disclose or to use any information in this document.

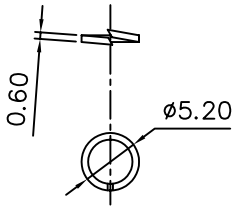
4J29209  
BRACKET



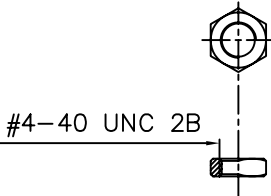
4J29111  
SCREWLOCK



4G96511  
LOCK WASHER



4G96611  
NUT



REVISIONS

SYM	ECN	DESCRIPTION	DATE	APPROVED
1			07/03/08	

D-SUB TECHNICAL DATA

Material and finish:

Bracket: Stainless steel,  $t=0.60\pm0.02\text{mm}$ ,  
passivation over all

Screwlock: Steel, 100u" tin over 50u" nickel

Lock washer: XC35, 100u" tin over 50u" nickel

Nut: Steel, 100u" tin over 50u" nickel

Package:

1 P/N= 1 set

Bracket: 1pcs

Screwlock: 2pcs

Lock washer: 2pcs

Nut: 2pcs

Marking:

Amphenol...(Series No.) Commercial reference

Manufacturing date



Customer drawing

UNLESS OTHERWISE SPECIFIED TOLERANCES		APPROVAL	DATE
U.S.	METRIC	DRAWN	DATE
.X +/-	0.20	Meng ma	07/03/08
.XX +/-	0.10	CHECKED	07/03/08
.XXX +/-	0.05	CHECKED	
FRACTIONS +/-	5'		
ANGLES +/-			
FOR MATERIALS AND FINISHES SEE NOTES		DRAWING FILE :	
REMOVE SHARP EDGES		ANGLE OF PROJECTION	
DIMENSIONS		U.S. INCHES	
U.S. INCHES		METRIC MM	
METRIC MM			

Amphenol®

TITLE  
Bracket+Screwlock+Lock washer+Nut

SIZE	DRAWING NO.	REV.
A4	C L17D512241	1
SCALE	NONE	SHEET 1 OF 1