



Chipsmall Limited consists of a professional team with an average of over 10 year of expertise in the distribution of electronic components. Based in Hongkong, we have already established firm and mutual-benefit business relationships with customers from,Europe,America and south Asia,supplying obsolete and hard-to-find components to meet their specific needs.

With the principle of “Quality Parts,Customers Priority,Honest Operation,and Considerate Service”,our business mainly focus on the distribution of electronic components. Line cards we deal with include Microchip,ALPS,ROHM,Xilinx,Pulse,ON,Everlight and Freescale. Main products comprise IC,Modules,Potentiometer,IC Socket,Relay,Connector.Our parts cover such applications as commercial,industrial, and automotives areas.

We are looking forward to setting up business relationship with you and hope to provide you with the best service and solution. Let us make a better world for our industry!



## Contact us

Tel: +86-755-8981 8866 Fax: +86-755-8427 6832

Email & Skype: [info@chipsmall.com](mailto:info@chipsmall.com) Web: [www.chipsmall.com](http://www.chipsmall.com)

Address: A1208, Overseas Decoration Building, #122 Zhenhua RD., Futian, Shenzhen, China



## FEMALE

### Specifications :

Contact resistance : 30m max. at DC 100mA.

insulator resistance : 1000M min. at DC 500V.

Current rating : 5 AMP.

Dielectric withstanding voltage : AC 500V. for 1 minute

Operating temperature : -55 to +125 degrees Celsius

Contact : Brass , selective gold ( see table below )

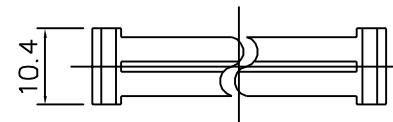
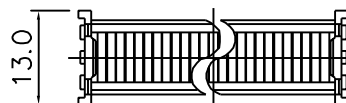
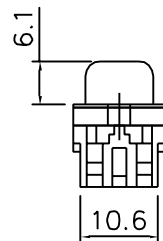
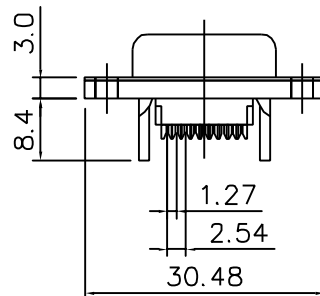
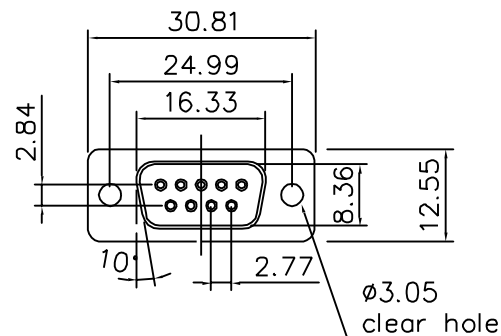
Housing : PBT & 30% glass fiber (UL 94V-0)

Single Contact insertion force : 500g max

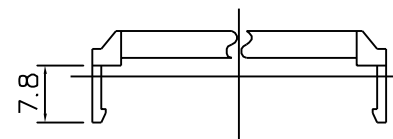
Single contact withdrawal force : 30g min

ROHS COMPLIANT

MSL components : level 3



STRAIN RELIEF



Drawing number	Contact plating
L17DEFRA09S	Gold flash
L117DEFRA09S	15µ inches
L17DEFRA09SC309	30µ inches

TOLERANCE (mm)	APPROVALS	DATE	TITLE	AMPHENOL
X ±0.5	DRAWN GDU	28/04/06	17 SERIES FLAT RIBBON D-SUB SOCKET CONNECTORS	AMPHENOL SOCAPEX Dole Plant
X.X ±0.3	CHECKED JF.L	28/04/06		
X.XX ±0.2	APPROVED JF.L	28/04/06		
UNLESS OTHERWISE SPECIFIED	UNIT: MM	SIZE: A4	DRAWING N° L-17DEFRA09S---	REV. A

Scale N.A. Sheet 1 of 1