



Chipsmall Limited consists of a professional team with an average of over 10 year of expertise in the distribution of electronic components. Based in Hongkong, we have already established firm and mutual-benefit business relationships with customers from,Europe,America and south Asia,supplying obsolete and hard-to-find components to meet their specific needs.

With the principle of “Quality Parts,Customers Priority,Honest Operation,and Considerate Service”,our business mainly focus on the distribution of electronic components. Line cards we deal with include Microchip,ALPS,ROHM,Xilinx,Pulse,ON,Everlight and Freescale. Main products comprise IC,Modules,Potentiometer,IC Socket,Relay,Connector.Our parts cover such applications as commercial,industrial, and automotives areas.

We are looking forward to setting up business relationship with you and hope to provide you with the best service and solution. Let us make a better world for our industry!



Contact us

Tel: +86-755-8981 8866 Fax: +86-755-8427 6832

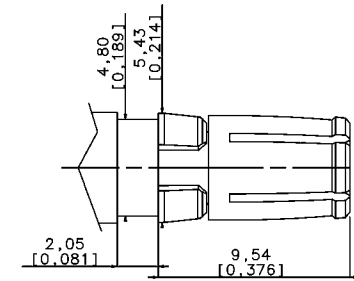
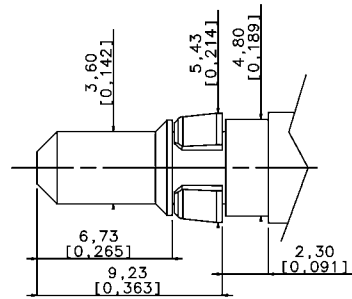
Email & Skype: info@chipsmall.com Web: www.chipsmall.com

Address: A1208, Overseas Decoration Building, #122 Zhenhua RD., Futian, Shenzhen, China



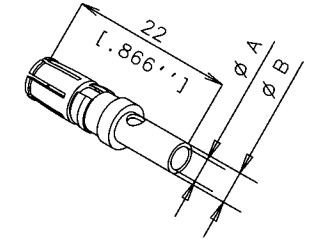
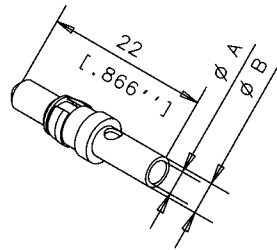
MATERIAL

PIN CONTACT Cu Zn
 SOCKET CONTACT Cu Ni
 RETAINING CLIP Thermoplastic
 SURFACE PLATING Au = 0.5 um



HIGH POWER PLUG

HIGH POWER JACK

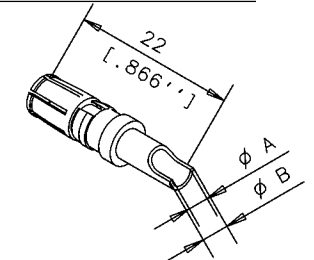
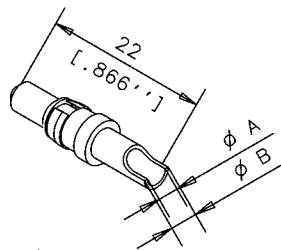


CRIMP VERSION VERSION A SERTIR

	CURRENT	PUISSANCE	ϕA	ϕB		
4W540 30R	L17DM53745-208	10A	1.8	2.55	L17DM53744-207	4W550 30R
4W540 20R	L17DM53745-207	20A	2.8	3.7	L17DM53744-206	4W052 16P
4W042 36P	L17DM53745-204	30A	3.76	4.7	L17DM53744-204	4W052 36P
4W540 00R	L17DM53745-201	40A	4.8	5.6	L17DM53744-201	4W052 06P

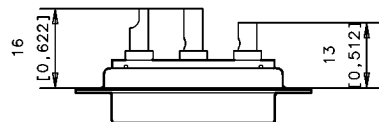
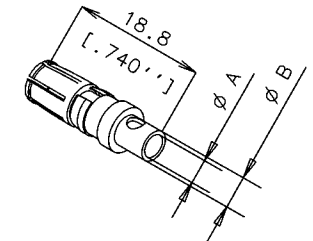
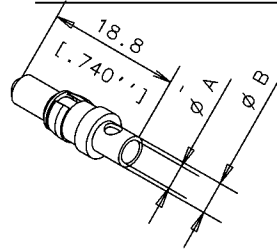
SOLDER VERSION VERSION A SOUDER

	CURRENT	PUISSANCE	ϕA	ϕB		
4W040 30C	L17DM53745-8	10A	1.8	2.55	L17DM53744-7	4W050 30C
4W040 20C	L17DM53745-7	20A	2.8	3.7	L17DM53744-6	4W050 20C
4W040 00C	L17DM53745-1	40A	4.8	5.6	L17DM53744-1	4W050 00C



CRIMP SHORT VERSION VERSION COURTE A SERTIR

	CURRENT	PUISSANCE	ϕA	ϕB		
4W042 29R	L17DM53745-218	10A	1.8	2.55	L17DM53744-217	4W050 29R
4W042 19R	L17DM53745-217	20A	2.8	3.7	L17DM53744-216	NC
NC	L17DM53745-211	40A	4.8	5.6	L17DM53744-211	NC



					TOL. GEN.	
					VOLUME PIECE	
					SURFACE PIECE	
C	conform to RoHS DM 05 23 010	Vallot	23/12 05		PROTECTION	
B	RETAINING CLIP thermoplastic	QUERE	04/10 2004		TRAITEMENT	ECH. ENS.
A	CREATION PLAN	Quere	19/10 95		MATIERE	N SERIE
IND. MODIFICATIONS		EXEC.	DATE	Approb		
DATE DU TIRAGE		DESIGNATION				

Amphenol Socapex
Usine de Dole

HIGH POWER CONTACTS 0,5 Au