



Chipsmall Limited consists of a professional team with an average of over 10 year of expertise in the distribution of electronic components. Based in Hongkong, we have already established firm and mutual-benefit business relationships with customers from,Europe,America and south Asia,supplying obsolete and hard-to-find components to meet their specific needs.

With the principle of "Quality Parts,Customers Priority,Honest Operation,and Considerate Service",our business mainly focus on the distribution of electronic components. Line cards we deal with include Microchip,ALPS,ROHM,Xilinx,Pulse,ON,Everlight and Freescale. Main products comprise IC,Modules,Potentiometer,IC Socket,Relay,Connector.Our parts cover such applications as commercial,industrial, and automotives areas.

We are looking forward to setting up business relationship with you and hope to provide you with the best service and solution. Let us make a better world for our industry!



## Contact us

Tel: +86-755-8981 8866 Fax: +86-755-8427 6832

Email & Skype: info@chipsmall.com Web: www.chipsmall.com

Address: A1208, Overseas Decoration Building, #122 Zhenhua RD., Futian, Shenzhen, China



REV.	DESCRIPTION	DATE	APPROVED
F	Corrected Board Thickness	04/01/14	J. C.
G	Engineering Release	04/01/14	J. C.
H	Removed BOM	08/09/16	J. C.

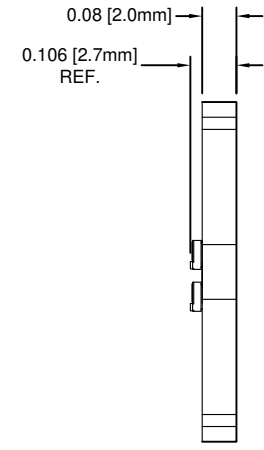
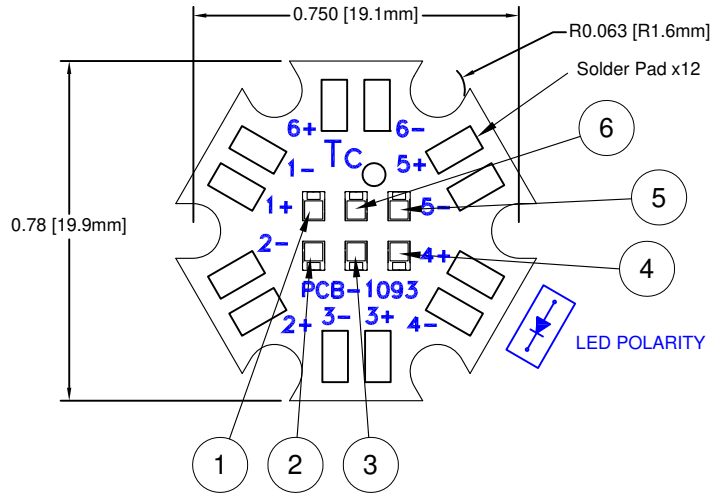

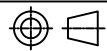


Table 1: Assembly Configurations

Part Number	LED Location	Anode	Cathode	LED P/N	Color	Wavelength (nm) / CCT (K)	Typical Luminous Flux (lm)	Philips Lumileds P/N Reference
L24-ZRGBAW2	1	1+	1-	BDL-1514	Red	627	40	LXZ1-PD01
	2	2+	2-	BDL-1515	Green	530	72	LXZ1-PM01
	3	3+	3-	BDL-1516	Blue	470	24	LXZ1-PB01
	4	4+	4-	BDL-1517	Amber	590	48	LXZ1-PL02
	5	5+	5-	BDL-1510	Warm White	3000	110	LXZ1-3080-5
	6	6+	6-	BDL-1513	Cool White	5700	140	LXZ1-5770

STANDARD TOLERANCE (UNLESS OTHERWISE SPECIFIED)		 4 THOMAS, IRVINE, CA. 92618 TEL.: (949) 951-8808 FAX: (949) 951-3974	
DECIMALS	ANGULAR		
.X ± .1	X° ± 1°		TITLE: L24 Starboard Light Engine
.XX ± .02			DESIGNED: <b>B. Oliver</b>
.XXX ± .010		CHECKED: <b>J. Chiang</b>	DATE: <b>11/07/13</b>
		PART NO: <b>L24-ZRGBAW2</b>	REVISION: <b>H</b>
		CAGE CODE : <b>32559</b>	SHEET # <b>1 OF 1</b>
CAD GENERATED DOCUMENT. DO NOT MEASURE DRAWING.			