



Chipsmall Limited consists of a professional team with an average of over 10 year of expertise in the distribution of electronic components. Based in Hongkong, we have already established firm and mutual-benefit business relationships with customers from,Europe,America and south Asia,supplying obsolete and hard-to-find components to meet their specific needs.

With the principle of “Quality Parts,Customers Priority,Honest Operation,and Considerate Service”,our business mainly focus on the distribution of electronic components. Line cards we deal with include Microchip,ALPS,ROHM,Xilinx,Pulse,ON,Everlight and Freescale. Main products comprise IC,Modules,Potentiometer,IC Socket,Relay,Connector.Our parts cover such applications as commercial,industrial, and automotives areas.

We are looking forward to setting up business relationship with you and hope to provide you with the best service and solution. Let us make a better world for our industry!



Contact us

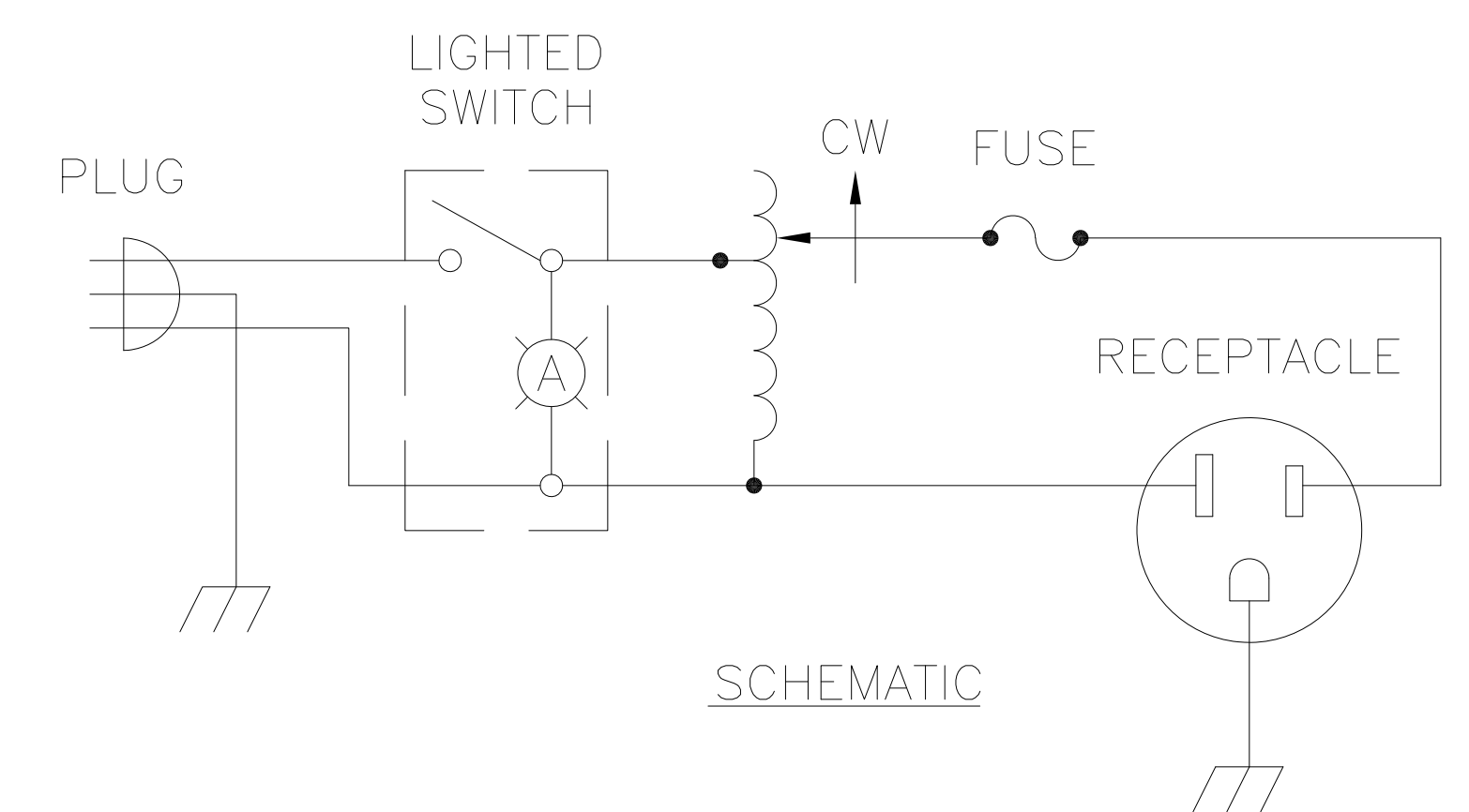
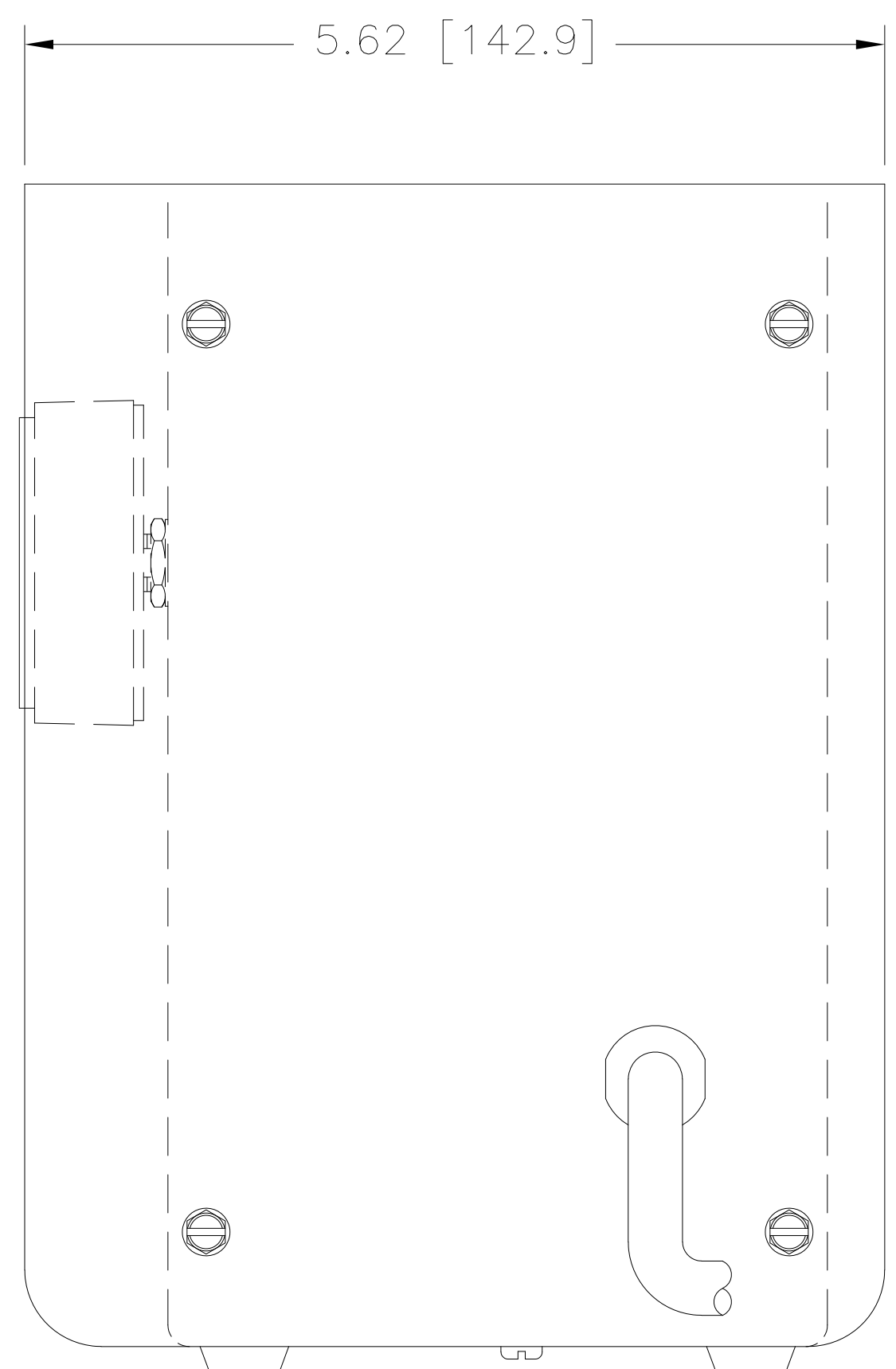
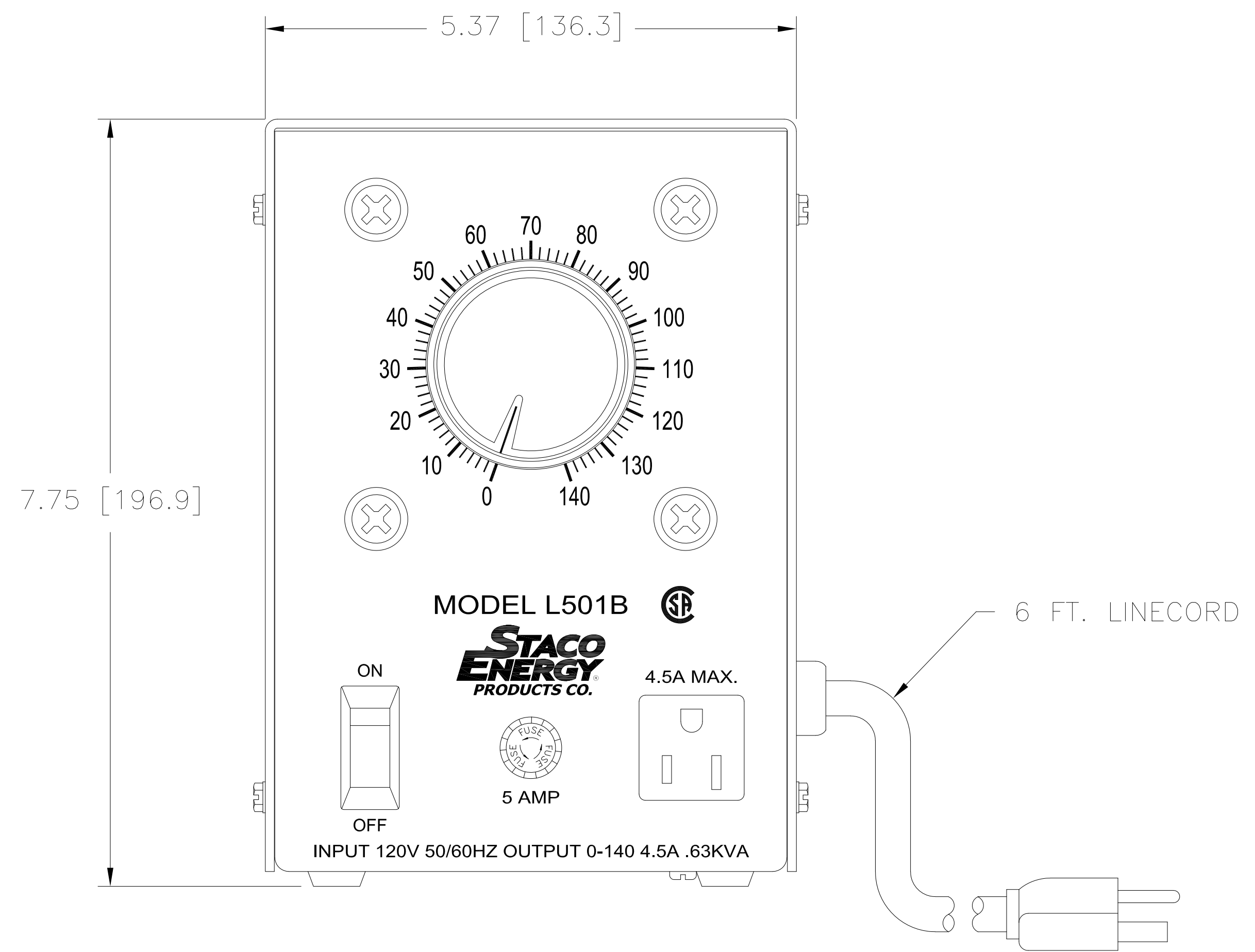
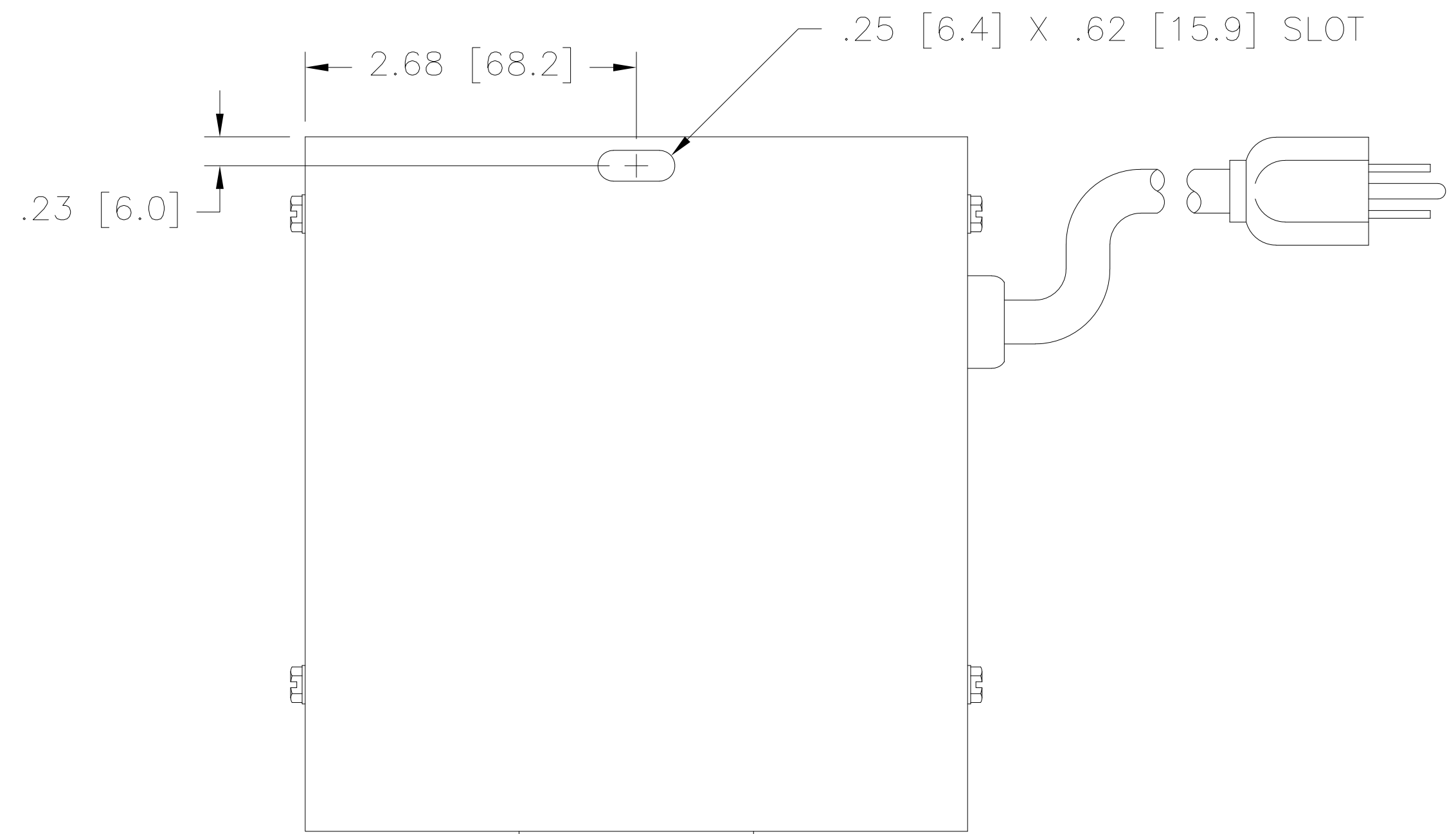
Tel: +86-755-8981 8866 Fax: +86-755-8427 6832

Email & Skype: info@chipsmall.com Web: www.chipsmall.com

Address: A1208, Overseas Decoration Building, #122 Zhenhua RD., Futian, Shenzhen, China



DWG. NO.	065-1029		
REVISIONS			
SYM.	E.C.G.	DATE	APVD.
A	24794	4/9/02	REVISD HARDWARE
B	25781	9/29/06	REVISD SILKSCREEN
C	28805	4/5/17	UPDATED LOGO



SPECIFICATIONS					
WIRING	INPUT		OUTPUT		
	VOLTS	HERTZ	VOLTS	CONSTANT CURRENT LOAD	
SINGLE PHASE	120	50/60	0-140	MAX. AMPS	MAX. KVA
				4.5	0.63

UNLESS OTHERWISE SPECIFIED, TOLERANCE IS ±		UNITS		TITLE:	
DECIMALS	Holes	ANGLES	DRAFT	SPEC. CONTROL DRAWING	
.XX	.010	1°	1-1/2°	VARIABLE AC POWER SOURCE	
.XXX	.005			MODEL: L501B	
MATERIAL:		ALL DIMENSIONS APPLY AFTER PLATING		DRAWN BY	
				S.A. SMITH	
				DATE	
				3/4/99	
				FIRST USED ON	
				DO NOT SCALE DWG.	
				CHECKER	
				DATE	
				WEIGHT APPROX.	
				SCALE	
				SHEET 1 OF 1	
				DWG. NO.	
				065-1029	

