



Chipsmall Limited consists of a professional team with an average of over 10 year of expertise in the distribution of electronic components. Based in Hongkong, we have already established firm and mutual-benefit business relationships with customers from,Europe,America and south Asia,supplying obsolete and hard-to-find components to meet their specific needs.

With the principle of “Quality Parts,Customers Priority,Honest Operation,and Considerate Service”,our business mainly focus on the distribution of electronic components. Line cards we deal with include Microchip,ALPS,ROHM,Xilinx,Pulse,ON,Everlight and Freescale. Main products comprise IC,Modules,Potentiometer,IC Socket,Relay,Connector.Our parts cover such applications as commercial,industrial, and automotives areas.

We are looking forward to setting up business relationship with you and hope to provide you with the best service and solution. Let us make a better world for our industry!



## Contact us

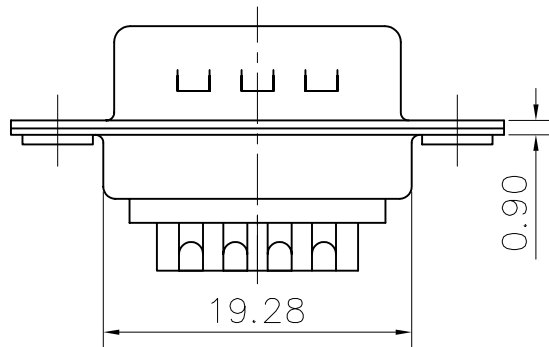
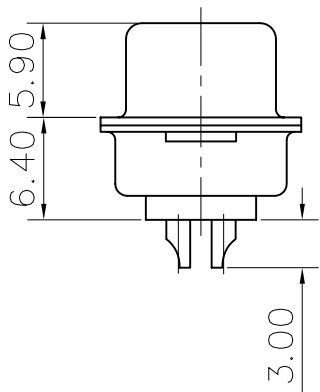
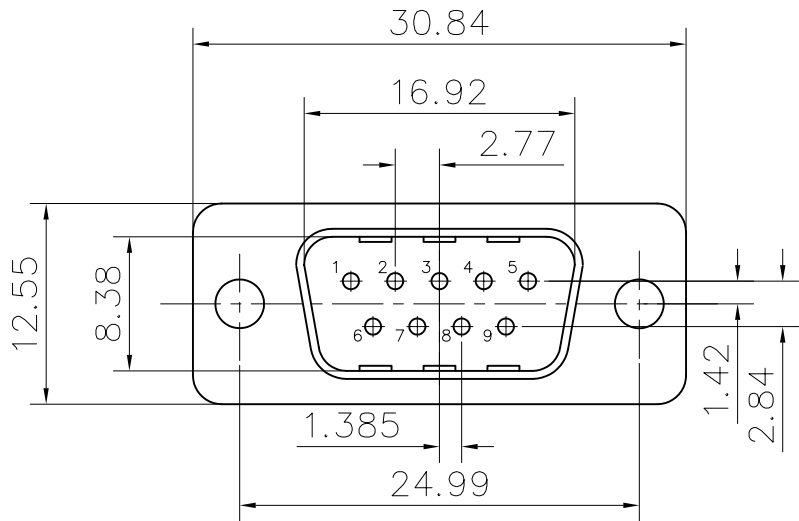
Tel: +86-755-8981 8866 Fax: +86-755-8427 6832

Email & Skype: [info@chipsmall.com](mailto:info@chipsmall.com) Web: [www.chipsmall.com](http://www.chipsmall.com)

Address: A1208, Overseas Decoration Building, #122 Zhenhua RD., Futian, Shenzhen, China



This document is the property of Amphenol Corporation and is delivered on the express condition that it is not to be disclosed, reproduced or used, in whole or in part, for manufacture or sale by anyone other than Amphenol Corporation without its prior consent, & that no right is granted to disclose or to use any information in this document.



| REVISIONS |     |             |          |          |
|-----------|-----|-------------|----------|----------|
| SYM       | ECN | DESCRIPTION | DATE     | APPROVED |
| A         |     |             | 09/10/07 |          |

### D-SUB TECHNICAL DATA

SHELL :Steel 2.5um(100u") min tin over 1.25um(50u") min nickel

BODY : Glass filled thermoplastic.

Flame retarding to UL94 V-0 Color Black

CONTACTS : brass

gold flash over 1.25um(50u") min nickel on mating area.

2.5um(100u") min sn over 1.25um(50u") min nickel on solder area

ELECTRICAL : Voltage rating : 250 V RMS at 50 Hz

Current rating :1A

Withstanding Voltage >1000 V Rms to 50 Hz for one minute

Insulation resistance >5000 M Ohms

Contact resistance 20 mOhms max.

CLIMATIC : Temperature range -55 °C up to 125°C

MACHANICAL : Insertion force per contact 3.41N Max

Extraction force per contact 0.21N Min..

MARKING : Amphenol...(Series No.)

Commercial reference

Manufacturing date

### PRODUCT CODE

L 717SD E 09 P

L: RoHS Compliance

717SD: tinned shell  
with dimple

Contact type:  
S:Female  
P: Male

Configuration: 09

Shell Size :E

| UNLESS OTHERWISE SPECIFIED TOLERANCES |        | APPROVAL            | DATE                   |
|---------------------------------------|--------|---------------------|------------------------|
| U.S.                                  | METRIC | DRAWN               | Christina.cui 09/10/07 |
| .X +/-                                | 0.50   | CHECKED             | Wk.wang 09/10/07       |
| .XX +/-                               | 0.30   | CHECKED             |                        |
| .XXX +/-                              | 0.20   |                     |                        |
| FRACTIONS +/-                         | 2'     |                     |                        |
| ANGLES +/-                            |        |                     |                        |
| FOR MATERIALS AND FINISHES SEE NOTES  |        | DRAWING FILE :      |                        |
| REMOVE SHARP EDGES                    |        | ANGLE OF PROJECTION |                        |
| DIMENSIONS                            |        |                     |                        |
| U.S.                                  | INCHES |                     |                        |
| METRIC                                | MM     |                     |                        |

Amphenol

TITLE  
Stamped and Formed connector, SD series

|       |              |              |
|-------|--------------|--------------|
| SIZE  | DRAWING NO.  | REV.         |
| A4    | C L717SDE09P | A            |
| SCALE | NONE         | SHEET 1 OF 1 |