



Chipsmall Limited consists of a professional team with an average of over 10 year of expertise in the distribution of electronic components. Based in Hongkong, we have already established firm and mutual-benefit business relationships with customers from,Europe,America and south Asia,supplying obsolete and hard-to-find components to meet their specific needs.

With the principle of “Quality Parts,Customers Priority,Honest Operation,and Considerate Service”,our business mainly focus on the distribution of electronic components. Line cards we deal with include Microchip,ALPS,ROHM,Xilinx,Pulse,ON,Everlight and Freescale. Main products comprise IC,Modules,Potentiometer,IC Socket,Relay,Connector.Our parts cover such applications as commercial,industrial, and automotives areas.

We are looking forward to setting up business relationship with you and hope to provide you with the best service and solution. Let us make a better world for our industry!



## Contact us

Tel: +86-755-8981 8866 Fax: +86-755-8427 6832

Email & Skype: info@chipsmall.com Web: www.chipsmall.com

Address: A1208, Overseas Decoration Building, #122 Zhenhua RD., Futian, Shenzhen, China



1 2 3 4 5 6 7 8

### TECHNICAL DATA

#### D-SUBMINIATURE CONNECTORS

**SHELL :** Steel  
**Finish :** Tinned  
**BODY :** Glass filled thermoplastic.  
**Flame retardant to UL94 V-0**  
**Color :** Black

**CONTACTS :** Material for pins Brass,Material for socket:Bronze.  
**Finish of contact mating area:**  
 Gold plating over Nickel on mating side.  
 tin plated on rear power contact

**ELECTRICAL :** Voltage rating 300 V Rms to 50 Hz  
 Nominal current 7.5 A (Size 8)  
 Withstanding Voltage >1000 V Rms to 50 Hz  
 Contact resistance 50 mOhms max.  
 Insulator resistance >5000 M Ohms

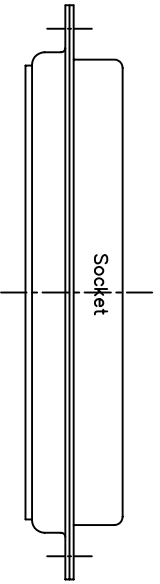
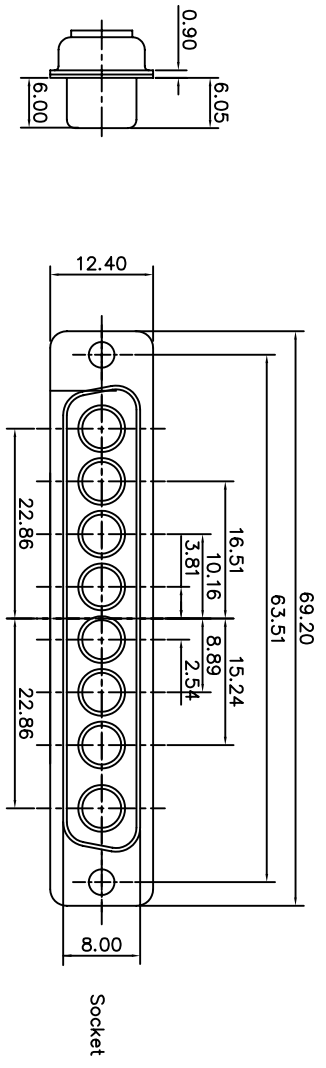
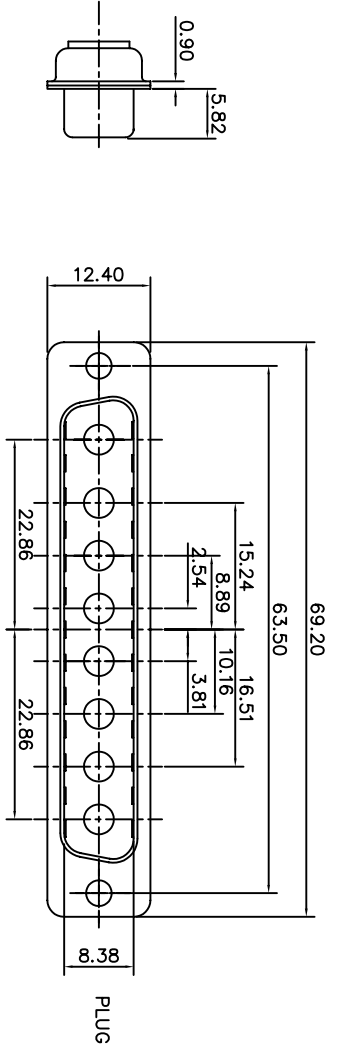
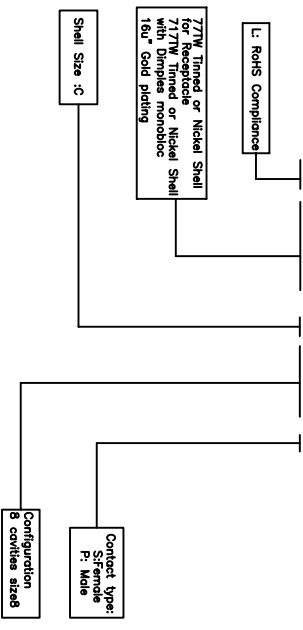
**CLIMATIC :** Temperature range -55 degree up to 155 degree  
 Damp heat 56 days(40 degree-95% HR)  
 Other climatic specification in accordance with  
 NF C93-425 Sheet HE507

**MACHANICAL :** Insertion force per contact 1.2N <F<2.5N(Size 20)  
 Extraction force per contact 0.4N MIN.(Size 20)  
 Mating and unmating force size A 80N Max.4.5 N mini.

**MARKING :** Amphenol...(Series No.)  
 Commercial reference  
 Manufacturing date

#### PRODUCT CODE

### L 717TW C 8W8 P



<b>Amphenol Socapex</b>		TOL. GEN. : +/-0.30																		
SERIES	NUMBER SERIES	FILE:	TREATMENT:	MATERIAL:	CUSTOMER	MODIFICATIONS	DATE	APPROVE	IND											
TW	TW				origin drawing		08/1006	Gilles	A											
DATE	2006.08.10	DESIGNATION	D-SUB CONNECTOR	COMMERCIAL PART NUMBER	L717TWC8W8P															