



Chipsmall Limited consists of a professional team with an average of over 10 year of expertise in the distribution of electronic components. Based in Hongkong, we have already established firm and mutual-benefit business relationships with customers from,Europe,America and south Asia,supplying obsolete and hard-to-find components to meet their specific needs.

With the principle of “Quality Parts,Customers Priority,Honest Operation,and Considerate Service”,our business mainly focus on the distribution of electronic components. Line cards we deal with include Microchip,ALPS,ROHM,Xilinx,Pulse,ON,Everlight and Freescale. Main products comprise IC,Modules,Potentiometer,IC Socket,Relay,Connector.Our parts cover such applications as commercial,industrial, and automotives areas.

We are looking forward to setting up business relationship with you and hope to provide you with the best service and solution. Let us make a better world for our industry!



Contact us

Tel: +86-755-8981 8866 Fax: +86-755-8427 6832

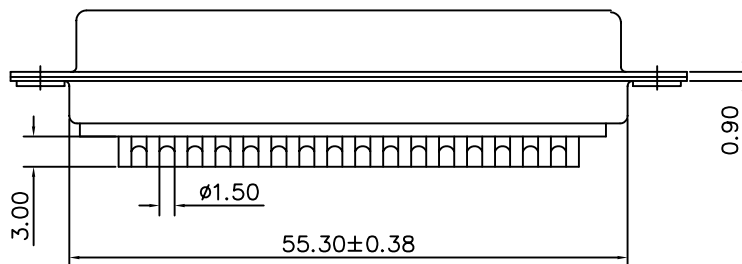
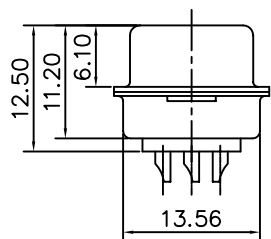
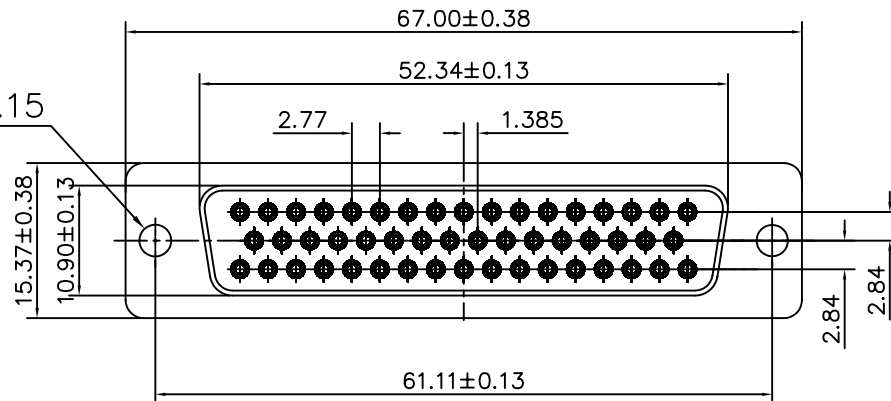
Email & Skype: info@chipsmall.com Web: www.chipsmall.com

Address: A1208, Overseas Decoration Building, #122 Zhenhua RD., Futian, Shenzhen, China



This document is the property of Amphenol Corporation and is delivered on the express condition that it is not to be disclosed, reproduced or used, in whole or in part, for manufacture or sale by anyone other than Amphenol Corporation without its prior consent, & that no right is granted to disclose or to use any information in this document.

ø3.15



REVISIONS

SYM	ECN	DESCRIPTION	DATE	APPROVED
A			08/06/07	

D-SUB TECHNICAL DATA

SHELL : Steel, 2.5um (100u") min tin over 1.25um (50u") min nickel

BODY : Glass filled thermoplastic.

Flame retardant to UL94 V-0 Color Black

CONTACTS : brass.

Gold flash over 1.25um (50u") min nickel

ELECTRICAL : Voltage rating :1000 V RMS at 50 Hz

Current rating 3A.

Insulation resistance >1000 M Ohms

Contact resistance 20 mOhms max.

CLIMATIC : Temperature range -55 °C up to 125°C

MARKING : Amphenol-...(Series No.)

Commercial reference

Manufacturing date

PRODUCT CODE

L 77 SD D 50 S

RoHS Compliance

77: tinned shell for receptable

SD: standard density
HD: high density

Shell Size :D

Contact type:
S:Female
P: Male

Configuration: 50

UNLESS OTHERWISE SPECIFIED TOLERANCES		APPROVAL	DATE
U.S.	METRIC	DRAWN	Lisa.peng 08/06/07
.X +/-	0.50	CHECKED	lik.wang 08/06/07
.XX +/-	0.30	CHECKED	
.XXX +/-	0.20		
FRACTIONS +/-			
ANGLES +/-	2°		
FOR MATERIALS AND FINISHES SEE NOTES		DRAWING FILE :	
REMOVE SHARP EDGES		ANGLE OF PROJECTION	
DIMENSIONS		U.S. INCHES	
METRIC MM		MM	

Amphenol

TITLE
Stamped and Formed connector, SD series

SIZE	DRAWING NO.	REV.
A4	C L77SDD50S	A
SCALE	NONE	SHEET 1 OF 1