



Chipsmall Limited consists of a professional team with an average of over 10 year of expertise in the distribution of electronic components. Based in Hongkong, we have already established firm and mutual-benefit business relationships with customers from,Europe,America and south Asia,supplying obsolete and hard-to-find components to meet their specific needs.

With the principle of “Quality Parts,Customers Priority,Honest Operation,and Considerate Service”,our business mainly focus on the distribution of electronic components. Line cards we deal with include Microchip,ALPS,ROHM,Xilinx,Pulse,ON,Everlight and Freescale. Main products comprise IC,Modules,Potentiometer,IC Socket,Relay,Connector.Our parts cover such applications as commercial,industrial, and automotives areas.

We are looking forward to setting up business relationship with you and hope to provide you with the best service and solution. Let us make a better world for our industry!



## Contact us

Tel: +86-755-8981 8866 Fax: +86-755-8427 6832

Email & Skype: info@chipsmall.com Web: www.chipsmall.com

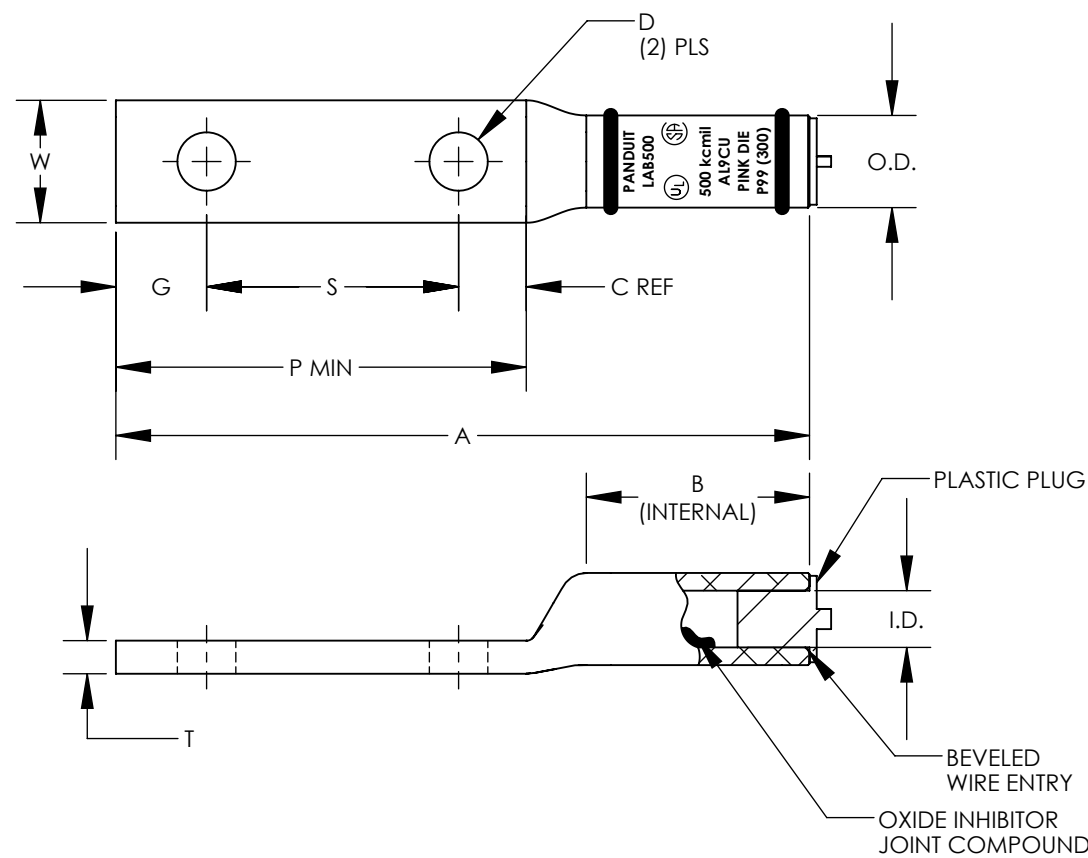
Address: A1208, Overseas Decoration Building, #122 Zhenhua RD., Futian, Shenzhen, China



PANDUIT PART NUMBER	CONDUCTOR SIZE	STUD SIZE	OVERALL LENGTH "A" +/- .12	BARREL LENGTH "B" MIN	BARREL		TONGUE WIDTH "W" +/- .060	TONGUE THICKNESS "T" +/- .020	TONGUE LENGTH "P" MIN	HOLE OFFSET "G" +/- .031	STUD HOLE DIA "D" +/- .02	HOLE SPACING "S" +/- .04	WRENCH CLEARANCE "C" REF	WIRE STRIP LENGTH	PANDUIT DIE COLOR CODE PANDUIT DIE INDEX NUMBER (BURNDY DIE INDEX NUMBER)
					I.D. +/- .010	O.D. +/- .010									
LAB300-12-2	300 kcmil	1/2"	6.56	2.25	0.65	1.10	1.38	0.34	3.56	0.63	0.53	1.75	1.18	2-5/16"	BLUE DIE P76 (470)
LAB350-12-2R	350 kcmil	1/2"	6.56	2.31	0.72	1.11	1.52	0.38	3.56	0.63	0.53	1.75	1.18	2-5/16"	BROWN DIE P87 (299)
LAB400-12-2	400 kcmil	1/2"	6.94	2.50	0.76	1.19	1.66	0.39	3.56	0.63	0.53	1.75	1.18	2-9/16"	GREEN DIE P94 (472)
LAB500-12-2R	500 kcmil	1/2"	7.31	3.00	0.84	1.32	1.74	0.45	3.56	0.63	0.53	1.75	1.18	3-1/16"	PINK DIE P99 (300)
LAB600-12-2	600 kcmil	1/2"	7.56	3.00	0.92	1.44	1.73	0.50	3.63	0.63	0.53	1.75	1.25	3-1/16"	BLACK DIE P106 (473)
LAB750-12-1R	750 kcmil	1/2"	8.25	3.44	1.03	1.59	1.74	0.54	3.63	0.63	0.53	1.75	1.25	3-7/16"	RED DIE P125 (301)
LAB800-12-1	800 kcmil	1/2"	8.31	3.38	1.06	1.66	1.75	0.59	3.63	0.63	0.53	1.75	1.25	3-7/16"	GRAY DIE P140 (474)
LAB1000-12-1	1000 kcmil	1/2"	9.73	4.50	1.19	1.84	2.56	0.63	3.63	0.63	0.53	1.75	1.25	4-3/4"	BROWN DIE P161 (302)

NOTES:

1. MATERIAL: SEAMLESS ALUMINUM TUBING, TIN PLATED
2. BARREL COLOR CODED WITH DIE SET INDEX NUMBER
3. FOR STRANDED ALUMINUM AND COPPER WIRE
4. UL LISTED & CSA CERTIFIED TEMPERATURE RATED 90° C (AL9CU)
5. UL LISTED & CSA CERTIFIED VOLTAGE RATING 35 KV
6. ALL DIMENSIONS IN INCHES



08	12/15	JHNU	JHNU	RGB	REVISED W DIM FOR LAB300: 1.38 WAS 1.34 REVISED P DIM FOR LAB350: 3.56 WAS 3.11 REVISED P DIM FOR LAB500: 3.56 WAS 3.15 REVISED P DIM FOR LAB750: 3.63 WAS 3.12	N41152BA-C41152
07	8/15	JHNU	JHNU	RGB	ADDED "D" DIMENSION	N41152BA-C41152
06	3/15	JHNU	JHNU	RGB	REVISED A DIM: LAB350-12-2R WAS 6.07, LAB500-12-2R WAS 6.80 LAB750-12-1R WAS 7.31 REVISED W DIM: LAB500-12-2R WAS 1.62, LAB750-12-1R WAS 1.69 REVISED T DIM: LAB350-12-2R WAS .39, LAB500-12-2R WAS .46 LAB750-12-1R WAS .57 REVISED C DIM: LAB350-12-2R WAS .73, LAB500-12-2R WAS .77, LAB750-12-1R WAS .74	N41152BA-C41152
05	3/15	JHNU	JHNU	RGB	REVISED DIMENSIONS, REVISED NOTES ADDED BARREL MARKING ADDED COLOR CODE/DIE INDEX NUMBER REMOVED LAB350-12-X, LAB500-12-2, LAB750-12-1 ADDED LAB350-12-XR, LAB500-12-2R, LAB750-12-1R	N41152BA-C41152
04	3/13	JHNU	JHNU	RGB	REVISED TITLE BLOCK CONVERTED TO SOLIDWORKS	N41152BA-C41152
REV	DATE	BY	CHK	APR	DESCRIPTION	ECN

TITLE <b>LAB SERIES 300kcmil - 1000 kcmil ALUMINUM LUGS CUSTOMER DRAWING</b>		
ITEM REVISION NAME	N41152BA-C41152/08	
DATASET FILE NAME	C41152/08.SLDDRW	MATERIAL SEE NOTES
UNLESS OTHERWISE SPECIFIED, DIMENSIONAL TOLERANCES ARE: IN [mm] .X ± .XXX ± .XX ± ANGLES ±		
THIRD ANGLE PROJECTION		DRAWING NUMBER C41152
DRAWN BY MS	DATE 4/95	CHK SCALE NONE
SHEET 1 OF 1		SIZE B