



Chipsmall Limited consists of a professional team with an average of over 10 year of expertise in the distribution of electronic components. Based in Hongkong, we have already established firm and mutual-benefit business relationships with customers from,Europe,America and south Asia,supplying obsolete and hard-to-find components to meet their specific needs.

With the principle of "Quality Parts,Customers Priority,Honest Operation,and Considerate Service",our business mainly focus on the distribution of electronic components. Line cards we deal with include Microchip,ALPS,ROHM,Xilinx,Pulse,ON,Everlight and Freescale. Main products comprise IC,Modules,Potentiometer,IC Socket,Relay,Connector.Our parts cover such applications as commercial,industrial, and automotives areas.

We are looking forward to setting up business relationship with you and hope to provide you with the best service and solution. Let us make a better world for our industry!



## Contact us

Tel: +86-755-8981 8866 Fax: +86-755-8427 6832

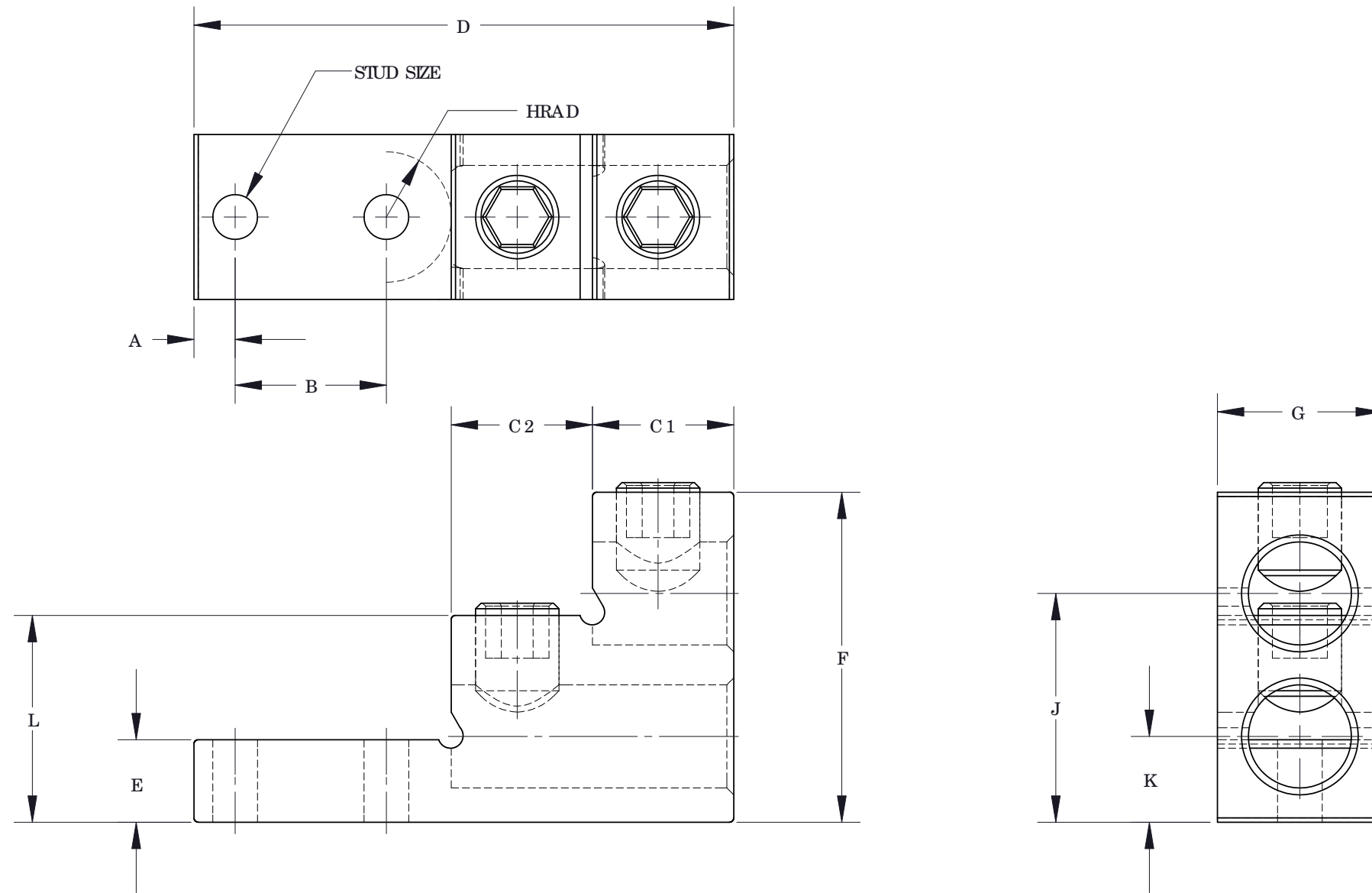
Email & Skype: info@chipsmall.com Web: www.chipsmall.com

Address: A1208, Overseas Decoration Building, #122 Zhenhua RD., Futian, Shenzhen, China



NOTES:

1. MATERIAL:  
BODY - ALUMINUM, TIN PLATED  
SCREW - ALUMINUM, TIN PLATED
2. UL LISTED & CSA CERTIFIED FOR USE UP TO 600V & TEMPERATURE RATED 90 °C (A19C U)
3. DUAL RATED FOR USE WITH COPPER OR ALUMINUM STRANDED CODE CONDUCTOR
4. THESE PARTS ARE RoHS COMPLIANT
5. USE OF OXIDE INHIBITING JOINT COMPOUND LIKE PANDUIT CMP-100 RECOMMENDED FOR PAD TO PAD AND CONDUCTOR SURFACES
6. SEE PACKAGING LABEL FOR TIGHTENING TORQUE INFORMATION
7. PKG QTY:  
1 = 1



PART NUMBER	STUD SIZE	DIMENSIONS - IN [mm]												WIRE RANGE	HEX KEY*
		A	B	C1	C2	D	E	F	G	H	J	K	L		
LAM2SB600-38-1Y	3/8	.38 [9.5]	1.38 [35.1]	1.38 [35.1]	1.19 [30.2]	4.91 [124.7]	.75 [19.1]	3.00 [76.2]	1.50 [38.1]	.58 [14.7]	2.08 [52.8]	.78 [19.81]	1.88 [47.8]	600kcmil-2	3/8
LAM2SB750-38-1Y	3/8	.38 [9.5]	1.38 [35.1]	1.38 [35.1]	1.19 [30.2]	4.91 [124.7]	.75 [19.1]	3.00 [76.2]	1.50 [38.1]	.58 [14.7]	2.08 [52.8]	.78 [19.81]	1.88 [47.8]	750kcmil-1/0	3/8

\* HEX SIZE MAY DIFFER FROM CHART. DIFFERENCE IN SIZE WILL NOT AFFECT FIT, FORM, OR FUNCTION OF PART

							<b>PANDUIT CORP. TINLEY PARK, ILLINOIS</b>	
							<b>LAM2SB SERIES ALUMINUM MECHANICAL LUGS CUSTOMER DRAWING</b>	
03	9/10	JHNU	JHNU	C. REVISED DIMENSIONS FOR LAM2SB600-38-1Y B. REVISED DIMENSIONS FOR LAM2SB750-38-1Y A. REMOVED TIGHTENING TORQUE & WEIGHT COLUMN			N41559BA-C41559	FLD FLD
02	1/07	JHNU	JHNU	ADDED PART WEIGHT COLUMN TO TABLE				
01	3/06	JHNU	LEM	REVISED RoHS NOTE				
00	2/06	JHNU	LEM	DRAWING RELEASED - RoHS COMPLIANT				
REV	DATE	BY	CHK	DESCRIPTION			ECN	-R SUP
							UNLESS OTHERWISE SPECIFIED DIMENSIONAL TOLERANCES ARE: (.X) ± (.XXX) ± (.XX) ± ANGLES ±	
							UNLESS OTHERWISE SPECIFIED, ALL DIMENSIONS ARE GIVEN IN INCHES, THIRD ANGLE PROJECTION	
							SCALE NONE	
							DRAWN BY JHNU DATE 2/06 CHK'D	
							DRAWING NO / CAD FILE C41559_03	
							DWG SIZE B	