



Chipsmall Limited consists of a professional team with an average of over 10 year of expertise in the distribution of electronic components. Based in Hongkong, we have already established firm and mutual-benefit business relationships with customers from,Europe,America and south Asia,supplying obsolete and hard-to-find components to meet their specific needs.

With the principle of "Quality Parts,Customers Priority,Honest Operation,and Considerate Service",our business mainly focus on the distribution of electronic components. Line cards we deal with include Microchip,ALPS,ROHM,Xilinx,Pulse,ON,Everlight and Freescale. Main products comprise IC,Modules,Potentiometer,IC Socket,Relay,Connector.Our parts cover such applications as commercial,industrial, and automotives areas.

We are looking forward to setting up business relationship with you and hope to provide you with the best service and solution. Let us make a better world for our industry!



Contact us

Tel: +86-755-8981 8866 Fax: +86-755-8427 6832

Email & Skype: info@chipsmall.com Web: www.chipsmall.com

Address: A1208, Overseas Decoration Building, #122 Zhenhua RD., Futian, Shenzhen, China



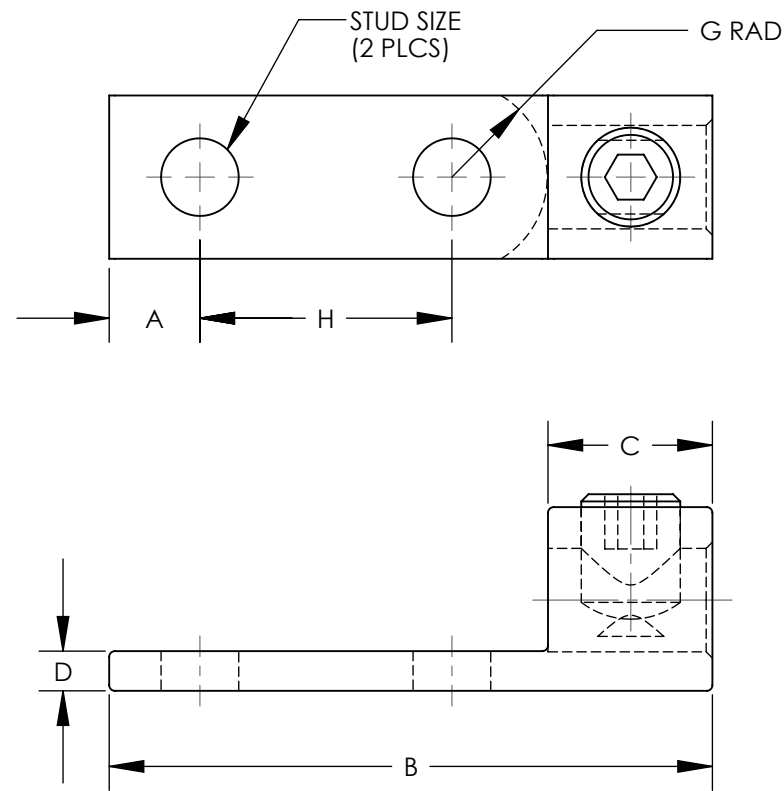


FIGURE 1

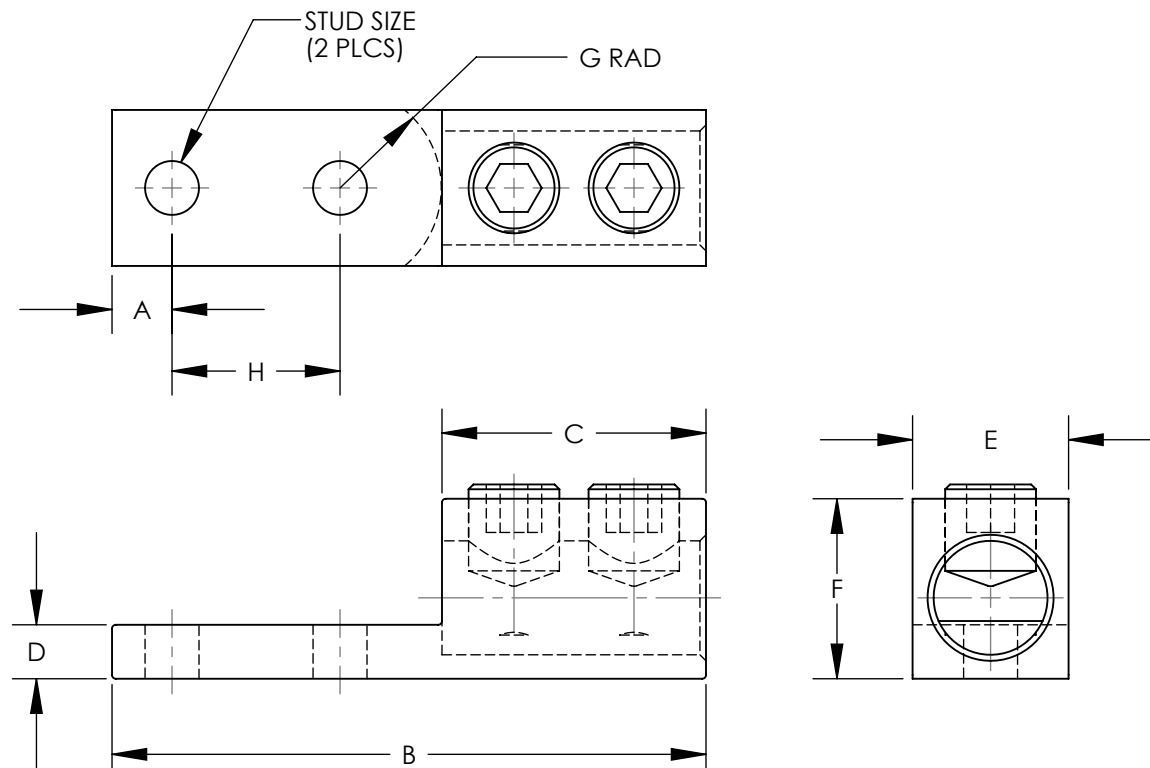


FIGURE 2

NOTES:

1. MATERIAL:
BODY - ALUMINUM, TIN PLATED
SCREW - ALUMINUM, TIN PLATED
2. UL LISTED & CSA CERTIFIED FOR USE UP TO 600V & TEMPERATURE RATED 90°C (AL9CU)
NOTE: LAMB350-12-6Y & LAMB600-12-3Y ARE cULus
3. DUAL RATED FOR USE WITH COPPER OR ALUMINUM STRANDED CODE CONDUCTOR
4. THESE PARTS ARE RoHS COMPLIANT
5. USE OF OXIDE INHIBITING JOINT COMPOUND LIKE PANDUIT CMP-100 RECOMMENDED FOR PAD TO PAD AND CONDUCTOR SURFACES
6. SEE PACKAGING LABEL FOR TIGHTENING TORQUE INFORMATION
7. PKG QTY:
6 = 6
3 = 3
8. ** DENOTES NEMA HOLE SPACING



PART NUMBER	FIGURE	WIRE RANGE COPPER/ALUMINUM	WIRE STRIP LENGTH IN [mm]	STUD SIZE IN.	DIM A IN [mm]	DIM B IN [mm]	DIM C IN [mm]	DIM D IN [mm]	DIM E IN [mm]	DIM F IN [mm]	DIM G IN [mm]	DIM H IN [mm]	HEX KEY*
LAMB350-12-6Y	1	350 kcmil - 6 AWG	1.13 [28.7]	1/2	.63 [16.0]	4.19 [106.4]	1.13 [28.7]	.25 [6.4]	1.13 [28.7]	1.25 [31.8]	.68 [17.3]	**1.75 [44.5]	5/16
LAMB600-12-3Y	1	600 kcmil - 2 AWG	1.38 [35.1]	1/2	.63 [16.0]	4.69 [119.1]	1.38 [35.1]	.44 [11.2]	1.50 [38.1]	1.56 [39.6]	.93 [23.6]	**1.75 [44.5]	1/2
LAMLB1000-12-3	2	500kcmil - 1000 kcmil	2.75 [69.9]	1/2	.63 [16.0]	6.19 [157.2]	2.75 [69.9]	.56 [14.2]	1.63 [41.4]	1.88 [47.8]	1.06 [27.0]	**1.75 [44.5]	1/2

* HEX SIZE MAY DIFFER FROM CHART. DIFFERENCE IN SIZE WILL NOT AFFECT FIT, FORM, OR FUNCTION OF PART

										C41568_03			
										PANDUIT CORP. TINLEY PARK, ILLINOIS			
										LAMB,LAMLB ALUMINUM MECHANICAL LUGS CUSTOMER DRAWING			
03	12/11	JHNU	JHNU	D. REVISED HEX KEY FOR LAMB350-12: 5/16" WAS 3/8"				N41568BB-C41568	RGB	RGB			
02	9/10	JHNU	JHNU	C. REMOVED INSTALLATION TORQUE COLUMN B. REMOVED LAMLB800-12-3Y A. ADDED LAMLB1000-12-3				N41568BB-C41568	FLD	FLD	UNLESS OTHERWISE SPECIFIED DIMENSIONAL TOLERANCES ARE: (.X) ± --- (.XXX) ± --- (.XX) ± --- ANGLES ± ---		
01	3/06	JHNU	LEM	REVISED RoHS NOTE				PC00334			DRAWN BY JHNU		
00	2/06	JHNU	LEM	DRAWING RELEASED - RoHS COMPLIANT				PC00299			DATE 2/06		
REV	DATE	BY	CHK	DESCRIPTION				ECN	-R	SUP	CHK'D	SCALE NONE	
												UNLESS OTHERWISE SPECIFIED, ALL DIMENSIONS ARE GIVEN IN INCHES, THIRD ANGLE PROJECTION	
												DRAWING NO / CAD FILE C41568	
												DWG B SIZE	