



Chipsmall Limited consists of a professional team with an average of over 10 year of expertise in the distribution of electronic components. Based in Hongkong, we have already established firm and mutual-benefit business relationships with customers from,Europe,America and south Asia,supplying obsolete and hard-to-find components to meet their specific needs.

With the principle of “Quality Parts,Customers Priority,Honest Operation,and Considerate Service”,our business mainly focus on the distribution of electronic components. Line cards we deal with include Microchip,ALPS,ROHM,Xilinx,Pulse,ON,Everlight and Freescale. Main products comprise IC,Modules,Potentiometer,IC Socket,Relay,Connector.Our parts cover such applications as commercial,industrial, and automotives areas.

We are looking forward to setting up business relationship with you and hope to provide you with the best service and solution. Let us make a better world for our industry!



Contact us

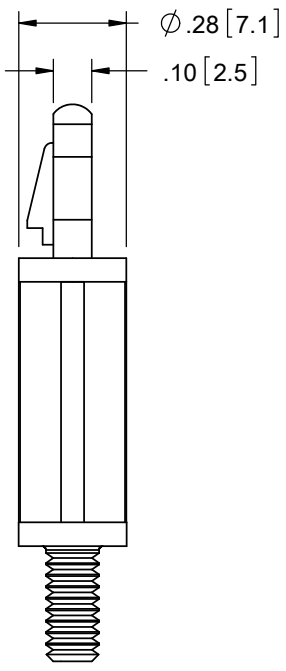
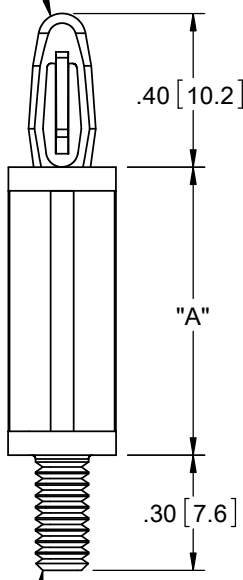
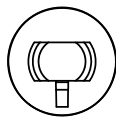
Tel: +86-755-8981 8866 Fax: +86-755-8427 6832

Email & Skype: info@chipsmall.com Web: www.chipsmall.com

Address: A1208, Overseas Decoration Building, #122 Zhenhua RD., Futian, Shenzhen, China

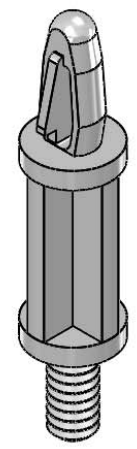


TO-SNAP LOCK IN A .156±.003
 [4±0.08] DIA. HOLE IN A
 .062 [1.57] PANEL THICKNESS



#6-32 THREAD

MATERIAL: NYLON 6/6 UL 94 V-2 (RMS-01) COLOR: NATURAL PART NO.	MATERIAL: NYLON 6/6 UL 94 V-2 (RMS-19) COLOR: NATURAL PART NO.	DIM. "A"±.015 [0.4]
LCBS-TM-4-01	LCBS-TM-4-19	1/4 [6.4]
LCBS-TM-6-01	LCBS-TM-6-19	3/8 [9.5]
LCBS-TM-8-01	LCBS-TM-8-19	1/2 [12.7]
LCBS-TM-10-01	LCBS-TM-10-19	5/8 [15.9]
LCBS-TM-12-01	LCBS-TM-12-19	3/4 [19.1]
LCBS-TM-14-01	LCBS-TM-14-19	7/8 [22.2]
LCBS-TM-16-01	LCBS-TM-16-19	1 [25.4]



- NOTES:
- M4 THREAD AVAILABLE BY SPECIAL ORDER ONLY.
 TO ORDER, ADD "-M4" TO PART NO.
 EXAMPLE: LCBSTM-M4-X-XX"
 - ALTERNATE UNITS FOR REFERENCE ONLY.

G SEE CO 200773 FOR CHANGES SK 04.30.12			TITLE: LCBS, THREADED MALE				DWG IN IN [MM] FINAL		QR	
F CORRECTED TYPO ON NOTE 1, CO 200578 SK 09/07/10			FILE #: LCBS-TM		DWN: SK		APP: RT		PART #	
E REDRAWN, SEE ECN #1208 FOR CHANGES SK 11/29/06			SHEET: 1 OF 1 SHEET SIZE: A		DT: 11/20/06		CHKD: SJ		SEE TABLE	
- SEE ENGINEERING FOR REV A-D			RE: RICHCO, INC.		RICHCO, INC.		ENG@RICHCO-INC.COM		PRINT TYPE	
REV. DESCRIPTION ENGR. DATE			TOLERANCES UNLESS NOTED .XX=±.010 .XXX=±.005 FRAC.=±1/64 ANG.=±1°		ENG@RICHCO-INC.COM (773) 539-4060				CA	