



Chipsmall Limited consists of a professional team with an average of over 10 year of expertise in the distribution of electronic components. Based in Hongkong, we have already established firm and mutual-benefit business relationships with customers from,Europe,America and south Asia,supplying obsolete and hard-to-find components to meet their specific needs.

With the principle of “Quality Parts,Customers Priority,Honest Operation,and Considerate Service”,our business mainly focus on the distribution of electronic components. Line cards we deal with include Microchip,ALPS,ROHM,Xilinx,Pulse,ON,Everlight and Freescale. Main products comprise IC,Modules,Potentiometer,IC Socket,Relay,Connector.Our parts cover such applications as commercial,industrial, and automotives areas.

We are looking forward to setting up business relationship with you and hope to provide you with the best service and solution. Let us make a better world for our industry!



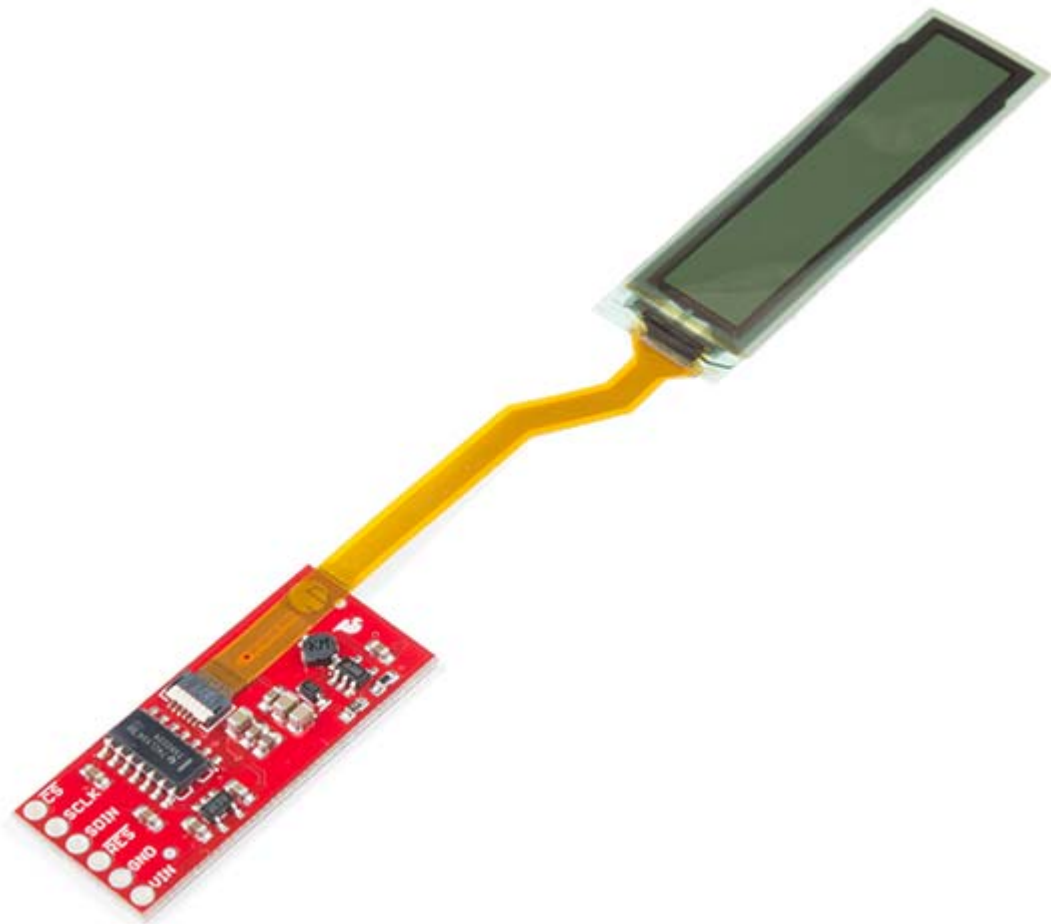
Contact us

Tel: +86-755-8981 8866 Fax: +86-755-8427 6832

Email & Skype: info@chipsmall.com Web: www.chipsmall.com

Address: A1208, Overseas Decoration Building, #122 Zhenhua RD., Futian, Shenzhen, China





SparkFun Flexible Grayscale OLED Breakout - 1.81"

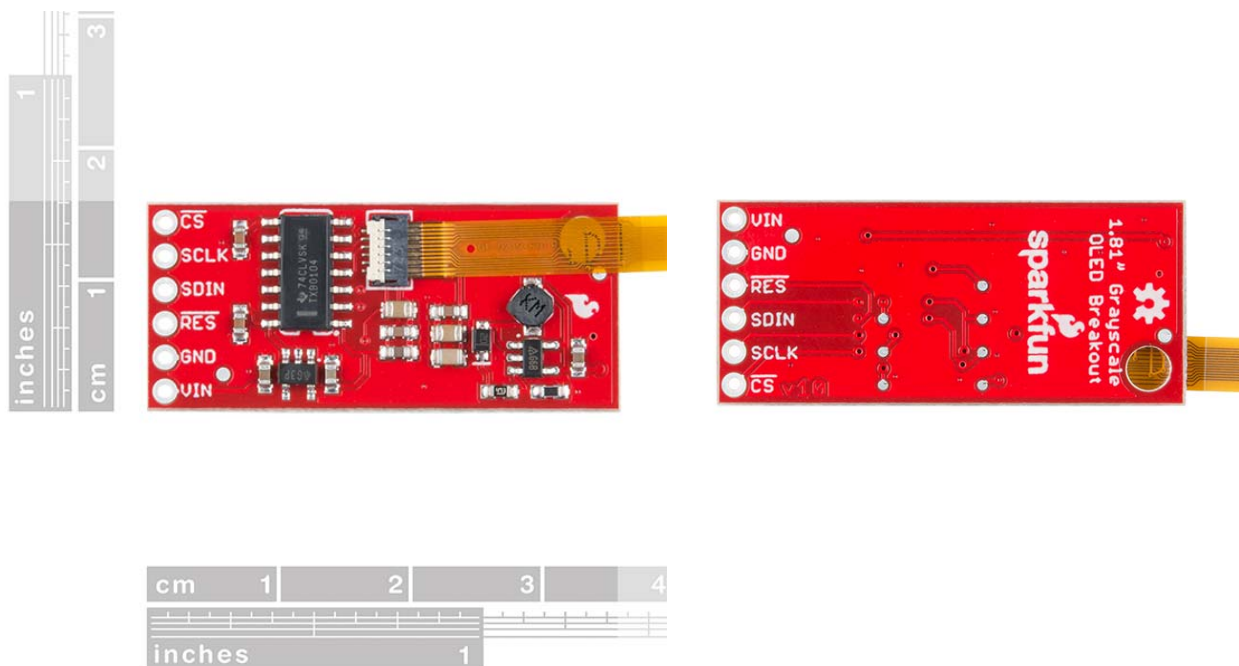
LCD-14606

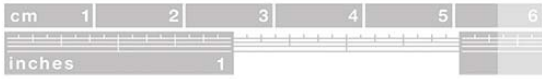
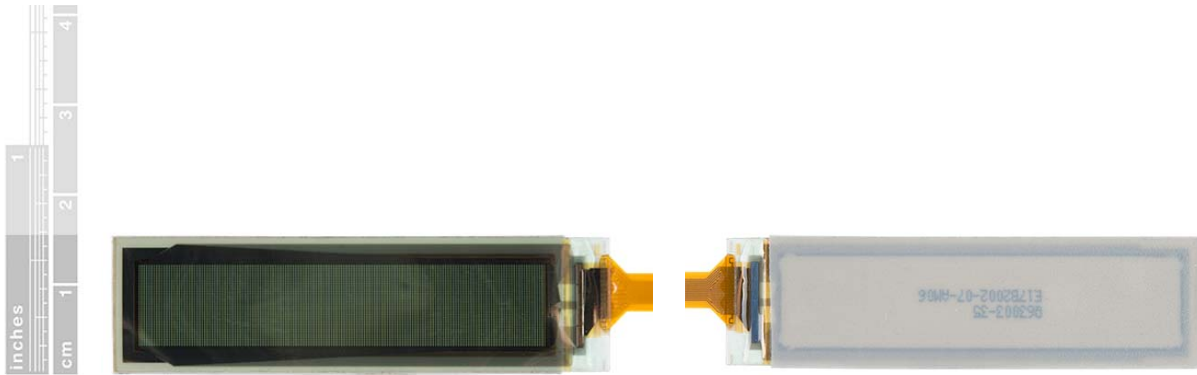
It's typically better to have a flexible mind and outlook on life, so the same should go for OLED displays! The SparkFun Flexible Grayscale OLED Breakout is pretty much exactly what the name says it is: a small grayscale OLED that can be bent up to a 40mm radius without any worry of damage. Attached to a controller board, the actual display is less than 0.5mm thick and can display some impressive graphics (including BMP images, a variety of text options, or even a game of Pong) with great contrast.

The OLED display is 1.81" long with 160x32 4-bit grayscale pixels with a 3-wire SPI interface. This means you will need a processor capable of storing a local array of 2,560 bytes in order to truly *flex* the power of the grayscale display. The Flexible OLED is fairly simple to connect to your microcontroller. You can either solder headers to the OLED breakout or solder wires straight to the breakout pins. The on-board buffer on the breakout also provides you with an option to hook the display straight up to 3.3V or 5V logic without the need for any logic conversion circuitry.

FEATURES

- Operating Voltage: 3.5V - 5V
- Operating Temperature: -40°C - 60°C
- Resolution: 160 x 32
- Bend Radius: 40 mm
- Pixel Density: 88 DPI
- Grayscale Resolution: 4-bit
- Weight:
 - Display: 0.4g
 - PCB: 2.25g
- Dimensions:
 - Display: 16mm x 56mm
 - PCB: 16mm x 37mm





<https://www.sparkfun.com/products/14606> 6-4-18