



Chipsmall Limited consists of a professional team with an average of over 10 year of expertise in the distribution of electronic components. Based in Hongkong, we have already established firm and mutual-benefit business relationships with customers from,Europe,America and south Asia,supplying obsolete and hard-to-find components to meet their specific needs.

With the principle of “Quality Parts,Customers Priority,Honest Operation,and Considerate Service”,our business mainly focus on the distribution of electronic components. Line cards we deal with include Microchip,ALPS,ROHM,Xilinx,Pulse,ON,Everlight and Freescale. Main products comprise IC,Modules,Potentiometer,IC Socket,Relay,Connector.Our parts cover such applications as commercial,industrial, and automotives areas.

We are looking forward to setting up business relationship with you and hope to provide you with the best service and solution. Let us make a better world for our industry!



Contact us

Tel: +86-755-8981 8866 Fax: +86-755-8427 6832

Email & Skype: info@chipsmall.com Web: www.chipsmall.com

Address: A1208, Overseas Decoration Building, #122 Zhenhua RD., Futian, Shenzhen, China

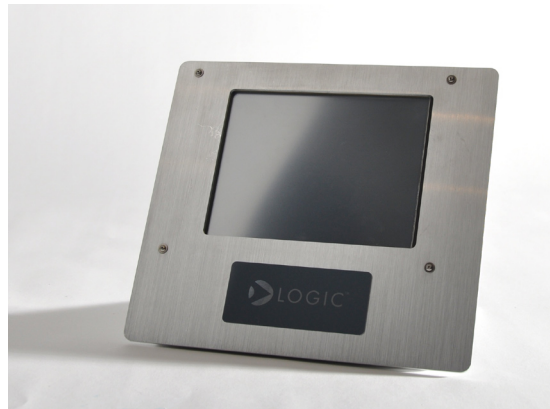


PRODUCT BRIEF:

Logic product solutions

ZOOM™ DISPLAY KITS **Development Tool**

The Zoom™ Display Kits are ready-to-use liquid crystal displays (LCDs) that can be immediately connected to Zoom™ Development Kits. The 3.6" and 6.4" Display Kits include bezel, backlight, 4-wire resistive touch panel, and ribbon cable. The 4.3" Display Kit includes 4-wire resistive touch panel and an LCD connector built into the PCB.



ZOOM™ 6.4" VGA DISPLAY KIT

ZOOM™ DISPLAY KITS :: NOTES:

- + Please verify the selected processor supports the Display Kit. Visit Logic's website for details.
- + RoHS compliant

LOGIC WEBSITE :: DESIGN RESOURCES:

- + Logic Products : www.logicpd.com/products
- + Logic Technical Support : www.logicpd.com/product-support
- + For more information contact Logic Sales : product.sales@logicpd.com

Model Number	Sharp LCD PN	Display Size	Display Format	LCD Interface	Key Features
LCD-3.6-QVGA-10R	LQ036Q1DA01	3.6"	QVGA 320x240	TFT	Color, transmissive w/HRTFT ASIC
LCD-4.3-WQVGA-10R	LQ043T1DG01	4.3"	WQVGA 480x272	TFT	Widescreen, color, transmissive
LCD-6.4-VGA-10R	LQ64D343	6.4"	VGA 640x480	TFT	Color, transmissive



LOGIC

411 N. Washington Ave. Suite 400
Minneapolis, MN 55401

T : 612.672.9495 F : 612.672.9489 I : www.logicpd.com