



Chipsmall Limited consists of a professional team with an average of over 10 year of expertise in the distribution of electronic components. Based in Hongkong, we have already established firm and mutual-benefit business relationships with customers from,Europe,America and south Asia,supplying obsolete and hard-to-find components to meet their specific needs.

With the principle of “Quality Parts,Customers Priority,Honest Operation,and Considerate Service”,our business mainly focus on the distribution of electronic components. Line cards we deal with include Microchip,ALPS,ROHM,Xilinx,Pulse,ON,Everlight and Freescale. Main products comprise IC,Modules,Potentiometer,IC Socket,Relay,Connector.Our parts cover such applications as commercial,industrial, and automotives areas.

We are looking forward to setting up business relationship with you and hope to provide you with the best service and solution. Let us make a better world for our industry!



Contact us

Tel: +86-755-8981 8866 Fax: +86-755-8427 6832

Email & Skype: info@chipsmall.com Web: www.chipsmall.com

Address: A1208, Overseas Decoration Building, #122 Zhenhua RD., Futian, Shenzhen, China



ALL DIMENSIONS ARE IN mm

Part Number	Class 2r Wire Size	Class 5f & 6f Wire Size	Stud Size	Wire Strip Length	Panduit Die Index No. For Class 2r Wire Circumferential Dies	Panduit Die Index No. For Class 5f & 6f Wire Circumferential Dies	Panduit Die Index No. For Class 5f & 6f Wire Nest/Indenter Dies	l ±2.76	o ±50	i ±50	a ±2.25	m (ref)	n ±2.25	d ±50	b ±2.25	t
*LCMA 185-8-X	185mm ²	150mm ²	M8	29.7	P76	----	P76/4	72.5	23.00	18.60	28.2	16.5	17.5	9.00	33.5	4.55 ± .50
LCMA 185-10-X	185mm ²	150mm ²	M10	29.7	P76	----	P76/4	72.5	23.00	18.60	28.2	16.5	17.5	11.00	33.5	4.55 ± .50
LCMA 185-12-X	185mm ²	150mm ²	M12	29.7	P76	----	P76/4	72.5	23.00	18.60	28.2	16.5	17.5	14.00	33.5	4.55 ± .50
LCMA 185-16-X	185mm ²	150mm ²	M16	29.7	P76	----	P76/4	72.5	23.00	18.60	28.2	16.5	17.5	18.00	33.5	4.40 ± .50
LCMA 185-20-X	185mm ²	150mm ²	M20	29.7	P76	----	P76/4	77.0	23.00	18.60	28.2	21.0	17.5	22.00	33.5	4.40 ± .50
LCMA 240-10-X	240mm ²	185mm ²	M10	36.5	P87	----	P87/4	86.5	26.00	20.80	35.0	21.0	19.5	11.00	37.5	5.30 ± .50
LCMA 240-12-X	240mm ²	185mm ²	M12	36.5	P87	----	P87/4	86.5	26.00	20.80	35.0	21.0	19.5	14.00	37.5	5.30 ± .50
LCMA 240-16-X	240mm ²	185mm ²	M16	36.5	P87	----	P87/4	86.5	26.00	20.80	35.0	21.0	19.5	18.00	37.5	5.30 ± .50
LCMA 240-20-X	240mm ²	185mm ²	M20	36.5	P87	----	P87/4	86.5	26.00	20.80	35.0	21.0	19.5	22.00	37.5	5.20 ± .50
LCMA 300-10-5	300mm ²	240mm ²	M10	41.8	P94	----	P106/6	94.5	29.00	23.50	40.3	22.0	20.0	11.00	42.5	5.40 ± .55
LCMA 300-12-5	300mm ²	240mm ²	M12	41.8	P94	----	P106/6	94.5	29.00	23.50	40.3	25.0	20.0	14.00	42.5	5.40 ± .55
LCMA 300-16-5	300mm ²	240mm ²	M16	41.8	P94	----	P106/6	94.5	29.00	23.50	40.3	22.0	20.0	18.00	42.5	5.40 ± .55
LCMA 300-20-5	300mm ²	240mm ²	M20	41.8	P94	----	P106/6	94.5	29.00	23.50	40.3	22.0	20.0	22.00	42.5	5.30 ± .55
LCMAX300-10-5	----	300mm ² 5f ONLY	M10	46.3	----	----	P32/6	108.0	33.00	26.20	44.8	26.5	23.5	11.00	48.0	6.70 ± .55
LCMAX300-12-5	----		M12	46.3	----	----	P32/6	107.0	33.00	26.20	44.8	26.5	23.5	14.00	48.0	6.70 ± .55
LCMAX300-16-5	----		M16	46.3	----	----	P32/6	107.0	33.00	26.20	44.8	26.5	23.5	18.00	48.0	6.70 ± .55
LCMAX300-20-5	----		M20	46.3	----	----	P32/6	107.0	33.00	26.20	44.8	26.5	23.5	22.00	48.0	6.70 ± .55
LCMA 400-12-5	400mm ²	----	M12	46.3	P106	----	----	107.0	34.50	27.00	44.8	26.5	23.5	14.00	49.5	7.50 ± .55
LCMA 400-16-5	400mm ²	----	M16	46.3	P106	----	----	107.0	34.50	27.00	44.8	26.5	23.5	18.00	49.5	7.50 ± .55
LCMA 400-20-5	400mm ²	----	M20	46.3	P106	----	----	107.0	34.50	27.00	44.8	26.5	23.5	22.00	49.5	7.50 ± .55
LCMA 500-12-1	500mm ²	----	M12	48.0	P125	----	----	121.0	40.00	31.00	46.5	28.5	25.5	14.00	57.5	8.90 ± .55
LCMA 500-16-1	500mm ²	----	M16	48.0	P125	----	----	121.0	40.00	31.00	46.5	28.5	25.5	18.00	57.5	8.90 ± .55
LCMA 500-20-1	500mm ²	----	M20	48.0	P125	----	----	121.0	40.00	31.00	46.5	28.5	25.5	22.00	57.5	8.90 ± .55
LCMA 630-16-1	630mm ²	----	M16	57.7	P125	----	----	132.0	44.00	34.50	56.2	28.5	27.5	18.00	63.0	9.40 ± .65
LCMA 630-20-1	630mm ²	----	M20	57.7	P125	----	----	132.0	44.00	34.50	56.2	28.5	27.5	22.00	63.0	9.40 ± .65

*cULus LISTED WIRE CONNECTOR

- NOTES:
1. Material: High conductivity seamless copper tube.
 2. Plating: Parts are annealed and tin plated.
 3. Wire Type: Class 2r, 5f & 6f Stranded Copper per DIN VDE 0295, IEC 60228 and HD 383.
 4. UL Listed Wire Connector: Yes, for applications up to 35kv.
Consult cable manufacturer for voltage stress relief instructions with applications greater than 2000 volts.
 5. UL Temperature Rating: 90° C
 6. C.S.A. Certified Wire Connector: Yes
 7. Parts are CE and tested per EN 61238-1:2003/IEC 61238-1:2003 Class B, with Class 2r wire 185mm² - 240mm².



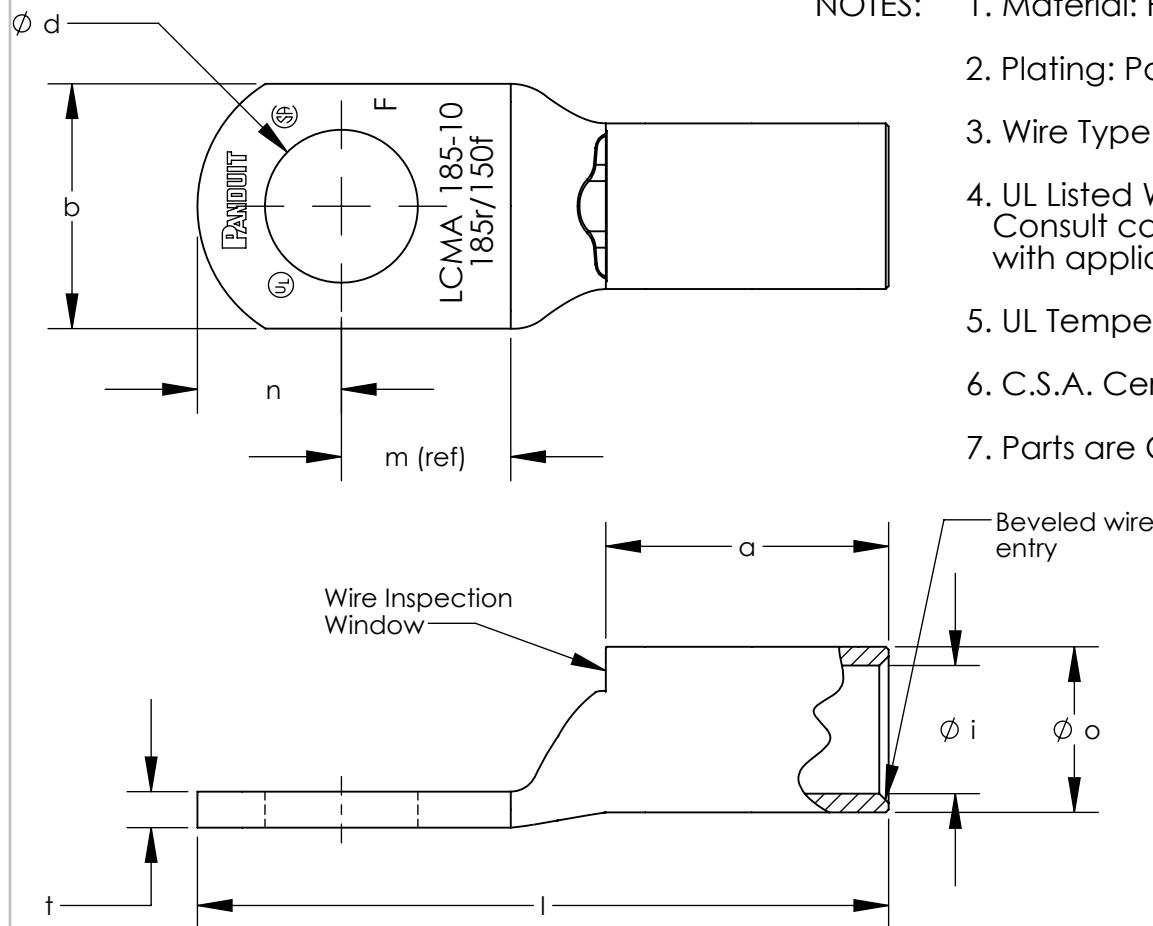
LISTED Wire Connector



LISTED Wire Connector



CERTIFIED



REV	DATE	BY	CHK	APR	DESCRIPTION	ECN
03	7/15	JHNU	TLCO	RGB	ADDED LCMA185-8-X	13J059BG-JC
02	6/14	JHNU	TLCO	RGB	ADDED 5f ONLY TO WIRE SIZE FOR X300 PARTS	13J059BG-JC
01	6/14	JHNU	TLCO	RGB	REVISED I DIM: LCMAX300-10 WAS 107.0, LCMA500 PARTS WERE 120.0, LCMA630 PARTS WERE 131.0 REVISED m DIM: LCMA300-12 WAS 22.0	13J059BG-JC
00	4/14	JHNU	TLCO	RGB	DRAWING RELEASED	

TITLE
METRIC LUGS - LCMA ONE HOLE SERIES 185-630mm STANDARD BARREL CUSTOMER DRAWING

ITEM REVISION NAME: 13J059BG/03

DATASET FILE NAME: 13J059BG-JC/03.SLDDRW

UNLESS OTHERWISE SPECIFIED, DIMENSIONAL TOLERANCES ARE: IN [mm]

.X ± .XXX ±
.XX ± ANGLES ±

THIRD ANGLE PROJECTION

DRAWN BY: JHNU DATE: 12/13 CHK: TLCO SCALE: NONE

MATERIAL: SEE NOTES

DRAWING NUMBER: 12J059BG-JC

SHEET 1 OF 1 SIZE: B