



Chipsmall Limited consists of a professional team with an average of over 10 year of expertise in the distribution of electronic components. Based in Hongkong, we have already established firm and mutual-benefit business relationships with customers from,Europe,America and south Asia,supplying obsolete and hard-to-find components to meet their specific needs.

With the principle of "Quality Parts,Customers Priority,Honest Operation,and Considerate Service",our business mainly focus on the distribution of electronic components. Line cards we deal with include Microchip,ALPS,ROHM,Xilinx,Pulse,ON,Everlight and Freescale. Main products comprise IC,Modules,Potentiometer,IC Socket,Relay,Connector.Our parts cover such applications as commercial,industrial, and automotives areas.

We are looking forward to setting up business relationship with you and hope to provide you with the best service and solution. Let us make a better world for our industry!



Contact us

Tel: +86-755-8981 8866 Fax: +86-755-8427 6832

Email & Skype: info@chipsmall.com Web: www.chipsmall.com

Address: A1208, Overseas Decoration Building, #122 Zhenhua RD., Futian, Shenzhen, China



NOTES:

1. DESIGN: Lens mounts the Litepipe securely to display panel providing 180° viewing angle
2. MOUNTING: Panel mounting hole .250 (6.35mm) on 3/8" centers
3. PANEL THICKNESS: For CLB 300 and SQB 400: 1/32" to 1/4".
For Panels less than 3/16" use SPC 125
4. LENS LOCK Insert Litepipe into lens aligning the tabs with the lens slot
Standoff used to adjust the height of a standard LED above the PCB and maintain a maximum .050" clearance between the Litepipe and LED.
5. Length is from front of panel to LED
6. Custom lengths available upon request (Minimum order quantity may apply)
7. U.S. & Foreign Pat. Issued and Pend.

REVISIONS				
ECN #	REV	DESCRIPTION	DATE	INITIALS
	N/A	INITIAL RELEASE	1/25/96	JS
	001	REVISED PER ECN111009AZ01	4/23/10	KH

D

D

C

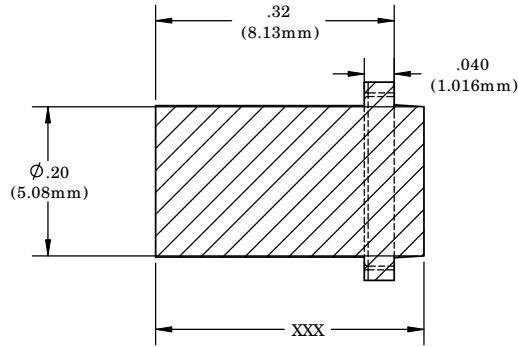
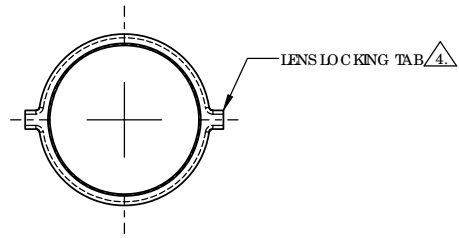
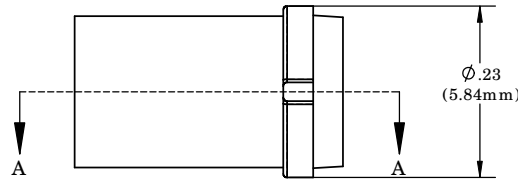
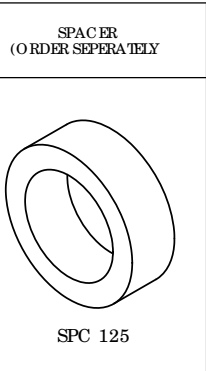
C

B

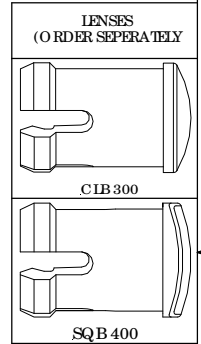
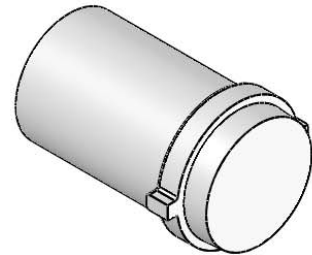
B

A

A



SECTION A-A

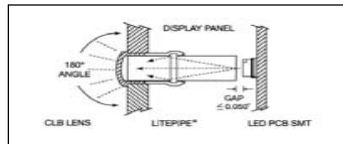


ORDERING CODE
LCV XXX CTP

LENGTH CODE	
036	= .360"
056	.560"
076	.760"
096	.960"
116	1.160"
136	1.360"

COLOR	
CTP	CLEAR

CUSTOM LENGTHS
AVAILABLE UPON
REQUEST
(SEE NOTE 7)



UNLESS OTHERWISE SPECIFIED DIMENSIONS ARE IN INCHES		MATERIAL		VISUAL COMMUNICATIONS COMPANY, INC.	
ANGLES ±1°	DECIMALS .X ±.020 .XX ±.010 .XXX ±.005	ACRYLIC (OPTICAL GRADE) U.L. 94-HB		190 Bossick Boulevard, Suite 101 San Marcos, CA 92069 USA Phone (760) 560-1300 Fax (760) 560-1301 email vccsales@vccite.com	
FINISH BREAK ALL CORNERS AND SHARP EDGES 90° MIN		FINISH		TITLE: 5MM ROUND LITEPIPE	
THIRD ANGLE PROJECTION		SEE NOTES		APPROVAL	
* PROPRIETARY AND CONFIDENTIAL THE INFORMATION CONTAINED IN THIS DRAWING IS THE SOLE PROPERTY OF VISUAL COMMUNICATIONS COMPANY, INC. AND IS TO BE USED ONLY FOR THE PURPOSES SPECIFIED IN THIS DRAWING. ANY REPRODUCTION IN PART OR AS A WHOLE WITHOUT THE WRITTEN CONSENT OF VISUAL COMMUNICATIONS COMPANY, INC. IS PROHIBITED.		DRAWN K.Howard		DATE 4/23/10	
DO NOT SCALE DRAWING		CHECKED DPZ		DATE 5/4/10	
		SIZE		DWG. NO.	
		B		LCV XXX CTP	
		SCALE: 6:1		REV 001	
		SHEET 1 OF 1			