



Chipsmall Limited consists of a professional team with an average of over 10 year of expertise in the distribution of electronic components. Based in Hongkong, we have already established firm and mutual-benefit business relationships with customers from,Europe,America and south Asia,supplying obsolete and hard-to-find components to meet their specific needs.

With the principle of "Quality Parts,Customers Priority,Honest Operation,and Considerate Service",our business mainly focus on the distribution of electronic components. Line cards we deal with include Microchip,ALPS,ROHM,Xilinx,Pulse,ON,Everlight and Freescale. Main products comprise IC,Modules,Potentiometer,IC Socket,Relay,Connector.Our parts cover such applications as commercial,industrial, and automotives areas.

We are looking forward to setting up business relationship with you and hope to provide you with the best service and solution. Let us make a better world for our industry!



Contact us

Tel: +86-755-8981 8866 Fax: +86-755-8427 6832

Email & Skype: info@chipsmall.com Web: www.chipsmall.com

Address: A1208, Overseas Decoration Building, #122 Zhenhua RD., Futian, Shenzhen, China

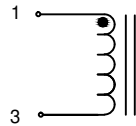


LDZ2817220K-10

PHYSICAL DIMENSIONS:

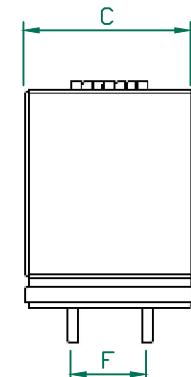
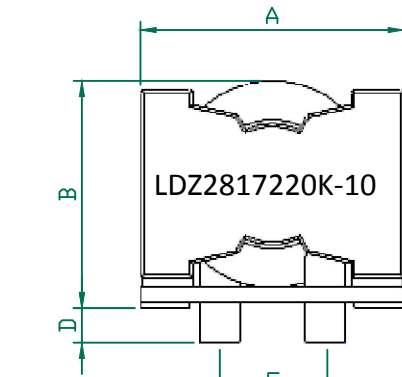
A	27.00	±	0.50
B	23.00		MAX.
C	17.00		MAX.
D	3.50	±	0.30
E	10.50	±	0.50
F	7.10	±	0.50
G	3.81	±	0.30
H	0.80	±	0.15

SCHEMATIC

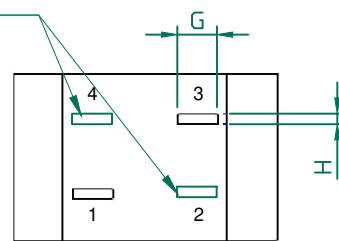


ELECTRICAL SPECIFICATION @ 25°C

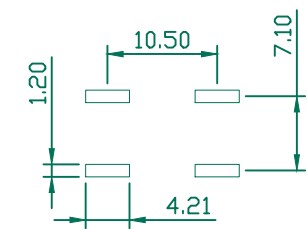
ELECTRICAL CHARACTERISTICS		MIN	NOM	MAX
INDUCTANCE L @ 300 KHz/0.1V ±10%	uH	19.8	22.0	24.2
DCR	Ω	---	0.0026	0.003
I SAT(A)	A	---	---	16.4
I RMS(A)	A	---	---	26



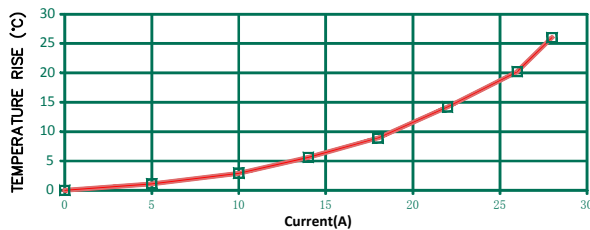
DUMMY



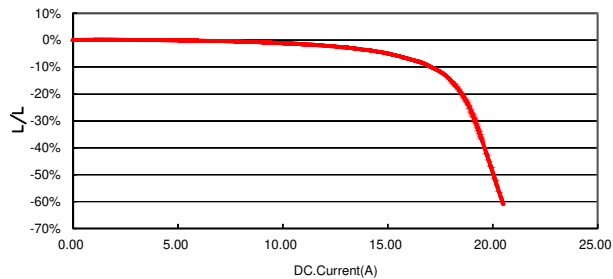
SUGGESTED PAD LAYOUT



Temp Vs Current



Current vs inductance



NOTES: UNLESS OTHERWISE SPECIFIED

1. OPERATION TEMPERATURE RANGE: -40°C~+125°C(INCLUDING SELF-HEATING).
2. STORAGE TEMPERATURE RANGE: -40°C~+125°C .
3. THE SATURATION CURRENT VALUE (Isat) IS THE DC CURRENT VALUE HAVING INDUCTANCE DORP OFF 30% MAX. (AT 25°C)
4. THE TEMPERATURE RISE CURRENT VALUE (I_{rms}) IS THE DC CURRENT VALUE HAVING TEMPERATURE INCREASE ΔT40°C. (AT 25°C)

REV		DESCRIPTION	DATE	INT	PROJECT/PART NUMBER: LDZ2817220K-10		REV	PART TYPE:	DRAWN BY:
A	ORIGINAL DRAFT	06/24/16	QIU		DATE: 06/24/16		A	NTS	QIU
DIMENSIONS ARE IN mm (INCHES).					This print is the property of Laird Tech. and is loaned in confidence subject to return upon request and with the understanding that no copies shall be made without the written consent of Laird Tech. All rights to design or invention are reserved.		SCALE: NTS		SHEET: 1 of 1
					CAD # LDZ2817220K-10-A		TOOL # -		

