



Chipsmall Limited consists of a professional team with an average of over 10 year of expertise in the distribution of electronic components. Based in Hongkong, we have already established firm and mutual-benefit business relationships with customers from,Europe,America and south Asia,supplying obsolete and hard-to-find components to meet their specific needs.

With the principle of “Quality Parts,Customers Priority,Honest Operation,and Considerate Service”,our business mainly focus on the distribution of electronic components. Line cards we deal with include Microchip,ALPS,ROHM,Xilinx,Pulse,ON,Everlight and Freescale. Main products comprise IC,Modules,Potentiometer,IC Socket,Relay,Connector.Our parts cover such applications as commercial,industrial, and automotives areas.

We are looking forward to setting up business relationship with you and hope to provide you with the best service and solution. Let us make a better world for our industry!



Contact us

Tel: +86-755-8981 8866 Fax: +86-755-8427 6832

Email & Skype: info@chipsmall.com Web: www.chipsmall.com

Address: A1208, Overseas Decoration Building, #122 Zhenhua RD., Futian, Shenzhen, China

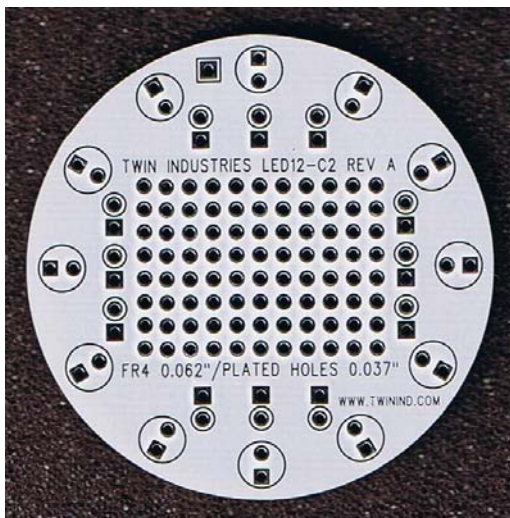




Twin Industries LED-series prototyping boards provide a versatile solution for LED projects. The boards have white soldermask to enhance LED luminosity, common bus power trace, locations for resistors to control individual LEDs, prototyping area for drivers, and locations for other components.

FEATURES:

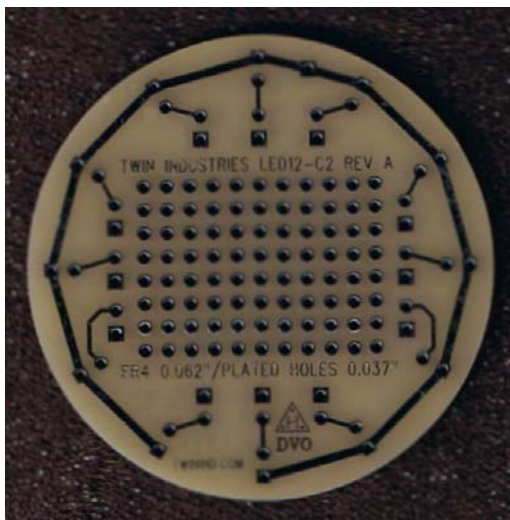
- FR4 laminate, 0.062" thick
- Prototyping holes spaced on a 0.1" x 0.1" grid
- Hole interior diameter = 0.037"
- Plated through holes with pads on both sides of board



PART NUMBER

LED12-C2 (front view)

Board size: 2.0" circle



PART NUMBER

LED12-C2 (rear view)

Board size: 2.0" circle

For additional product information, please visit www.twindind.com

Contact information: 925-866-8946 (phone) 925-866-8937 (fax) Sales@twindind.com