



Chipsmall Limited consists of a professional team with an average of over 10 year of expertise in the distribution of electronic components. Based in Hongkong, we have already established firm and mutual-benefit business relationships with customers from,Europe,America and south Asia,supplying obsolete and hard-to-find components to meet their specific needs.

With the principle of “Quality Parts,Customers Priority,Honest Operation,and Considerate Service”,our business mainly focus on the distribution of electronic components. Line cards we deal with include Microchip,ALPS,ROHM,Xilinx,Pulse,ON,Everlight and Freescale. Main products comprise IC,Modules,Potentiometer,IC Socket,Relay,Connector.Our parts cover such applications as commercial,industrial, and automotives areas.

We are looking forward to setting up business relationship with you and hope to provide you with the best service and solution. Let us make a better world for our industry!



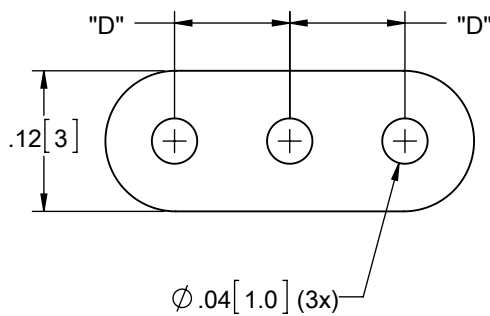
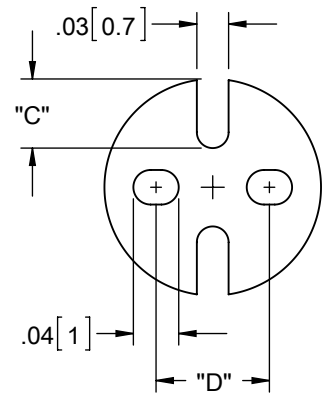
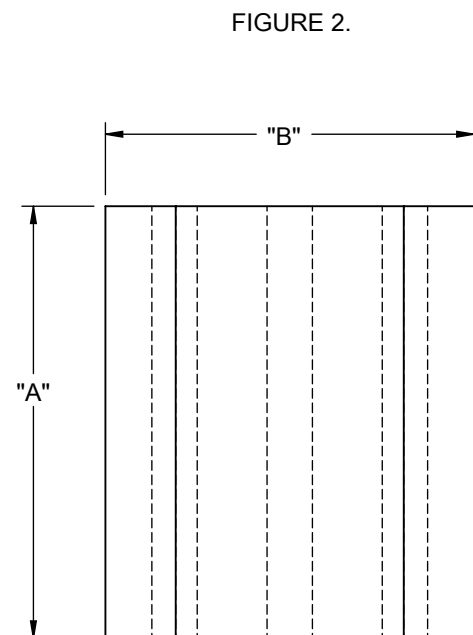
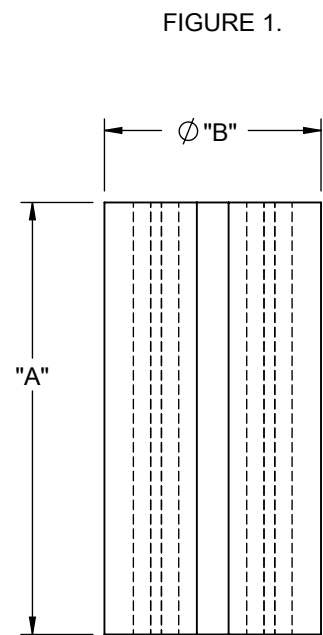
Contact us

Tel: +86-755-8981 8866 Fax: +86-755-8427 6832

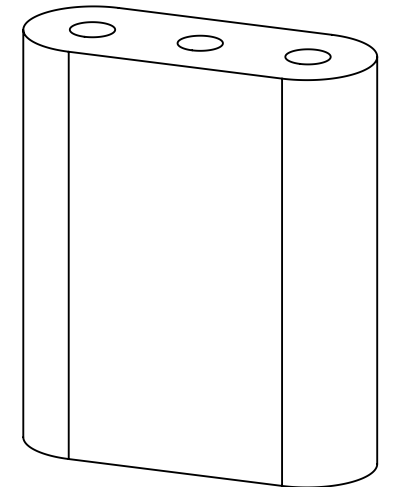
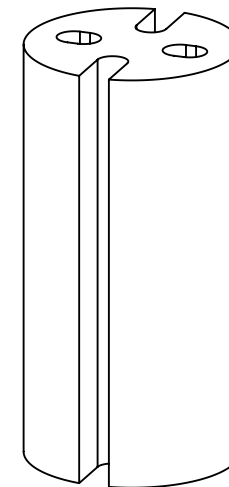
Email & Skype: info@chipsmall.com Web: www.chipsmall.com

Address: A1208, Overseas Decoration Building, #122 Zhenhua RD., Futian, Shenzhen, China





PART NO.	"A"±.020	"B"±.020	"C"	"D"	LED TYPE	MATERIAL	FIGURE NO.
LEDS1-3-26	3/16 [4.8]	.156 [4]	.047 [1.2]	.06 [1.5]	T-1	FLEXIBLE PVC (RMS-388), COLOR: BLACK	1
LEDS1-4-26	1/4 [6.4]						
LEDS1-6-26	3/8 [9.5]						
LEDS1-8-26	1/2 [12.7]						
LEDS1-10-26	5/8 [15.9]						
LEDS1-12-26	3/4 [19.1]						
LEDS1-14-26	7/8 [22.2]	.188 [4.8]	.060 [1.5]	.10 [2.5]	T-1 3/4	FLEXIBLE PVC (RMS-26), COLOR: BLACK	2
LEDS2-3-26	3/16 [4.8]						
LEDS2-4-26	1/4 [6.4]						
LEDS2-6-26	3/8 [9.5]						
LEDS2-8-26	1/2 [12.7]						
LEDS2-10-26	5/8 [15.9]						
LEDS2-12-26	3/4 [19.1]	.32 [8.1]	-	.10 [2.5]	T-1 & T-1 3/4	FLEXIBLE PVC (RMS-26), COLOR: BLACK	2
LEDS3-3-26	3/16 [4.8]						
LEDS3-4-26	1/4 [6.4]						
LEDS3-6-26	3/8 [9.5]						
LEDS3-8-26	1/2 [12.7]						
LEDS3-10-26	5/8 [15.9]						
LEDS3-12-26	3/4 [19.1]						



REV.	DESCRIPTION	ENGR.	DATE
H	MATERIAL CHANGE FROM -317 TO -388, ECN#1373	DZ	DEC14,2012
G	REDRAWN, SERIES EXPANSION, CO 200729	SK	OCT20,2011
-	SEE ENGINEERING FOR REV A TO F	---	-----

TITLE: LED SPACERS				UNITS= IN [mm]		FINAL	
CREATED USING SOLIDWORKS	FILE #: LEDS	DWN: SK	APP: -	PART #			
TOLERANCES UNLESS NOTED .XX=±.02 .XXX=±.015 FRAC.=±1/32 ANG.=±1°	SHEET: 1 OF 1 SHEET SIZE: B	DT: 10/13/11	CHKD: -	SEE TABLE		PRINT TYPE	
RE: RICHCO, INC		RICHCO, INC. WWW.RICHCO-INC.COM		CA			