



Chipsmall Limited consists of a professional team with an average of over 10 year of expertise in the distribution of electronic components. Based in Hongkong, we have already established firm and mutual-benefit business relationships with customers from,Europe,America and south Asia,supplying obsolete and hard-to-find components to meet their specific needs.

With the principle of "Quality Parts,Customers Priority,Honest Operation,and Considerate Service",our business mainly focus on the distribution of electronic components. Line cards we deal with include Microchip,ALPS,ROHM,Xilinx,Pulse,ON,Everlight and Freescale. Main products comprise IC,Modules,Potentiometer,IC Socket,Relay,Connector.Our parts cover such applications as commercial,industrial, and automotives areas.

We are looking forward to setting up business relationship with you and hope to provide you with the best service and solution. Let us make a better world for our industry!



## Contact us

Tel: +86-755-8981 8866 Fax: +86-755-8427 6832

Email & Skype: info@chipsmall.com Web: www.chipsmall.com

Address: A1208, Overseas Decoration Building, #122 Zhenhua RD., Futian, Shenzhen, China



# Panduit Non-Metallic Surface Raceway - Quick Reference Guide

## Pan-Way® LD Series

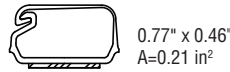
Spec Sheet: **SRSP21**



Example part: LD3IW6-A  
Colors: IW, EI, IG, WH

- One-piece single channel latching design
- Pre-applied adhesive backed tape

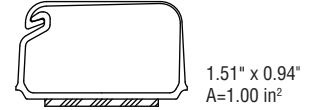
- For routing data and low voltage cabling only (50V or less)
- Available lengths – 6', 8', 10'



**LD3 Series**



**LD5 Series**



**LD10 Series**

## Pan-Way® LDPH Series

Spec Sheet: **SRSP30**



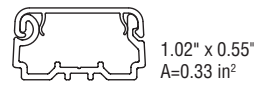
Example part: LDPH3IW8-A  
Colors: IW, EI, IG, WH

- Two-piece single channel latching design
- Pre-applied adhesive backed tape with screw mountable option

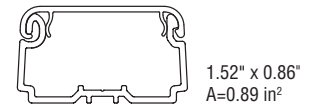
- For routing cables up to 600V
- Available lengths – 8', 10'



**LDPH3 Series**



**LDPH5 Series**



**LDPH10 Series**

## Pan-Way® LDS Series

Spec Sheet: **SRSP25**



Example part: LDS3IW10-A  
Colors: IW, EI, IG, WH

- One-piece single channel tamper resistant design
- Bendable in low voltage applications to route over obstructions

- Pre-applied adhesive backed tape
- For routing cables up to 600V
- Available lengths – 10'



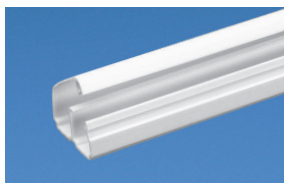
**LDS3 Series**



**LDS5 Series**

## Pan-Way® LD2P Series

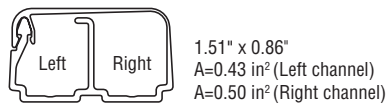
Spec Sheet: **SRSP29**



Example part: LD2P10IW8-A  
Colors: IW, EI, IG, WH

- One-piece dual channel latching design
- Pre-applied adhesive backed tape

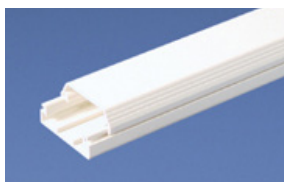
- Routes power and data cables together
- Available lengths – 8', 10'



**LD2P10 Series**

## Pan-Way® T-45 Series

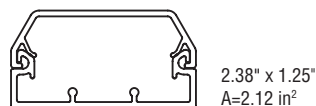
Spec Sheet: **SRSP24**



Example part: T45BIW8-A  
Colors: IW, EI, WH

- Two-piece single channel with snap-in divider design

- Multi-directional cover hinge allows cable installation from either side
- Available with/without adhesive backed tape
- Available lengths – 8', 10'



**T45 Series**

IW

EI

IG

WH

Note: Colors shown may differ slightly from actual raceway colors.  
IW=Off white, EI=Electric Ivory, IG=International Gray, WH=White.

**PANDUIT**®

# Panduit Non-Metallic Surface Raceway - Quick Reference Guide

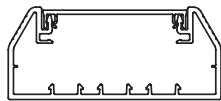
## Pan-Way® T-70 Series

Spec Sheet: **SRSP22**



Example part: T70BIW8  
Colors: IW, EI, WH, IG

- Two-piece single channel with snap-in divider design



4.07" x 1.77"  
A=5.15 in<sup>2</sup>

**T-70 Series**

- Transitions to T-45 and LD profile raceways
- Available lengths – 8', 10'

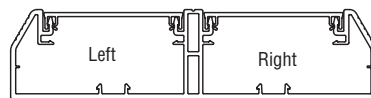
## Pan-Way® Twin-70 Series

Spec Sheet: **SRSP28**



Example part: T702BIW8  
Colors: IW, EI, WH

- Two-piece multi-channel with snap-in divider design



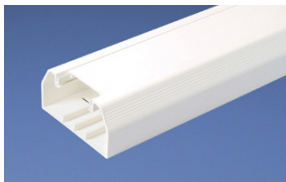
7.23" x 1.77"  
A=4.59 in<sup>2</sup> (Left side)  
A=4.59 in<sup>2</sup> (Right side)

**Twin-70 Series**

- Separate channels allow independent access to power and data cabling
- Available lengths – 8', 10'

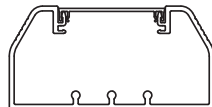
## Pan-Way® TG-70 Series

Spec Sheet: **SRSP31**



Example part: TG70IW8  
Colors: IW, EI, IG

- Two-piece single channel with snap-in divider design



5.32" x 2.68"  
A=10.85 in<sup>2</sup>

**TG-70 Series**

- Transitions to T-45 and LD profile raceways
- Available lengths – 8', 10'

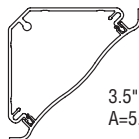
## Pan-Way® Cove Series

Spec Sheet: **SRSP26**



Example part: WCM35BIW8  
Colors: IW

- Two-piece single channel with snap-in divider design



3.5" x 3.5"  
A=5.40 in<sup>2</sup>

**Cove Series**

- Transitions to T-70, T-45 and LD profile raceways
- Used for mounting in between ceiling and wall or between walls
- Available lengths – 8'

## Accessories



**Foam Tape**



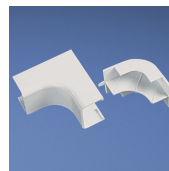
**Pan-Way® Faceplates**



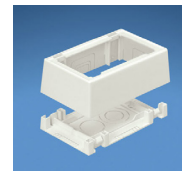
**Low Voltage Fittings**



**One-inch Bend Radius Fittings**



**Power Rated Fittings**



**Pan-Way® Junction Boxes**



**Pan-Way® Surface Raceway Cutting Tool**

<sup>1</sup> Office raceway also available in addition to raceway styles listed. For a complete part listing, visit [www.panduit.com](http://www.panduit.com) for our online catalog.

<sup>2</sup> Color availability varies among styles, and certain colors may be limited to specific lengths.

For more information

Visit us at [www.panduit.com](http://www.panduit.com)

Contact Customer Service by email: [cs@panduit.com](mailto:cs@panduit.com)  
or by phone: 800-777-3300

**PANDUIT®**

©2015 Panduit Corp.  
ALL RIGHTS RESERVED.  
SRSG01--WW-ENG  
6/2015