



Chipsmall Limited consists of a professional team with an average of over 10 year of expertise in the distribution of electronic components. Based in Hongkong, we have already established firm and mutual-benefit business relationships with customers from,Europe,America and south Asia,supplying obsolete and hard-to-find components to meet their specific needs.

With the principle of “Quality Parts,Customers Priority,Honest Operation,and Considerate Service”,our business mainly focus on the distribution of electronic components. Line cards we deal with include Microchip,ALPS,ROHM,Xilinx,Pulse,ON,Everlight and Freescale. Main products comprise IC,Modules,Potentiometer,IC Socket,Relay,Connector.Our parts cover such applications as commercial,industrial, and automotives areas.

We are looking forward to setting up business relationship with you and hope to provide you with the best service and solution. Let us make a better world for our industry!



Contact us

Tel: +86-755-8981 8866 Fax: +86-755-8427 6832

Email & Skype: info@chipsmall.com Web: www.chipsmall.com

Address: A1208, Overseas Decoration Building, #122 Zhenhua RD., Futian, Shenzhen, China



Approved	Checked	Designed	DEVELOPMENT SPECIFICATION							
<i>T. Ikeda</i>	<i>H. Ito</i>	<i>K. Kobayashi</i>	P/N : LN J 1 1 5 W 8 6 R A				1	8		4
T	Y	P	E	Bi-color (Green / Red) Light Emitting Diode						
A P P L I C A T I O N				Indicators						
M A T E R I A L				Green (GaN) / Red(GaAlAs)						
O U T L I N E				Attached						
A B S O L U T E				※1 P	※2 I _{FP}	※3 I _{FIC}	V _R	T _{opr}	T _{stg}	
M A X I M U M				(G) (R)	(G) (R)	(G) (R)	(G) (R)			
R A T I N G S				40 55	50 60	10 20	5 3	-30~+85	-40~+100	
C O N D I T I O N				T _a = 25 ± 3 °C						
Test Specification										
Item		Symbol	Condition			Type	Limit		Unit	
							Min	Max		
Green										
Forward Voltage		V _F	I _F = 5 mA			3.0		3.7	V	
Reverse Leakage Current		I _R	V _R = 5 V					10	μA	
Luminous Intensity ※4		I _o	I _F = 5 mA · DC			34	12.9		mc	
Peak Emission Wavelength		λ _p	I _F = 5 mA · DC			525			nm	
Spectral Line Half Width		Δλ	I _F = 5 mA · DC			45			nm	
Red										
Forward Voltage		V _F	I _F = 10 mA			1.72		2.5	V	
Reverse Leakage Current		I _R	V _R = 3 V					100	μA	
Luminous Intensity ※4		I _o	I _F = 10 mA · DC			6.7	2.8		mc	
Peak Emission Wavelength		λ _p	I _F = 10 mA · DC			655			nm	
Spectral Line Half Width		Δλ	I _F = 10 mA · DC			20			nm	
※1 (G) : Green (R) : Red ※2 The condition of I _{FP} is duty 10 % , pulse width 1 ms. Please contact the Panasonic local office if you design at low current (blow 1mA DC) or pulse current operation and have any questions. ※3 When 2 light emitted at the same time , the total current (I _{FP} or I _{FIC}) must be (G) I _{FP} < 50 mA , I _{FIC} < 9 mA (R) I _{FP} < 60 mA , I _{FIC} < 18 mA ※4 Measurement Tolerance is ±20%. ※5 Compositions of the lead····Cu/Ni/Au plating ※6 Package····Light white diffusion type. ※7 Soldering conditions····Refer to Handling note.										
Jun. 28. 2001										

Approved Checked Designed

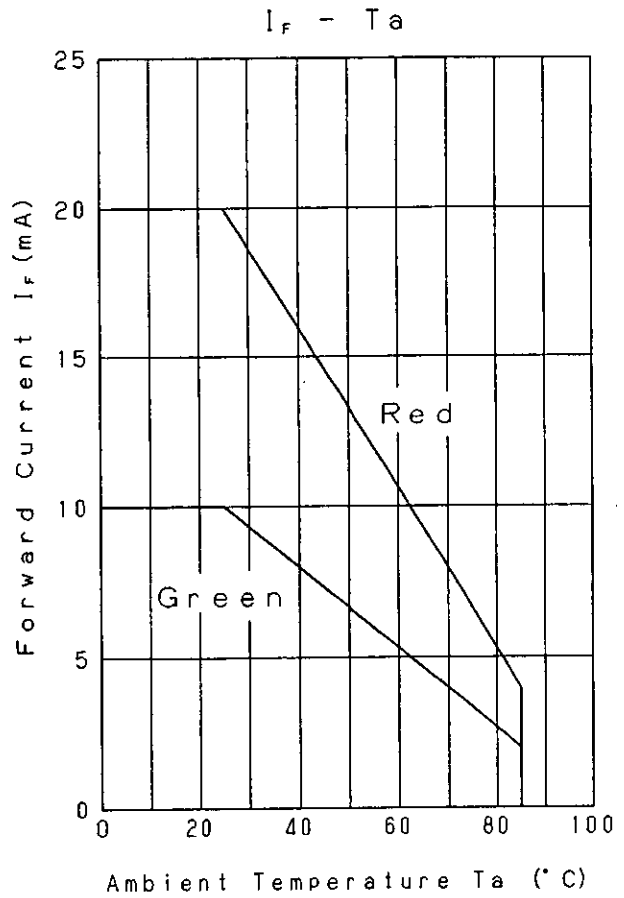
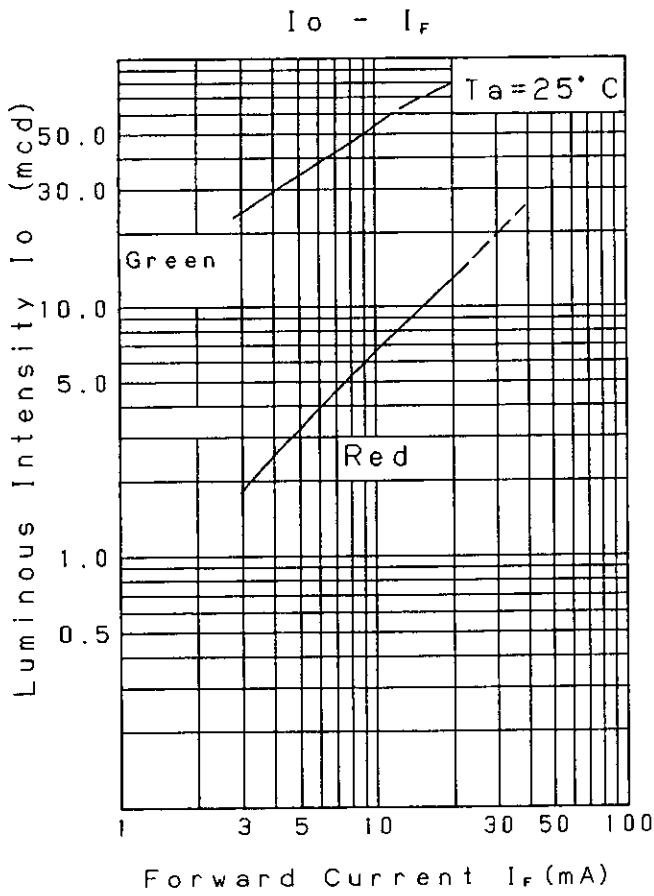
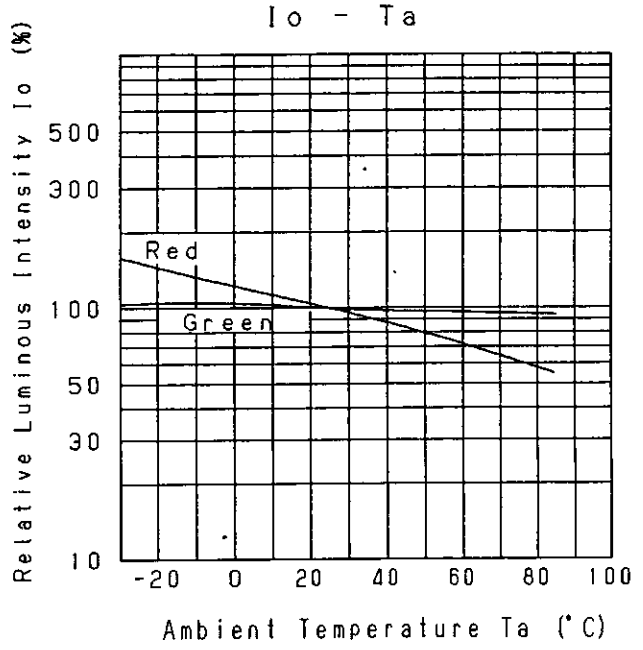
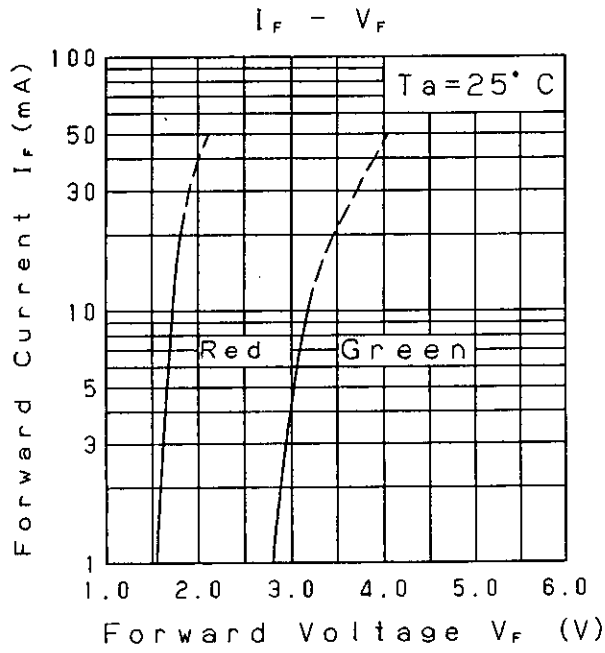
DEVELOPMENT SPECIFICATION

T. Oheda
M. W.
K. Akita

P/N: LNJI15W86RA

18

5



Jun. 28. 2001

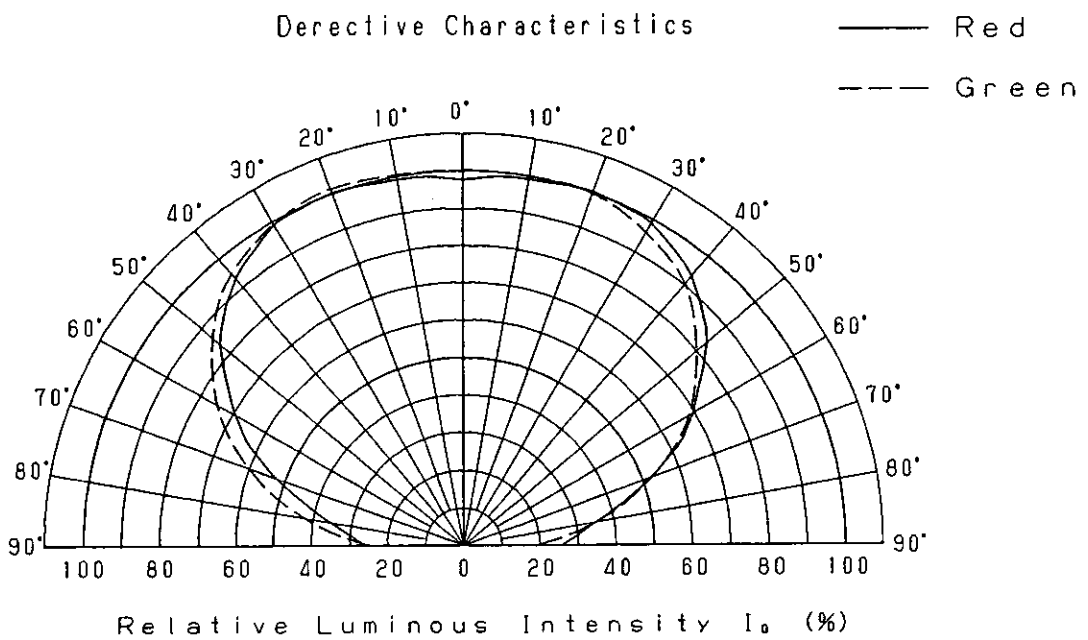
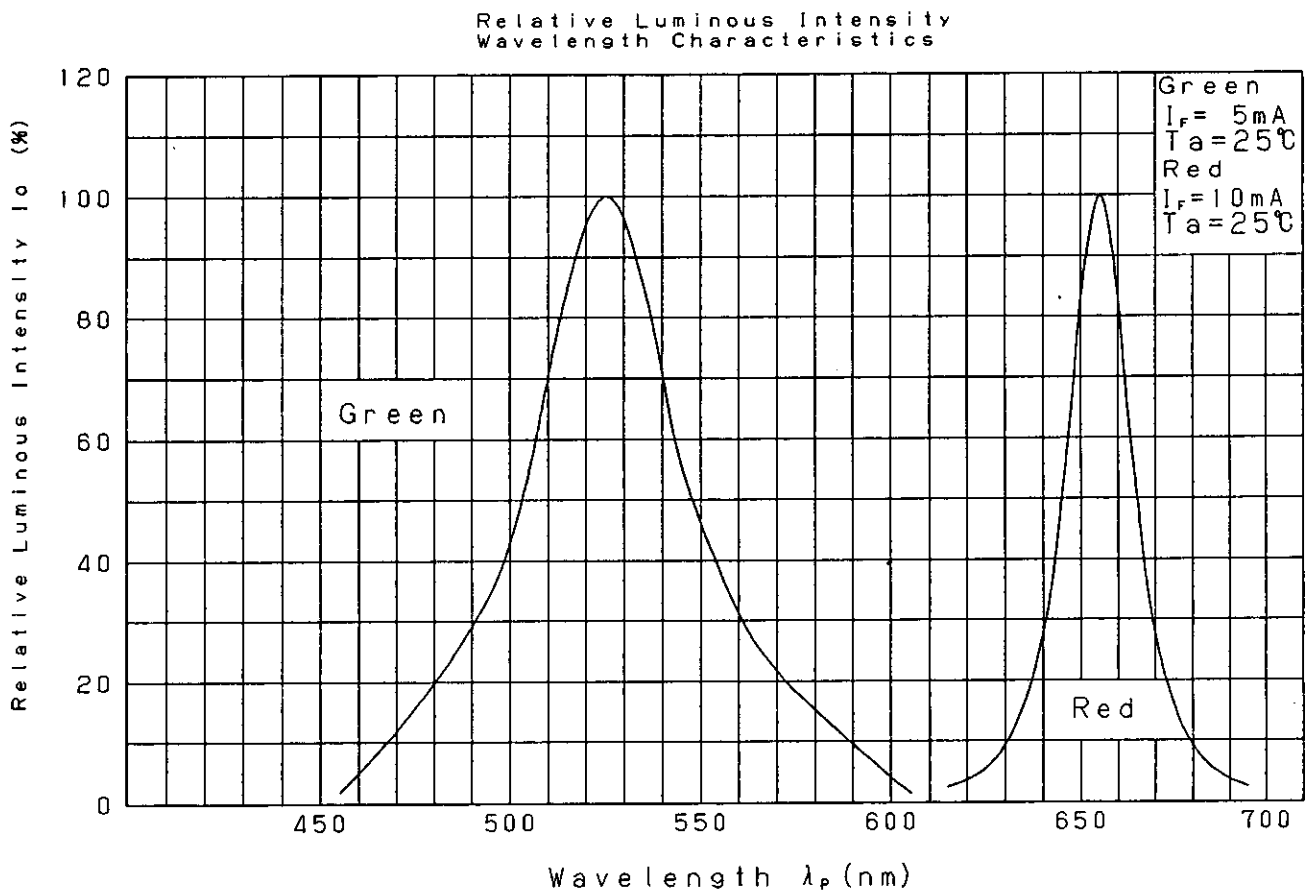
Approved <i>T. Shady</i>	Checked <i>M. W.</i>	Designed <i>K. Sakurai</i>
-----------------------------	-------------------------	-------------------------------

DEVELOPMENT SPECIFICATION

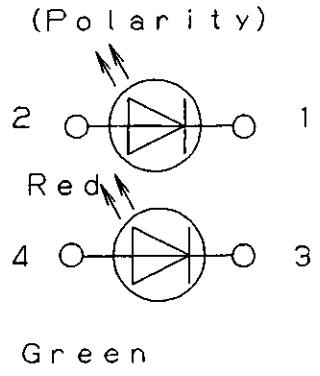
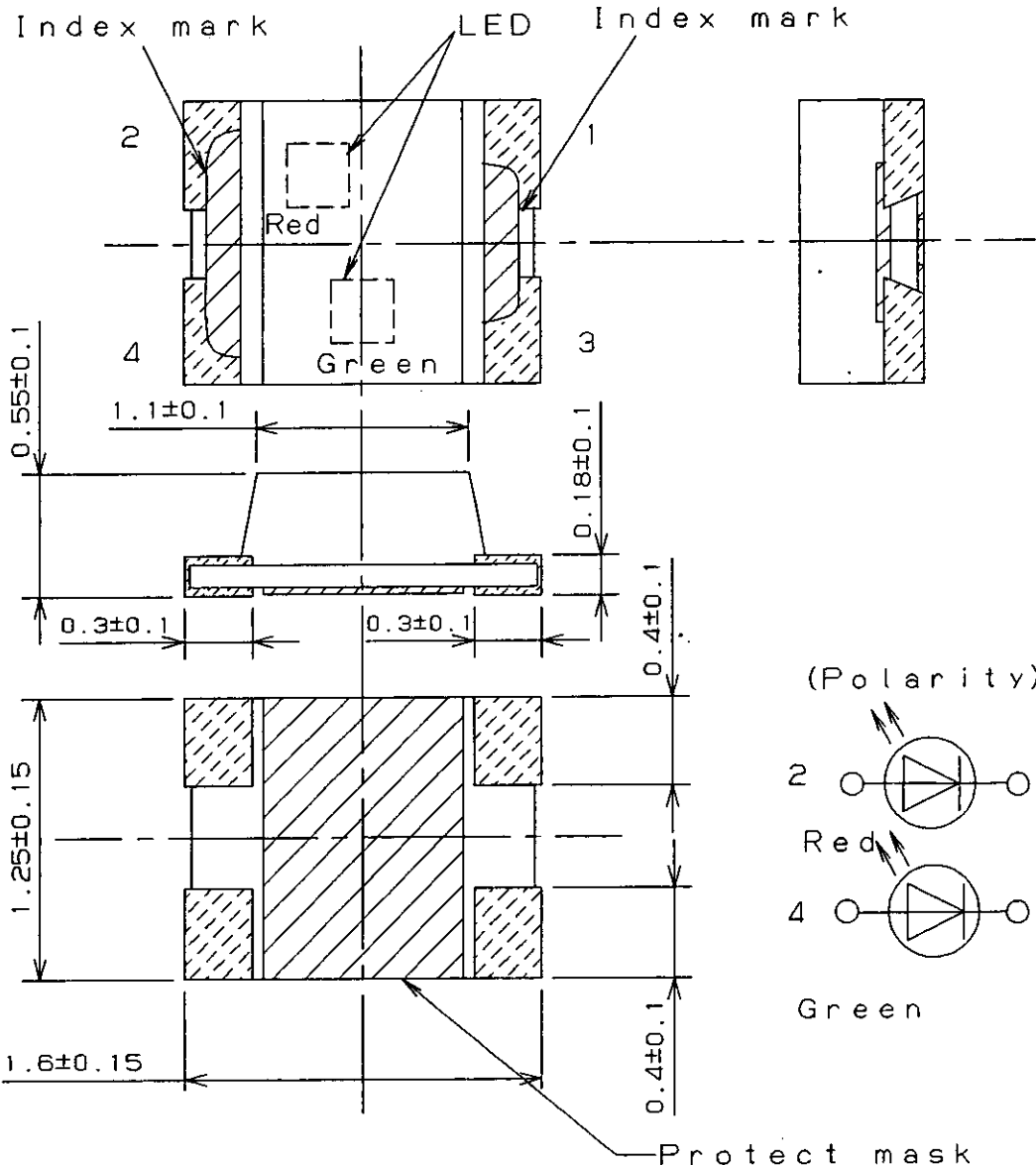
P/N: LNJ115W86RA

18

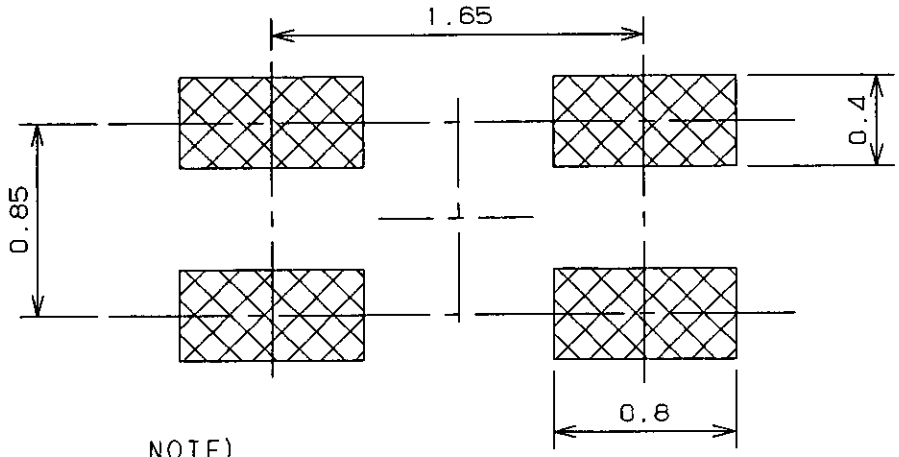
6



Jun. 28. 2001



(Recommended Land Layout)



NOTE)

1. Dimension of package doesn't include projections on electrode.
2. Unit:mm

Jun.28.2001			
-------------	--	--	--