



Chipsmall Limited consists of a professional team with an average of over 10 year of expertise in the distribution of electronic components. Based in Hongkong, we have already established firm and mutual-benefit business relationships with customers from,Europe,America and south Asia,supplying obsolete and hard-to-find components to meet their specific needs.

With the principle of "Quality Parts,Customers Priority,Honest Operation,and Considerate Service",our business mainly focus on the distribution of electronic components. Line cards we deal with include Microchip,ALPS,ROHM,Xilinx,Pulse,ON,Everlight and Freescale. Main products comprise IC,Modules,Potentiometer,IC Socket,Relay,Connector.Our parts cover such applications as commercial,industrial, and automotives areas.

We are looking forward to setting up business relationship with you and hope to provide you with the best service and solution. Let us make a better world for our industry!



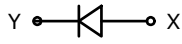
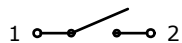
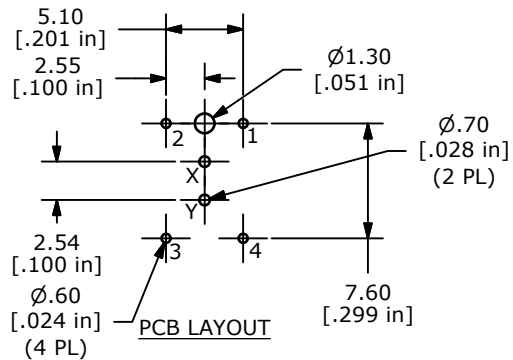
Contact us

Tel: +86-755-8981 8866 Fax: +86-755-8427 6832

Email & Skype: info@chipsmall.com Web: www.chipsmall.com

Address: A1208, Overseas Decoration Building, #122 Zhenhua RD., Futian, Shenzhen, China

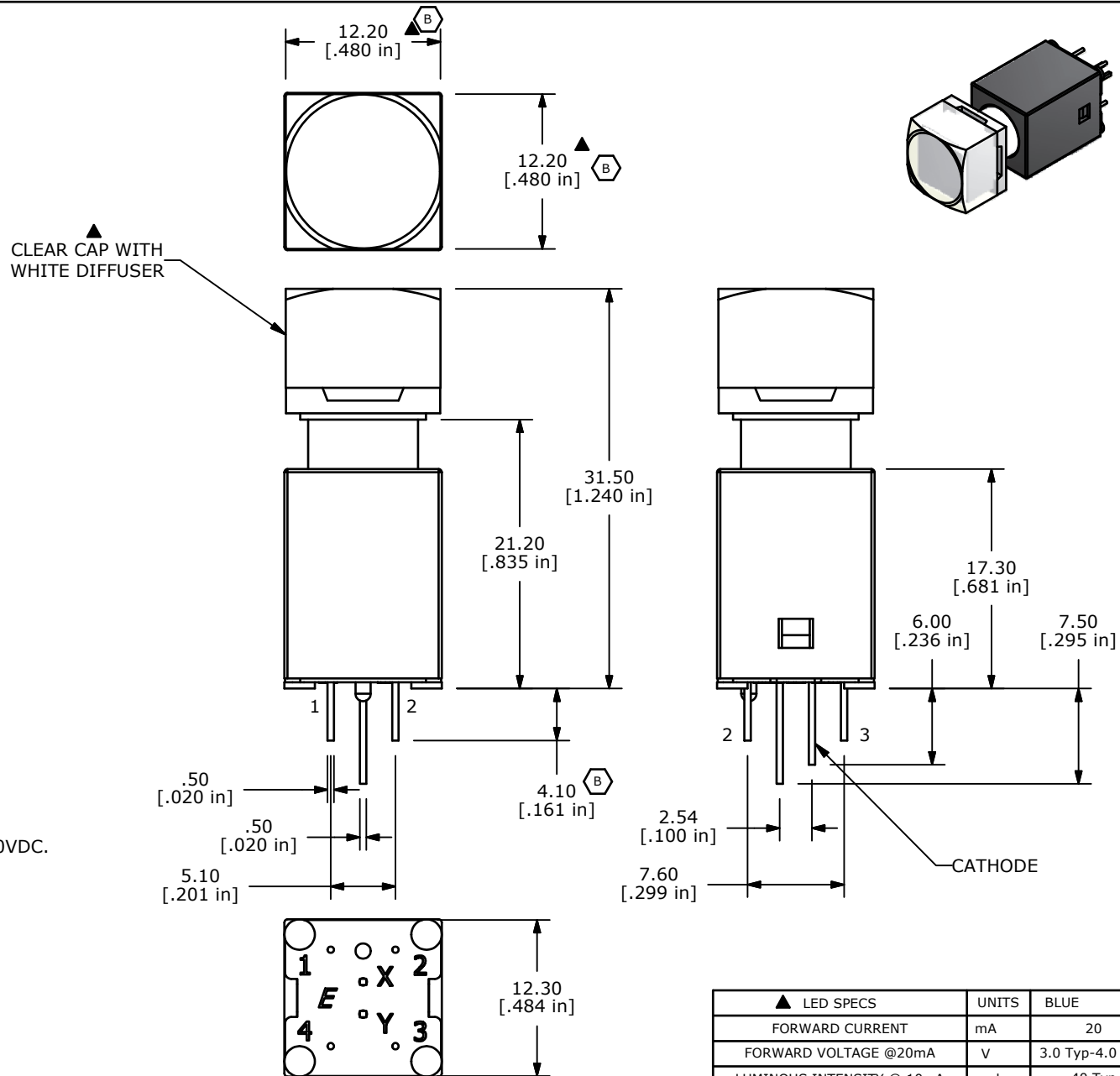




SCHEMATIC ▲

NOTES:

1. ALL DIMENSIONS IN MM [INCH]
2. GENERAL TOLERANCE: $X.X \pm 0.4$
 $X.XX \pm 0.25$
3. TERM. NOS. FOR REFERENCE ONLY.
4. RATING: 20VDC, 100mA MAX; SPST
5. CONTACT RESISTANCE: 150 MILLI-OHM MAX.
6. INSULATION RESISTANCE: 10MEGA-OHM MIN @500VDC.
7. DIELECTRIC STRENGTH: 500VAC FOR 1 MINUTE
8. OPERATING FORCE: $250 \pm x50GF$
9. OPERATING LIFE: 50,000,000 CYCLES
10. OPERATING TEMP: $-5^{\circ}C$ TO $+60^{\circ}C$
11. STORAGE TEMPERATURE: $-40^{\circ}C$ TO $+90^{\circ}C$
12. TOTAL TRAVEL: $3.30mm \pm 0.3$
- ▲13. TRAVEL TO ELECTRICAL MAKE: $2.9 \pm 0.5MM$
- ▲14. LED COLOR: BLUE
15. 2002/95/EC (ROHS) COMPLIANT
16. ▲DENOTES CRITICAL PARAMETER.



▲ LED SPECS	UNITS	BLUE
FORWARD CURRENT	mA	20
FORWARD VOLTAGE @20mA	V	3.0 Typ-4.0 Max
LUMINOUS INTENSITY @ 10mA	mcd	40 Typ

B	19592	CHANGE DIMS: was 4.2 & 12.4	1/17/11	BGL
A	19259	New Release	8/20/10	rc
REV	PCR NO	DESCRIPTION	DATE	BY

THE INFORMATION CONTAINED IN THIS DOCUMENT IS PROPRIETARY
TO E-SWITCH AND IS NOT TO BE COPIED OR TRANSFERRED



E♦SWITCH™

TITLE LP16OA1ASTWB				
SCALE 2:1	DATE 7/29/2010	DR rc	DWG B160000	REV B