



Chipsmall Limited consists of a professional team with an average of over 10 year of expertise in the distribution of electronic components. Based in Hongkong, we have already established firm and mutual-benefit business relationships with customers from,Europe,America and south Asia,supplying obsolete and hard-to-find components to meet their specific needs.

With the principle of “Quality Parts,Customers Priority,Honest Operation,and Considerate Service”,our business mainly focus on the distribution of electronic components. Line cards we deal with include Microchip,ALPS,ROHM,Xilinx,Pulse,ON,Everlight and Freescale. Main products comprise IC,Modules,Potentiometer,IC Socket,Relay,Connector.Our parts cover such applications as commercial,industrial, and automotives areas.

We are looking forward to setting up business relationship with you and hope to provide you with the best service and solution. Let us make a better world for our industry!



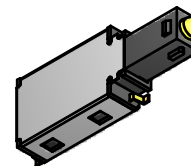
Contact us

Tel: +86-755-8981 8866 Fax: +86-755-8427 6832

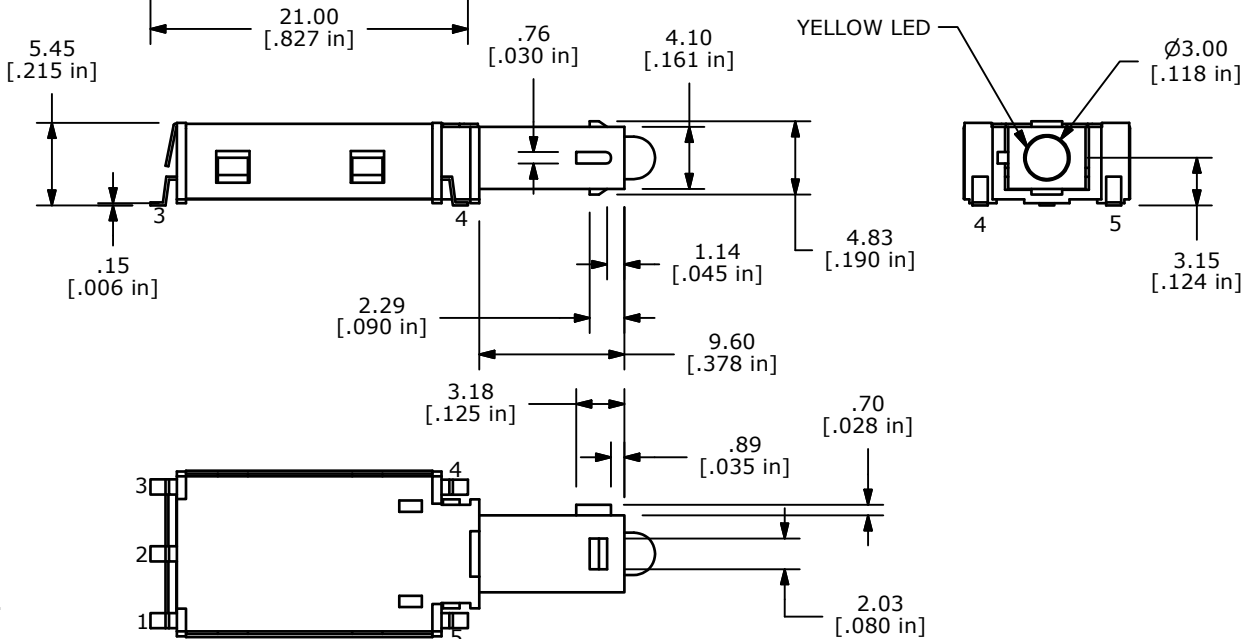
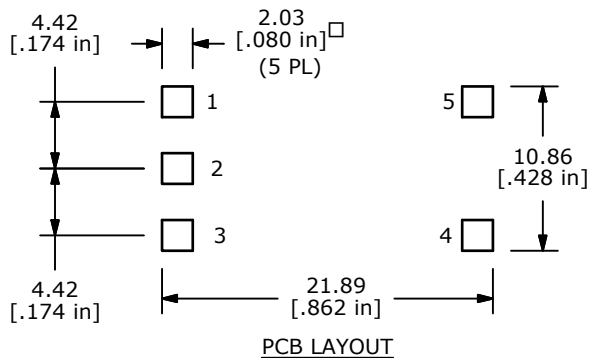
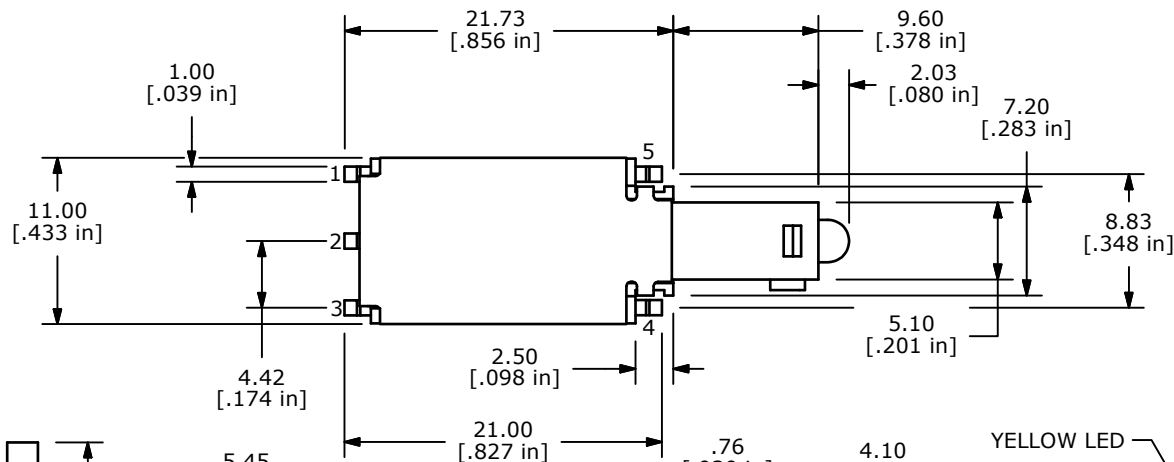
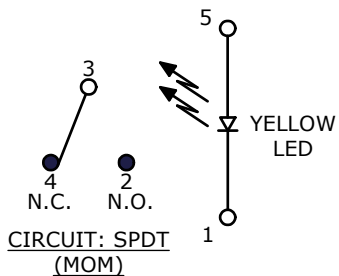
Email & Skype: info@chipsmall.com Web: www.chipsmall.com

Address: A1208, Overseas Decoration Building, #122 Zhenhua RD., Futian, Shenzhen, China





ISOMETRIC



- NOTES:
1. ALL DIMENSIONS IN MM [INCH]
 2. GENERAL TOLERANCE: X.X=±0.4
X.XX=±0.25
 3. TERMINAL NUMBERS FOR REF ONLY
 4. RATING: CURRENT: .01mA-250mA
VOLTAGE: 20mV-50 VDC
 5. OPERATING LIFE: 30,000 MAKE-AND-BREAK CYCLES
 6. INSULATION RESISTANCE: 1000VDC, 1,000 Mega-OHMS MIN.
 - ▲ 7. OPERATING FORCE: 250gf ± 100 GRAMS
 8. OPERATING TEMP.: -30°C to 85°C
 - ▲ 9. TRAVEL: MOMENTARY
FULL TRAVEL 5.1 ± 0.5mm
 10. CONTACT RESISTANCE: 50 Milli-OHMS MAX.
 11. ▲ DENOTES CRITICAL PARAMETER.
 12. 2002/95/EC (ROHS) COMPLIANT
 - ▲ 13. LED COLOR: YELLOW

▲ LED SPECS	UNITS	YELLOW
FORWARD CURRENT	mA	20
FORWARD VOLTAGE @20mA	V	2.1 TYP-2.6 MAX
LUMINOUS INTENSITY @ 20mA	MCD	30



REV	PCR NO	DESCRIPTION	DATE	BY
B	19585	CHANGE DIMS & TEMP.	1/14/11	BGL
A	19040	Release For Production	5/5/10	BLR

TITLE LP370ACGY				
SCALE 2=1	DATE 5/5/2010	DR BLR	DWG T010002	REV B

THE INFORMATION CONTAINED IN THIS DOCUMENT IS PROPRIETARY TO E-SWITCH AND IS NOT TO BE COPIED OR TRANSFERRED