



Chipsmall Limited consists of a professional team with an average of over 10 year of expertise in the distribution of electronic components. Based in Hongkong, we have already established firm and mutual-benefit business relationships with customers from,Europe,America and south Asia,supplying obsolete and hard-to-find components to meet their specific needs.

With the principle of “Quality Parts,Customers Priority,Honest Operation,and Considerate Service”,our business mainly focus on the distribution of electronic components. Line cards we deal with include Microchip,ALPS,ROHM,Xilinx,Pulse,ON,Everlight and Freescale. Main products comprise IC,Modules,Potentiometer,IC Socket,Relay,Connector.Our parts cover such applications as commercial,industrial, and automotives areas.

We are looking forward to setting up business relationship with you and hope to provide you with the best service and solution. Let us make a better world for our industry!



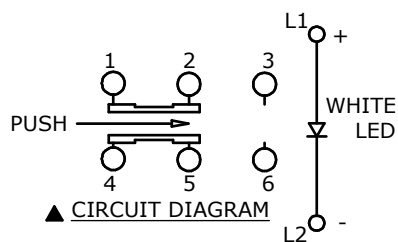
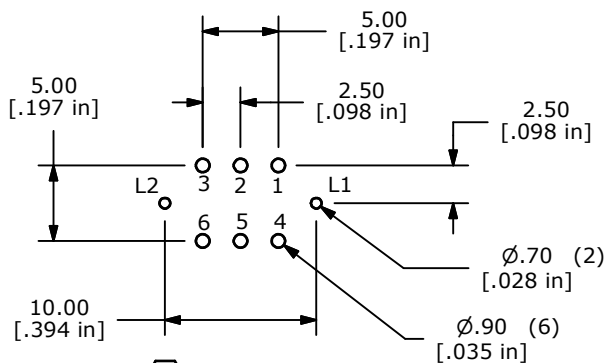
Contact us

Tel: +86-755-8981 8866 Fax: +86-755-8427 6832

Email & Skype: info@chipsmall.com Web: www.chipsmall.com

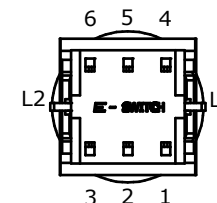
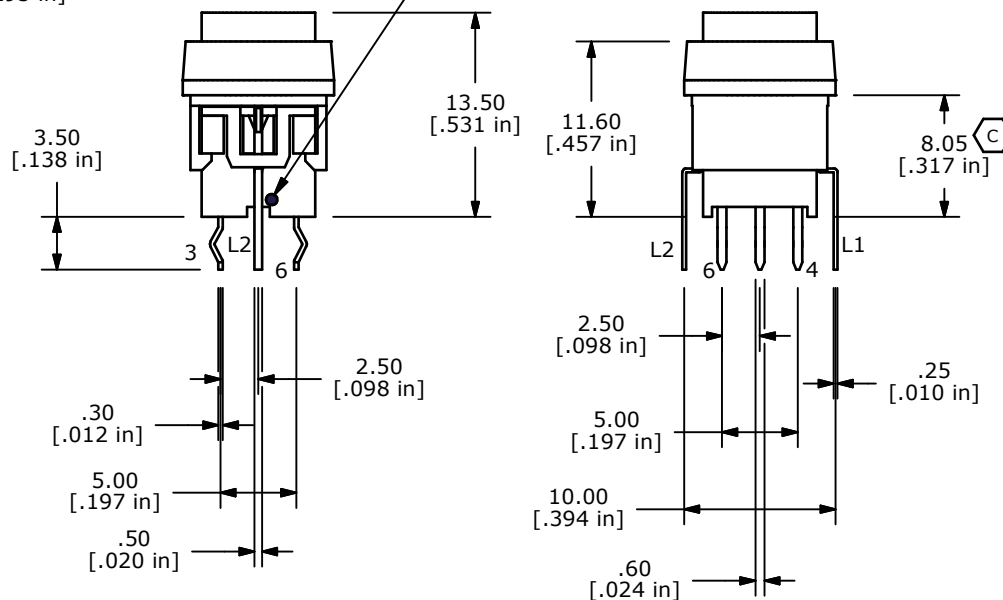
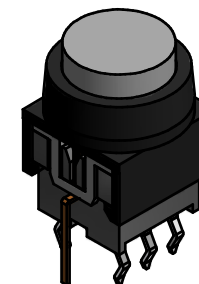
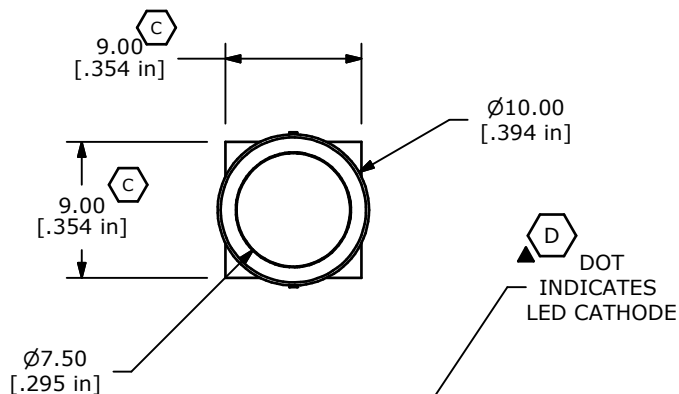
Address: A1208, Overseas Decoration Building, #122 Zhenhua RD., Futian, Shenzhen, China





NOTES:

1. ALL DIMENSIONS IN MM [INCH]
2. GENERAL TOLERANCE: X.X=±0.4
X.XX=±0.25
3. TERMINAL NUMBERS FOR REF ONLY
4. CONTACT RATING: CURRENT: 100mA
VOLTAGE: 30 VDC
5. OPERATING LIFE: 50,000 MAKE-AND-BREAK CYCLES
6. INSULATION RESISTANCE: 500VDC, 100M OHM. MIN.
7. OPERATING FORCE: 250gf ± 100 GRAMS
8. OPERATING TEMP.: -20°C to 70°C
- ▲ 9. TRAVEL: MOMENTARY
1.50 ± 0.3mm FULL TRAVEL
10. CONTACT RESISTANCE: 50 m OHM. MAX.
11. ▲ DENOTES CRITICAL PARAMETER.
12. 2002/95/EC (ROHS) COMPLIANT
- ▲ 13. LED COLOR: WHITE



| LED SPECS | UNITS | WHITE |
|---------------------------|-------|---------|
| FORWARD CURRENT | mA | 20 |
| FORWARD VOLTAGE @20mA | V | 3.5-4.0 |
| LUMINOUS INTENSITY @ 10mA | MCD | 2700 |

| | | | | |
|-----|--------|----------------------------------|----------|-----|
| D | 20994 | REMOVE "WHITE" FROM LED DOT NOTE | 1/30/13 | EBP |
| C | 19602 | DRAWING UPDATE | 1/19/11 | BGL |
| B | 18414 | PCB LAYOUT SECTION FIXED | 2/19/09 | BLR |
| A | 18361 | RELEASE FOR PRODUCTION | 12/22/08 | BLR |
| REV | PCR NO | DESCRIPTION | DATE | BY |

THE INFORMATION CONTAINED IN THIS DOCUMENT IS PROPRIETARY TO E-SWITCH AND IS NOT TO BE COPIED OR TRANSFERRED

| | | | | |
|-------------------|-------|------|-----------|-----|
| | | | | |
| TITLE LP40A1PBBTW | | | | |
| SCALE | 2 = 1 | DATE | 2/19/2009 | DR |
| | | | BLR | DWG |
| | | | B240017 | REV |
| | | | | D |