



Chipsmall Limited consists of a professional team with an average of over 10 year of expertise in the distribution of electronic components. Based in Hongkong, we have already established firm and mutual-benefit business relationships with customers from,Europe,America and south Asia,supplying obsolete and hard-to-find components to meet their specific needs.

With the principle of “Quality Parts,Customers Priority,Honest Operation,and Considerate Service”,our business mainly focus on the distribution of electronic components. Line cards we deal with include Microchip,ALPS,ROHM,Xilinx,Pulse,ON,Everlight and Freescale. Main products comprise IC,Modules,Potentiometer,IC Socket,Relay,Connector.Our parts cover such applications as commercial,industrial, and automotives areas.

We are looking forward to setting up business relationship with you and hope to provide you with the best service and solution. Let us make a better world for our industry!



Contact us

Tel: +86-755-8981 8866 Fax: +86-755-8427 6832

Email & Skype: info@chipsmall.com Web: www.chipsmall.com

Address: A1208, Overseas Decoration Building, #122 Zhenhua RD., Futian, Shenzhen, China



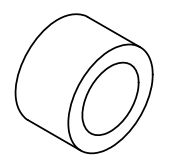
8 7 6 5 4 3 2 1

NOTES:

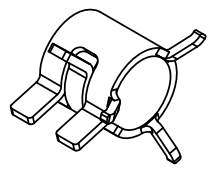
1. MOUNTING: Panel mounting hole .171" (4.34mm) Diameter
 Lite pipe from .200" to .500" use grommet retainer RIN 150
 Lite pipe from .500" to 2.00" the spring retainer RIN 250 is recommended for rigidity
2. Standoff used to adjust the height of a standard LED above the PCB to maintain a maximum .050" clearance between Lite pipe and LED.
3. U.S. & Foreign Pat Issued & Pend.

REVISIONS				
ECN #	REV	DESCRIPTION	DATE	INITIALS
	N/A	INITIAL RELEASE	8/25/98	JS
	1	UPDATE DWG FORMAT	12/15/08	JG
	2	REVISE .170" DIMENSION TO TOLERANCES	3/11/09	AZ
	001	REVISED PER EC R111009AZ01	4/23/10	KH

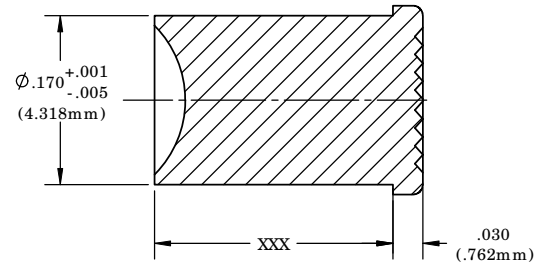
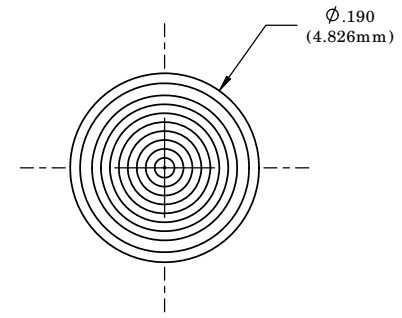
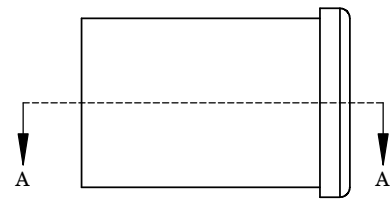
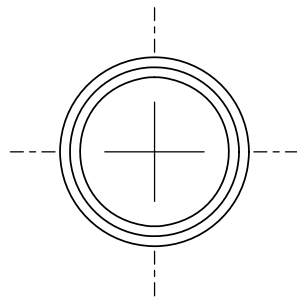
**RETAINERS
(ORDER SEPARATELY)**



RIN 150



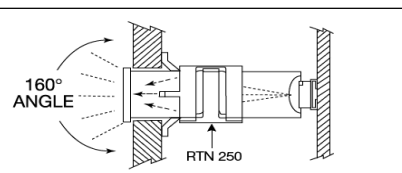
RIN 250



ORDERING CODE IPC XXX CTP

LENGTH CODE (Min 020=.200" / Max 200=2.000")									
020	038	056	074	092	112	135	157	180	
022	040	058	076	094	115	137	160	182	
024	042	060	078	096	117	140	162	185	
026	044	062	080	098	120	142	165	187	
028	046	064	082	100	122	145	167	190	
030	048	066	084	102	125	147	170	192	
032	050	068	086	105	127	150	172	195	
034	052	070	088	107	130	152	175	197	
036	054	072	090	110	132	155	177	200	

COLOR	
CTP	CLEAR



SECTION A-A

<small>UNLESS OTHERWISE SPECIFIED DIMENSIONS ARE IN INCHES</small> ANGLES DECIMALS ±1° X ±.020 FINISH XXX ±.010 XXX ±.005 BREAK ALL CORNERS AND SHARP EDGES 90° MIN	MATERIAL ACRYLIC (OPTICAL GRADE) UL 94-HB	VISUAL COMMUNICATIONS COMPANY, INC. 190 Bossick Boulevard, Suite 101 San Marcos, CA 92069 USA Phone (760) 560-1300 Fax (760) 560-1301 email vccsales@vccite.com
	FINISH SEE NOTES	TITLE: CLIPLITE 4MM LITEPIPE VERTICAL
THIRD ANGLE PROJECTION <small>THE INFORMATION CONTAINED IN THIS DRAWING IS THE SOLE PROPERTY OF VISUAL COMMUNICATIONS COMPANY, INC. AND IS LOANED TO YOU AS A SINGLE REFERENCE TO THE DRAWING. IT IS NOT TO BE REPRODUCED OR TRANSMITTED IN ANY FORM OR BY ANY MEANS, ELECTRONIC OR MECHANICAL, INCLUDING PHOTOCOPYING, RECORDING, OR BY ANY INFORMATION STORAGE AND RETRIEVAL SYSTEM.</small>	APPROVAL DRAWN K.Howard 4/23/10 CHECKED DPZ 5/4/10	DATE 4/23/10 5/4/10
DO NOT SCALE DRAWING	SIZE DWG. NO. B LPC XXX CTP	REV 001
	SCALE: 8:1	SHEET 1 OF 1

8 7 6 5 4 3 2 1