



Chipsmall Limited consists of a professional team with an average of over 10 year of expertise in the distribution of electronic components. Based in Hongkong, we have already established firm and mutual-benefit business relationships with customers from,Europe,America and south Asia,supplying obsolete and hard-to-find components to meet their specific needs.

With the principle of “Quality Parts,Customers Priority,Honest Operation,and Considerate Service”,our business mainly focus on the distribution of electronic components. Line cards we deal with include Microchip,ALPS,ROHM,Xilinx,Pulse,ON,Everlight and Freescale. Main products comprise IC,Modules,Potentiometer,IC Socket,Relay,Connector.Our parts cover such applications as commercial,industrial, and automotives areas.

We are looking forward to setting up business relationship with you and hope to provide you with the best service and solution. Let us make a better world for our industry!



Contact us

Tel: +86-755-8981 8866 Fax: +86-755-8427 6832

Email & Skype: info@chipsmall.com Web: www.chipsmall.com

Address: A1208, Overseas Decoration Building, #122 Zhenhua RD., Futian, Shenzhen, China



DESIGNED & DIMENSIONED
IN MILLIMETERS [INCHES]

LPHT-XX-XX-X-RTX-XX

DO NOT
SCALE FROM
THIS PRINT

POWER POS (TOTAL)

-02, -04, -06, -08,
-10, *-12, *-14

SIGNAL POS (TOTAL)

*-12, -16, -20, -24,
-28, -32, *-36, *-40

PLATING SPECIFICATION

-L: 10 μ" SELECTIVE GOLD IN CONTACT
AREA. MATTE TIN ON TAIL
-S: 30 μ" SELECTIVE GOLD IN CONTACT
AREA. MATTE TIN ON TAIL

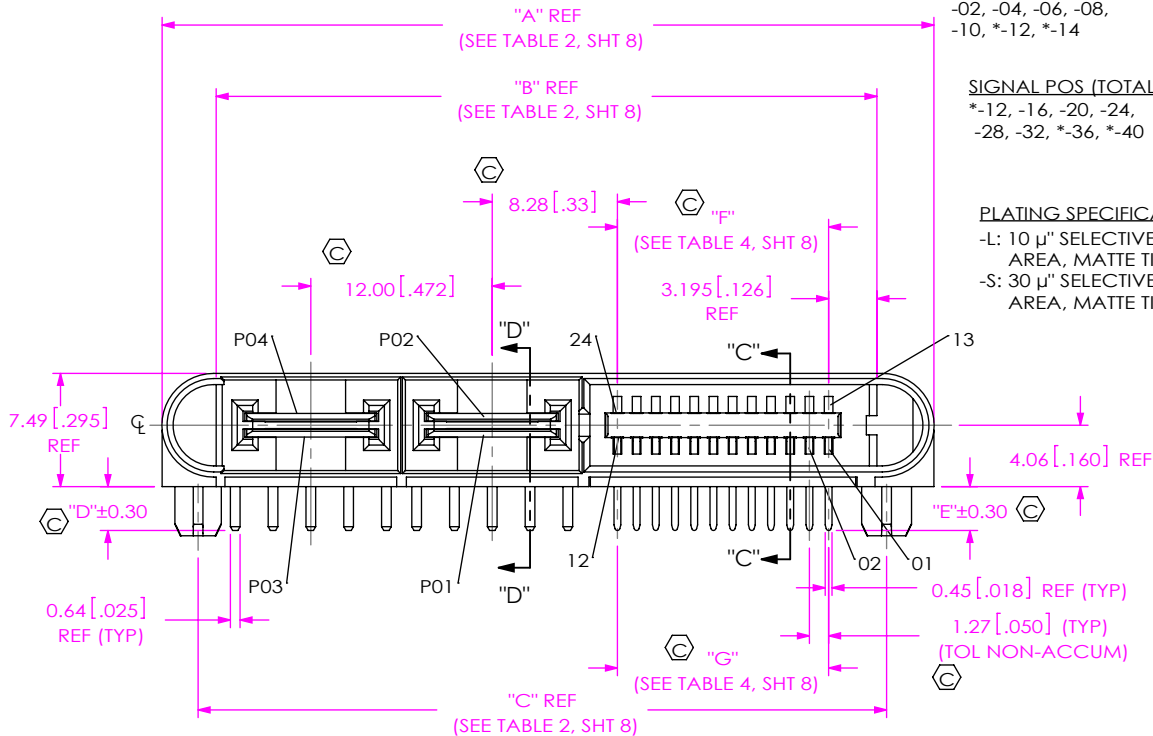
OPTIONS

-GP: GUIDE POSTS
(LEAVE BLANK FOR NO -GP OPTION)
-BLANK: NO GP OPTION
*-HS: HOT SWAP
(ONE BANK OF OUTER POWER POS ARE
LONG PINS, POWER PIN ONLY)
(NOT AVAILABLE ON -02 POWER POS)
(LEAVE BLANK FOR NO HOT SWAP)

TAIL

-RT1: RA-TH, 1.58[.062] BOARD
-RT2: RA-TH, 2.36[.093] BOARD

(* = NOT TOOLED)



LPHT-04-24-X-RTX-GP

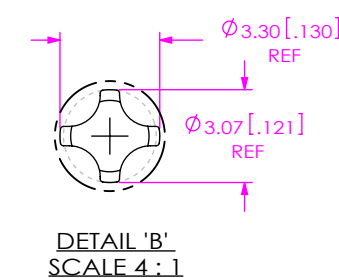
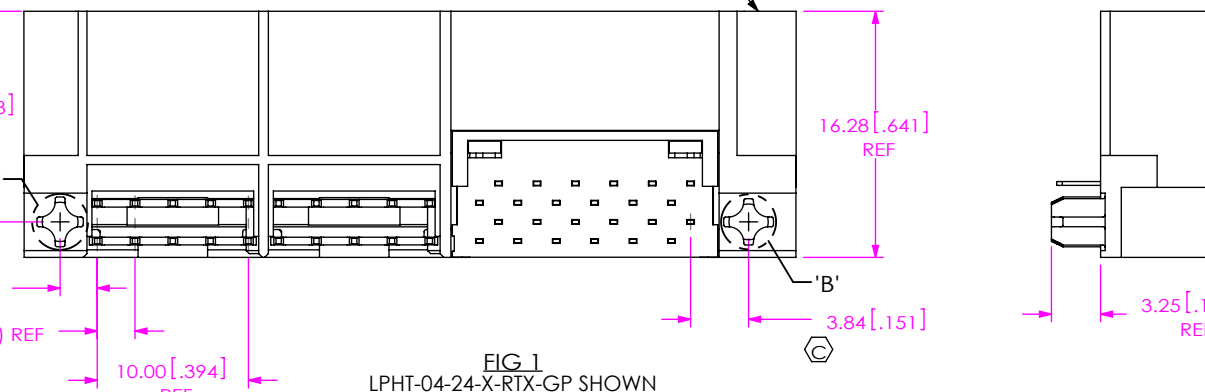
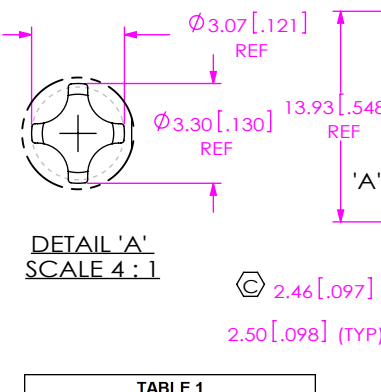
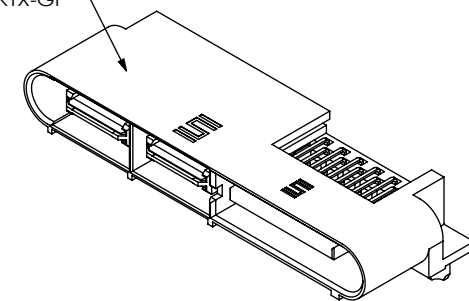


TABLE 1		
TAIL	"D"	"E"
-RT1	2.90 [.114]	2.90 [.114]
-RT2	3.60 [.142]	3.60 [.142]

- NOTES:
- ⊕ REPRESENTS A CRITICAL DIMENSION.
 - MINIMUM PUSHOUT FORCE: SIGNAL PIN: 0.5 LBS, POWER PIN: 3.0 LBS.
 - MAXIMUM ALLOWABLE BOW: 0.15[.006] MM/MM AFTER ASSEMBLY.
 - MAXIMUM BURR ON SHEARED TAILS: 0.10[.004].
 - ALL P/N'S REQUIRE PRESSING TO PCB DUE TO ALIGNMENT PEGS, CONTACT SAMTEC FOR REQUIRED FIXTURES.
 - ASSEMBLIES TO BE PACKAGED IN TRAYS.

UNLESS OTHERWISE SPECIFIED,
DIMENSIONS ARE IN MILLIMETERS.
TOLERANCES ARE:
DECIMALS ANGLES
X.X: ±0.3 [01] 2°
X.XX: ±0.13 [005]
X.XXX: ±0.051 [0020]

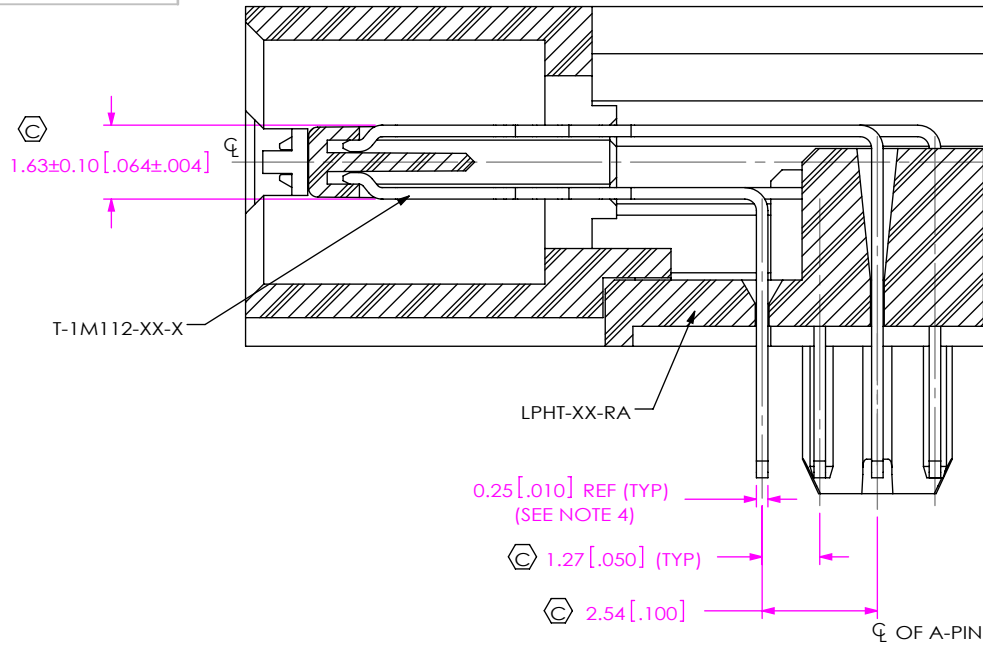
PROPRIETARY NOTE
 THIS DOCUMENT CONTAINS CONFIDENTIAL AND
 PROPRIETARY INFORMATION AND ALL DESIGN,
 MANUFACTURING, REPRODUCTION, USE, PATENT RIGHTS
 AND SALES RIGHTS ARE EXPRESSLY RESERVED BY SAMTEC,
 INC. THIS DOCUMENT SHALL NOT BE DISCLOSED, IN WHOLE
 OR PART, TO ANY UNAUTHORIZED PERSON OR ENTITY NOR
 REPRODUCED, TRANSFERRED OR INCORPORATED IN ANY
 OTHER PROJECT IN ANY MANNER WITHOUT THE EXPRESS
 WRITTEN CONSENT OF SAMTEC, INC.

MATERIAL: DO NOT SCALE DRAWING SHEET SCALE: 2:1
 INSULATORS: LCP, COLOR: BLACK
 SIGNAL TERMINAL: BRASS
 POWER TERMINAL: COPPER ALLOY

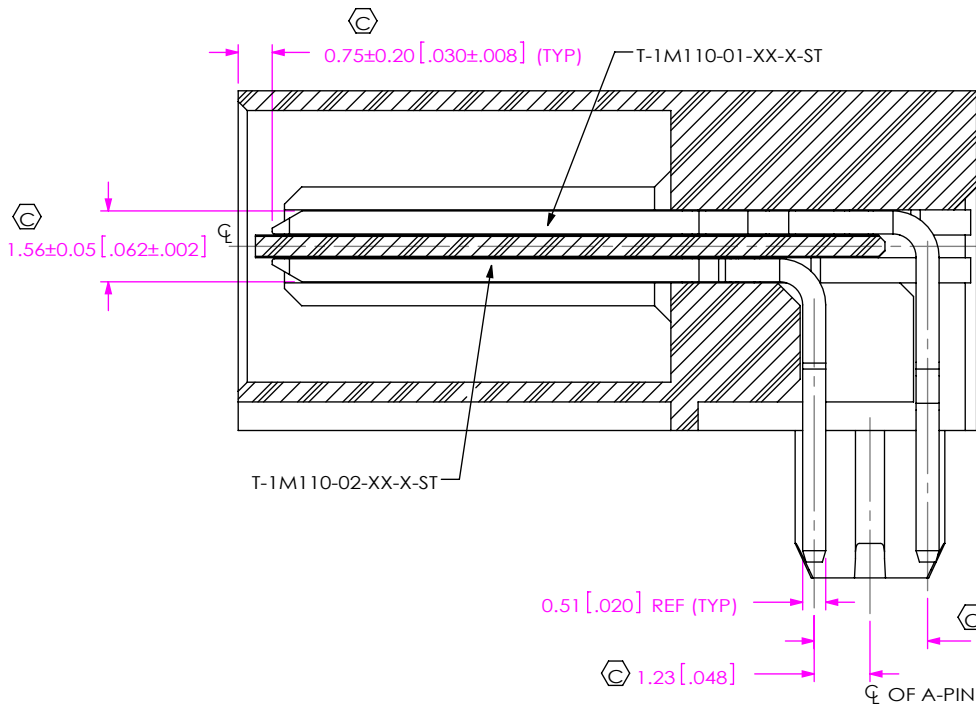


520 PARK EAST BLVD. NEW ALBANY, IN 47150
 PHONE: 812-944-6733 FAX: 812-948-5047
 e-Mail: info@SAMTEC.com code 55322

DESCRIPTION:
 LPHT-RA TERMINAL ASSEMBLY
 DWG. NO.
 LPHT-XX-XX-X-RTX-XX
 BY: ROY LUO 11/28/2011 SHEET 1 OF 8



SECTION "C"-"C"
SCALE 6:1



SECTION "D"-"D"
SCALE 6:1

F:\dvwg\misc\mktg\LPHT-XX-XX-X-RTX-XX-MKT.SLDDRW

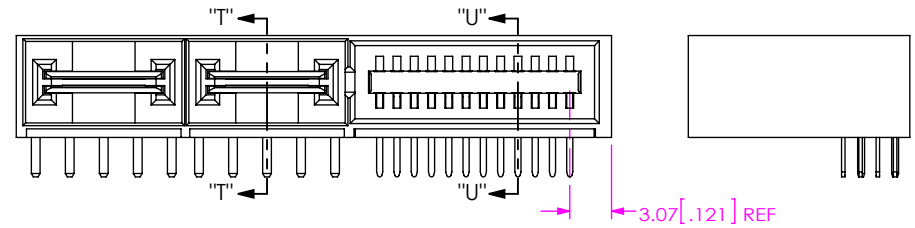
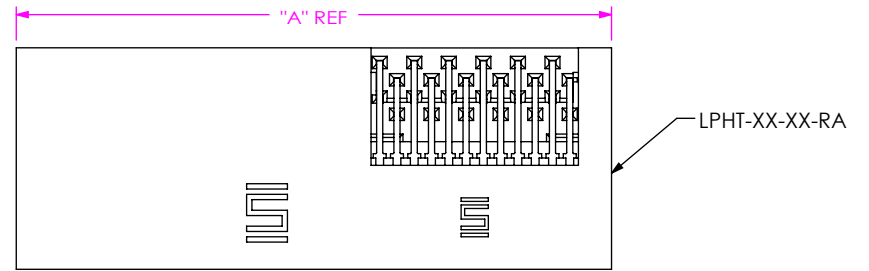
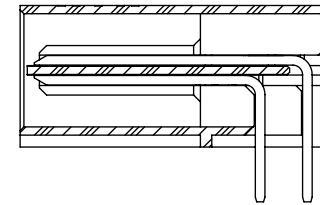
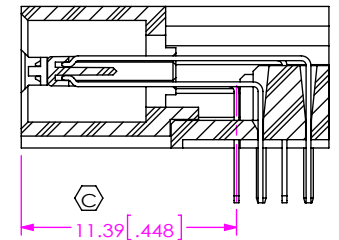


FIG 2
LPHT-04-24-X-RTX SHOWN
(DIFFERENT AS SHOWN, OTHERWISE SAME AS FIG 1)



SECTION "T"-"T"
(DIFFERENT AS SHOWN,
OTHERWISE SAME AS SECTION "D"-"D")



SECTION "U"-"U"
(DIFFERENT AS SHOWN,
OTHERWISE SAME AS SECTION "C"-"C")

PROPRIETARY NOTE

THIS DOCUMENT CONTAINS CONFIDENTIAL AND PROPRIETARY INFORMATION AND ALL DESIGN, MANUFACTURING, REPRODUCTION, USE, PATENT RIGHTS AND SALES RIGHTS ARE EXPRESSLY RESERVED BY SAMTEC, INC. THIS DOCUMENT SHALL NOT BE DISCLOSED, IN WHOLE OR PART, TO ANY UNAUTHORIZED PERSON OR ENTITY NOR REPRODUCED, TRANSFERRED OR INCORPORATED IN ANY OTHER PROJECT IN ANY MANNER WITHOUT THE EXPRESS WRITTEN CONSENT OF SAMTEC, INC.

DO NOT SCALE DRAWING

SHEET SCALE: 1.5:1

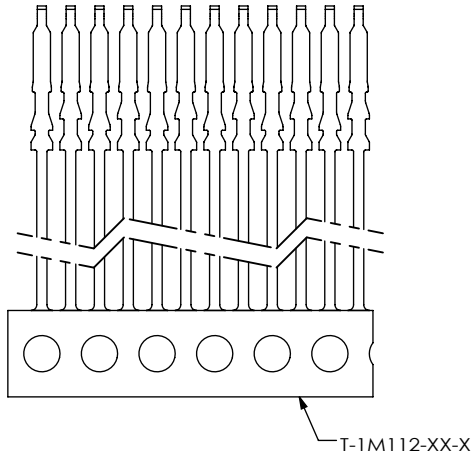


520 PARK EAST BLVD, NEW ALBANY, IN 47150
PHONE: 812-944-6733 FAX: 812-948-5047
e-Mail info@SAMTEC.com code 55322

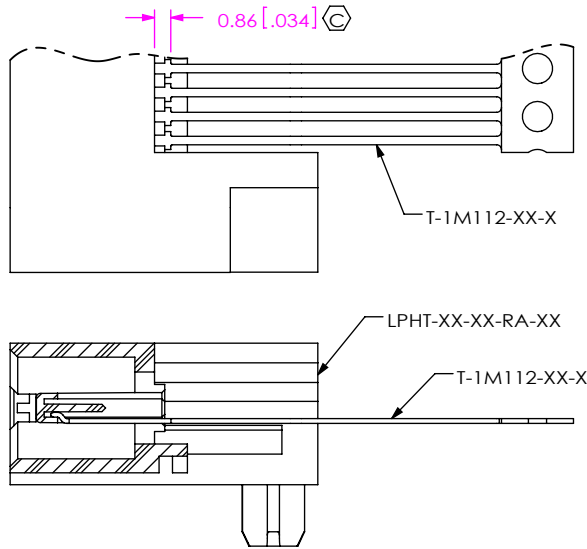
DESCRIPTION: LPHT-RA TERMINAL ASSEMBLY

DWG. NO. LPHT-XX-XX-X-RTX-XX

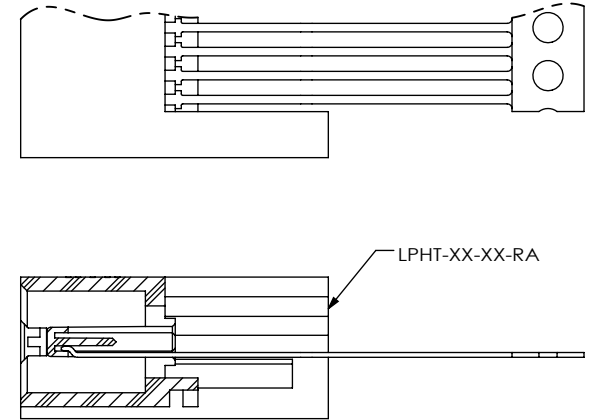
BY: ROY LUO 11/28/2011 SHEET 2 OF 8



IN-PROCESS 1
REMOVE TIE BARS FOR T-1M112-XX-X



GP OPTION



NO GP OPTION
(DIFFERENT AS SHOWN, OTHERWISE SAME AS GP OPTION)

IN-PROCESS 2
FILL SIGNAL BOTTOM ROW

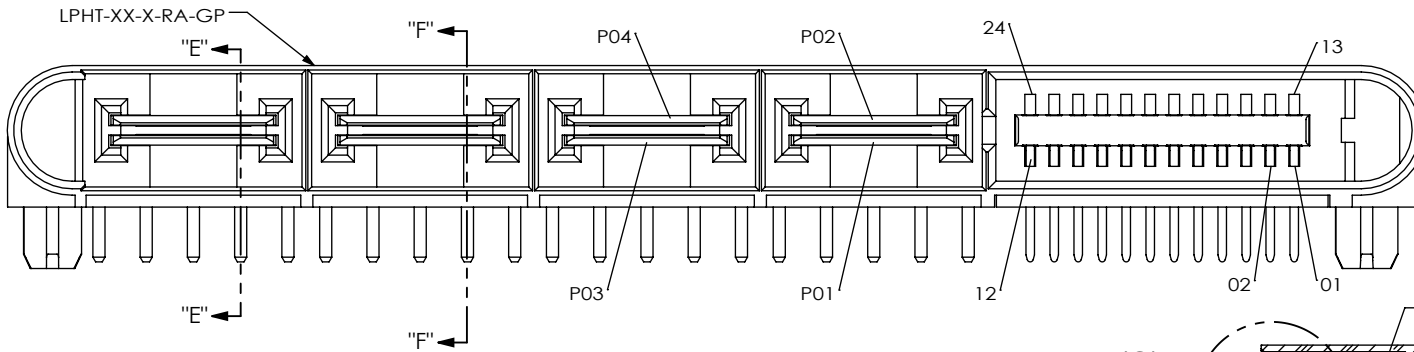
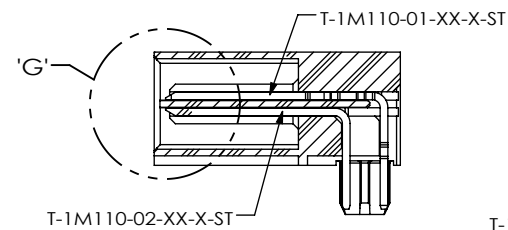
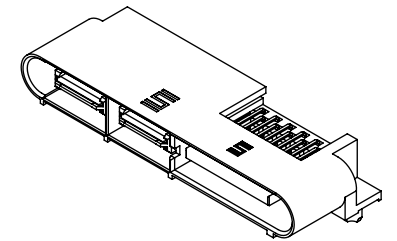
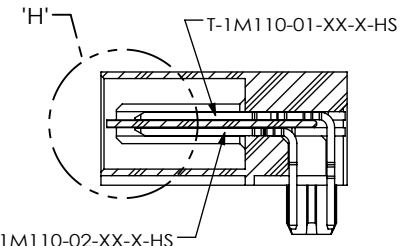


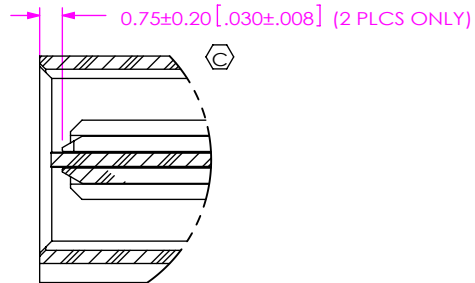
FIG 3
LPHT-08-24-X-RTX-GP-HS SHOWN
(DIFFERENT AS SHOWN, OTHERWISE SAME AS FIG 1)
(NOT TOOLED)



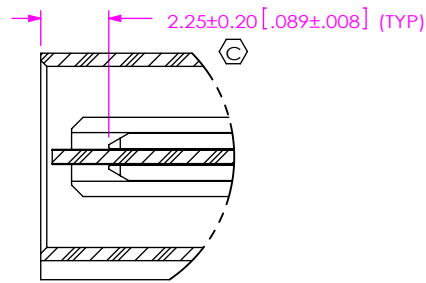
SECTION "E"-"E"
SCALE 2 : 1



SECTION "F"-"F"
SCALE 2 : 1



DETAIL 'G'
SCALE 4 : 1



DETAIL 'H'
SCALE 4 : 1

PROPRIETARY NOTE
THIS DOCUMENT CONTAINS CONFIDENTIAL AND PROPRIETARY INFORMATION AND ALL DESIGN, MANUFACTURING, REPRODUCTION, USE, PATENT RIGHTS AND SALES RIGHTS ARE EXPRESSLY RESERVED BY SAMTEC, INC. THIS DOCUMENT SHALL NOT BE DISCLOSED, IN WHOLE OR PART, TO ANY UNAUTHORIZED PERSON OR ENTITY NOR REPRODUCED, TRANSFERRED OR INCORPORATED IN ANY OTHER PRODUCT IN ANY MANNER WITHOUT THE EXPRESS WRITTEN CONSENT OF SAMTEC, INC.

DO NOT SCALE DRAWING

SHEET SCALE: 3:1



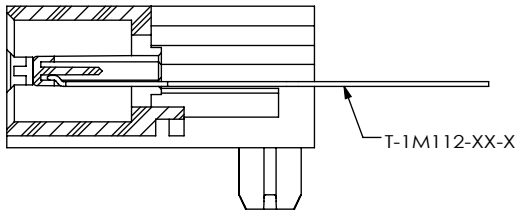
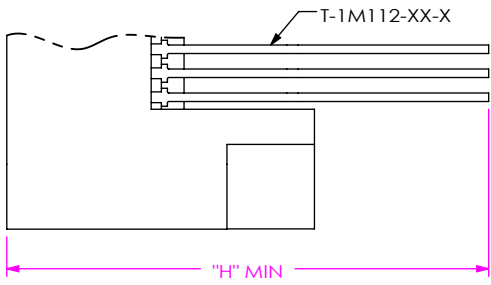
520 PARK EAST BLVD, NEW ALBANY, IN 47150
PHONE: 812-944-6733 FAX: 812-948-5047
e-Mail info@SAMTEC.com code 55322

DESCRIPTION: LPHT-RA TERMINAL ASSEMBLY

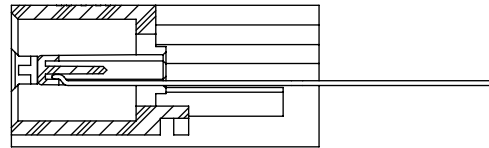
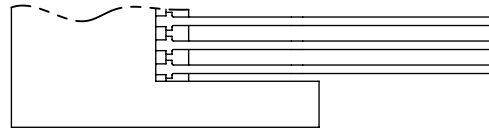
DWG. NO. LPHT-XX-XX-X-RTX-XX

BY: ROY LUO 11/28/2011 SHEET 3 OF 8

REVISION D



GP OPTION

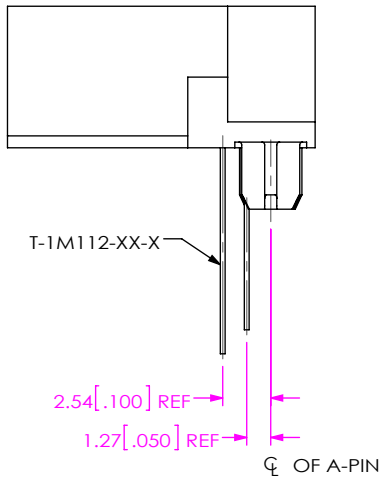


NO GP OPTION
(DIFFERENT AS SHOWN, OTHERWISE SAME AS GP OPTION)

TABLE 5

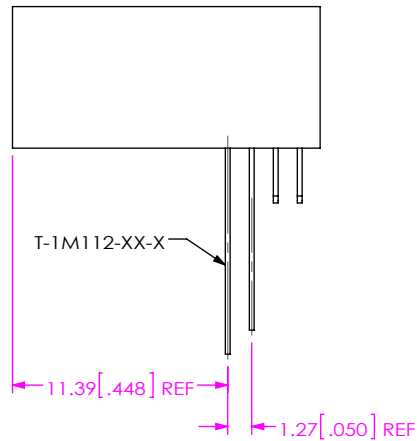
TAIL	"H"
-RT1	19.93 [.785]
-RT2	20.63 [.812]

IN-PROCESS 3
CUT OFF CARRIER

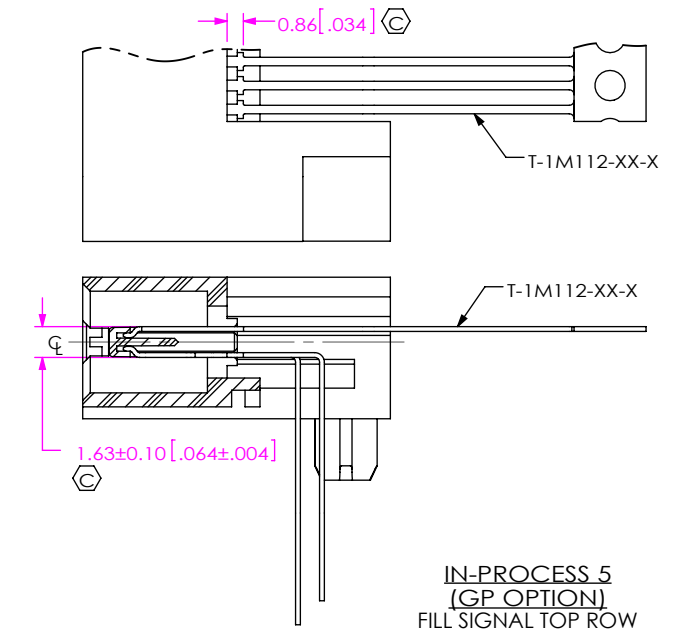


GP OPTION

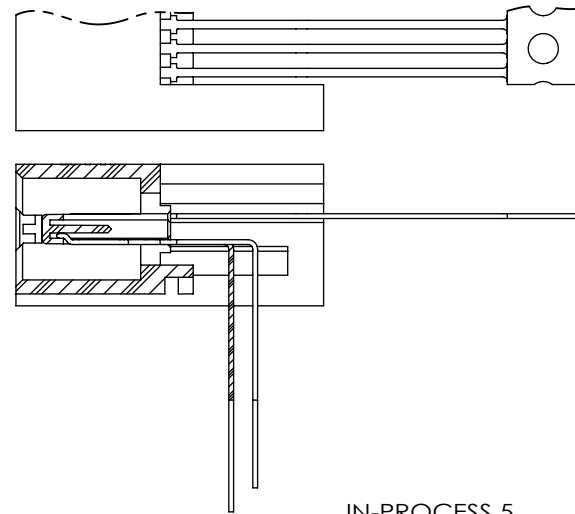
IN-PROCESS 4
FORM SIGNAL BOTTOM ROW



NO GP OPTION
(DIFFERENT AS SHOWN, OTHERWISE SAME AS GP OPTION)

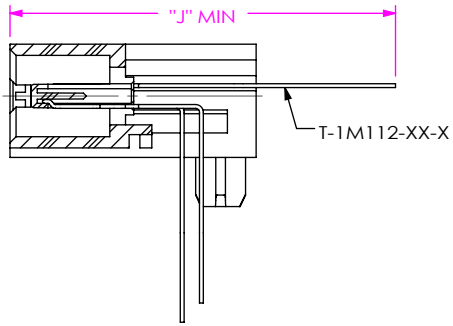


IN-PROCESS 5
(GP OPTION)
FILL SIGNAL TOP ROW

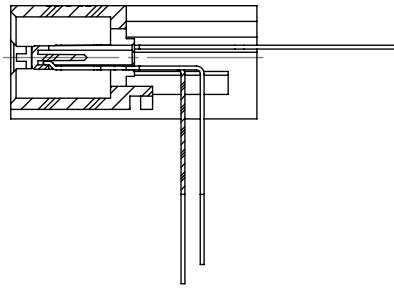


IN-PROCESS 5
(NO GP OPTION)
(DIFFERENT AS SHOWN, OTHERWISE SAME AS GP OPTION)
FILL SIGNAL TOP ROW

<p>PROPRIETARY NOTE</p> <p>THIS DOCUMENT CONTAINS CONFIDENTIAL AND PROPRIETARY INFORMATION AND ALL DESIGN, MANUFACTURING, REPRODUCTION, USE, PATENT RIGHTS AND SALES RIGHTS ARE EXPRESSLY RESERVED BY SAMTEC, INC. THIS DOCUMENT SHALL NOT BE DISCLOSED, IN WHOLE OR PART, TO ANY UNAUTHORIZED PERSON OR ENTITY NOR REPRODUCED, TRANSFERRED OR INCORPORATED IN ANY OTHER PROJECT IN ANY MANNER WITHOUT THE EXPRESS WRITTEN CONSENT OF SAMTEC, INC.</p>		
	<p>520 PARK EAST BLVD, NEW ALBANY, IN 47150 PHONE: 812-944-6733 FAX: 812-948-5047 e-Mail info@SAMTEC.com code 55322</p>	
DO NOT SCALE DRAWING	DESCRIPTION: LPHT-RA TERMINAL ASSEMBLY	
SHEET SCALE: 3:1	DWG. NO. LPHT-XX-XX-X-RTX-XX	
	BY: ROY LUO 11/28/2011	SHEET 4 OF 8



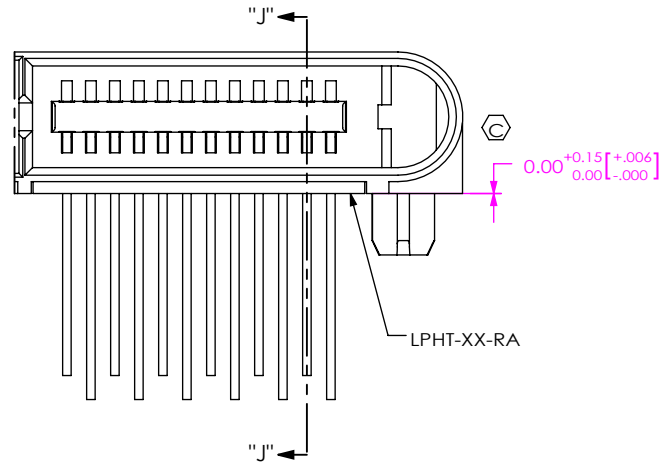
GP OPTION



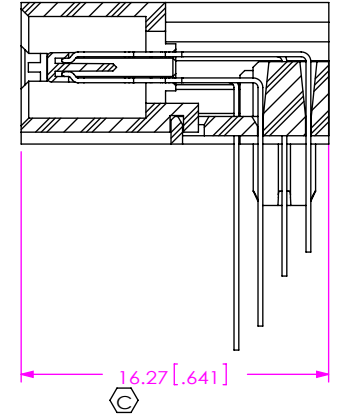
NO GP OPTION
(DIFFERENT AS SHOWN, OTHERWISE SAME AS GP OPTION)

IN-PROCESS 6
CUT OFF CARRIER

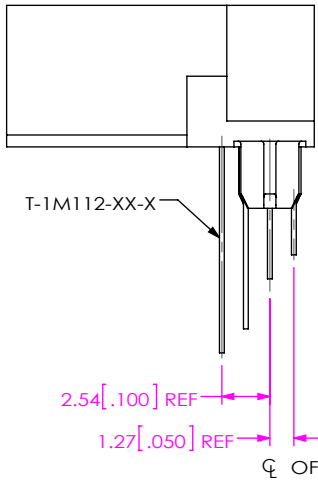
TABLE 6	
TAIL	"J"
-RT1	23.85 [.939]
-RT2	24.55 [.967]



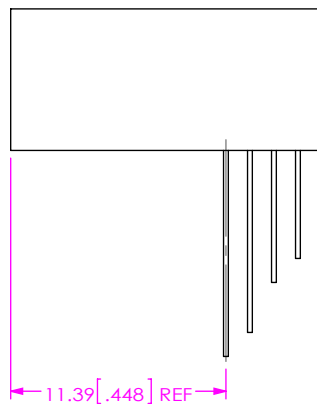
IN-PROCESS 8
(GP OPTION)
FILL LPHT-XX-RA



SECTION "J"-"J"
SCALE 2.5 : 1

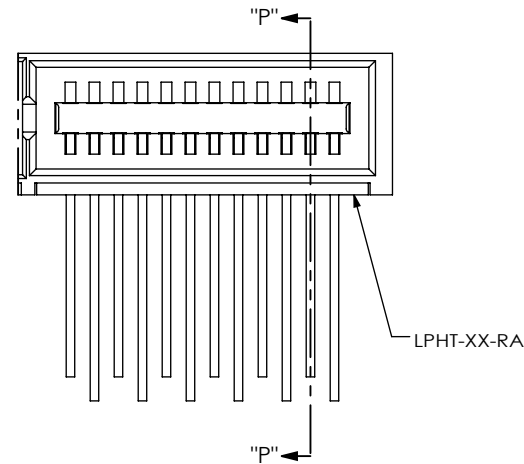


GP OPTION

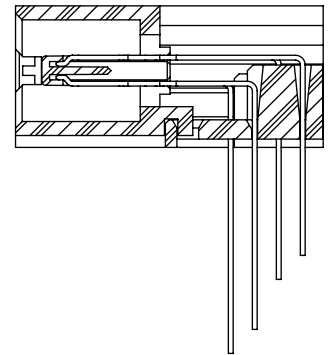


NO GP OPTION
(DIFFERENT AS SHOWN, OTHERWISE SAME AS GP OPTION)

IN-PROCESS 7
FORM SIGNAL TOP ROW



IN-PROCESS 8
(NO GP OPTION)
(DIFFERENT AS SHOWN, OTHERWISE SAME AS GP OPTION)
FILL LPHT-XX-RA



SECTION "P"-"P"
SCALE 2.5 : 1

PROPRIETARY NOTE
THIS DOCUMENT CONTAINS CONFIDENTIAL AND PROPRIETARY INFORMATION AND ALL DESIGN, MANUFACTURING, REPRODUCTION, USE, PATENT RIGHTS AND SALES RIGHTS ARE EXPRESSLY RESERVED BY SAMTEC, INC. THIS DOCUMENT SHALL NOT BE DISCLOSED, IN WHOLE OR PART, TO ANY UNAUTHORIZED PERSON OR ENTITY NOR REPRODUCED, TRANSFERRED OR INCORPORATED IN ANY OTHER PROJECT IN ANY MANNER WITHOUT THE EXPRESS WRITTEN CONSENT OF SAMTEC, INC.

DO NOT SCALE DRAWING

SHEET SCALE: 3:1



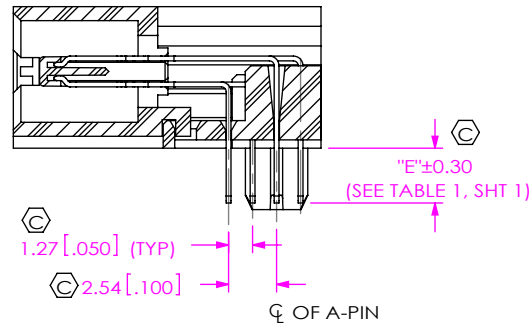
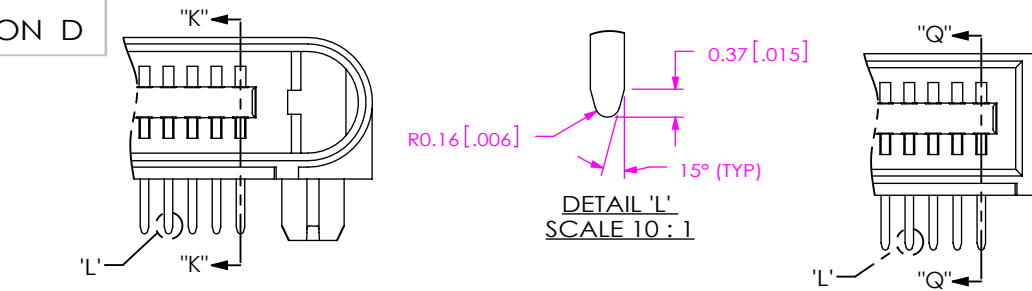
520 PARK EAST BLVD, NEW ALBANY, IN 47150
PHONE: 812-944-6733 FAX: 812-948-5047
e-Mail info@SAMTEC.com code 55322

DESCRIPTION:
LPHT-RA TERMINAL ASSEMBLY

DWG. NO.
LPHT-XX-XX-X-RTX-XX

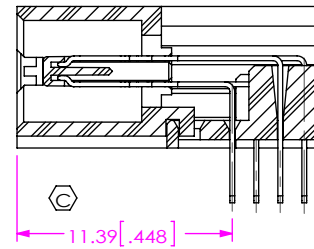
BY: ROY LUO 11/28/2011 SHEET 5 OF 8

REVISION D



SECTION "K"-"K"
GP OPTION

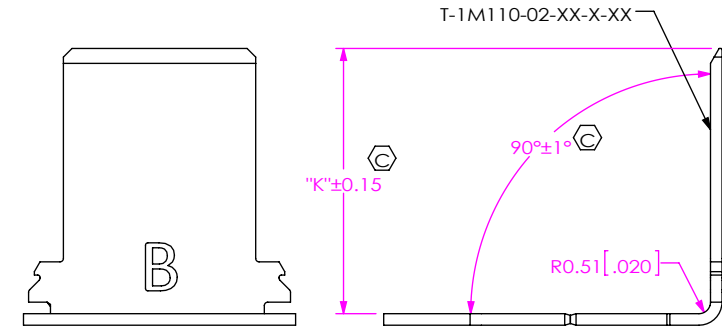
IN-PROCESS 9
SHEAR TAIL & COIN PIN



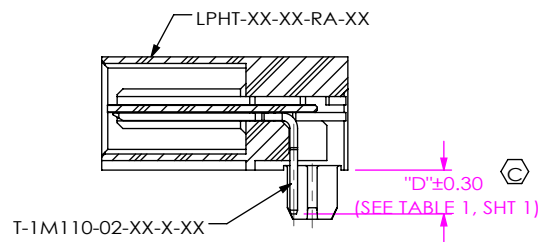
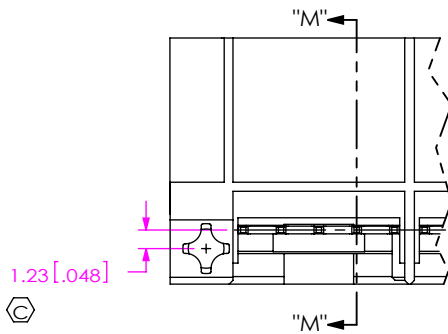
SECTION "Q"-"Q"
NO GP OPTION
(DIFFERENT AS SHOWN, OTHERWISE SAME AS GP OPTION)

TABLE 7		
OPTION	"K"	"L"
N/A	11.70 [0.461]	14.20 [0.559]
*-HS	10.20 [0.402]	12.70 [0.500]

(* = NOT TOOLED)



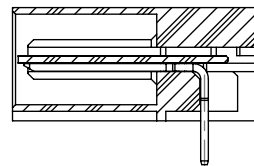
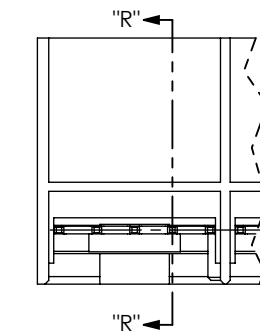
IN-PROCESS 10
(FORM T-1M110-02-XX-X-XX)



SECTION "M"-"M"
SCALE 2 : 1

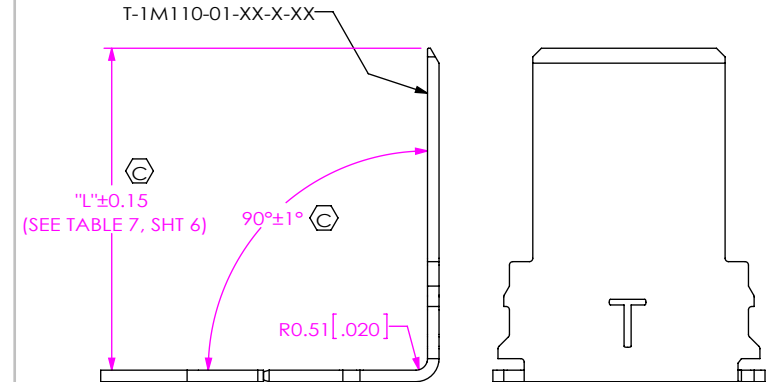
GP OPTION

IN-PROCESS 11
(FILL POWER BOTTOM ROW)



SECTION "R"-"R"
SCALE 2 : 1

NO GP OPTION
(DIFFERENT AS SHOWN, OTHERWISE SAME AS GP OPTION)



IN-PROCESS 12
(FORM T-1M110-01-XX-X-XX)

PROPRIETARY NOTE
THIS DOCUMENT CONTAINS CONFIDENTIAL AND PROPRIETARY INFORMATION AND ALL DESIGN, MANUFACTURING, REPRODUCTION, USE, PATENT RIGHTS AND SALES RIGHTS ARE EXPRESSLY RESERVED BY SAMTEC, INC. THIS DOCUMENT SHALL NOT BE DISCLOSED, IN WHOLE OR PART, TO ANY UNAUTHORIZED PERSON OR ENTITY NOR REPRODUCED, TRANSFERRED OR INCORPORATED IN ANY OTHER PROJECT IN ANY MANNER WITHOUT THE EXPRESS WRITTEN CONSENT OF SAMTEC, INC.

samtec

520 PARK EAST BLVD, NEW ALBANY, IN 47150
PHONE: 812-944-6733 FAX: 812-948-5047
e-Mail info@SAMTEC.com code 55322

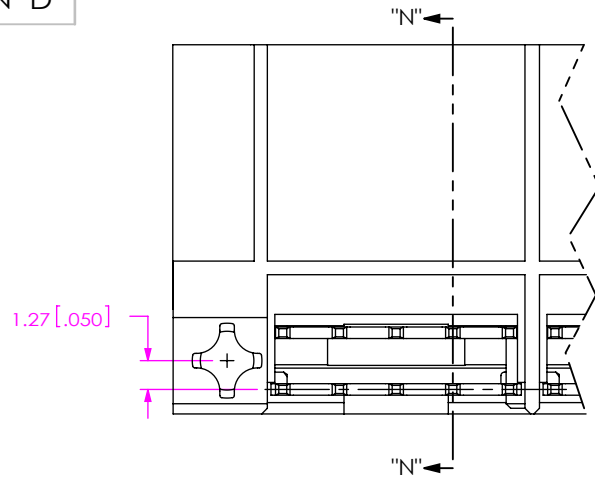
DO NOT SCALE DRAWING

SHEET SCALE: 1:1

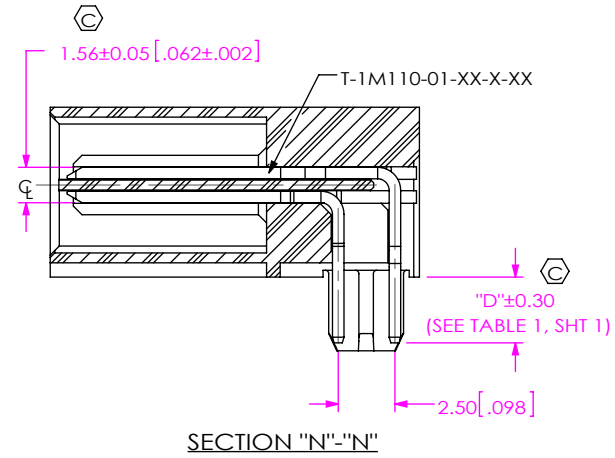
DESCRIPTION:
LPHT-RA TERMINAL ASSEMBLY

DWG. NO.
LPHT-XX-XX-X-RTX-XX

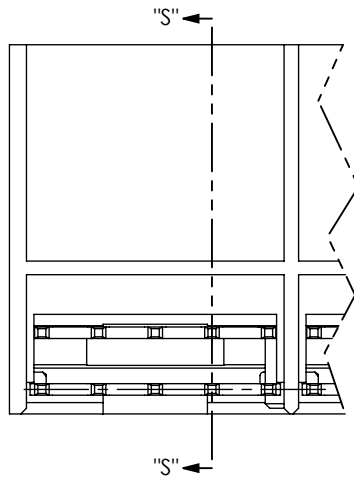
BY: ROY LUO 11/28/2011 SHEET 6 OF 8



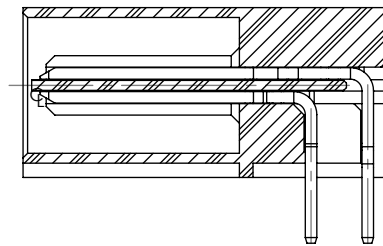
IN-PROCESS 13
(GP OPTION)
(FILL POWER TOP ROW)



SECTION "N"-"N"



IN-PROCESS 13
(NO GP OPTION)
(FILL POWER TOP ROW)



SECTION "S"-"S"

F:\dwg\misc\mktg\LPHT-XX-XX-X-RTX-XX-MKT.SLDDRW

PROPRIETARY NOTE
THIS DOCUMENT CONTAINS CONFIDENTIAL AND PROPRIETARY INFORMATION AND ALL DESIGN, MANUFACTURING, REPRODUCTION, USE, PATENT RIGHTS AND SALES RIGHTS ARE EXPRESSLY RESERVED BY SAMTEC, INC. THIS DOCUMENT SHALL NOT BE DISCLOSED, IN WHOLE OR PART, TO ANY UNAUTHORIZED PERSON OR ENTITY NOR REPRODUCED, TRANSFERRED OR INCORPORATED IN ANY OTHER PROJECT IN ANY MANNER WITHOUT THE EXPRESS WRITTEN CONSENT OF SAMTEC, INC.

DO NOT SCALE DRAWING

SHEET SCALE: 3:1



520 PARK EAST BLVD, NEW ALBANY, IN 47150
PHONE: 812-944-6733 FAX: 812-948-5047
e-Mail info@SAMTEC.com code 55322

DESCRIPTION:
LPHT-RA TERMINAL ASSEMBLY

DWG. NO.
LPHT-XX-XX-X-RTX-XX

BY: ROY LUO 11/28/2011 SHEET 7 OF 8

TABLE 2 SIGNAL/POWER COMBO -A-GP

SIGNAL POS	02 POWER POS			04 POWER POS			06 POWER POS			08 POWER POS		
	"A"	"B"	"C"	"A"	"B"	"C"	"A"	"B"	"C"	"A"	"B"	"C"
* 12	31.43 [1.237]	24.09 [0.948]	25.92 [1.020]	43.43 [1.710]	36.09 [1.421]	37.92 [1.493]	55.43 [2.182]	48.09 [1.893]	49.92 [1.965]	67.43 [2.655]	60.09 [2.366]	61.92 [2.438]
16	33.97 [1.337]	26.63 [1.048]	28.46 [1.120]	45.97 [1.810]	38.63 [1.521]	40.46 [1.593]	57.97 [2.282]	50.63 [1.993]	52.46 [2.065]	69.97 [2.755]	62.63 [2.466]	64.46 [2.538]
20	36.51 [1.437]	29.17 [1.148]	31.00 [1.220]	48.51 [1.910]	41.17 [1.621]	43.00 [1.693]	60.51 [2.382]	53.17 [2.093]	55.00 [2.165]	72.51 [2.855]	65.17 [2.566]	67.00 [2.638]
24	39.05 [1.537]	31.71 [1.248]	33.54 [1.320]	51.05 [2.010]	43.71 [1.721]	45.54 [1.793]	63.05 [2.482]	55.71 [2.193]	57.54 [2.265]	75.05 [2.955]	67.71 [2.666]	69.54 [2.738]
28	41.59 [1.637]	34.25 [1.348]	36.08 [1.420]	53.59 [2.110]	46.25 [1.821]	48.08 [1.893]	65.59 [2.582]	58.25 [2.293]	60.08 [2.365]	77.59 [3.055]	70.25 [2.766]	72.08 [2.838]
32	44.13 [1.737]	36.79 [1.448]	38.62 [1.520]	56.13 [2.210]	48.79 [1.921]	50.62 [1.993]	68.13 [2.682]	60.79 [2.393]	62.62 [2.465]	80.13 [3.155]	72.79 [2.866]	74.62 [2.938]
* 36	46.67 [1.837]	39.33 [1.548]	41.16 [1.620]	58.67 [2.310]	51.33 [2.021]	53.16 [2.093]	70.67 [2.782]	63.33 [2.493]	65.16 [2.565]	82.67 [3.255]	75.33 [2.966]	77.16 [3.038]
* 40	49.21 [1.937]	41.87 [1.648]	43.70 [1.720]	61.21 [2.410]	53.87 [2.121]	55.70 [2.193]	73.21 [2.882]	65.87 [2.593]	67.70 [2.665]	85.21 [3.355]	77.87 [3.066]	79.70 [3.138]

(* = NOT TOOLED)

TABLE 2 SIGNAL/POWER COMBO -A-GP CONTINUED

SIGNAL POS	10 POWER POS			*12 POWER POS			*14 POWER		
	"A"	"B"	"C"	"A"	"B"	"C"	"A"	"B"	"C"
* 12	79.43 [3.127]	72.09 [2.838]	73.92 [2.910]	91.43 [3.600]	84.09 [3.311]	85.92 [3.383]	103.43 [4.072]	96.09 [3.783]	97.92 [3.855]
16	81.97 [3.227]	74.63 [2.938]	76.46 [3.010]	93.97 [3.700]	86.63 [3.411]	88.46 [3.483]	105.97 [4.172]	98.63 [3.883]	100.46 [3.955]
20	84.51 [3.327]	77.17 [3.038]	79.00 [3.110]	96.51 [3.800]	89.17 [3.511]	91.00 [3.583]	108.51 [4.272]	101.17 [3.983]	103.00 [4.055]
24	87.05 [3.427]	79.71 [3.138]	81.54 [3.210]	99.05 [3.900]	91.71 [3.611]	93.54 [3.683]	111.05 [4.372]	103.71 [4.083]	105.54 [4.155]
28	89.59 [3.527]	82.25 [3.238]	84.08 [3.310]	101.59 [4.000]	94.25 [3.711]	96.08 [3.783]	113.59 [4.472]	106.25 [4.183]	108.08 [4.255]
32	92.13 [3.627]	84.79 [3.338]	86.62 [3.410]	104.13 [4.100]	96.79 [3.811]	98.62 [3.883]	116.13 [4.572]	108.79 [4.283]	110.62 [4.355]
* 36	94.67 [3.727]	87.33 [3.438]	89.16 [3.510]	106.67 [4.200]	99.33 [3.911]	101.16 [3.983]	118.67 [4.672]	111.33 [4.383]	113.16 [4.455]
* 40	97.21 [3.827]	89.87 [3.538]	91.70 [3.610]	109.21 [4.300]	101.87 [4.011]	103.70 [4.083]	121.21 [4.772]	113.87 [4.483]	115.70 [4.555]

(* = NOT TOOLED)

TABLE 3 SIGNAL/POWER COMBO (NO GP OPTIONS)

SIGNAL POS	02 POWER	04 POWER	06 POWER	08 POWER	10 POWER	*12 POWER	*14 POWER
	"A"	"A"	"A"	"A"	"A"	"A"	"A"
* 12	23.96 [0.943]	35.96 [1.416]	47.96 [1.888]	59.96 [2.361]	71.96 [2.833]	83.96 [3.306]	95.96 [3.778]
16	26.50 [1.043]	38.50 [1.516]	50.50 [1.988]	62.50 [2.461]	74.50 [2.933]	86.50 [3.406]	98.50 [3.878]
20	29.04 [1.143]	41.04 [1.616]	53.04 [2.088]	65.04 [2.561]	77.04 [3.033]	89.04 [3.506]	101.04 [3.978]
24	31.58 [1.243]	43.58 [1.716]	55.58 [2.188]	67.58 [2.661]	79.58 [3.133]	91.58 [3.606]	103.58 [4.078]
28	34.12 [1.343]	46.12 [1.816]	58.12 [2.288]	70.12 [2.761]	82.12 [3.233]	94.12 [3.706]	106.12 [4.178]
32	36.66 [1.443]	48.66 [1.916]	60.66 [2.388]	72.66 [2.861]	84.66 [3.333]	96.66 [3.806]	108.66 [4.278]
* 36	39.20 [1.543]	51.20 [2.016]	63.20 [2.488]	75.20 [2.961]	87.20 [3.433]	99.20 [3.906]	111.20 [4.378]
* 40	41.74 [1.643]	53.74 [2.116]	65.74 [2.588]	77.74 [3.061]	89.74 [3.533]	101.74 [4.006]	113.74 [4.478]

(* = NOT TOOLED)

TABLE 4

SIGNAL POS	"F"	"G"
* 12	6.35 [0.250]	6.35 [0.250]
16	8.89 [0.350]	8.89 [0.350]
20	11.43 [0.450]	11.43 [0.450]
24	13.97 [0.550]	13.97 [0.550]
28	16.51 [0.650]	16.51 [0.650]
32	19.05 [0.750]	19.05 [0.750]
* 36	21.59 [0.850]	21.59 [0.850]
* 40	24.13 [0.950]	24.13 [0.950]

(* = NOT TOOLED)

PROPRIETARY NOTE

THIS DOCUMENT CONTAINS CONFIDENTIAL AND PROPRIETARY INFORMATION AND ALL DESIGN, MANUFACTURING, REPRODUCTION, USE, PATENT RIGHTS AND SALES RIGHTS ARE EXPRESSLY RESERVED BY SAMTEC, INC. THIS DOCUMENT SHALL NOT BE DISCLOSED, IN WHOLE OR PART, TO ANY UNAUTHORIZED PERSON OR ENTITY NOR REPRODUCED, TRANSFERRED OR INCORPORATED IN ANY OTHER PROJECT IN ANY MANNER WITHOUT THE EXPRESS WRITTEN CONSENT OF SAMTEC, INC.

DO NOT SCALE DRAWING

SHEET SCALE: 1:1



520 PARK EAST BLVD, NEW ALBANY, IN 47150
PHONE: 812-944-6733 FAX: 812-948-5047
e-Mail info@SAMTEC.com code 53322

DESCRIPTION: LPHT-RA TERMINAL ASSEMBLY

DWG. NO. LPHT-XX-XX-X-RTX-XX

BY: ROY LUO 11/28/2011 SHEET 8 OF 8