



Chipsmall Limited consists of a professional team with an average of over 10 year of expertise in the distribution of electronic components. Based in Hongkong, we have already established firm and mutual-benefit business relationships with customers from,Europe,America and south Asia,supplying obsolete and hard-to-find components to meet their specific needs.

With the principle of “Quality Parts,Customers Priority,Honest Operation,and Considerate Service”,our business mainly focus on the distribution of electronic components. Line cards we deal with include Microchip,ALPS,ROHM,Xilinx,Pulse,ON,Everlight and Freescale. Main products comprise IC,Modules,Potentiometer,IC Socket,Relay,Connector.Our parts cover such applications as commercial,industrial, and automotives areas.

We are looking forward to setting up business relationship with you and hope to provide you with the best service and solution. Let us make a better world for our industry!



Contact us

Tel: +86-755-8981 8866 Fax: +86-755-8427 6832

Email & Skype: info@chipsmall.com Web: www.chipsmall.com

Address: A1208, Overseas Decoration Building, #122 Zhenhua RD., Futian, Shenzhen, China



LPX 80

ENCLOSURE

Installation Notes

LPX80 • Cover Enclosure Kit

LPX80 will fit all the LPX8X power supplies

AMERICAS

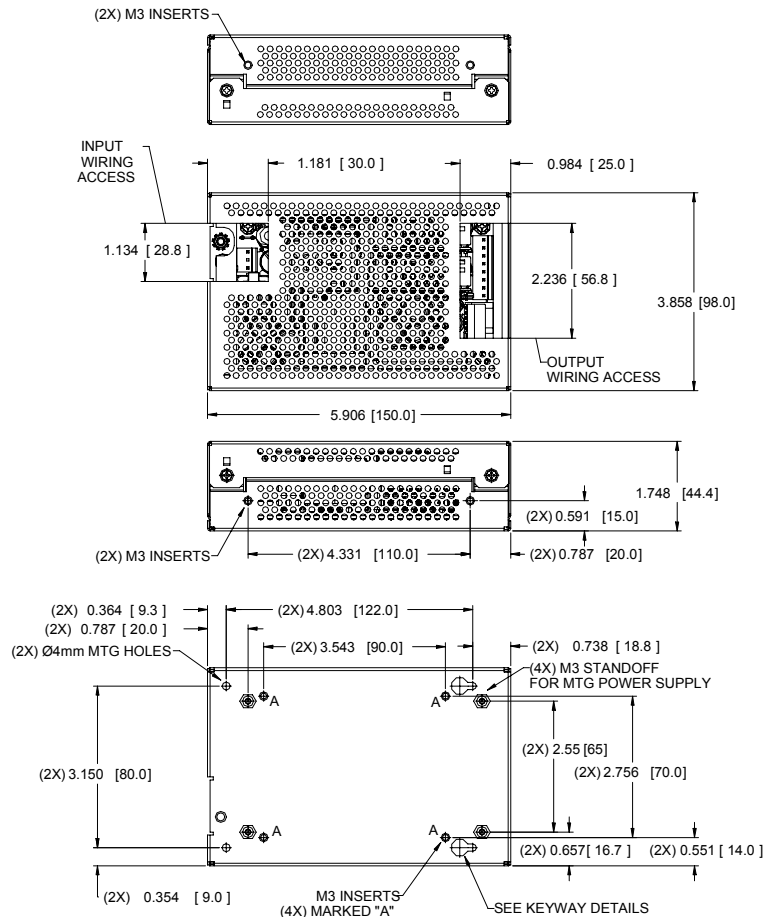
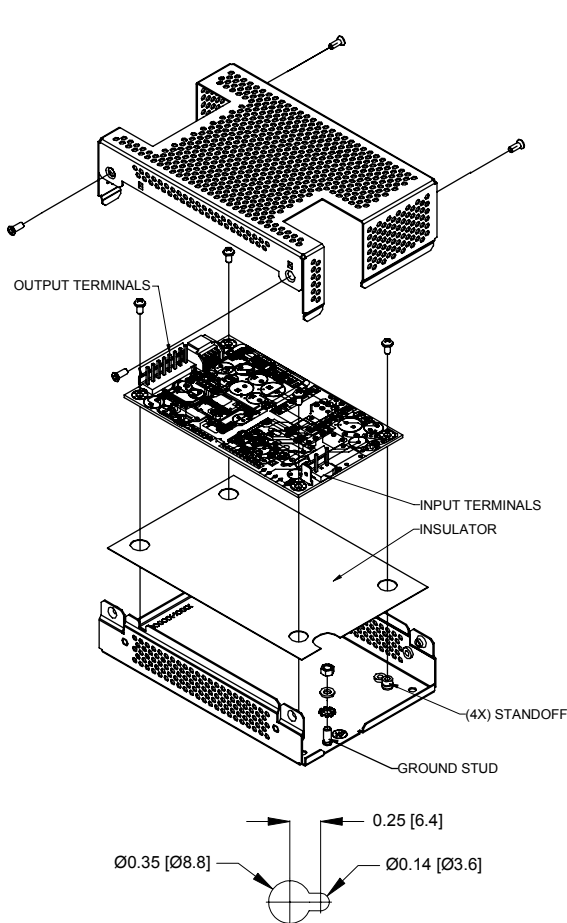
5810 Van Allen Way
Carlsbad, CA 92008
Telephone: 760-930-4600
Facsimile: 760-930-0698

EUROPE

Astec House, Waterfront Business Park
Merry Hill, Dudley
West Midlands, DY5 1LX, UK
Telephone: +44(0)1384-842211
Facsimile: +44(0)1384-843355

ASIA

Units 2111-2116, Level 21
Tower1, Metroplaza
223, Hing Fong Road
Kwai Fong, New Territories
Hong Kong
Telephone: 852-2437-9662
Facsimile: 852-2402-4426



MATERIALS

- 1 Base
- 1 Cover
- 4 M3 x 6mm pan head screws with spring washer
- 4 M3 x 6mm countersunk screws
- 1 M4 nut
- 1 M4 star washer
- 1 M4 spring washer
- 1 Plastic insulator sheet

NOTES

1. All dimensions are in inches (mm)
2. Overall dimensions:
5.9 (150) x 3.9 (98.0) x 1.75 (44.4)
3. Base plate has three sets of customer mountings:
a. Bottom mounting (4x) M3 inserts. Max. screw penetration 0.0787 (2mm)
b. Bottom mounting (2x) 4mm clear holes plus 2 keyways (see keyway detail)
c. Side mountings (4x) M3 inserts. Max. screw penetration 0.236 (6mm)
4. Ensure insulator is correctly fitted in base under PCB to maintain safety creepage and clearances.
5. Ensure base is firmly connected to supply earth via the earth stud marked Ⓧ.
6. When using this enclosure, ensure that relevant safety standards (e.g., EN60950) are complied with, in respect to creepage and clearance distances, and distances through insulation.