



Chipsmall Limited consists of a professional team with an average of over 10 year of expertise in the distribution of electronic components. Based in Hongkong, we have already established firm and mutual-benefit business relationships with customers from,Europe,America and south Asia,supplying obsolete and hard-to-find components to meet their specific needs.

With the principle of "Quality Parts,Customers Priority,Honest Operation,and Considerate Service",our business mainly focus on the distribution of electronic components. Line cards we deal with include Microchip,ALPS,ROHM,Xilinx,Pulse,ON,Everlight and Freescale. Main products comprise IC,Modules,Potentiometer,IC Socket,Relay,Connector.Our parts cover such applications as commercial,industrial, and automotives areas.

We are looking forward to setting up business relationship with you and hope to provide you with the best service and solution. Let us make a better world for our industry!



Contact us

Tel: +86-755-8981 8866 Fax: +86-755-8427 6832

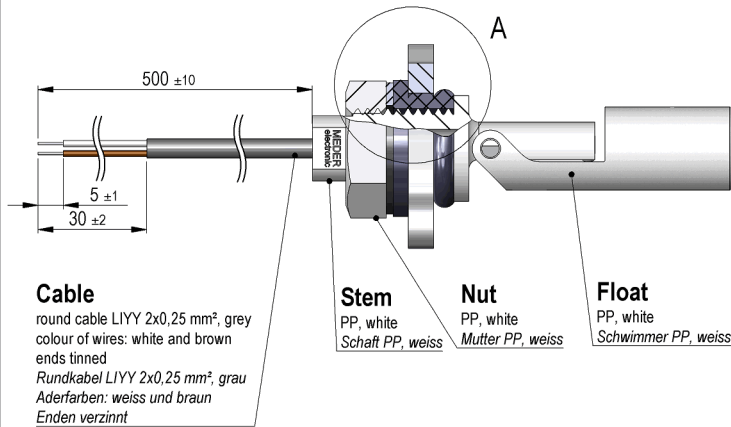
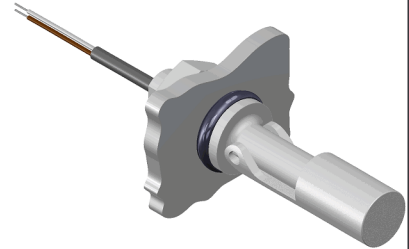
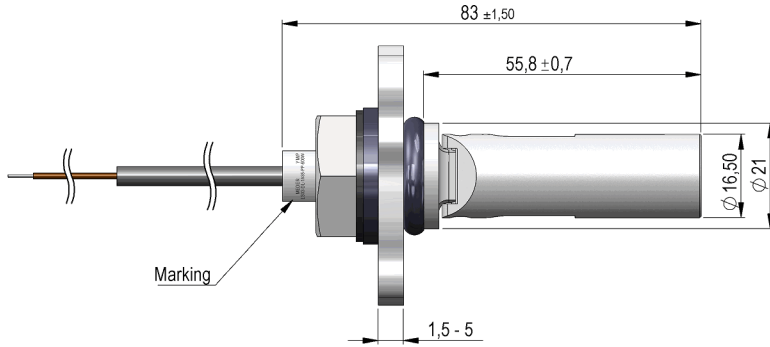
Email & Skype: info@chipsmall.com Web: www.chipsmall.com

Address: A1208, Overseas Decoration Building, #122 Zhenhua RD., Futian, Shenzhen, China



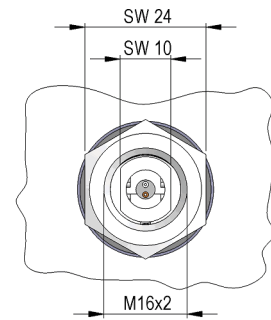
Dimensions mm[inch]
tolerances acc. to DIN ISO 2768-m
Toleranzen gem. DIN ISO 2768-m

Isometric
Scale 1:2
Maßstab 1:2

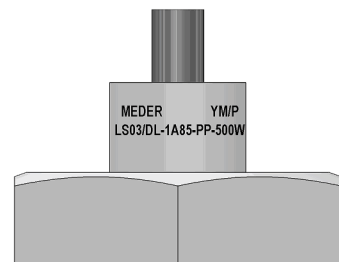


CLOSED
GESCHLOSSEN

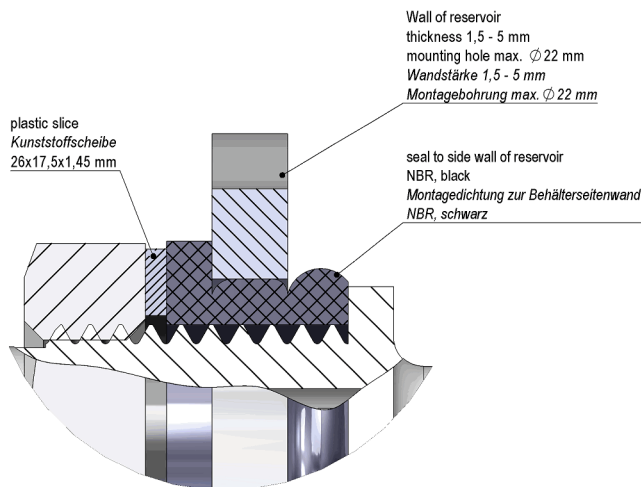
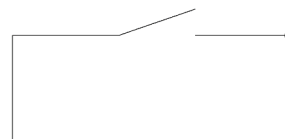
OPEN
OFFEN



Marking
according to EN60062/factory code
gem. EN60062/Fertigungsstätte



Schematic



DETAILA (2 : 1)

Modifications in the sense of technical progress are reserved

Designed at: 28.01.10 Designed by: WKOVACS
Last Change at: 12.09.17 Last Change by: WKOVACS

Approval at: 01.03.10 Approval by: HWEDELE
Approval at: 02.11.17 Approval by: DKUECHLER

Rev. No.: 03



Europe: +49 / 7731 8399 0

| Email: info@standexmeder.com

Item No.:

USA: +1 / 508 295 0771

| Email: salesusa@standexmeder.com

9534285054

Asia: +852 / 2955 1682

| Email: salesasia@standexmeder.com

Item:

LS03/DL-1A85-PP-500W

Special Product Data	Conditions	Min	Typ	Max	Unit
Contact rating	Any DC combination of V & A not to exceed their individual max.'s			100	W
Switching voltage	DC or Peak AC			250	V
Carry current	DC or Peak AC			2,5	A
Switching current	DC or Peak AC			1	A
Sensor-resistance	measured with 40% overdrive			280	mOhm
Housing material				PP	
Case colour				white	
Sealing compound				Polyurethan	

Environmental data	Conditions	Min	Typ	Max	Unit
Operating temperature	cable not moved	-30		80	°C
Operating temperature	cable moved	-5		80	°C
Storage temperature		-30		80	°C
Safety class	DIN EN 60529			IP68	

Cable specification	Conditions	Min	Typ	Max	Unit
Cable type				round cable	
Cable material				PVC	
Cross section				0,25 sq-mm	

General data	Conditions	Min	Typ	Max	Unit
Mounting advice				over 5m cable, a resistor is recommended.	

Modifications in the sense of technical progress are reserved

Designed at: 28.01.10 Designed by: WKOVACS

Approval at: 01.03.10 Approval by: HWEDELE

Last Change at: 12.09.17 Last Change by: WKOVACS

Approval at: 02.11.17 Approval by: DKUECHLER

Rev. No.: 03