



Chipsmall Limited consists of a professional team with an average of over 10 year of expertise in the distribution of electronic components. Based in Hongkong, we have already established firm and mutual-benefit business relationships with customers from,Europe,America and south Asia,supplying obsolete and hard-to-find components to meet their specific needs.

With the principle of “Quality Parts,Customers Priority,Honest Operation,and Considerate Service”,our business mainly focus on the distribution of electronic components. Line cards we deal with include Microchip,ALPS,ROHM,Xilinx,Pulse,ON,Everlight and Freescale. Main products comprise IC,Modules,Potentiometer,IC Socket,Relay,Connector.Our parts cover such applications as commercial,industrial, and automotives areas.

We are looking forward to setting up business relationship with you and hope to provide you with the best service and solution. Let us make a better world for our industry!



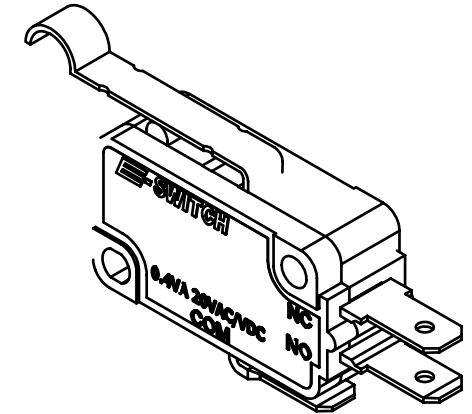
## Contact us

Tel: +86-755-8981 8866 Fax: +86-755-8427 6832

Email & Skype: [info@chipsmall.com](mailto:info@chipsmall.com) Web: [www.chipsmall.com](http://www.chipsmall.com)

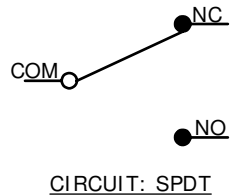
Address: A1208, Overseas Decoration Building, #122 Zhenhua RD., Futian, Shenzhen, China





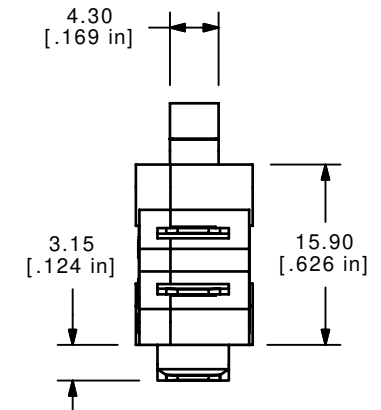
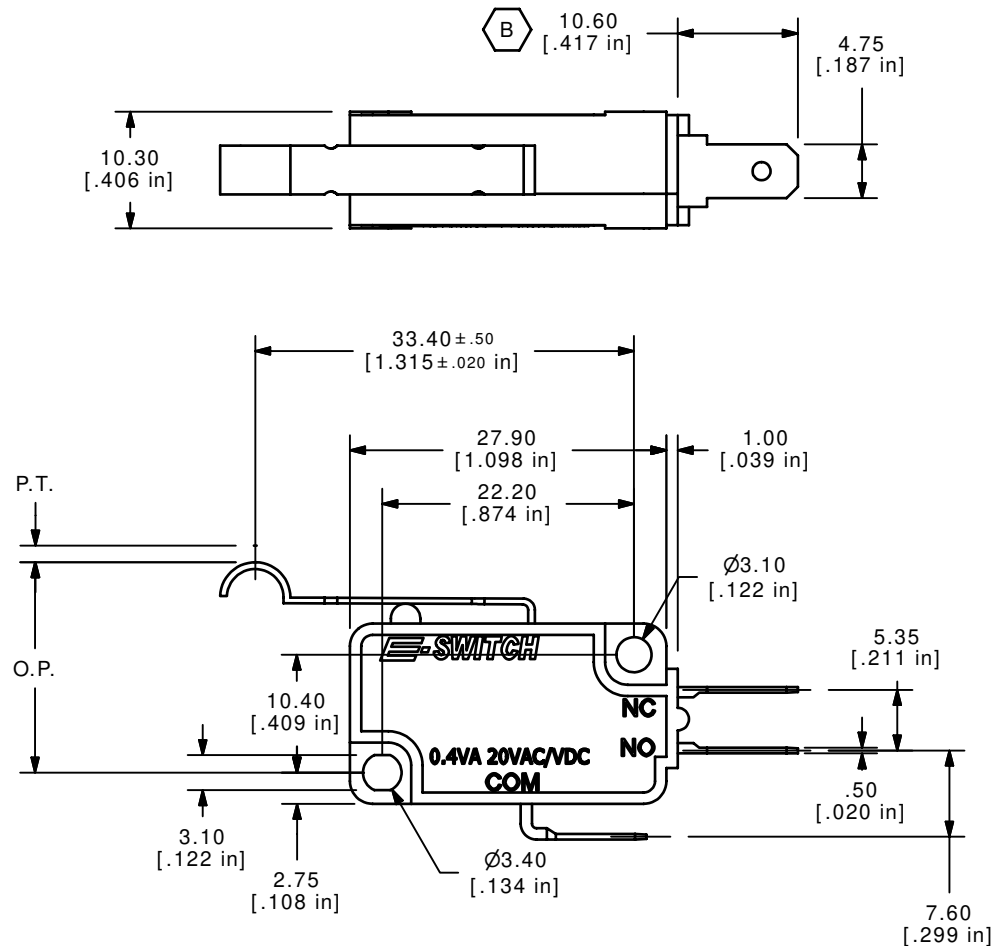
O.P. (MM)	P.T. (MM)
19.0 ± 1.5	5.2 MAX.

O.P. = OPERATING POINT  
P.T. = PRE-TRAVEL



NOTES:

1. ALL DIMENSIONS IN MM [INCH]  
2. GENERAL TOLERANCE: X.X=±0.4  
X.XX=±0.25  
3. RATING: 0.4VA @20VAC OR DC  
4. OPERATING FORCE: 050±20 GRAMS  
5. OPERATING TEMP: -25°C TO 85°C  
6. ELECTRICAL LIFE: 50,000 CYCLES MIN.  
7. MECHANICAL LIFE: 1,000,000 CYCLES TYP.  
8. INSULATION RESISTANCE: 100 MEGA-OHMS MIN.  
9. DIELECTRIC STRENGTH: 1500VAC 1 MINUTE (INITIAL VALUE)  
10. CONTACT RESISTANCE: 100 MILLI -OHMS MAX.  
11. ▲ DENOTES CRITICAL PARAMETER.  
12. 2002/95/EC (ROHS) COMPLIANT  
13. CONTACTS: 10 MICRO INCHES MINIMUM GOLD PLATING (P/N Q990000)



B	15822	EDIT FORCE NOTE	2/27/06	PH
A	15806	RELEASED FOR PRODUCTION	2/23/06	PH
REV	PCR NO	DESCRIPTION	DATE	BY

THE INFORMATION CONTAINED IN THIS DOCUMENT IS PROPRIETARY  
TO E-SWITCH AND IS NOT TO BE COPIED OR TRANSFERRED

**E-SWITCH®**

TITLE LS085R104F050C1A

SCALE 1.5:1

DATE 2/23/2006

DR	PH
----	----

DWG Q950034

REV  
B